



university of otago

annual report 2003



## UNIVERSITY OF OTAGO

Leith Street, Dunedin  
New Zealand  
Mail PO Box 56, Dunedin, New Zealand  
Tel 64 3 479 1100  
Fax 64 3 479 8692  
Email registrar@otago.ac.nz  
Web www.otago.ac.nz

## CHRISTCHURCH

Christchurch School of Medicine and Health Sciences  
2 Riccarton Avenue  
Christchurch, New Zealand  
Mail PO Box 4345, Christchurch, New Zealand  
Tel 64 3 364 0530  
Fax 64 3 364 0525  
Email csm-enquiries@otago.ac.nz

## WELLINGTON

Wellington School of Medicine and Health Sciences  
Mein Street, Newtown  
Wellington South, New Zealand  
Mail PO Box 7343, Wellington South, New Zealand  
Tel 64 4 385 5541  
Fax 64 4 389 5725  
Email deanddept@wnmeds.ac.nz

University of Otago Stadium Centre  
Westpac Stadium, Waterloo Quay, Wellington  
Mail PO Box 400, Wellington, New Zealand  
Tel 64 4 460 9800  
Fax 64 4 460 9801  
Email stadium@otago.ac.nz

## AUCKLAND

University of Otago Auckland Centre  
University of Otago House  
Levels 3 & 4, 385 Queen Street  
Auckland, New Zealand  
Mail PO Box 5543, Wellesley Street, Auckland, New Zealand  
Tel 64 9 373 9700  
Fax 64 9 373 9701  
Email auckland-centre@stonebow.otago.ac.nz

## MISSION

The University of Otago will advance, preserve and promote knowledge, critical thinking and intellectual independence to enhance the understanding, development and well-being of individuals and society. It will achieve this by building on foundations of broad research and teaching capabilities, unique campus learning environments, its nationwide presence and mana, and international links.

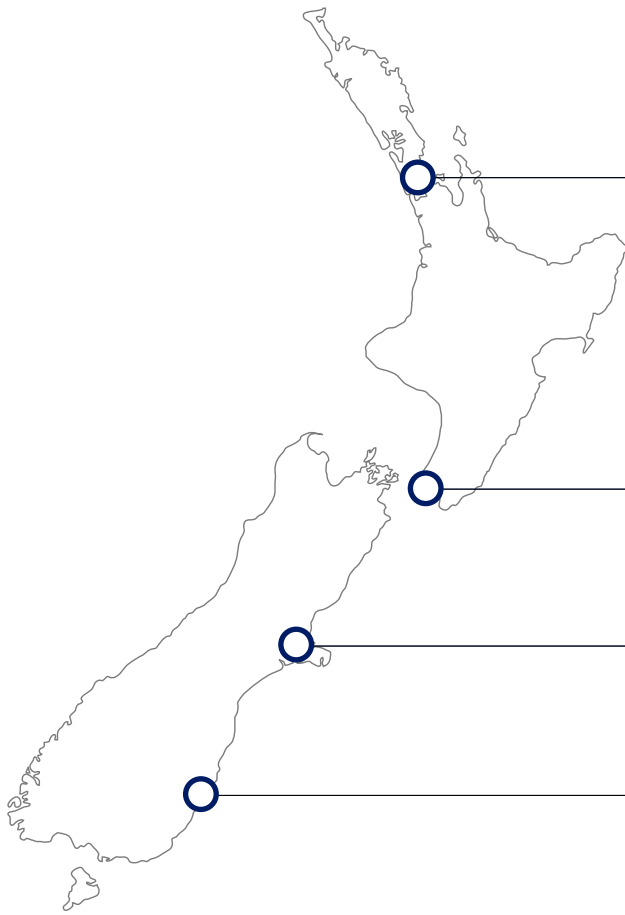


## KO TE UARATANGA

Ko tā Te Whare Wānanga o Otāgo he whanake, he pupuri, he whakatairanga hoki i te mātauranga, i te ihomatua tātari kaupapa, i te whakaaroaro motuhake o te tangata, e nui ake ai te mōhio, te marama, te hiatotanga, otirā, te oranga o te tangata, o te iwi hoki. E tutuki ai tēnei mā te rangahau me te tika mārika o te whakaako, mā te whai wānanga ahurei, mā te whakaū i tōna mana, me ōna toronga puta noa i te motu, i te ao.

## CONTENTS

|   | Page |
|---|------|
| Mission   | 3    |
| Locations   | 5    |
| Council of the University                         | 6    |
| Senior Management                                 | 7    |
| Organisation Chart                                | 8    |
| Chancellor's Introduction                         | 10   |
| Vice-Chancellor's Review                          | 12   |
| Planning and development                          | 13   |
| University governance and policy                  | 14   |
| Internationalisation                              | 15   |
| People  | 16   |
| Enrolment   | 20   |
| Funding   | 21   |
| Capital development                               | 22   |
| Outlook   | 23   |
| Teaching, Learning and Assessment                 | 25   |
| Academic divisions                                | 30   |
| Statement of service performance                  | 34   |
| Cost of output                                    | 43   |
| Research & Postgraduate Teaching                  | 45   |
| Achievements and developments                     | 45   |
| Publications                                      | 49   |
| Postgraduate teaching                             | 49   |
| Statement of service performance                  | 51   |
| Cost of output                                    | 56   |
| Community Service                                 | 58   |
| Library services                                  | 58   |
| New Zealand Marine Studies Centre                 | 59   |
| Community Relations                               | 60   |
| Media   | 60   |
| The arts  | 61   |
| Conferences and seminars                          | 61   |
| Alumni  | 63   |
| Statement of service performance                  | 65   |
| Cost of output                                    | 69   |
| Student Support                                   | 71   |
| Statement of service performance                  | 71   |
| Staff Support                                     | 82   |
| Statement of service performance                  | 82   |
| Partnership with Iwi                              | 90   |
| Statement of service performance                  | 90   |
| Management  | 96   |
| Statement of Service Performance                  | 96   |
| Statement of Resources                            | 104  |
| Equal Opportunities                               | 106  |
| Financial Review                                  | 109  |
| Statement of Responsibility                       | 112  |
| Statement of Accounting Policies                  | 113  |
| Statement of Financial Performance                | 118  |
| Statement of Movements in Equity                  | 119  |
| Statement of Financial Position                   | 120  |
| Statement of Cash Flows                           | 121  |
| Reconciliation of the Net Surplus from Operations | 123  |
| Statements of Cost of Services                    | 124  |
| Statement of Commitments and Contingencies        | 126  |
| Notes to the Financial Statements                 | 127  |
| Report of the Auditor-General                     | 138  |
| Summary Facts and Figures                         | 140  |



**AUCKLAND CAMPUS**

**University of Otago House**

Executive Development Programmes  
Course Information and Recruitment  
Distance Education  
Employer Liaison  
Teaching & Conference Multimedia Facilities

**WELLINGTON CAMPUS**

**Wellington School of Medicine & Health Sciences**

Research and Clinical Training  
Bachelor of Health Sciences (Radiation Therapy)  
Postgraduate Courses  
Distance Education

**University of Otago Stadium Centre**

Course Information and Recruitment  
Human Performance Testing  
Sports Medicine Consultancy  
Clinical Training  
Teaching & Conference Multimedia Facilities

**CHRISTCHURCH CAMPUS**

**Christchurch School of Medicine & Health Sciences**

Research and Clinical Training  
Postgraduate Courses  
Distance Education

**DUNEDIN CAMPUS**

**Main Campus**

Divisions of  
Health Sciences  
Humanities  
School of Business (Commerce)  
Sciences  
Administration



## COUNCIL OF THE UNIVERSITY



Back row: Associate Professor J R Broughton, Mr B A Aitken, Associate Professor J P Allan, Mr T D Scott  
Third row: Ms J A Flood, Mr E W Ellison, Ms K A Smith  
Second row: Mr G J Marsh, Mr N R Lanham, Ms N K Walmsley, Mr J F Ward  
Front row: Mr G F Goldsmith, Mr L J Brown, Mr E S Edgar, Dr G Fogelberg, Miss L P Isaacs  
Absent: Professor H Hayne, Mrs S Turner

## OFFICERS OF THE UNIVERSITY

### Chancellor

Eion S Edgar DCNZM BCom(Otago) FCA ACCM

### Pro-Chancellor

Lindsay J Brown BCom(Otago) FCA CMA

### Vice-Chancellor

Graeme Fogelberg BCom(NZ) MCom(Well) MBA PhD(W Ont) FCA

### Secretary to the Council, and Registrar

Jan A Flood DipPhEd(Otago)

## COUNCIL

### Appointed by the Minister of Education

Edward W Ellison

John F Ward BCom(Otago) CA

### Elected by the academic staff

Harlene Hayne BA(Colorado College) MS PhD(Rutgers)

John R Broughton ED BSc(Massey) BDS Dip Grad(Otago)

James P Allan BA LLB(Qu) LLM(Lond) PhD(HK)

### Elected by the Court of Convocation

Bruce A Aitken LLB(Otago)

Lorraine P Isaacs MA(Otago and Hawaii)

Lindsay J Brown BCom(Otago) FCA CMA

### Elected by the general staff

Nicola K Walmsley BSc(Hons)(Otago)

### Appointed after consultation with central organisation of employers

Graeme J Marsh CBE BCom(Otago) FCA FNZIM

### Appointed after consultation with central organisation of workers

Kristine A Smith BA(Otago) RPN

### Appointed by the Students' Association

Nicholas R Lanham

Juanita C De Senna (until September)

Glenn F Goldsmith (from September)

### Appointed by the Dunedin City Council

Sukhi Turner BA(W Virg)

### Co-opted

Eion S Edgar DCNZM BCom(Otago) FCA ACCM

Trevor D Scott BCom(Otago) ACA FNZIM

### Ex officio

The Vice-Chancellor

## SENIOR MANAGEMENT

### Vice-Chancellor

Graeme Fogelberg BCom(NZ) MCom(Well) MBA PhD(W Ont) FCA

### Deputy Vice-Chancellor (Academic)

Philip H Meade BSc BEd(Qld) MA(La Trobe) PhD(NSW) FACE

### Deputy Vice-Chancellor (Research and International)

Ian O Smith BE(Hons) PhD(Qld) FTSE FIEAust FIPENZ CPEng

### Assistant Vice-Chancellor (Commerce)

David H Buisson MSc PhD(Auck) SM(MIT) FNZIC FNZIFST MRSNZ

### Assistant Vice-Chancellor (Health Sciences)

Linda J Holloway ONZM MB ChB MD(Aberd) FRCPA

### Assistant Vice-Chancellor (Humanities)

Alistair G Fox MA(Cant) PhD(W Ont)

### Assistant Vice-Chancellor (Sciences)

Ronald A Heath BSc(Hons)(Cant) PhD(Well)

### Chief Financial Officer

A John Patrick BCom(Otago) CA CMA

### Director of Information Services

Martin Anderson BSc(Hons) MBA(Otago) FNZCS

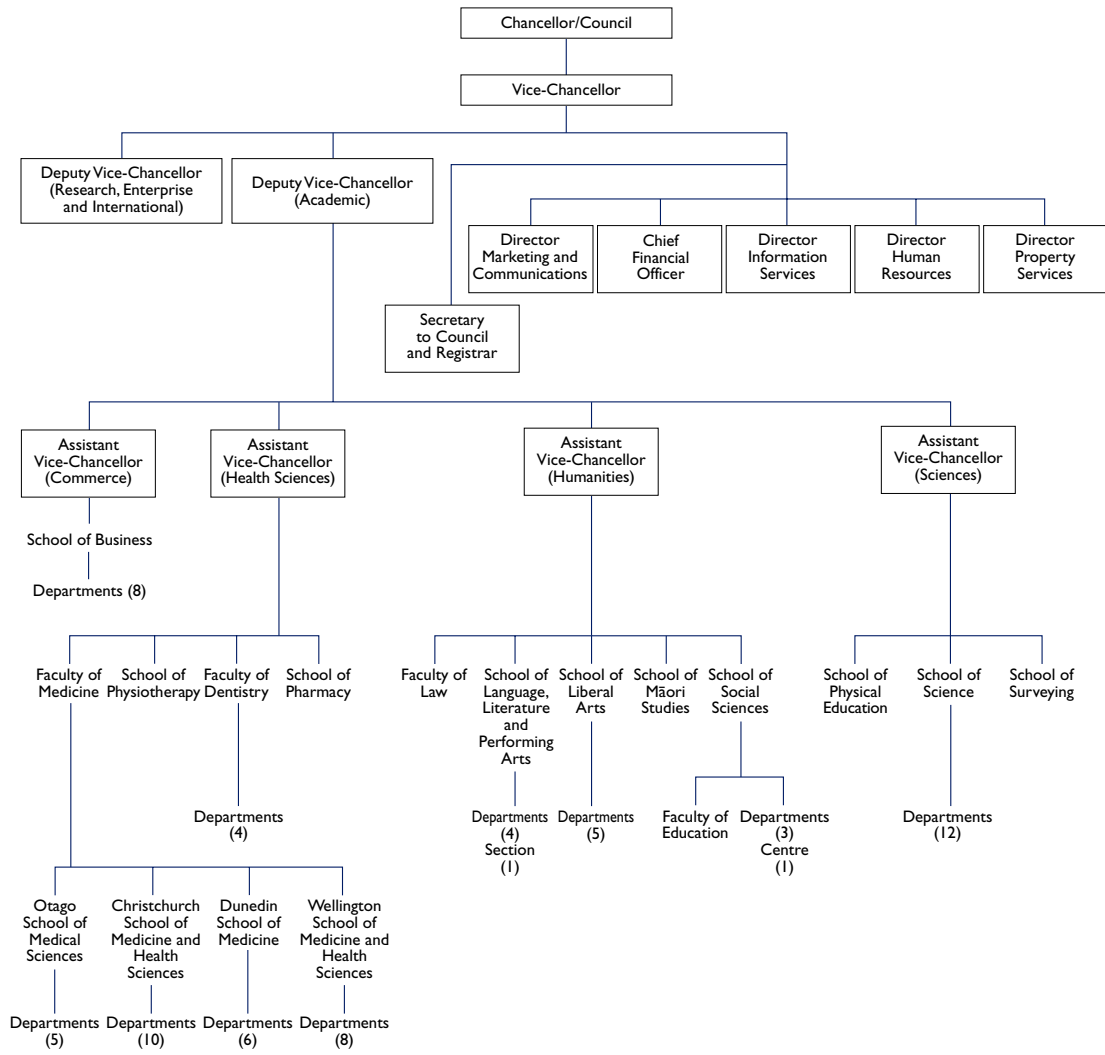
### Director of Marketing and Communications

Phillip R McKenzie BEc(Syd)

### Secretary to the Council, and Registrar

Jan A Flood DipPhEd(Otago)

# ORGANISATION CHART







## CHANCELLOR'S INTRODUCTION

I take pleasure in presenting the Annual Report of the University of Otago for 2003. It was an eventful year, with some notable highlights and a number of unresolved concerns.

As the governing body of an institution of significant standing, the Council regards the quality of the University's professional leadership as one of its key differentiating factors. With regret it is noted that this will be the last Annual Report in which the Vice-Chancellor's review is presented by Dr Graeme Fogelberg. Dr Fogelberg will retire during 2004 after more than a decade of distinguished service to the University. He came to Otago with an already established reputation as a strong educational leader with outstanding management and financial skills. As the administrative and academic head of the University he has led a period of prolonged growth and he has successfully overseen major changes in structure, procedures and philosophies.

After a rigorous international search, the Council was pleased to announce the appointment of Professor David Skegg to the Vice-Chancellor's position. Professor Skegg, an Otago graduate and former Rhodes scholar, is a world-renowned cancer researcher and head of the University's Department of Preventive Medicine. He will step into his new role in August of 2004.

Clearly, two of the major issues that both the Council and senior management of the University will have to grapple with in the forthcoming year will be chronic tertiary sector underfunding and the impact of the first round of Performance-Based Research Funding. Regardless of the outcomes of the PBRF assessment exercise, the move into the new funding system will require wise and resolute leadership if the University is to continue to be successful in pursuing its vision of being a research-led university with an international reputation for excellence.

**Lindsay J Brown**  
Chancellor 2004





## VICE-CHANCELLOR'S REVIEW

### Introduction

In a Christmas message delivered through the editorial columns of the *Otago Daily Times*, the retiring Chancellor of the University expressed a sentiment with which I heartily concur. He used these stirring words from the opening of our graduation ceremonies: *He aha te mea nui o te ao? Maaku e kii ake. He tangata, he tangata, he tangata. What is the most important thing in the world? I will say: It is people, it is people, it is people!*

The year in review has been a fruitful one, noted for the intensity of some of the issues that the University has had to deal with, but marked also by reminders of the importance, above all else, of the people who make up the University community. Alongside the satisfactions of outstanding achievement and generosity of spirit, we have experienced sadness in the loss of loyal friends.

A major issue this year has been the need to achieve a balance between the available supply of student accommodation and the efficiencies that come from continued growth. A shortage of beds in Halls of Residence at the beginning of the academic year, along with relentless pressure on staffing, the library, computer laboratories and lecture theatres, raises an important strategic question relating to the University's long-term growth. While the concept of an elite university may not sit well in a New Zealand context, I believe that if we are to rank with the best universities in the world then we must be prepared to maintain standards of academic excellence that may be threatened if we allow the University to outgrow its infrastructure.

The formal establishment of the new Crown entity, the Tertiary Education Commission – Te Amorangi Mātaurangi Matua – was announced in February. This new structure, designed to bring all tertiary functions under one administrative umbrella, is intended, in the words of the Associate Minister of Education (Tertiary), to bring "clear strategic direction" to the system. I share an alternative view, that the commission has the potential to be a mechanism for the Minister to indulge in micro-management of institutions. Whether it can achieve its mission "to inspire excellence, demand relevance and improve access" without jeopardising the essential independence of the University remains to be seen. I do not agree with the view expressed by the head of the commission, Dr Andrew West, that universities are not truly independent because they are underwritten by the Government. I can only reiterate the essence of my comments of 12 months ago, that the spectre of government interference strikes at the very heart of the idea of a university as a community of scholars working in a climate free from political interference.

Certainly the issue of tuition fees maxima, which surged back and forth on the political tide during the year, has been a threat which was not resolved until the last days of the year, when the University received permission to raise some fees above the maxima already established by Government. The University still finds itself in an inequitable position because of our early freezing of fees at levels mostly lower than those of other universities. No-one in Government can provide me with a rational reason as to why some universities can receive higher tuition fees for identical degrees and yet still receive the same amount of government funding per student. The situation is totally inequitable and it would seem is designed simply to pander to the student vote.

It was also interesting to note that Government has decided that university councils cannot be relied upon to set tuition fees. If Government was funding New Zealand's universities at rates comparable to those in, say, the United Kingdom or Australia then there might be a basis for this course of action. But the reality is that it is not. Quite simply it is impossible to have a university sector which is of true international standing if the total funds available to the sector's members are significantly less than in other developed countries.

One outcome of the creation of the new commission has been a demand for universities and other tertiary institutions to produce charters and profiles. The charter sets out an institution's goals and

its place in the tertiary system, while the profile shows how it will achieve those goals. While Otago's defining statement, "a research-led university with an international reputation for excellence", has received approval, the full impact of these energy-hungry documents will not be felt until 2005.

The other major political innovation of the year was Performance-Based Research Funding (PBRF). In the face of warnings from the United Kingdom, where the introduction of a similar system appears to have had a catastrophic effect on teaching in many universities and is claimed to have diverted attention from research to publication, PBRF has been put in place in New Zealand. The outcomes will become clearer in the ensuing year.

A highlight of a different nature was to see to fruition the University's ambitious plan to produce Puccini's opera *Madama Butterfly*. Critics and public alike voted the performances a great success. It was especially thrilling to see so many Otago graduates, some of whom are already forging world-wide reputations, in leading roles.

I am pleased to note that the University continued its proud record of success in producing Rhodes scholars. The latest to receive an award is Otago University Students' Association vice-president Glenn Goldsmith. Mr Goldsmith, who was also a student representative on the University Council, has just completed LLB and BA degrees. He is Otago's 47th Rhodes scholar.

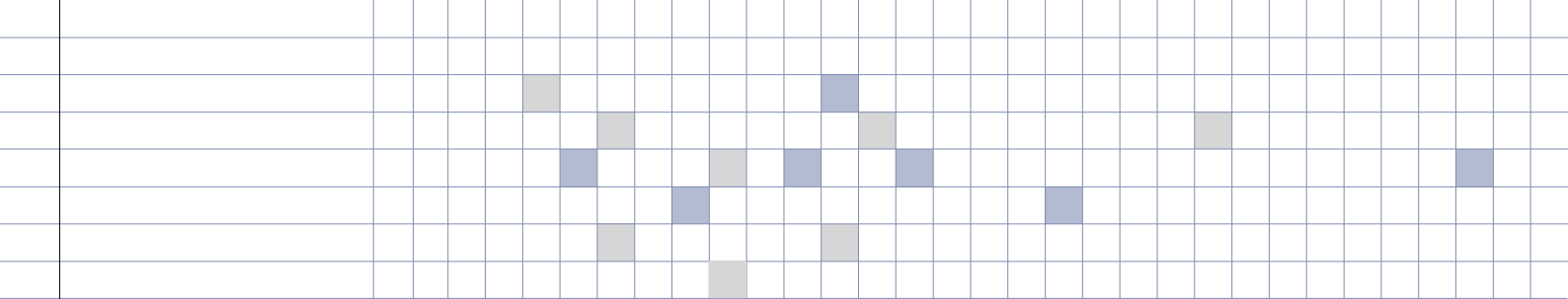
In my introduction last year I observed that the legislative changes then proposed, and now largely enacted, seemed likely to replace a relatively simple, albeit underfunded, system with a more complex and still underfunded system. There is no question that underfunding remains a key concern that threatens the lifeblood of the University. The financial pressures were felt earlier in the year than ever before, with unanticipated monthly operating deficits seen as early as March. The situation at the end of the year is not encouraging, although I am delighted that our Advancement Campaign strategies are proving to be fruitful.

## Planning and development

The major University development initiative in 2003 was a submission seeking funding through the Government's Partnerships for Excellence scheme, designed to foster cooperative activities between tertiary institutions and donors by providing matching funding for major investment projects. The University's *Leading Thinkers* submission proposed investment in human capital by the creation of "knowledge leader" positions and cutting-edge research in critical areas. This ambitious programme built on our advancement and fund-raising campaign introduced last year.

The University was delighted to be advised late in November of the success of our application. I believe the strength of Otago's proposal was that it will be a large-scale investment in human capital rather than bricks and mortar. The *Leading Thinkers* programme comprises a set of individual projects designed to build academic strength by supporting existing "knowledge leaders" and by adding new positions. As well as matching the Government's tertiary education priorities, the programme clearly aligns with broader national economic and social goals. The Advancement Campaign has been built around the idea of private and community interests partnering the University in a national endeavour. It was very pleasing to have the Government also joining in this spirit of partnership.

The Government commitment is to match private funds up to \$25 million. By the end of 2003 the University had secured private commitments of approximately \$11 million, over \$8 million of which will qualify for matching funds. The Advancement Campaign has thus secured a total committed sum of more than \$19 million. The majority of this sum will be invested through the University of Otago Foundation Trust, with the income providing project support in perpetuity.



During the year, two “knowledge leader” Advancement projects were begun. Professor Rod McLeod joined the University as the first South Link Health Chair in Palliative Care and Professor Jim Mann became the first director of the Edgar National Centre for Diabetes Research and Education. The scene is set for as many as 10 initiatives to be put in place during 2004, with a broad spread across university disciplines. These are likely to include the Ron Lister Chair in Geography, the Community Trust of Otago Centre for Trace Element Analysis, the McKenzie Medical and Surgical Repatriation Fellowship, the Dunedin City Council Chair in Entrepreneurship and the Canterbury Medical Health Foundation Chair in Parkinson’s Diseases.

The Advancement programme also encompasses awards and undergraduate scholarships. The Carl Smith Medal for Emerging Researchers was awarded for the first time and the first three Transpower Applied Science Scholarships were also taken up. Two Otago University Development Society Trailblazer Scholarships were awarded, as were the first two Alexander McMillan First-in-Family Scholarships and a J and L Callis First-in-Family Scholarship. The Trailblazer and First-in-Family scholarships are designed to introduce and reinforce the idea that a university education is possible for any New Zealander. As well as fees, they provide for the first year’s accommodation in a Hall of Residence, thus introducing scholars to Otago’s unique developmental campus experience.

I am very confident that the *Leading Thinkers* Advancement Campaign will significantly influence the standing of the University and the contribution it makes to the nation.

14

The other major development issue during the year has been one of strategic direction. We may be close to the time when serious consideration has to be given to restricting the number of students who come to Otago and concentrating on attracting the best academic students, rather than pursuing our present policy of growth. With the student head-count having risen this year by 5% the University’s infrastructure is feeling the strain, with most buildings full and a lack of available space or cash for substantial new development. I fear that uncontrolled expansion may threaten the essential character of the University of Otago.

### University governance and policy

In October the University Registrar called for nominations for the post of Chancellor for 2004, following an announcement by the incumbent, Eion Edgar, that he intended to step down from Council membership at the end of the year. At the November meeting of Council, the Pro-Chancellor, Lindsay Brown, was elected Chancellor for 2004. Mr Brown has been a Council member for 11 years and currently represents the Court of Convocation. He is a graduate of the University (BCom 1965), a former partner in Deloitte Touche Tohmatsu and a director of a number of organisations, including Southern Community Laboratories, Dunedin International Airport and Mercy Hospital Dunedin.

At the December graduation ceremony the retiring Chancellor, Eion Edgar, was awarded an Honorary Doctorate of Laws, an acknowledgement of his 23 years of committed service as well as his generosity to the University and the community. Mr Edgar had been Chancellor since 1999 and a Council member since 1981. He has given outstanding service and, as Vice-Chancellor, I have greatly appreciated the constructive working relationship we have had.

At its final meeting of the year, the Council elected Bruce Aitken Pro-Chancellor for 2004. Mr Aitken has been a Council member since 1985 and is Master of Knox College. He also represents the Court of Convocation and is an Otago law graduate. At the same meeting Council farewelled two members, Professor Harlene Hayne, who represented academic staff, and Graeme Marsh, who was appointed to the Council by organisations representing employers. Mr Marsh has given 13 years of outstanding service to the University.

A Māori language policy adopted from the start of the year will ensure that Māori can be used in all examinations and assessments. Other initiatives are also in place to encourage the development of an environment that is welcoming for Māori. These include full-fees subsidies for staff taking Māori language papers, the translation of key documents into Māori and the provision of bilingual signs. An orientation programme specifically designed for first-year Māori students was also introduced.

A formal ceremony held at the Otago Museum saw the University hand over about 330 boxes of human remains to Ngāi Tahu. The remains have been housed in the Department of Anatomy, some for over a century. The koiwi were received by Edward Ellison, deputy leader of Ngāi Tahu and a member of the University Council. This was a difficult cultural issue brought to a satisfactory conclusion through a spirit of cooperation.

After lengthy development and robust debate around the University and in both Senate and Council, the University Council adopted a policy for research consultation with Māori. The policy will see Ngāi Tahu consulted before proposals that are likely to result in project research gain approval.

### Internationalisation

A delegation of University staff led by Professor Alistair Fox went to Samoa and Fiji to sign agreements with the University of the South Pacific and the National University of Samoa. The agreement will see Pacific students taking courses through the University of Otago before coming to Dunedin for postgraduate work and will also enable Otago staff and students to work or study at the Pacific universities. I plan to visit both countries to host functions for alumni groups in 2004.

In a ceremony that included the Mexican Ambassador to New Zealand, His Excellency Jorge Alvarez, the University signed a memorandum of agreement with Mexico's largest research university, Universidad Nacional Autónoma de México. A new exchange agreement signed with Université Jean Moulin – Lyon III breaks new ground in that it encourages exchanges at PhD rather than undergraduate level.

Among other international activities, the University's growing links with Latin America were strengthened by a visit of an 11-strong group of senior staff from seven Chilean universities, the Universities of Sydney and Otago formed an alliance to offer collaborative postgraduate radiation therapy programmes by distance learning, and a group of Malaysian surveyors and postgraduate students spent a week in Dunedin studying New Zealand land development and administration techniques.

The University was honoured to be able to host Crown Prince Haji Al-Muhtadee Billah of Brunei, who spent a day on a courtesy and familiarisation visit. About 20 Brunei students are studying health sciences subjects under an agreement signed in 1998.

The University's new internationalisation management plan, which was endorsed by the Council at its July meeting, established that international students will make up no more than 12% of the University's total EFTS roll from 2004. The ceiling has for some years been set at 10%.

## People

This has been a year of outstanding achievement, but also one of heartfelt loss. I remain committed to the belief that above all else the outstanding people in our University community make Otago what it is.

### Achievements

So many individuals have scaled the heights of academic achievement in such a wide variety of ways that it is perhaps invidious to select. Nevertheless I wish to mention some who have made a significant difference to the life and reputation of the University in the past 12 months.

Four Otago academic staff members were named to chair government-appointed peer review panels to assess the quality of staff research which is the major component of the Performance-Based Research Funding allocation by the Tertiary Education Commission. Among the chairs of the 12 panels were James Cook Research Fellow and Emeritus Professor Erik Olssen (humanities and law panel), Professor Carolyn Burns (biological sciences, agriculture and environment), Professor Vernon Squire (mathematical and information technology and sciences) and Professor Peter Joyce (health).

Professor Charles Higham (Anthropology) was awarded a prestigious James Cook Research Fellowship, one of four announced by the Royal Society of New Zealand. Professor Higham, who was appointed to the foundation chair of Anthropology at Otago in 1968, will now resign from his position in the University but will retain his links with Otago while he writes a book on the origins of the Angkor civilisation in Thailand.

The speaker at the 17 May graduation ceremony was Dunedin-born Malcolm Templeton, who also graduated with an earned Doctor of Literature degree. Dr Templeton was formerly Deputy Secretary of Foreign Affairs, Deputy Head of the Prime Minister's Department and New Zealand Ambassador to the United Nations. His address attracted media attention with his call for a moral basis for foreign policy.

Noted Dunedin author Lynley Hood received a Doctor of Literature degree at the 13 December graduation. While the award acknowledged the outstanding literary quality of all four of her published books, her examiners noted the particular merit of her most recent work, *A City Possessed*, which investigates issues surrounding the infamous Christchurch Civic Creche case. The same August graduation saw another uncommon award when Dunedin orthodontist Chris Robertson received his Doctor of Dental Surgery degree based on 15 years of research into prevention of obstructive sleep apnoea.

Emeritus Professor Richard Dowden was made a Fellow of the American Geophysical Union. The honour was an acknowledgement of his work in pioneering a worldwide lightning monitoring network based in Dunedin. Professor Dowden remains a leading international researcher after his retirement from the Department of Physics in 1998.

Associate Professor John Dawson (Law) was awarded the inaugural Law Foundation International Research Fellowship to study legal aspects of compulsory community psychiatric care. Associate Professor David Gerrard was appointed chairman of the New Zealand Sports Drug Agency Board.

Professor Rick Sibson was elected a Fellow of the Royal Society of London, bringing to only nine the total number of New Zealanders honoured in this way. Professor Sibson's work in understanding earthquakes has made him a world leader in his field and has helped connect the disciplines of structural geology and seismology.

Nigel Jamieson, a senior lecturer in the Faculty of Law, received the degree of Doctor of Laws, attracting high praise from the examiners for the breadth of his scholarship which straddled philosophy, law, psychoanalysis and theology.

Associate Professor Peter Schwartz (Pathology) won a national award for tertiary teaching excellence. The Prime Minister's Supreme Award included a \$30,000 prize. The citation accompanying the award made mention of Professor Schwartz's philosophy of focusing on the intellectual and emotional development of the learner. Another Otago academic to be honoured in the same ceremony in Wellington was Associate Professor Steve Jackson (Physical Education), who won an award for sustained excellence, a recognition of his pastoral support of students and his efforts to provide research opportunities for them.

Associate Professor Jim Reid, who heads the Dunedin School of Medicine's Department of General Practice, was made a Distinguished Fellow of the Royal New Zealand College of General Practitioners. The award recognised his outstanding service to medicine and his 31 years in general practice. The college also awarded an honorary fellowship to senior teaching fellow Tony Egan (Medical Teaching Support Unit and Obstetrics and Gynaecology).

In an initiative taken by the Otago University Students' Association, Professor Geoffrey White (Psychology) was named the University's postgraduate student supervisor of the year. Others to receive recognition from the postgraduate students were Professor Steve Brennan (Christchurch School of Medicine and Health Sciences), Dr Gerry Closs (Zoology), Dr Jim Cotter, Dr Ken Hodge and Associate Professor Steve Jackson (all Physical Education), Dr Julian Eaton-Rye (Biochemistry), Dr Ruth Fitzgerald (Anthropology), Associate Professor Sheelagh Matear (Marketing) and Dr Tim Molteno (Physics).

Professor John Moorfield (Te Tumu – School of Māori Studies) received media attention at the time of the publication of a new book introducing the fundamental elements of Māori culture. Professor Moorfield was joint editor, with Professor Tania Ka'ai and Dr Michael Reilly (both also Te Tumu) of *Ki Te Whaiao: An Introduction to Māori Culture and Society*.

Professor Donald Evans, director of the University's Bioethics Centre, was appointed to a new high-level Canadian advisory body on stem-cell research, one of only two appointees from outside North America. Through his involvement with New Zealand's Independent Biotechnology Advisory Council, Professor Evans earlier produced a guide to the ethics of cloning and stem-cell research.

Dr John Adams, Dean of the Dunedin School of Medicine, was made a Fellow of the New Zealand Medical Association, a recognition of his former role as chairman of the association from 2001 until April of this year.

Dr Leanne Hodson (Human Nutrition) was awarded a Girdlers' New Zealand Health Research Council Fellowship which will take her to Oxford University for two years to continue her work in the area of insulin resistance.

Dr Kathryn McGrath (Chemistry) was awarded the Easterfield Medal by the New Zealand Institute of Chemistry. The medal is awarded to New Zealand chemists under the age of 35, recognising the quality and originality of their research work.

A former Chancellor of the University, Jim Valentine (Hon LLD 1990), was honoured by the Institute of Directors with the Distinguished Fellow Award. Retiring Chancellor Eion Edgar was presented with the Institute of Chartered Accountants award for valued contribution to the profession, a recognition of his pivotal role in the expansion of Dunedin-based sharebroking and investment firm Forsyth Barr, of which he is chairman, and of his contribution to the business community of New Zealand.

### Honours

Two distinguished members of the University were named in the Queen's Birthday Honours List this year. Chancellor Eion Edgar was awarded the Distinguished Companion of the New Zealand Order of Merit for his outstanding contribution to education, business and sport in Otago. The award was conferred on 5 August by the Governor-General, Dame Silvia Cartwright, herself a distinguished Otago graduate. Professor Frank Griffin (Microbiology) became an honorary Officer of the New Zealand Order of Merit (ONZM) for his services to science.

A number of people with connections to the University were named in the New Year's Honours List, released on the last day of the old year. Prominent among them was Emeritus Professor Weston (Wes) Sandle, who became an Officer of the New Zealand Order of Merit (ONZM) for his services to science. Emeritus Professor Sandle has most recently been associated with the University's research into a fifth state of matter and is also acknowledged as the leading figure in laser research and teaching in New Zealand.

Others to be honoured included Information Services teaching facilities manager Lala Frazer, who received a Queen's Service Medal (QSM) for her contribution to conservation and the Otago community. Well-known Otago artist and former Frances Hodgkins Fellow Grahame Sydney was made an Officer of the New Zealand Order of Merit for services to art, while equally prominent writer Philip Temple, a former Robert Burns Fellow, received the same honour for his services to literature.

### Retirements

Several academic staff retired over the past 12 months after giving more than 20 years' service to the University. Professor Charles Higham, who was first appointed to the University in 1966 and has been professor of Anthropology since 1968, will continue his stellar career after his appointment as a James Cook Research Fellow. The University also farewelled Associate Professor Edwin Arnold (Surgery, Christchurch School of Medicine and Health Sciences) after 30 years of service and Professor Gil Barbezat, who has been with the University for 25 years in key research and teaching support positions, notably as head of the Wellcome Research Centre for a number of years.

Professor Peter Holland (Geography) has retired after 21 years at Otago. He has made his mark not only as a fine academic and teacher but as a willing participant in many administrative roles. Professor Chris Lovell-Smith (Pathology) announced his intention to retire from the end of January 2004. Professor Lovell-Smith has headed the Medical Laboratory Science programme since its inception. Paul Wooding, a long-term staff member and current head of department in Economics, also announced his plans to retire from 31 January.

General staff members who retired after giving long and notable service included a number whose roles gave them prominence in University affairs. Jeanette Crosado (Medical and Surgical Sciences), who began her employment at the University in 1969, had a particular interest in staff and employment issues. Wishia Sutherland (1971) was for many years the face who greeted visitors at the Registrar's door. Islay Little (1981) was a significant member of the University in her role as circulation librarian.

Others to retire after more than 20 years service are John Cunningham (Property Services), Glenys Roome (Student Health), Lee Mullen (telephonist), Sue Cathro (Economics, and also Federation of Graduate Women's affairs), Ann Sharp (Clothing and Textile Sciences) and Denise Rodger (School of Dentistry).

## Deaths

It is a sad inevitability that each year I record the loss of friends and former staff members who have made a significant contribution to the University. It is all the more difficult to note the passing of current members of staff. The University community was greatly saddened by the sudden death in September of head of Alumni and Development, Mrs Gill Parata, at the age of 56. She was an inspirational team leader who committed enormous energy and enthusiasm to building strong alumni ties around the world. Her attention to detail and protocol served the University well in its international relations. She was first appointed to the University in 1991 and served as head of the international office then as an adviser in international and community relations before assuming her alumni and development position in 2000.

Several other well-known members of staff died during the year. Dr David Murray, who had been a member of the Department of Geography since 1970, died in January. Dr Robin Law (Geography) died aged 47 after a long battle with illness, Dr Mark Tunstall, a scientist in the Department of Anatomy and Structural Biology, died unexpectedly at his desk in July at the age of 39, and Gerald Stokes, who had worked for the University for 35 years as a histology technician, died in December.

A number of outstanding former staff members of the University also died during the year. Prominent among them were Sir John Walsh and Emeritus Professors Margaret Dalziel and John Hunter. Sir John was a former Dean of the Dental School and a world leader both in his profession and in dentistry education. Emeritus Professor Dalziel was an English scholar, former head of department and Pro-Vice-Chancellor of the University. Emeritus Professor Hunter was a successful cardiac surgeon who became Dean of the Otago Medical School and later Assistant Vice-Chancellor Health Sciences.

The University also noted with sadness the passing of a number of other academics who had played important roles in the life of the University. They included Emeritus Professors Thomas (Peter) McKellar (Psychology), Geoffrey Baylis (Botany), Kaj Westerkov (Zoology), Marion Robinson (Human Nutrition), Dr Don Brasch (Chemistry) and Mrs Nicola Grimmond (Zoology).

The University's oldest surviving graduate died in September, aged 103. She was Dr Olga Jardine (nee Gloy), who graduated with a bachelor's degree in Home Science in 1921. She went to the United States, earned a doctorate from Columbia University and was later an Associate Professor in Home Science. She moved to Canada in 1946.

## Appointments and promotions

Professor John Campbell, Dean of the Faculty of Medicine, was elected president of the Medical Council of New Zealand. He was until recently a member of the National Advisory Committee on Health and Disability.

Professor Gerald Pillay, Dean of the School of Liberal Arts, left in July to take up his appointment as Rector (Vice-Chancellor) of Hope University in Liverpool. Professor Pillay made a significant contribution to the academic and intellectual life of the University. Under his leadership the department of Theology and Religious Studies saw significant growth in research and postgraduate study.

Dr Clive Ronson (Microbiology) was appointed to the University's inaugural chair in Genetics. He joined the University in 1991 after five years as research director for a biotechnology company in the United States. His research group has attracted nearly \$3 million in external funds in the past five years.

Professor Julian Crane, an internationally-recognised asthma researcher, was appointed Associate Dean of Research at Wellington School of Medicine and Health Sciences. He is the director of the Wellington asthma research group.

Associate Professor Sally Brooker received the Federation of Asian Chemical Societies' Distinguished Young Chemist award and delivered an address at the 10th Asian Chemical Congress in Hanoi in March.

The University appointed two new professors in medicine at the Christchurch School in June. Professor Zoltan Endre came from the University of Queensland to take up the clinical chair of Medicine, while Professor Phillipa Kyle returned to her homeland after seven years in the United Kingdom to take up a clinical chair of Obstetrics and Gynaecology. Dr David Murdoch, an Otago graduate, was appointed head of the Department of Pathology at Christchurch School of Medicine and Health Sciences. Dr Elizabeth Dennett, an Otago graduate and a specialist in colorectal surgery, was appointed senior lecturer at Wellington School of Medicine and Health Sciences. Murray Whitworth, formerly principal of Tokomairiro High School in Milton, was appointed academic director of the University's language centre.

In recognition of outstanding contributions to research, teaching and community service, 10 staff were promoted to the rank of full professor, bringing the number of professors to a record high of 152. Those promoted were Associate Professors Terry Crooks (co-director, Educational Assessment Research Unit), John Dawson (Law), David Green (Anatomy and Structural Biology), Raechel Laing (Clothing and Textile Sciences), Neil McNaughton (Psychology), Markus Milne (Accountancy and Business Law), Roger Mulder (Psychological Medicine, Christchurch School of Medicine and Health Sciences), Robert Poulin (Zoology, also James Cook Research Fellow), Paul Trebilco (Theology and Religious Studies) and Jeff Wickens (Anatomy and Structural Biology). Dr Peter George (Pathology and Molecular Medicine, Christchurch School of Medicine and Health Sciences) received a clinical professorship.

Professor Vernon Squire (head of Mathematics) was appointed Assistant Vice-Chancellor (Sciences) from 1 February. He will succeed Dr Ron Heath who is retiring after 10 years in the position. Dr Heath, who came to the University from the National Institute of Water and Atmospheric Research (NIWA), has made a major contribution to the development of science teaching and research during his time at Otago.

Professor Rick Garside (head of History) became Dean of the School of Liberal Arts, replacing Professor Gerald Pillay. Dr Timothy Crack was appointed Professor of Finance and Quantitative Analysis and Professor Paul Mehigan, currently at the University of Melbourne, was appointed to a chair in Languages.

### **Enrolment**

The growth seen in recent years continued unabated, reflecting a period of successful strategic planning and implementation on both the domestic and international fronts. Total headcount numbers rose by 5%, from 18,026 in 2002 to 18,927 in 2003, with international student numbers increasing 39.8%, from 1,443 to 2,018, to comprise 10.7% of the total student body. The number of new students increased by 6.7% to another all-time high of 4,020 (3,766 in 2002).

A result of this growth was unprecedented pressure on student housing, particularly from the cohort entering the University at first-year undergraduate level. A potential crisis was averted only through a campaign for assistance which evoked a magnificent response from Dunedin residents willing to take students into their homes.

Postgraduate numbers, encompassing PhD, Masters, Postgraduate Diploma, Postgraduate Certificate and professional (law and overseas doctors) enrolments, experienced a 1.3% fall from 3,497 (18.8% of the total enrolment) to 3,450 (18.2%).

In 2003 the number of students who reported an iwi affiliation was 6.3% of the total student body (6.5% in 2002). For the sixth year in succession women comprised just over 55% of the total roll.

The roll growth (expressed in EFTS) was spread across all academic divisions, with Humanities and Commerce enjoying the biggest rises, 7.6% and 8%, to reach 4,917 and 3,460 respectively. Health Sciences rose 5.3% to 4,059, with Sciences up 5.1% to 4,196.

Strategies introduced during the year to attract more Pacific Islands students to Otago included a promotion at Auckland's Pacifika festival, more effective advertising and the placing of more resources into on-campus support services.

The University's Summer School continued to grow in numbers and popularity, generating about \$2 million in income in 2003. There were 1,123 students (up 17%) studying 37 papers (36 in 2002). Of the students enrolled, 90% were continuing their studies from 2002, while 3% were first-time students. The remainder were former students or had transferred from other institutions. At year's end, early indications were that the 2004 Summer School, due to start 5 January, would again experience record enrolment.

The Christchurch and Wellington Schools of Medicine and Health Sciences were also set to grow through a raised government cap on medical school numbers.

A new bonded scholarship scheme to help low-income students undertake health-related studies was announced by the Government in August. The impact will not be felt for some time, but it is hoped that it will widen the range of opportunities available to students.

## Funding

While there have been a number of government initiatives that may have a beneficial effect on the University's financial position, my primary concern continues to be the chronic level of under-funding experienced by the university system.

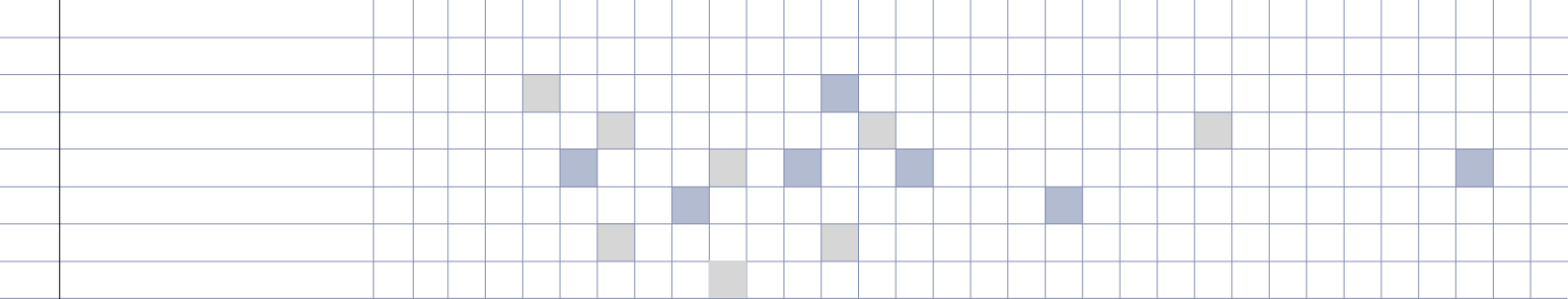
The Government announced it will make \$77.8 million additional funding available to tertiary education organisations for special initiatives to help fulfil aspects of the Tertiary Education Strategy. \$20 million will be available through an Innovation and Development Fund (IDF) and \$14 million through the eLearning Collaborative Development Fund. A further \$9.8 million will support the development of "e-learning", as study by electronically-based distance education has come to be known. The rest of the funding will be available for future projects. As welcome as these initiatives are, they are not a substitute for the core funding needed for the University's day-to-day teaching and research activities.

The other major change to income will undoubtedly be through Performance-Based Research Funding. At the end of the year the impact of this new scheme on the University was not known.

## Capital development

Several significant capital projects were undertaken this year. Major strengthening work is being carried out on the Geology building, one of our most important heritage structures, to make it more resistant to earthquakes.

Work began in September on the long-planned north-western campus entrance. This four-stage project involves improvements to St David Street, construction of a new pedestrian and vehicle



bridge across the Water of Leith and the relocation of the existing footbridge. The final stage, the improvement of the avenue between St David Street and the Union lawn, with widened paths, new paving and new planting, has long been envisaged as an essential element of an integrated campus plan. This development will give the University a main entrance from Cumberland Street.

There has been more than a decade of controversy over the need for improved bridge access at St David Street. An agreement was reached in June between the University and the Historic Places Trust to move the present footbridge five metres north and replace it with a "vehicle capable" bridge. The Otago Regional Council began its resource consent hearings into the bridge proposal on 17 December. By the end of the calendar year there was no decision.

A campus heritage precinct was created covering the central campus area where significant 19th century buildings include the Clocktower and registry building, Allen Hall, Marama Hall, the Archway, the professorial houses and the St David Street footbridge. The precinct is the result of two and a half years of negotiation between the University, the Dunedin City Council and the Historic Places Trust. The primary effect of the agreement will be to control new development to ensure it is in keeping with the heritage significance of the area.

At a hearing in May, the Environment Court confirmed the legal stopping of the Castle Street block adjacent to St David Street and the transfer of ownership to the University. Public foot access will not be hindered.

Another major project has been the development of the University Oval within the larger recreational area known as Logan Park. As I reported last year, the University and the Dunedin City Council together had planned to refurbish the former Dunedin Public Art Gallery, situated at the edge of the Oval, as part of the project. However, the project has been reconsidered in the light of rapidly rising costs. We have now reached a further agreement with the city council. Work is underway on the rebuilding of the historic grandstand, funded by the city and other donors, while the University will fund a new sports annexe which will house the University rugby club and include changing rooms, social rooms and a storage area. The ground area itself, which will retain the name University Oval, has been converted to a test-standard cricket pitch and has met with approval from players.

As a response to the crisis in student accommodation in February of this year, the University began construction work on two 50-room blocks at University College in May. The new wings, which are expected to cost \$8.8 million, will be open in time for the 2004 student intake.

The Information Services Building, completed in 2001, continues to attract accolades. It earned a Chamber of Commerce City Development Award for the way it links campus life with the rest of Dunedin and, at a Property Council of New Zealand ceremony, it won the excellence award for the education and art property sector and the energy-wise award for excellence in energy-efficient building design. It also won the Registered Master Builders award in the over \$1 million commercial project category.

The purchase of a \$1 million scanning electron microscope strengthened the University's place as a premier university in research circles. The Minister of Science, the Hon. Pete Hodgson, attended a function to mark the acquisition of the equipment.

A new \$6.5 million Zoology building in Great King Street was blessed by Ngāi Tahu kaumatua Huata Holmes and opened by the Chancellor in July. The three-storey Benham Building has offices for 27, as well as laboratories, a seminar room and specialist safety equipment. Sir William Benham was Professor of Biology from 1898 to 1937.

A critical lack of space is forcing some activities off campus. The University of Otago Press moved from its inadequate location in a Union Street cottage to rooms in a privately-owned building several blocks south of the main campus.

In an important name change, the former Hocken Building became the Richardson Building, to avoid confusion with the Hocken Library which is now located in its own building in Anzac Avenue. Sir John Richardson was a leading figure in early Otago and is generally acknowledged as one of the driving forces behind the decision to found the University. He held the post of "Vice Chancellor", the equivalent of the present-day Pro-Chancellor position.

The historically important University Staff Club, which has at various points in its life housed Dentistry, Law and the registry, underwent significant refurbishment this year.

The University has committed \$4.2 million to upgrade its computer network. The last upgrade work was completed in 1995 and is now regarded as too slow and too vulnerable. There are 10,000 computers hosted on the Dunedin network. The total upgrade will be undertaken systematically over the next three years.

## Outlook

A year ago I expressed confidence that the University had chosen a strategic path that would maintain its outstanding performance and reputation. The events of the past 12 months, though not without disappointments and political setbacks, have reinforced my view that the University of Otago is well equipped to enhance its position as a significant institution in a global context. The only major cloud on the horizon is the chronic underfunding situation that bedevils New Zealand's university system.

As I reach the end of my term as Vice-Chancellor, I can reflect on the pleasure of working with many outstanding people and on the satisfactions of many goals achieved. I would like to think that Otago has fulfilled its mission over the last decade and has positively influenced the quality of life, not only of the people of Dunedin, but of the whole nation. With the appointment of Professor David Skegg as its next Vice-Chancellor, Otago is well placed to continue its forward momentum. I look forward to working with him during 2004 to effect a successful transition to his leadership.

**Graeme Fogelberg**  
Vice-Chancellor