

# Integrated Community Energy

19 November 2021



People powered wellbeing, together

# Energy Hardship - Our 'Best Guess'



- 2% (36,000 homes) perform so badly that they urgently need to be replaced
- 8% (144,000) need deep retrofits – see slides below
- 20% (360,000) need major retrofits (multiple improvements required such as insulation, ventilation, draft stopping, etc)
- 40% (720,000) minor retrofits or repairs (such as provided by the WKH programme)
- 28% (504,000) are healthy and reasonably efficient but we could still find many opportunities to improve
- 2-3% (36,000) perform at a high standard from an international benchmark standard

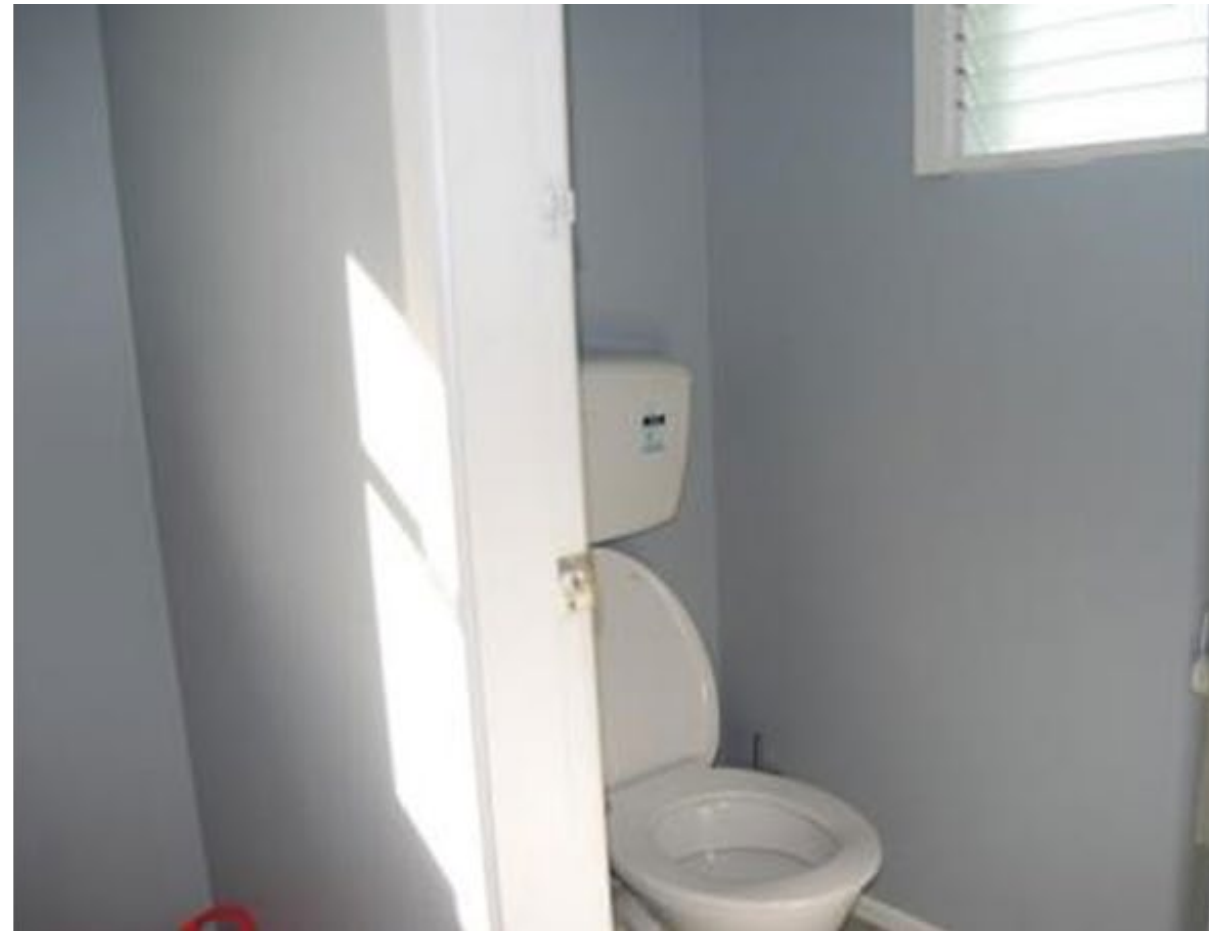
















What happens when the community gets to fully engage

- Local funders, service and product providers engage
- Empowered to fix other local problems
  - Education plays a big role and **goes both ways**
- More likely to find wrap around support

# Fixing Homes Isn't The Full Picture

Energy literacy and some form of ownership in the solutions is critical

We need to work out how to get communities engaged in how they generate and use energy



# Integrated Community Energy

- Everyone lives in highly efficient and healthy homes
- Each community make their own decisions about how they use their energy and how to spend revenue from generation/storage/flexibility trading
- Wellbeing frameworks are fit for purpose for each community
- We work with a wide range of stakeholders to support concepts like circular economy and food sovereignty to develop a deep and wide range of impacts.



How do we can we use the thousands of healthy home assessments and retrofits as well as a growing number of integrated community energy projects to generate quantitative and qualitative data that is good enough to be used for research and policy development?

Or how do we bring the practical, policy and theory people closer together so we can make big improvements, quickly?

