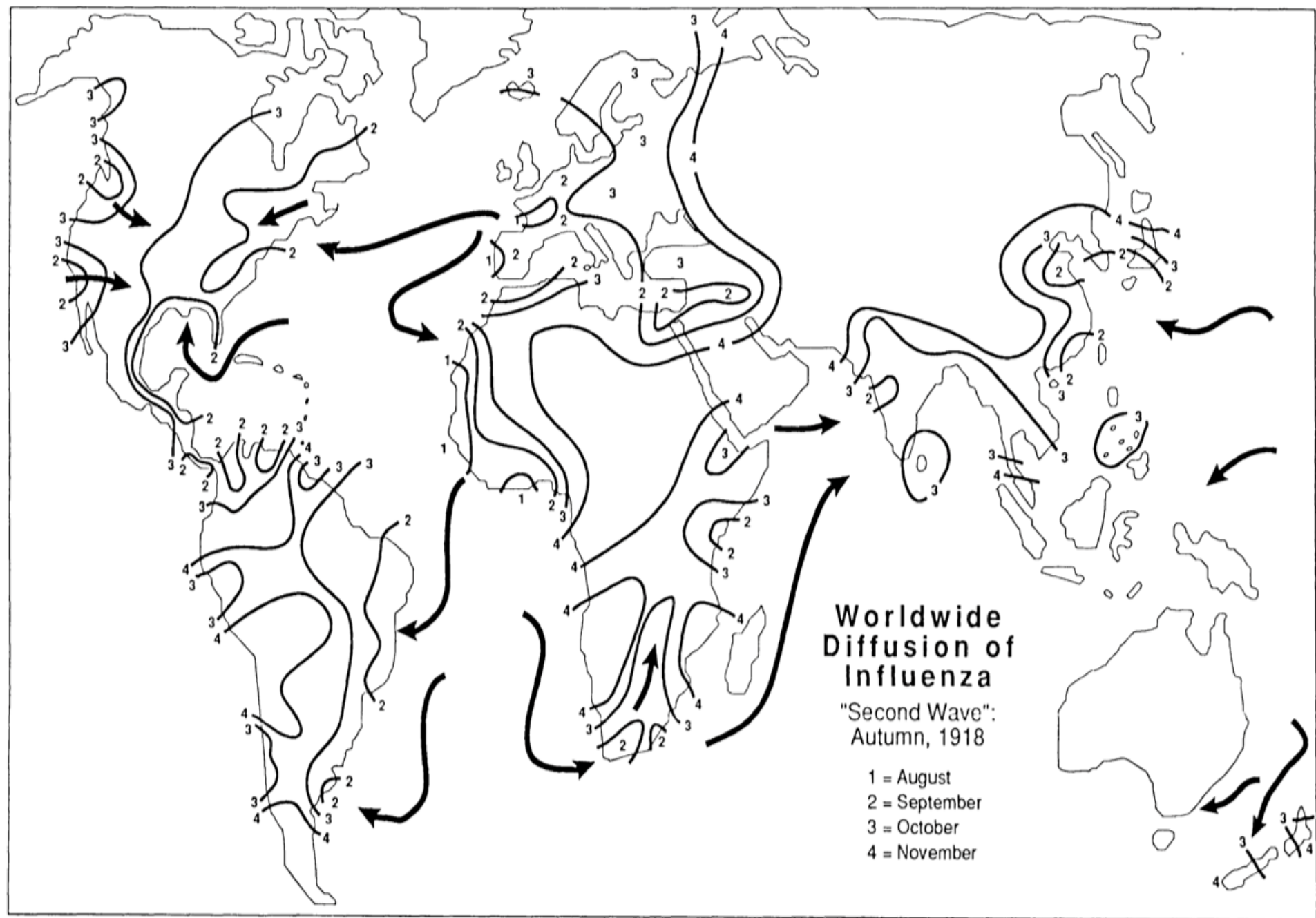

The 1918 Influenza pandemic in Fiji and Western Polynesia

Taken from “Setting a Barricade
Against the East Wind”

John Ryan McLane
johnryanmclane@gmail.com

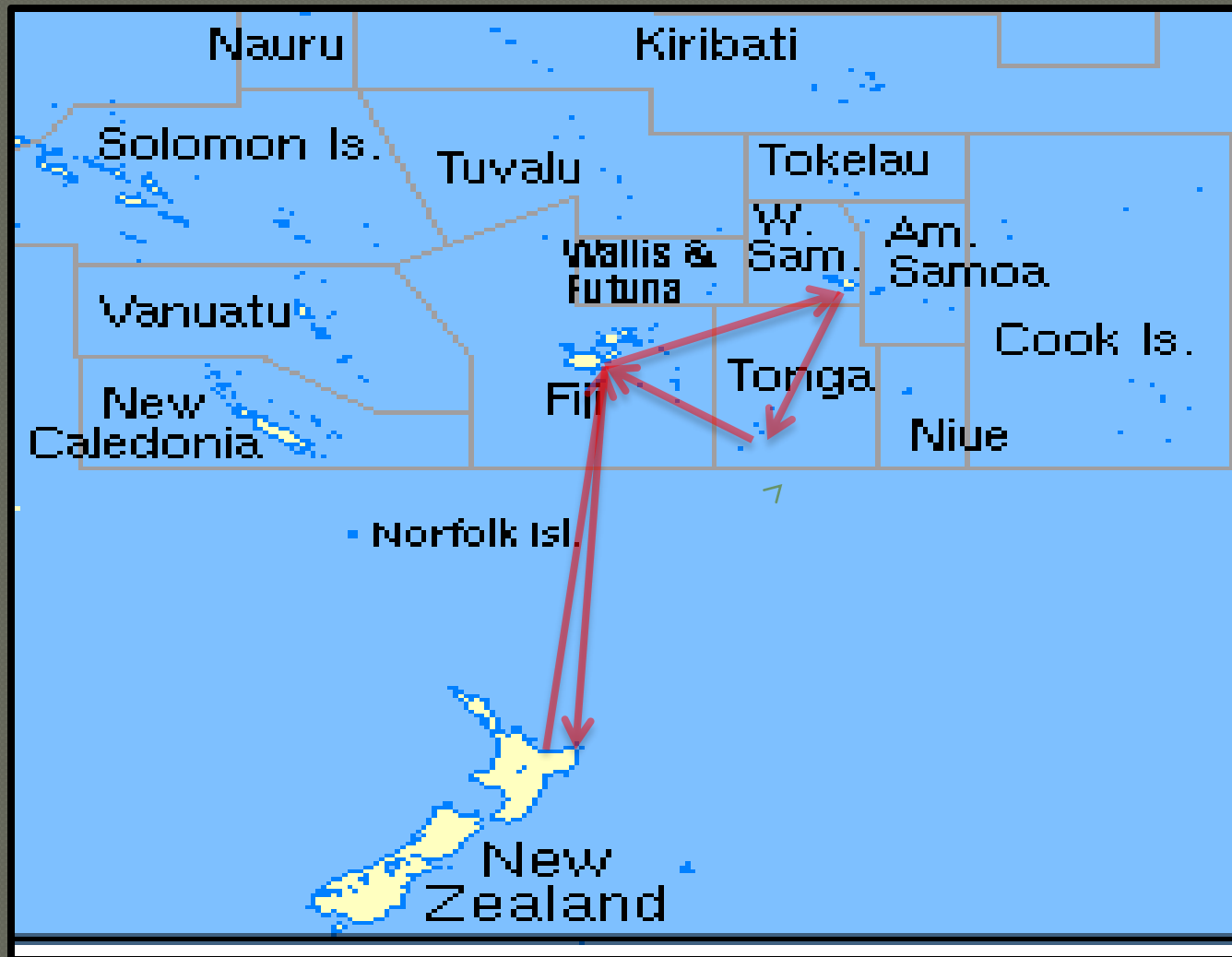


USS Talune



Course of USS Talune

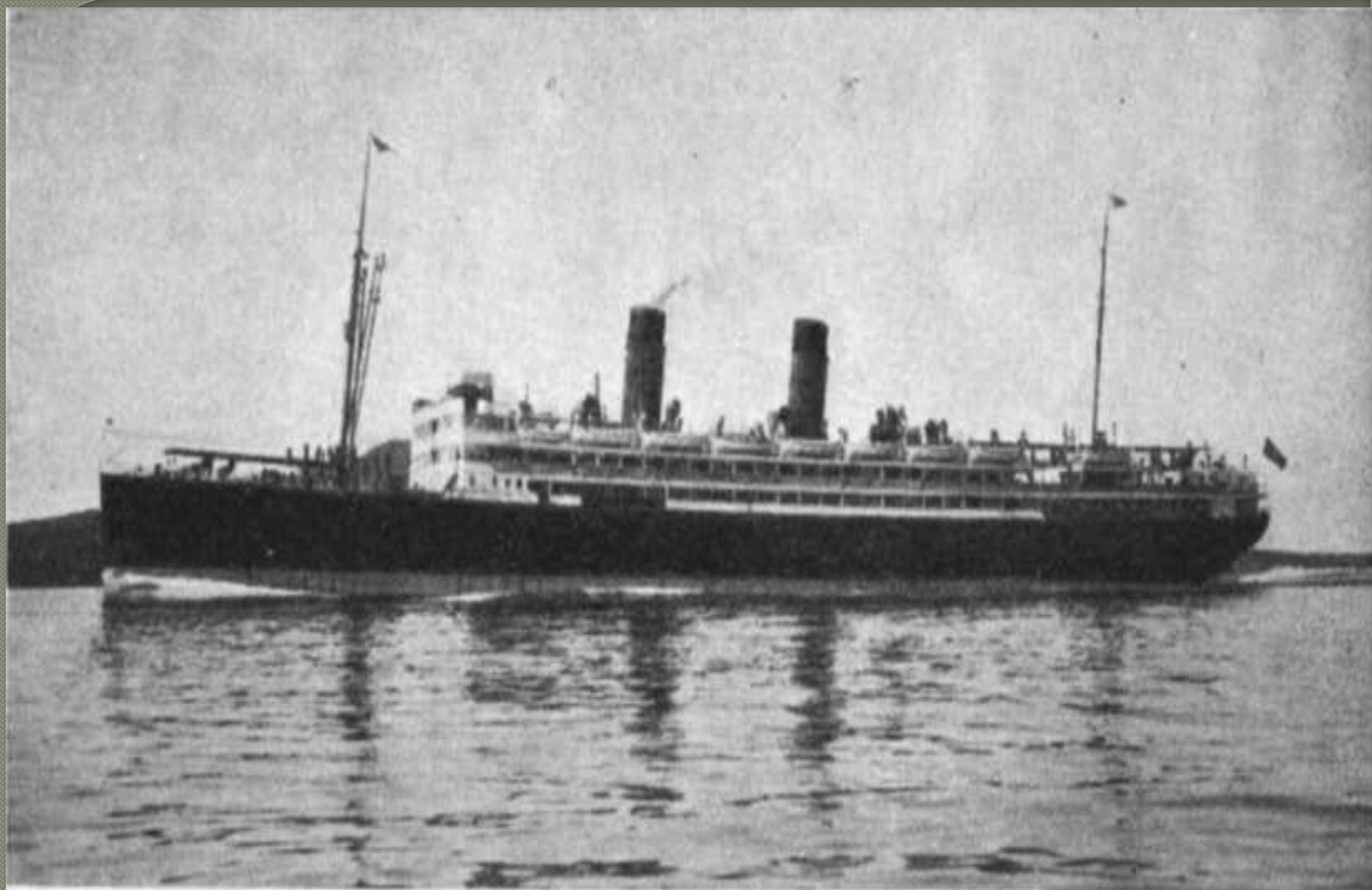
November, 1918





Fiji Governor C. Hunter Rodwell





(Photo., courtesy Union Steamship Coy.).
The R.M.S. "Niagara."

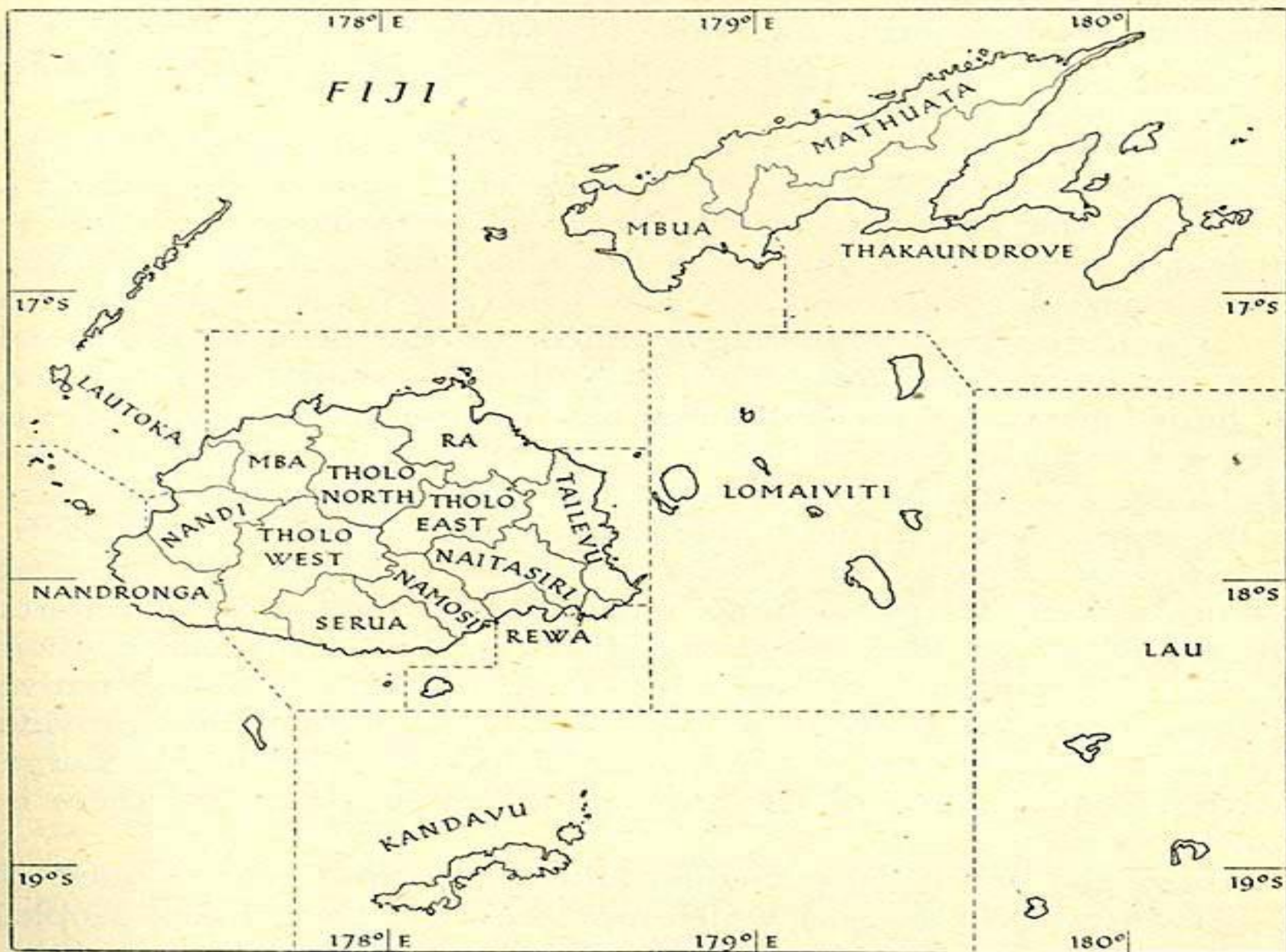
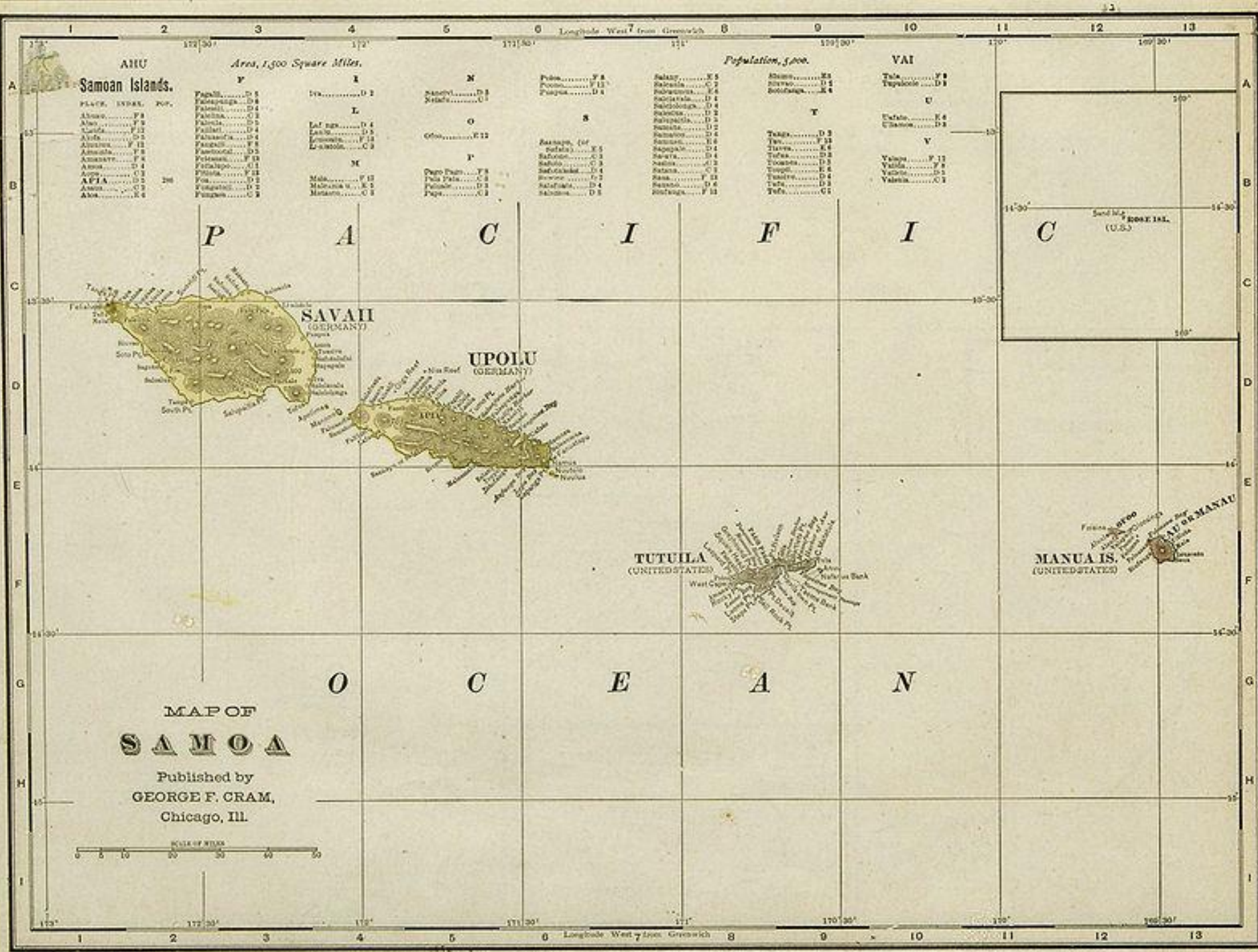


Fig. 53. Fiji: provinces
Based on G.S.G.S. map no. 4295 (Cassini's projection).



SOUTH PACIFIC OCEAN

To Swains Island
200mi
320km

To Hawaii
2600mi
4700km

To U.S. mainland
4800mi
7700km



A M E R I C A N S A M O A

United States Territory
Samoa (formerly Western Samoa)

TUTUILA

'Aunu'u Island
Pago Pago

Ofu Olosega
Ta'ū
MANU'A
ISLANDS

To Tahiti
1500mi
2400km

Rose
Atoll

To Australia
2500mi
4000km

To Fiji
800mi
1200km

To New Zealand
1800mi
2800km

INTERNATIONAL DATE
LINE

North



0
0

100 Kilometers

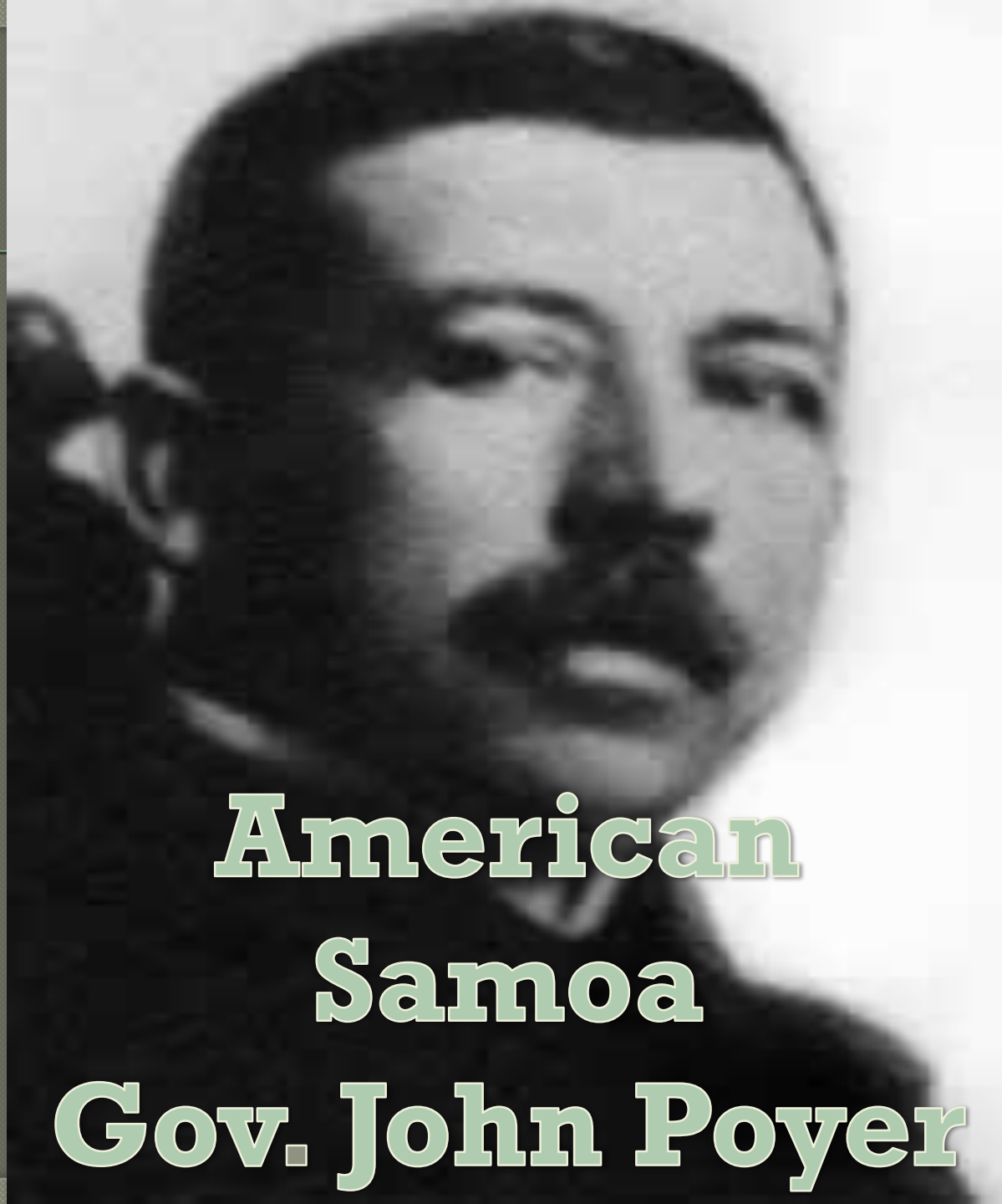
100 Miles

Pago Pago Harbor



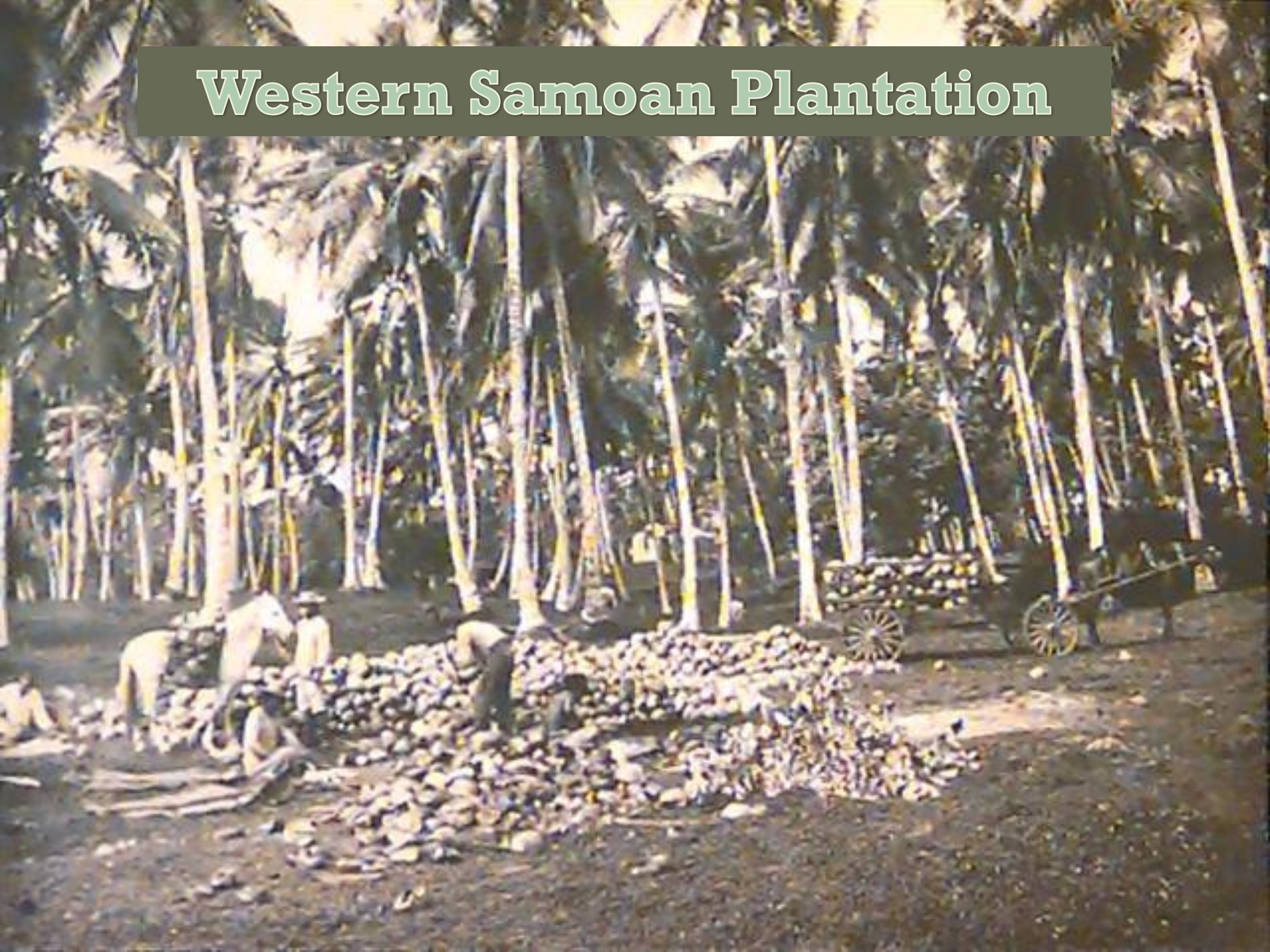
Occupation of Apia, 1914

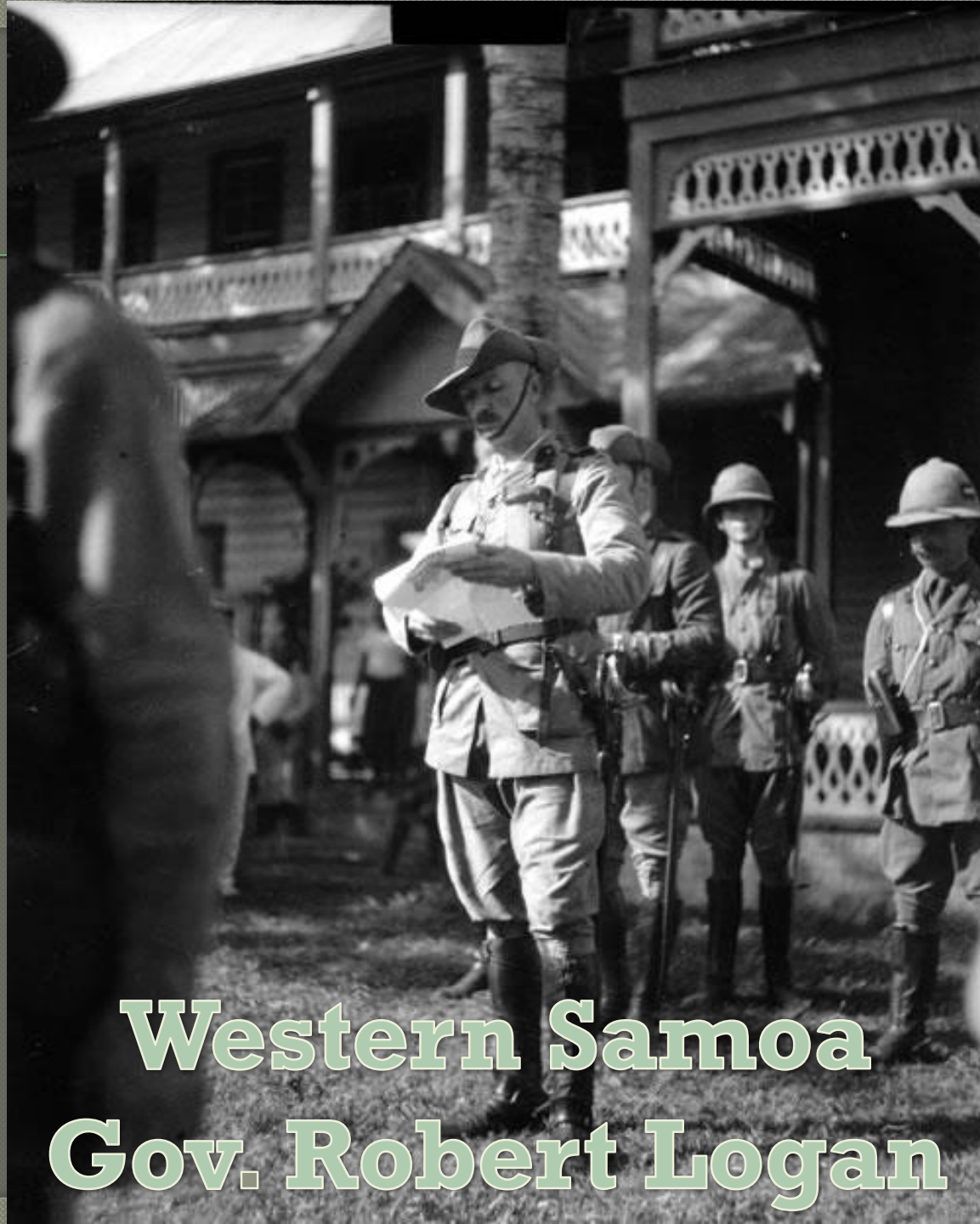




**American
Samoa
Gov. John Poyer**

Western Samoan Plantation





Western Samoa
Gov. Robert Logan



Samoan Chiefs of Pago Pago

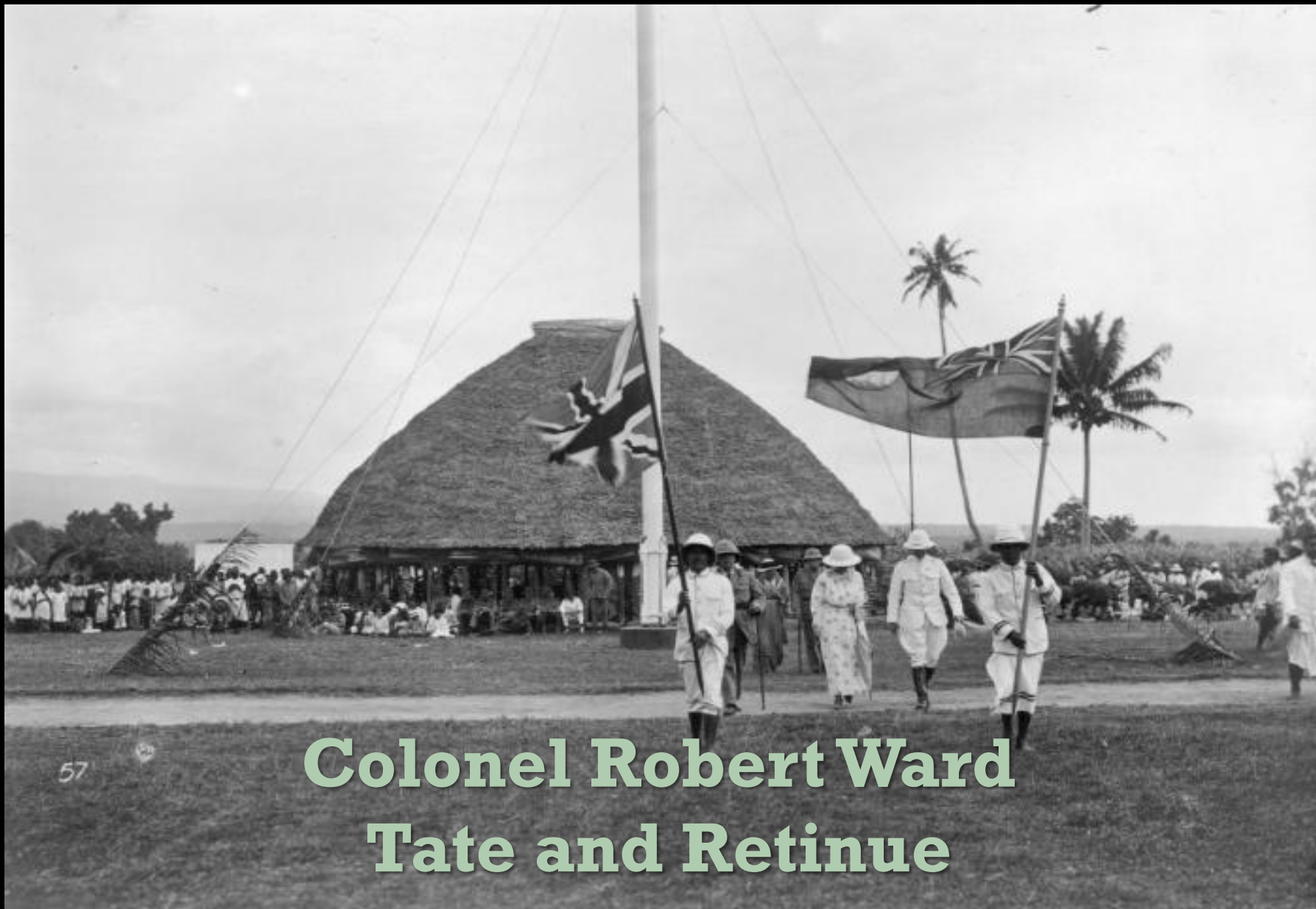
OBITUARY.

DAVID.—On 25th November at Safune, Savaii, Josephine, the dearly loved wife of Felix David and daughter of the late August Nelson Senr., aged 37 years.

NELSON.—On 24th November at the residence of her son, Sina, the beloved mother of O. F. Nelson and widow of the late August Nelson, seur., aged 59 years.

NELSON.—On 27th November at Palauli, Savaii, August, beloved and only brother of O. F. Nelson, aged 29 years.

NELSON.—On 30th November, at the residence of her father, Jane, widow of the late August Nelson, junr., and beloved daughter of S. H. Meredith, aged 19 years.



**Colonel Robert Ward
Tate and Retinue**



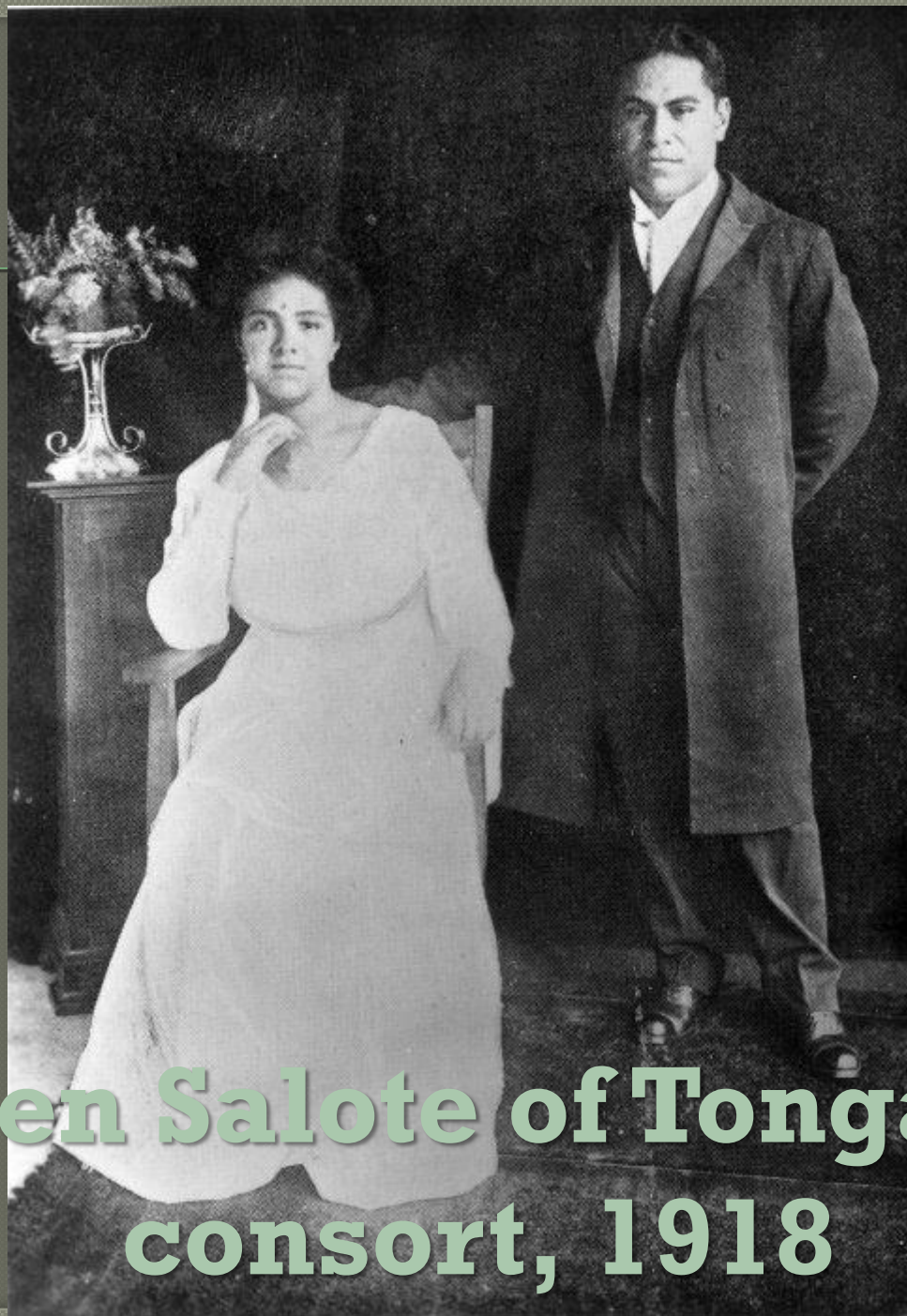
Tupua Tamasese Lealofi III, 1929



**The funeral of
Tupua Tamasese Lealofi III**







**Queen Salote of Tonga and
consort, 1918**

TONGA

To The Niuas (220km)
(see inset)

Fonualei

Toku

Vava'u
Group

Vava'u
● Neiafu

Late

Vava'u's Southern Islands

Ha'apai
Group

Tofua

● The Lifuka Group
Pangai

TONGA

Nomuka

Hunga
Tonga

Western Tongatapu

Eastern Tongatapu

Nuku'alofa

Tongatapu
Group

'Eua

'Ata

Tonga
Trench

Vityaz Deep
(-10,882m)

Minerva Reef

0 100 km
0 60 miles

● Niuafo'ou

The Niuas

Tafahi

Nuatoputapu



SOUTH
PACIFIC
OCEAN

SOUTH
PACIFIC
OCEAN



Tongan Royal Palace, 1918

Nuku'alofa Riots, 2006



Summary

- Pandemics are not merely medical events
- The course of the 1918 outbreaks in each state were determined by political, economic, historic, cultural, demographic, and geographic factors
- Key factors will vary between locales
- Preparation for outbreaks must occur holistically, medical planning alone is insufficient.