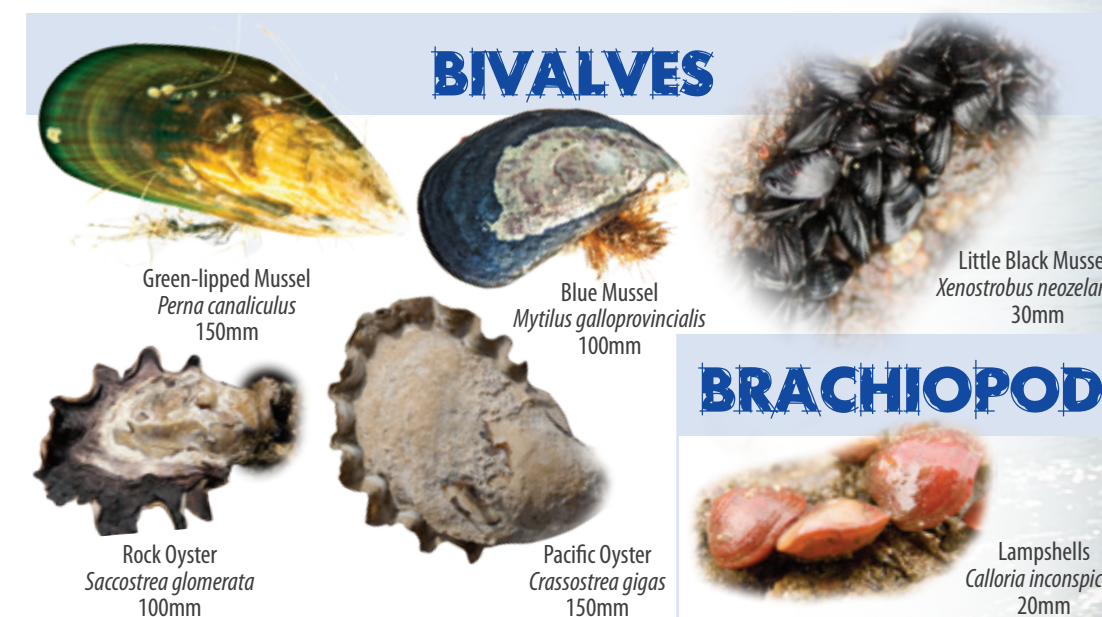
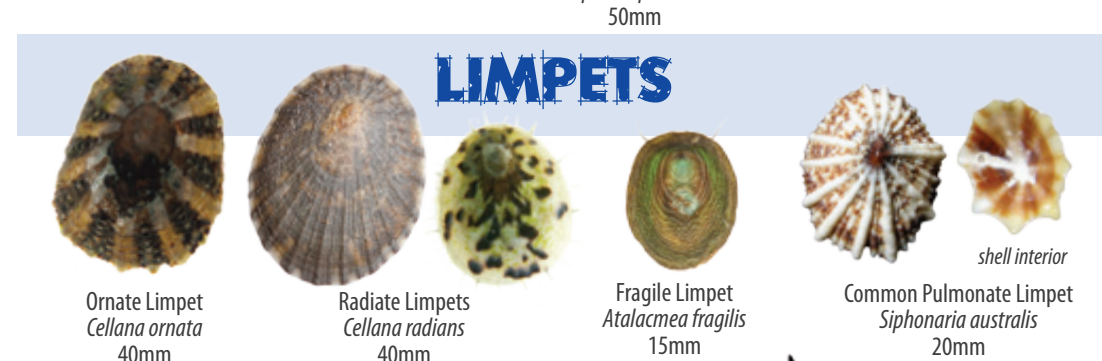
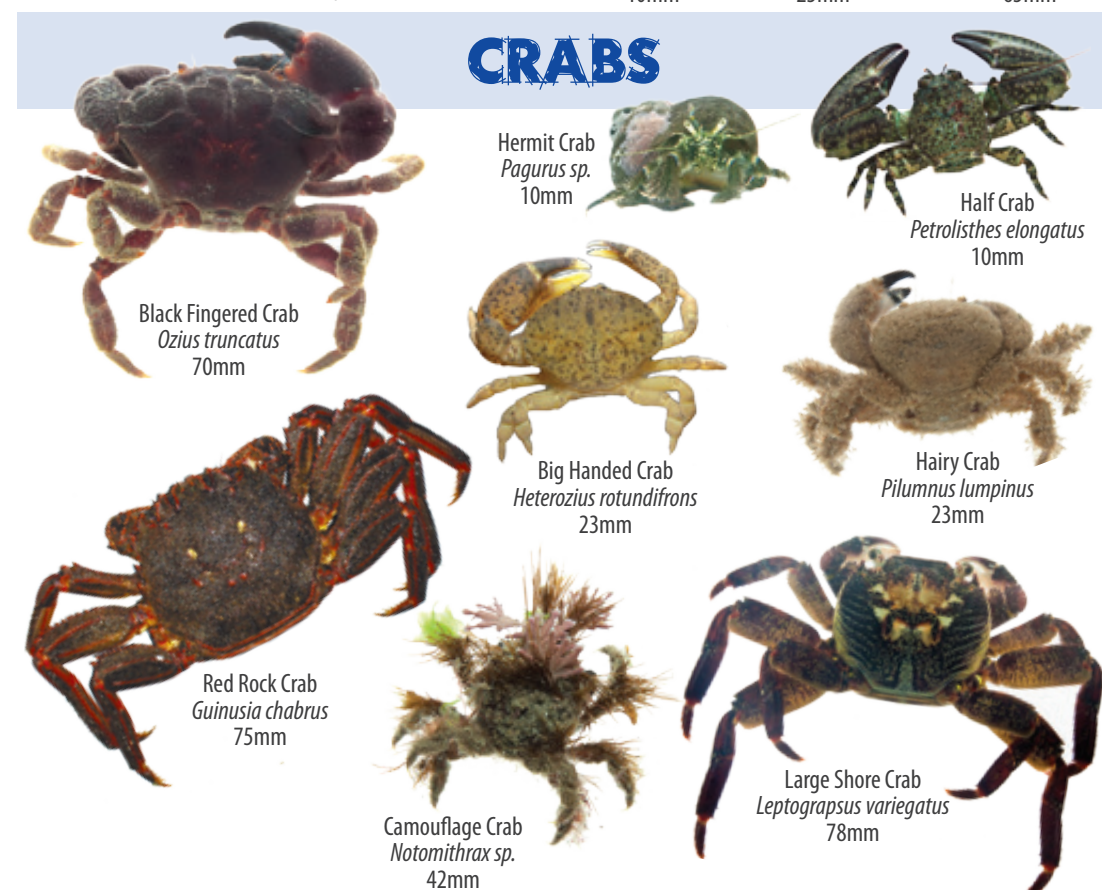


# Northern NZ ROCKY SHORE GUIDE



## SHOW RESPECT FOR SEASHORE CREATURES



- ✧ Tread carefully.
- ✧ Leave creatures where you found them.
- ✧ Leave attached seaweed in place.
- ✧ Handle creatures with care - close to the ground with wet hands.
- ✧ Carefully put rocks back to the same position you found them.
- ✧ Limit your collection of empty shells as other creatures use them as homes.

## AVOID DISTURBING WILDLIFE



- ☹ Keep your distance from seabirds including penguins.
- ☹ Keep your distance from seals and sea lions.
- ☹ Use the zoom on your camera or binoculars for close viewing.
- ☹ If sea lions approach you - back away slowly.
- ☹ Keep dogs under control.

## BE CAREFUL AND KEEP SAFE



- ☹ Check tide times to avoid being cut off by rising tide.
- ☹ Do not explore the seashore alone.
- ☹ Watch for changing weather.
- ☹ Look out for waves - never turn your back to the ocean.
- ☹ Beware of slippery and uneven rock surfaces.
- ☹ Pick up any rubbish found on the shore and dispose of it appropriately.

A handy guide to the common  
animals and plants living  
on the rocky seashores of  
northern New Zealand.

This guide illustrates only some of  
the more common seashore animals  
and plants. Visit our website for a  
comprehensive list, Māori names and  
information about their ecology.