



Dunedin's *Energy Plan 1.0*: Partnerships and Challenges

Keynote address to the

Otago Energy Research Symposium, 11 November 2016

Cr Chris Staynes, Deputy Mayor, Dunedin City Council

A city-wide, action-based plan

'Energy Plan 1.0' sits under the *Economic Development Strategy*



Take advantage of economic opportunities in a changing energy context



Save cost and enhance quality of life through improved energy efficiency



Boost City's energy security and ability to adapt to change



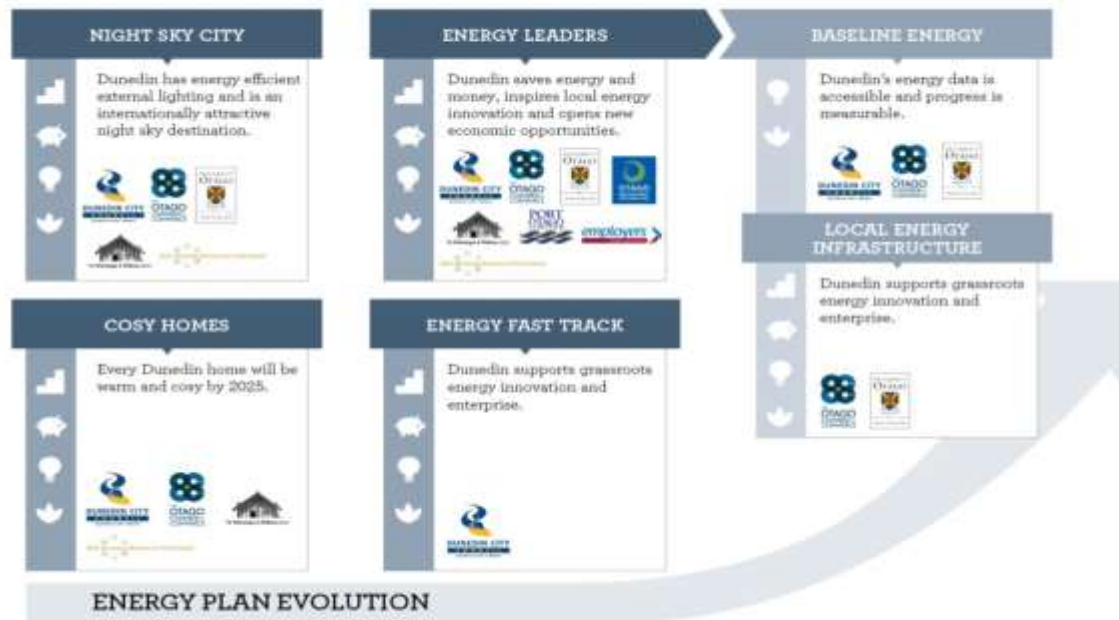
Reduce Dunedin's contribution to climate change



Goals well supported, but a challenge to determine actions

Initial actions

- Energy Leaders
- Energy Fast-track
- Night-sky City
- Cosy Homes
- Baseline Energy
- Dunedin EV
- Biomass
- Food Resilience



Partnerships critical to successful delivery

Energy Leaders

A formal partnership of academia, major users, energy experts



Facilitating and inspiring action, with partnership at the core

Night-Sky City

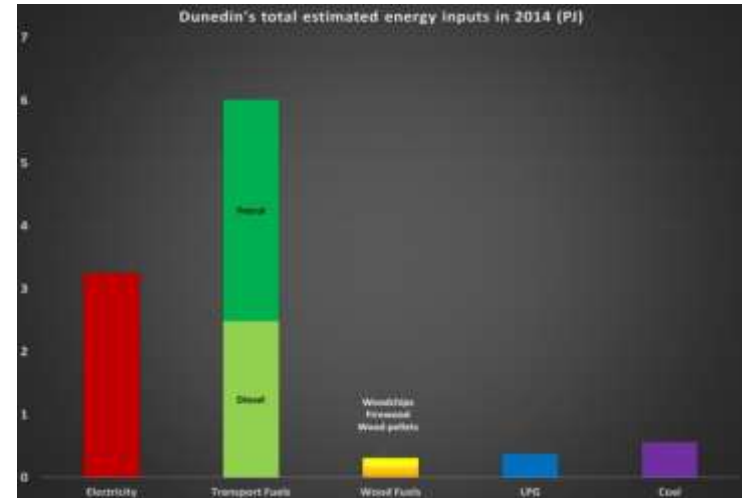
Smart, efficient and healthy lighting preserving the night sky



Dark-sky advocates are now influencing the city's development

Baseline Energy

City-wide energy study by the Centre for Sustainability



Better understanding the dominance of transport fuels helped drive a new Energy Plan action

Dun: EV



Few EVs on Dunedin's roads at the start ... now EV sales are growing strongly and new charge-points are emerging

Challenges



Partnerships



"Our research suggests that many small and medium businesses don't see energy as a major cost. Yet we've also unearthed some businesses that have made major energy savings. Steve McNulty of Classic Jaguar Limousines in Dunedin is a superb example. Doing 8,000 kilometres of business a month makes every fuel saving action count, from fitting older cars with bigger wheels and electric fans, to purchasing new aluminium bodied vehicles. Steve started with a sustainability focus, but his bankers can't believe the financial gains he's achieved. Steve is applying the same approach to every facet of his award-winning business, and is inspiring his suppliers to make changes that ultimately benefit all of their customers. That type of leadership is helping to make Dunedin's economy stronger."

DR SARA WALTON | SENIOR LECTURER, OTAGO BUSINESS SCHOOL, UNIVERSITY OF OTAGO

Dr Sara Walton and Steven McNulty | Owner, Classic Jaguar Limousines

"Our research suggests that many small and medium businesses don't see energy as a major cost. Yet we've also unearthed some businesses that have made major energy savings."

Steve started with a sustainability focus, but his bankers can't believe the financial savings he's achieved."

Dr Sarah Walton



Contact us: energyplan@dcc.govt.nz