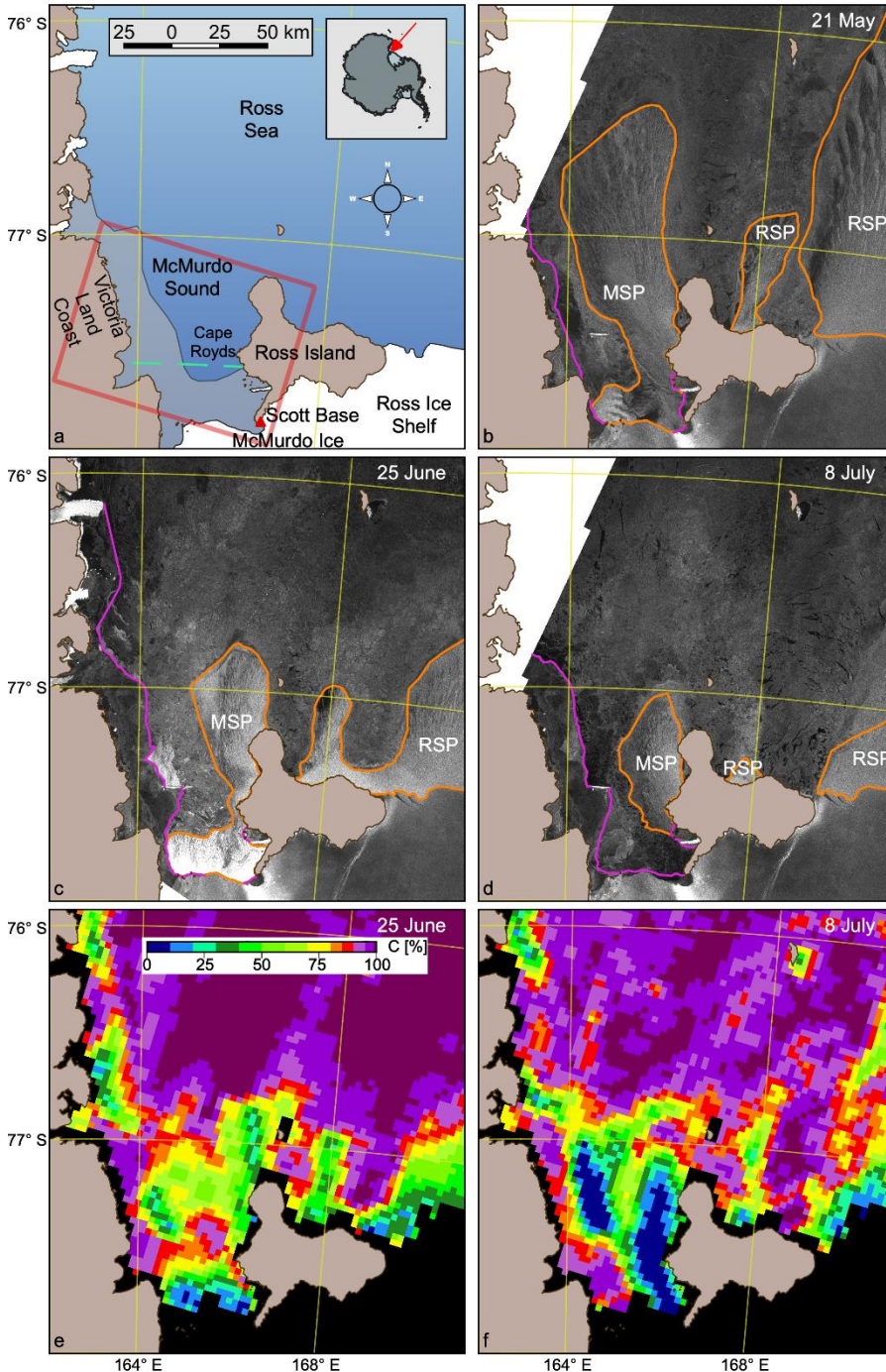


# Te Kura Kairūri School of Surveying Lunchtime Seminar Series

## The Anomalous Winter 2019 Sea-ice Conditions in McMurdo Sound, Antarctica



### Authors:

Greg Leonard, Kate Turner, Maren Richter, Maddy Whitaker, Inga Smith

### Presenter:

Greg Leonard

McMurdo Sound sea ice can generally be partitioned into two regimes: (1) a stable fast-ice cover, forming south of approximately  $77.6^{\circ}$  S around March–April and then breaking out the following January–February, and (2) a more dynamic region north of  $77.6^{\circ}$  S that the McMurdo Sound and Ross Sea polynyas regularly impact. In 2019, a stable fast-ice cover formed unusually late due to repeated break-out events. We analyse the 2019 sea-ice conditions and relate them to a modified storm index (MSI), a proxy for southerly wind events. We find there is a strong correlation between the timing of break-out events and several unusually large MSI events.

Thursday 10 March 2022 (12:00pm – 12:50pm)

L1 Lecture Theatre | School of Surveying, 310 Castle Street

OR Join remotely: <https://zoom.us/join> (ID: 329 427 2033, P/W: 310310)