

*diversity*

# TANGATA TIRITI



*Co-design*



**Te Puni Kōkiri**  
MINISTRY OF MĀORI DEVELOPMENT

BETTINA REID



**KO WAI AU...**

# TPK TAI TOKERAU HOUSING REPAIRS

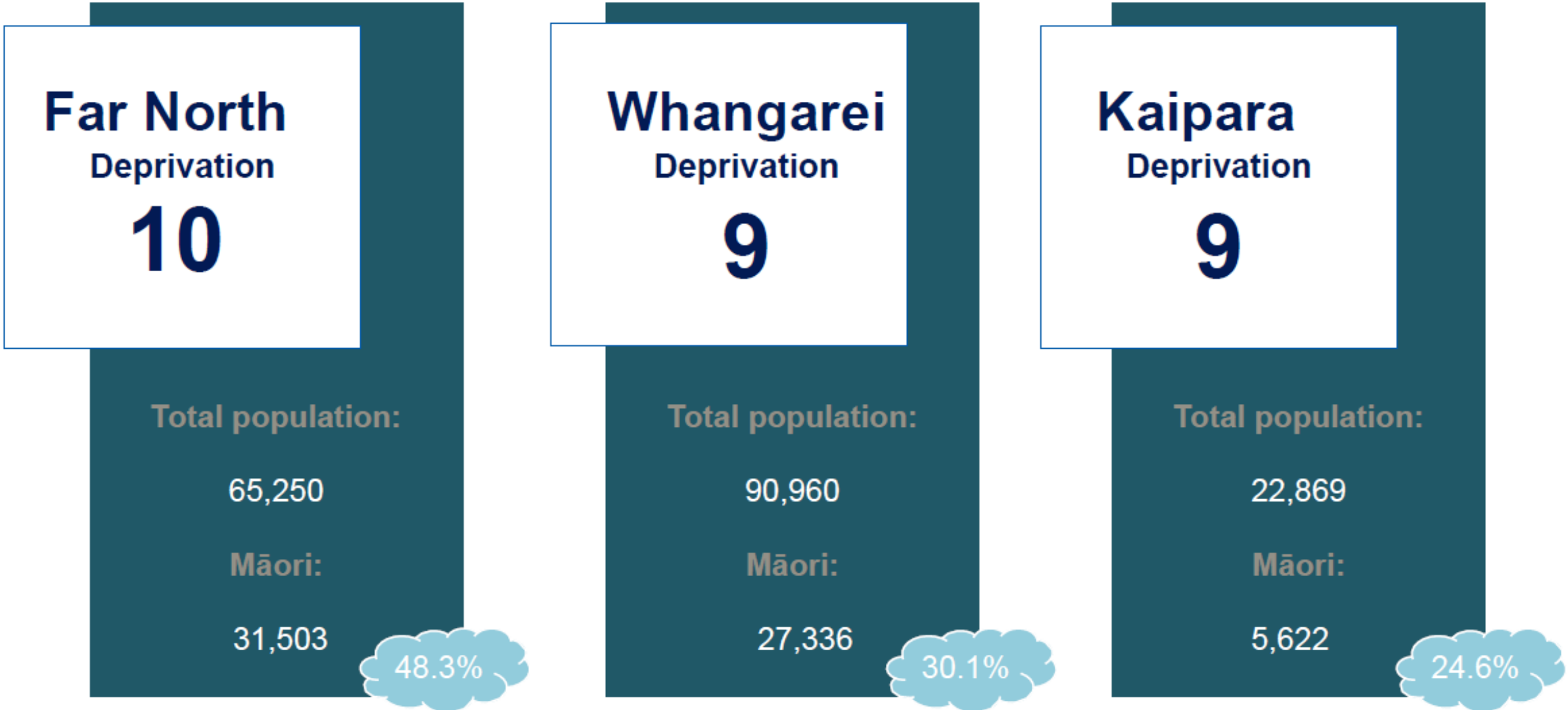
LOCATION	SCOPE	DEMOGRAPHIC
<b>WHENUA MAORI / ISOLATED RUARAL COMMUNITIES</b> To be eligible there must be some form of tenure. LTO/ Occupation order, permission from whanau.	<b>SCOPE OF REPAIRS</b> In 2021 our scope of repairs changed. It moved from critical repairs to anything that would effect the health and safety of whanau.	<b>KAUMATUA / KUIA, TAMARIKI, VULNERABLE PERSONS</b> Whanau that have the above demographic dwelling in whare

**In October 2021 Te Tai Tokerau regional office received \$3,000,000 in repairs funds to allocate to providers.  
Since January 2021 our regional office has received 750 enquiries with 90% of relating to repairs.**

**\$3,000,000 = 2 % OF NEED**

# TAI TOKERAU DEPRIVATION INDEXES

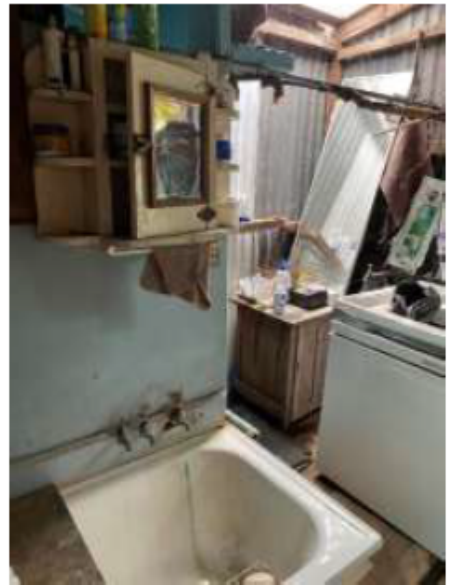
## Deprivation and Demographics



Deprivation index is based on 9 census measures.

- While not measuring energy poverty it references beneficiaries, families living in overcrowding and without access to internet and vehicles.

# WHAT DEP 10 LOOKS LIKE





---

*what is a*  
**TANGĀTA TIRITI**

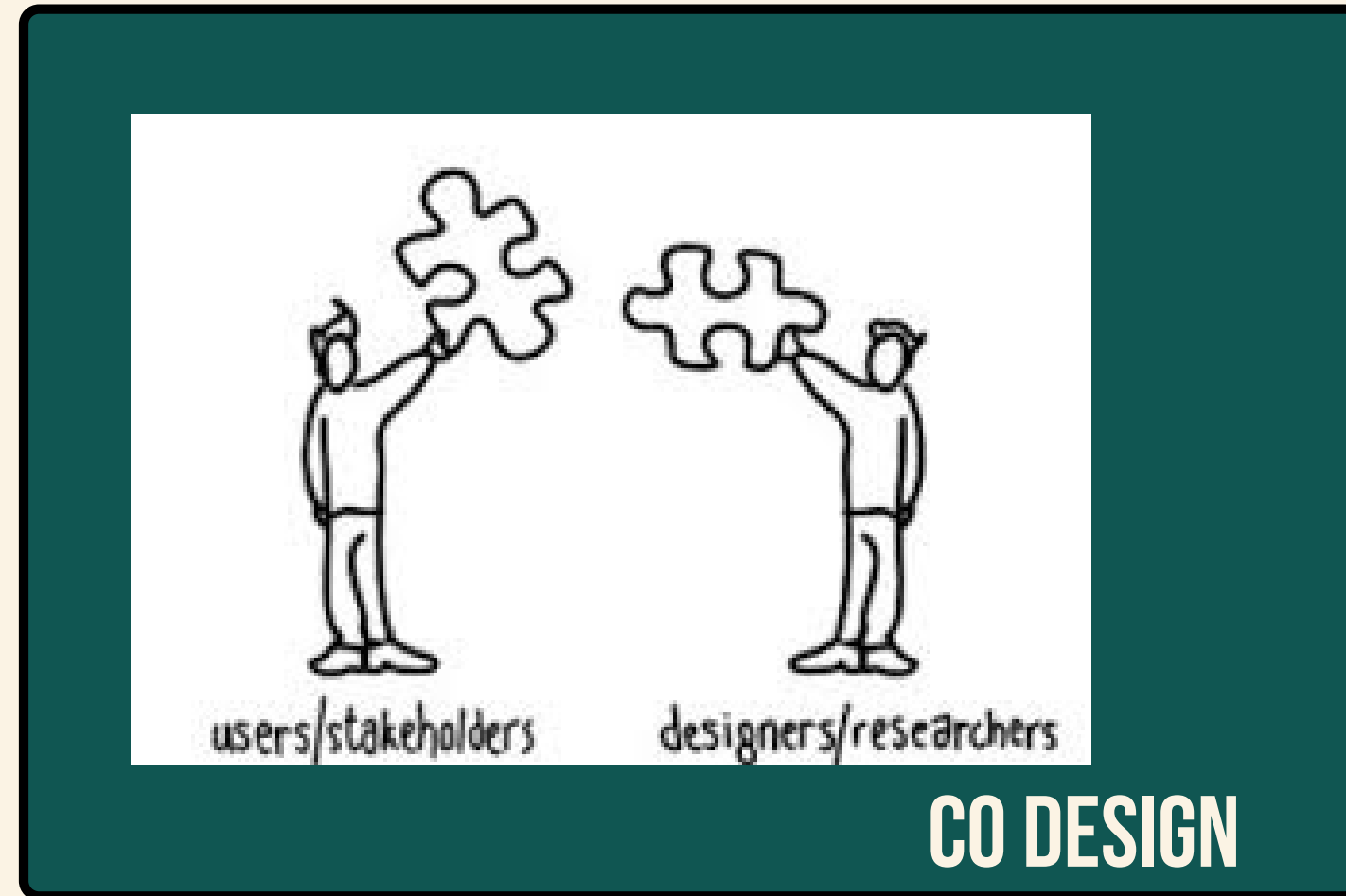
People who don't whakapapa to a Māori ancestor, that reside in NZ and/or are NZ citizens.

Pakeha/Tauīwi that understand the history of NZ and Te Tiriti and that support Māori to actualise their Tino Rangatiratanga.

---

# TUHONO

*The intrinsic bond*



# HOW CAN WE ALL DO BETTER

*These three concepts are all closely linked together they are symbiotic*



**TANGATA TIRITI**



**DIVERSITY**

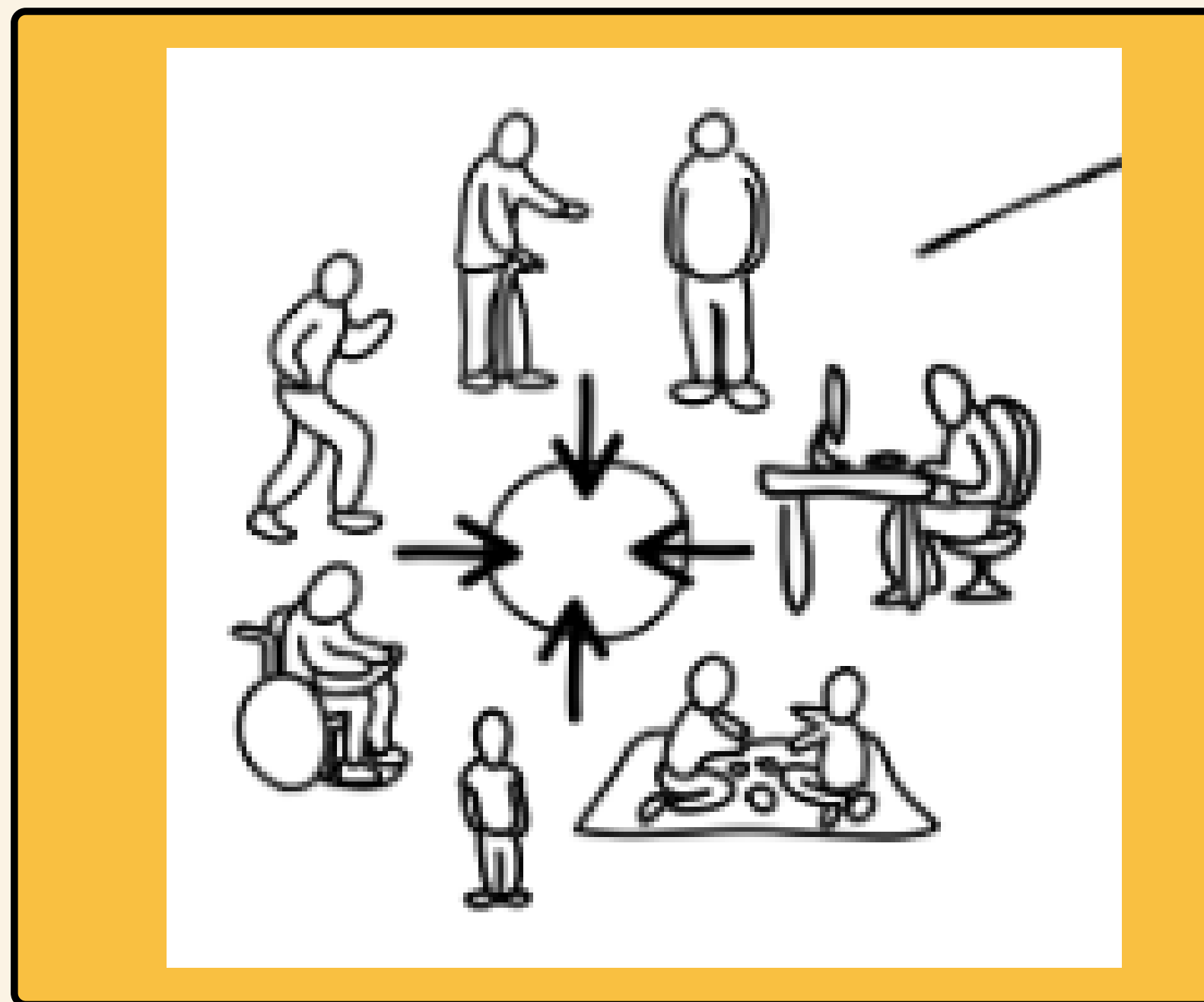
needs

# DIVERSITY

Diversity should not a tick box exercise to ensure you are practicing your ***tangāta tiriti best self***.

It should be integral to the entire process. With clear engagement and process, in achieving this.

The diversity box will not need to be a tick box it will be happening with co-design in real time.





# CO-DESIGNING

## ***In partnership with Maori***

Designing parameters that seem straight forward to us can sometimes **'miss the mark'**.

Even if the policy, operations, research or solutions we are designing are based on:

- Data
- Need
- Desire to contribute.

**Without partnership the end goal doesn't work because we miss people out**



There are some great resources available online, at an agency and rungana level in how this can work successfully and contribute to system change.

# EXAMPLE OF HOW WHANAU NEEDS COULD HAVE BEEN BETTER CONSIDERED

## HEAT PUMP

Approximation of whanau payment to be between \$400-\$700.

CONCERN OVER POWER BILL

## POTBELLY/WOOD BURNER

Approximation of whanau payment to be between \$1000-\$3000.

JUSTIFICATIONS

- Free fuel – able to sustainably harvest manuka
- No power cost
- Stove for cooking – large periods of no power due to remote locations and power cuts
- Wetback – free water heating
- Able to dry clothes if needed for uniforms

Choose type of heating

What type of heating would you like? ⓘ

Heat pump

Expect the amount you need to pay to be between \$400-\$700. This will depend on the size and brand of heat pump. Heat pumps provide instant heat and temperature control with the thermostat, and have low running costs if used properly. Your unit will be sized to heat the room it's installed in, not the whole house.

Wood burner

Expect the amount you need to pay to be between \$1000-\$3000. The price will depend on the type of wood burner - some regions require ultra-low emission burners, which are more expensive than low emission burners. Wood burners require dry firewood stored in a sheltered space, ideally for at least 12 months, and have low running costs, even if you need to buy firewood.

**Without partnership the end goal  
doesn't work because we miss people  
out !**