

# The Lost Kelp Forest

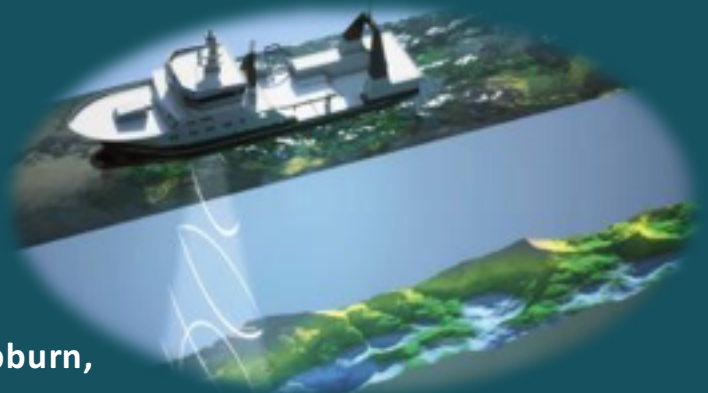
## Mapping the spatial distribution of *Macrocystis pyrifera* along coastal southern Otago

Has there been a change in abundance and distribution of *Macrocystis pyrifera* along the Southern Otago coastline? If so, why?

How will we find this out?

- Interviewing local users of the coast about the historic extent of *Macrocystis pyrifera*
- Multi beam surveys of the coastal environment
- Ground truthing the habitat through dive surveys

*Macrocystis pyrifera* is one of the largest and fastest growing marine algae . It provides habitat in temperate coastal systems. The giant algae provides refuge for many invertebrates and fish species as well as playing an important role in larval settlement



**Madeline Glover**  
MSc Candidate  
Supervisors: **Matt Desmond, Chris Hepburn, Emily Tidey, and Anne-Marie Jackson**