

# Appendix 23

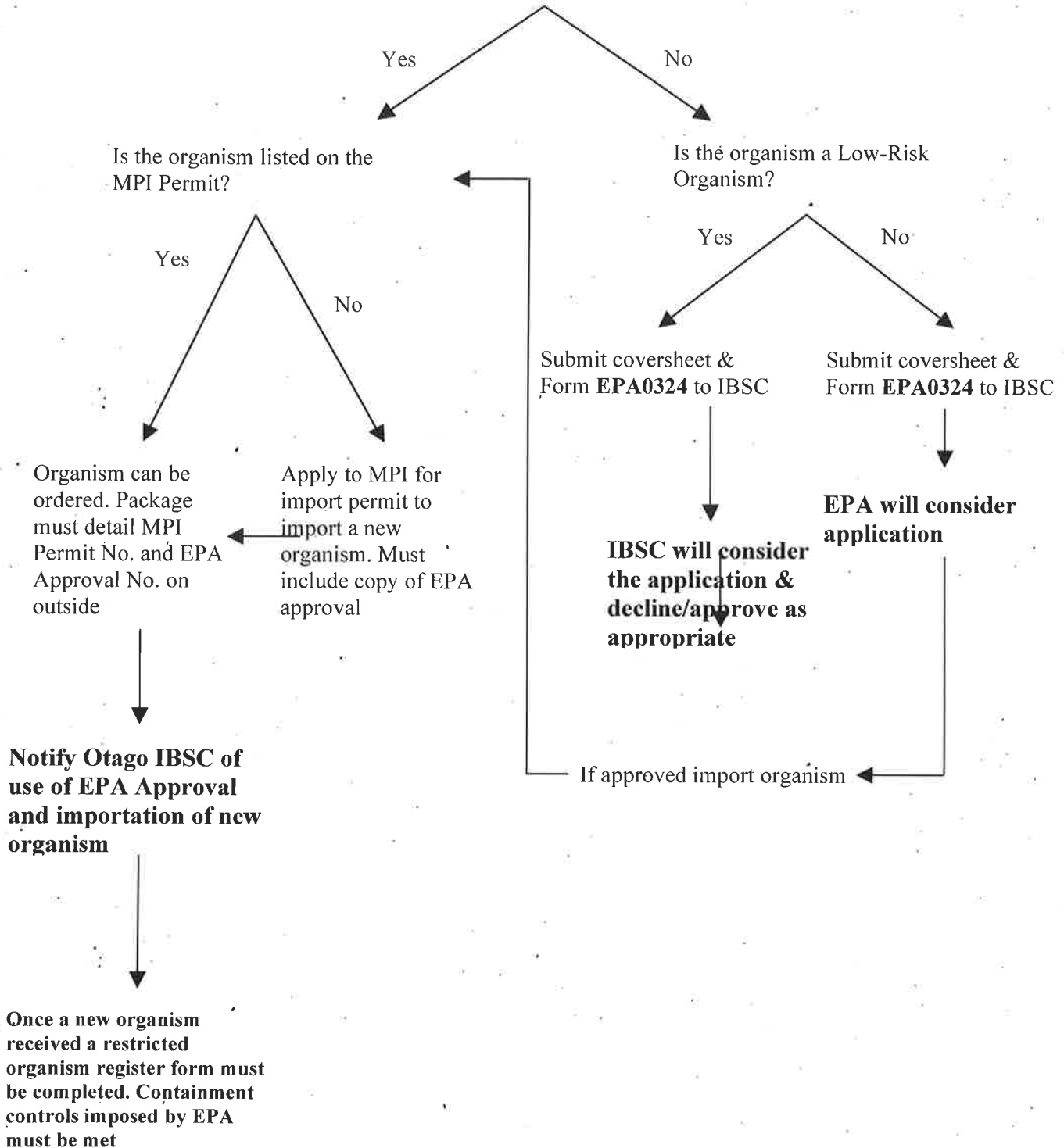
## EPA Procedures – Flow Charts



# IMPORTATION OF NEW ORGANISMS/CELL CULTURES INTO CONTAINMENT

Is it covered by an existing University of Otago Import Approval?

*Note: If importation is of plasmid DNA in isolation then only MPI Permit required.*



## DEVELOPMENT OF NEW ORGANISMS IN CONTAINMENT

**Note: The application is to develop a particular organism or group of organisms. It is not an overall approval to carry out a project of experiment where the organisms being developed are not defined.**

