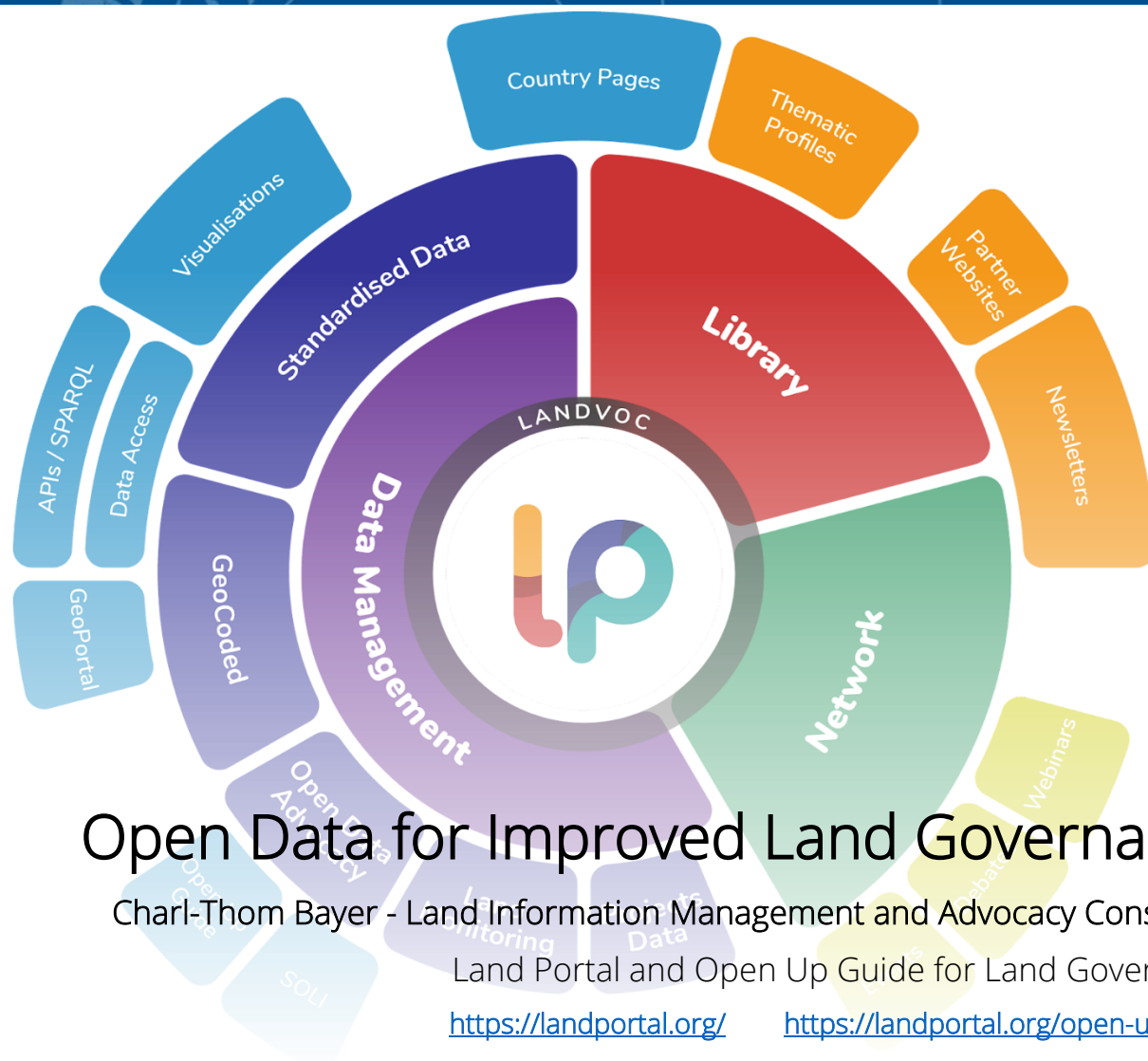


Te Kura Kairūri School of Surveying Lunchtime Seminar Series



Open Data for Improved Land Governance

Charl-Thom Bayer - Land Information Management and Advocacy Consultant

Land Portal and Open Up Guide for Land Governance

<https://landportal.org/>

<https://landportal.org/open-up-guide>

Globally very little land governance data is available as structured open data. Open data critics often cite issues of privacy, data quality, and lack of authoritativeness as impediments for opening up data. However, these are data management issues that should be considered at all times, irrespective of whether the data is open or closed. Open and transparent land data and information supports more efficient service provision and informed policy making in support of sustainable development. The Land Portal Foundation through the Open Up Guide for Land Governance is making an important contribution towards uncovering land governance data and assessing the openness of land data at country level. It sets a benchmark for improvement and facilitates the identification of technical and institutional challenges. The outcomes are improved data management practices in support of informed decision making for land governance.



Thursday 22nd September 2022 (12pm – 1pm)

L1 Lecture Theatre | School of Surveying, 310 Castle Street

OR Join remotely: <https://zoom.us/join> (ID: 329 427 2033, P/W: 310310)