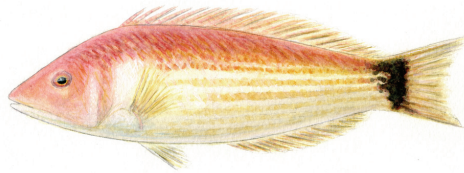


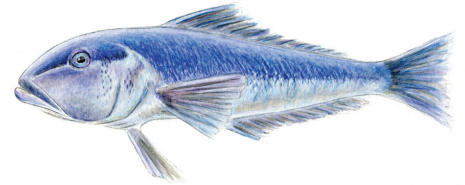
New Zealand Marine Studies Centre Tank Guide



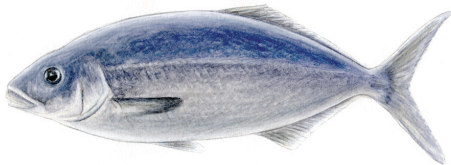
Spotty
Notolabrus celidotus
Pākirikiri



Scarlet Wrasse
Pseudolabrus miles
Pūwaiwhakarua



Blue Cod
Parapercis colias
Rāwaru



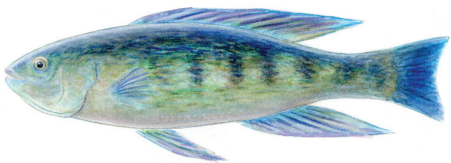
Blue Moki
Latridopsis ciliaris
Moki



Crested Bellowsfish
Notopogon lillie



Carpet Shark
Cephaloscyllium isabella
Pekapeka



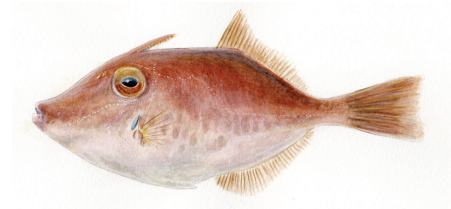
Greenbone
Odax pullus
Maraī



Jock Stewart
Helicolenus percoides
Pōhuiakaroa



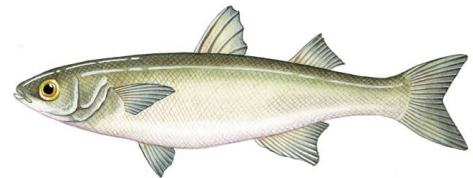
Trumpeter
Latris lineata
Kohikohi



Leatherjacket
Meuschenia scaber
Kokiri



Southern Pigfish
Congiopodus leucopaecilus
Puramorua



Yellow Eyed Mullet
Aldrichetta forsteri
Aua



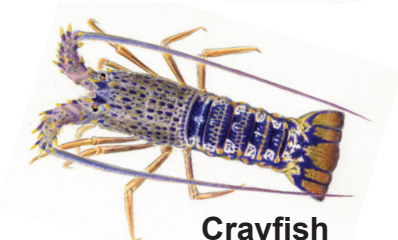
Seahorse
Hippocampus abdominalis
Manaia



Warehou
Seriolella punctata
Warehou



Tarakihi
Nemadactylus macropterus
Tarakihi



Crayfish
Jasus edwardsii
Kōura



Sea Urchin
Evechinus chloroticus
Kina



Octopus
Macroctopus maorum
Wheke

What can you find in our fish tanks?