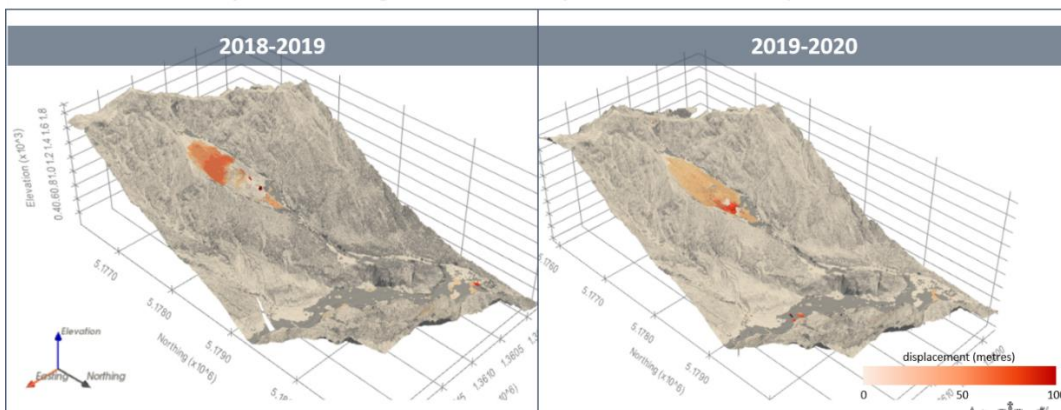


# Te Kura Kairūri School of Surveying Lunchtime Seminar Series

## What did our Summer Bursary students get up to this year?

Ellorine Carle | Resolving landscape dynamics in the Fox Glacier/Te Moeka o  
Tūawe catchment with remote sensing and 3-D change detection

Surface Displacement Magnitudes on the Alpine Garden Landslide, West Coast NZ



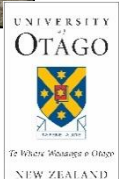
MINISTRY OF BUSINESS,  
INNOVATION & EMPLOYMENT  
HIKINA WHAKATUTUKI

[www.otago.ac.nz/surveying/potree/pub/mrc/projects/matariki](http://www.otago.ac.nz/surveying/potree/pub/mrc/projects/matariki)

Hugo Collins | The Tunnel Beach Project



Department of  
Conservation  
*Te Papa Atawhai*



Thursday 3<sup>rd</sup> March 2022 (12pm – 1pm)

L1 Lecture Theatre | School of Surveying, 310 Castle Street

OR Join remotely: <https://zoom.us/join> (ID: 329 427 2033, P/W: 310310)