

Housing Effects About Rheumatic Fever Study (HEART)

An Update

Ramona Tiatia, Yun Sung, Philippa Howden-Chapman,
Cheryl Davies, Dalice Sim, Bridget Robson, Michael Baker,
Deidre Brown

r.tiatia@otago.ac.nz



Acknowledgements



Well Homes | Healthy
Environments |



Primary School
Principals who make
a **Difference**



Porirua East Principals Cluster



Pacific Spirit Therapy Ltd



Tu Kotahi Maori Asthma Trust

HRC and MOH Brief

- Pathways to prevention for rheumatic fever
- To investigate functional and structural household crowding
- Two-year project *

* with hopefully a year extension

Aims

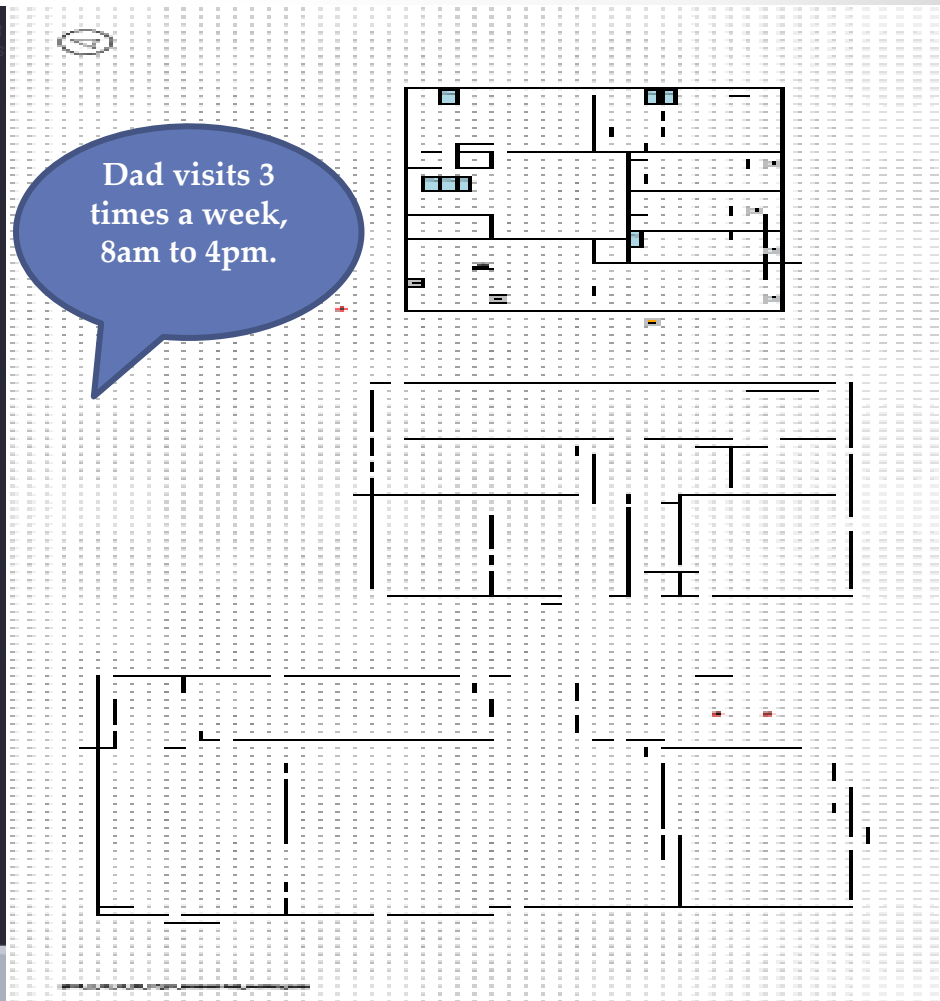
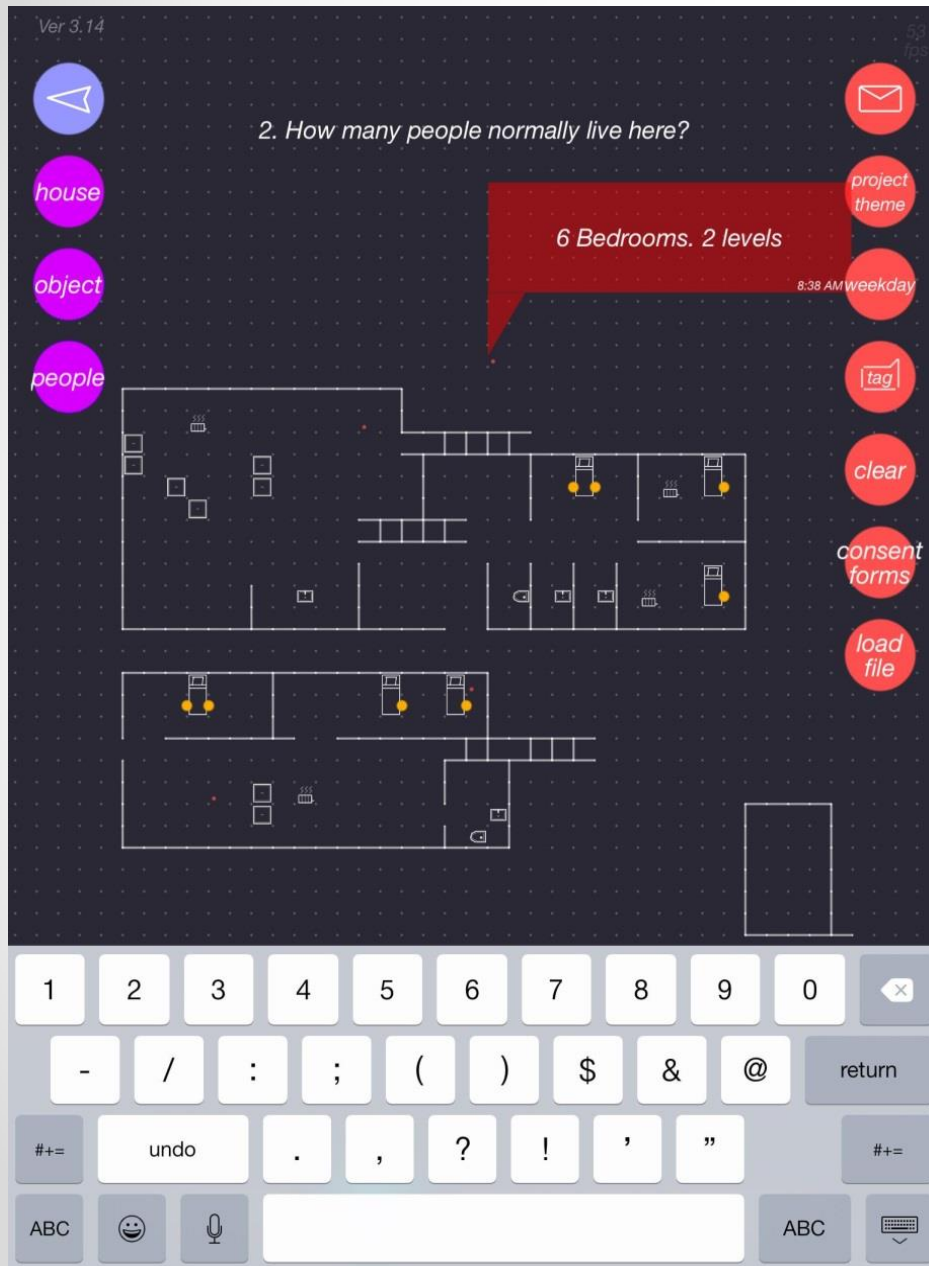
- To understand how families live in their houses and the strategies they use to manage day-to-day household activities: care of children; taking care of a family member who is unwell; & hosting family events
- To collect participants' perspectives about their indoor and outdoor environments
- Jointly identifying culturally appropriate ways to improve housing and reduce household crowding
- To collaborate with the Porirua Social Sector Trial (provided free heaters & house inspections)

Method

- 100 households recruited, 75 interviewed by local interviewers
- Setting: East Porirua primary/intermediate schools registered in MOH throat-swabbing programme
- Qualitative home interview for 60-90 mins & laser measurement of living areas
- Customised software application for iPad used to collect data
- Two-dimensional drawing to scale of index house & other houses
- Gathering information about housing conditions, including perceptions and independent crowding measures



Heart App – House Plans



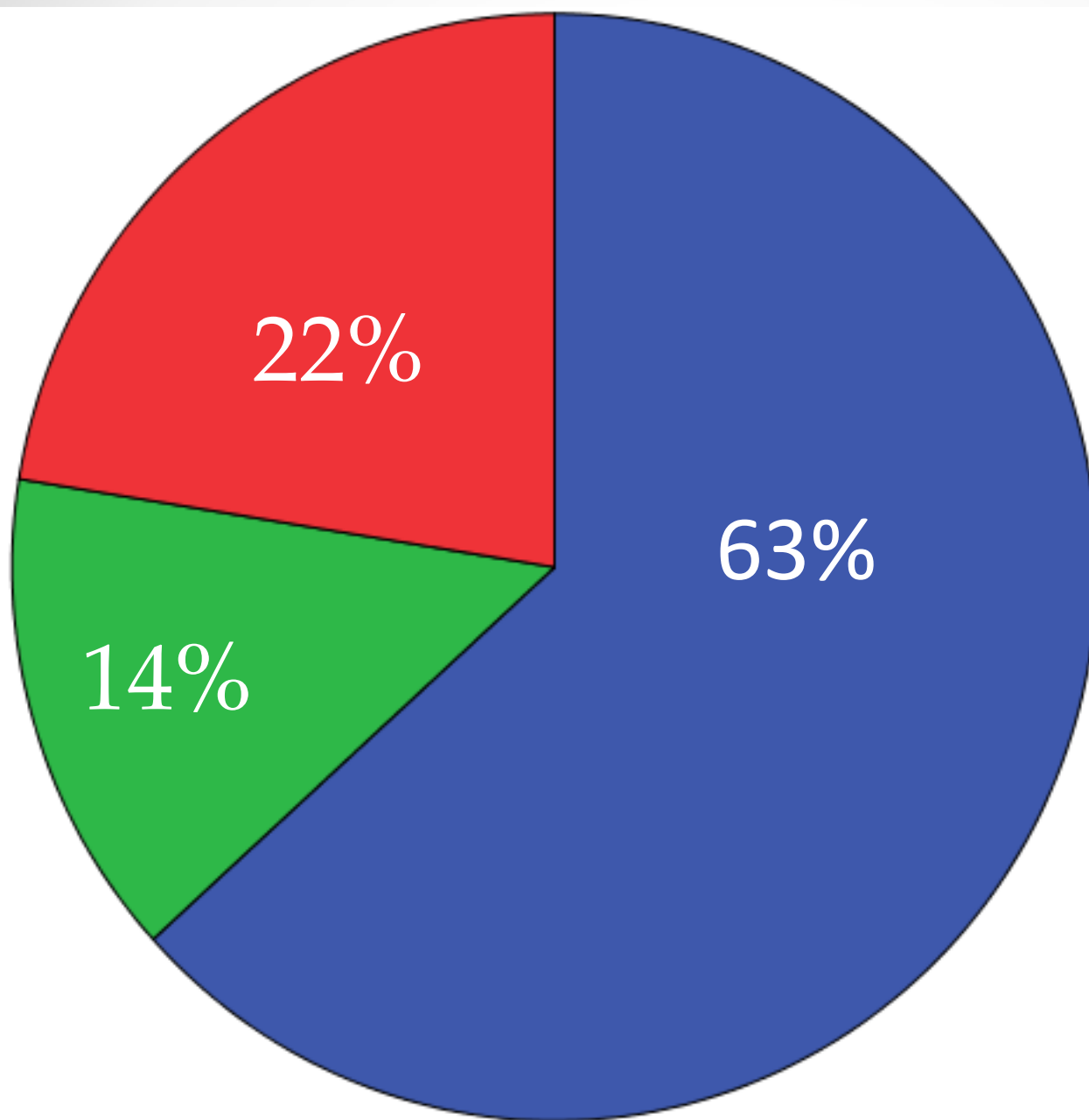
1. Index house
2. Previous house
3. Community Hall (recently used for 2 funerals)

Interim Results

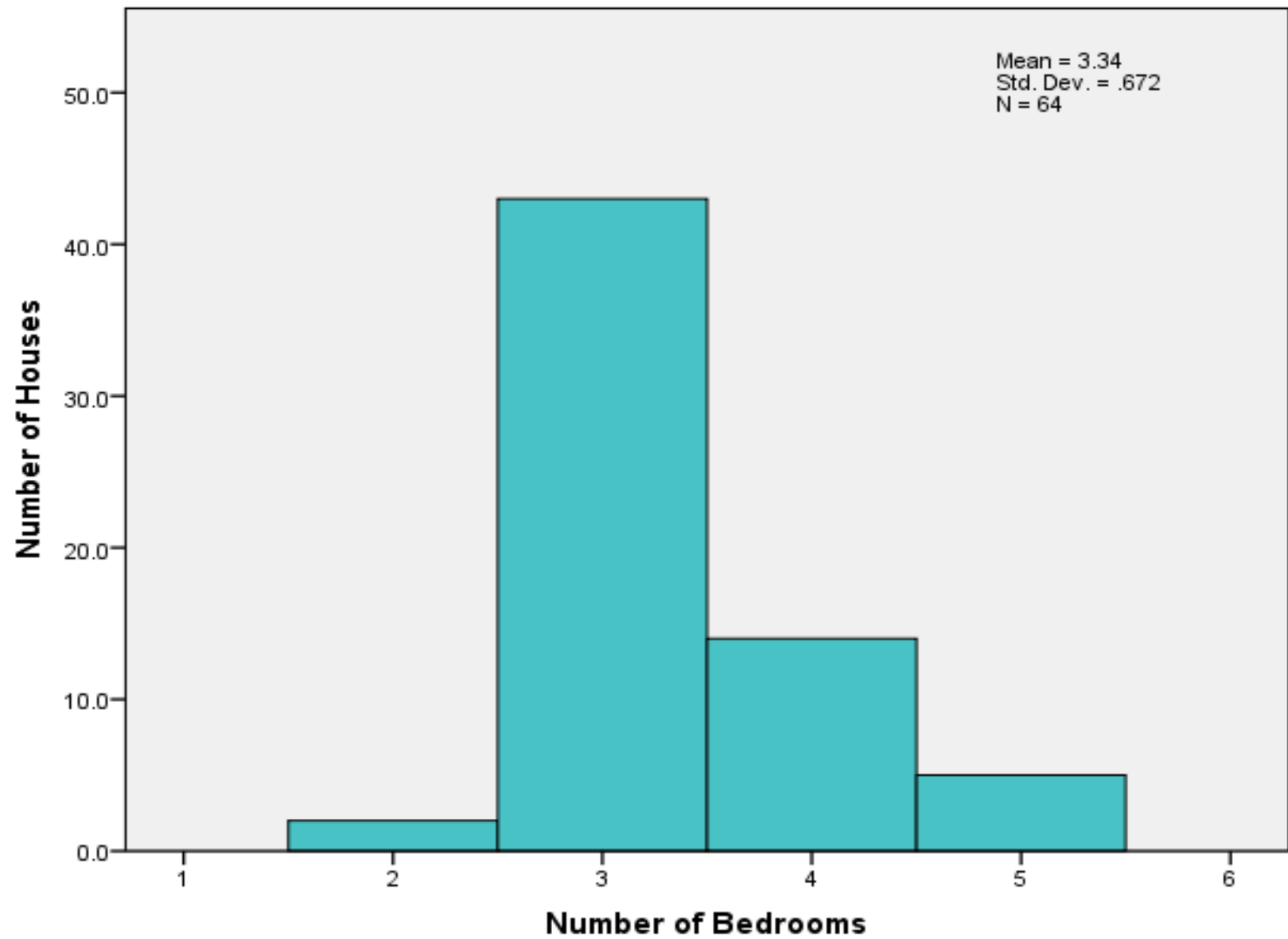
- Two-thirds living in state houses
- Houses have average of 3 bedrooms
- Av of 5 people in house, but up to 12 people
- Av of 3 children, but up to 8 children
- Av of 2 adults but up to 5 adults living there
- For events av of 5 people, but up to 23
- Households very dynamic across all ethnic groups

House Tenure

- hnzc
- owned
- private rental



Number of Bedrooms per House

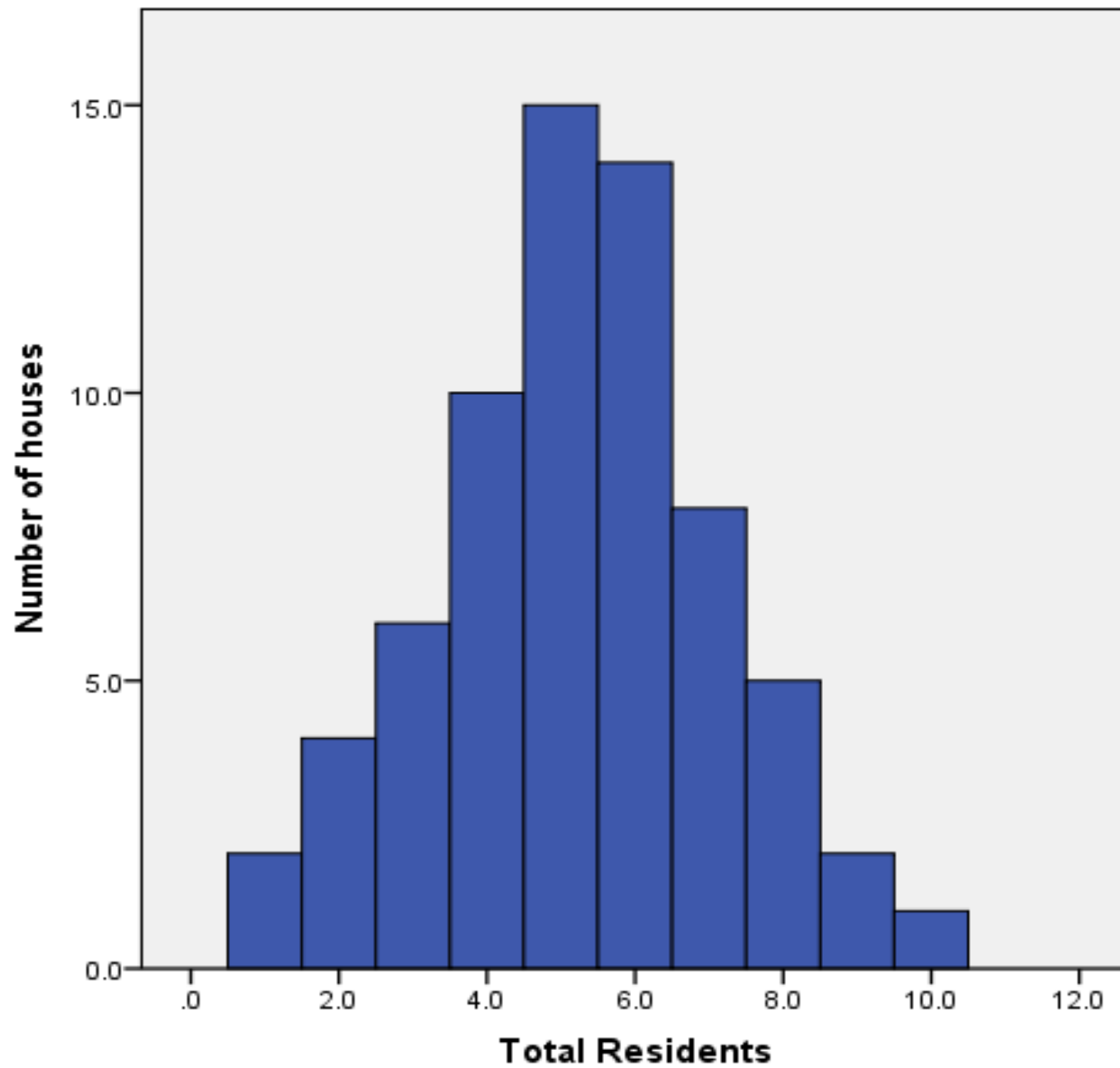




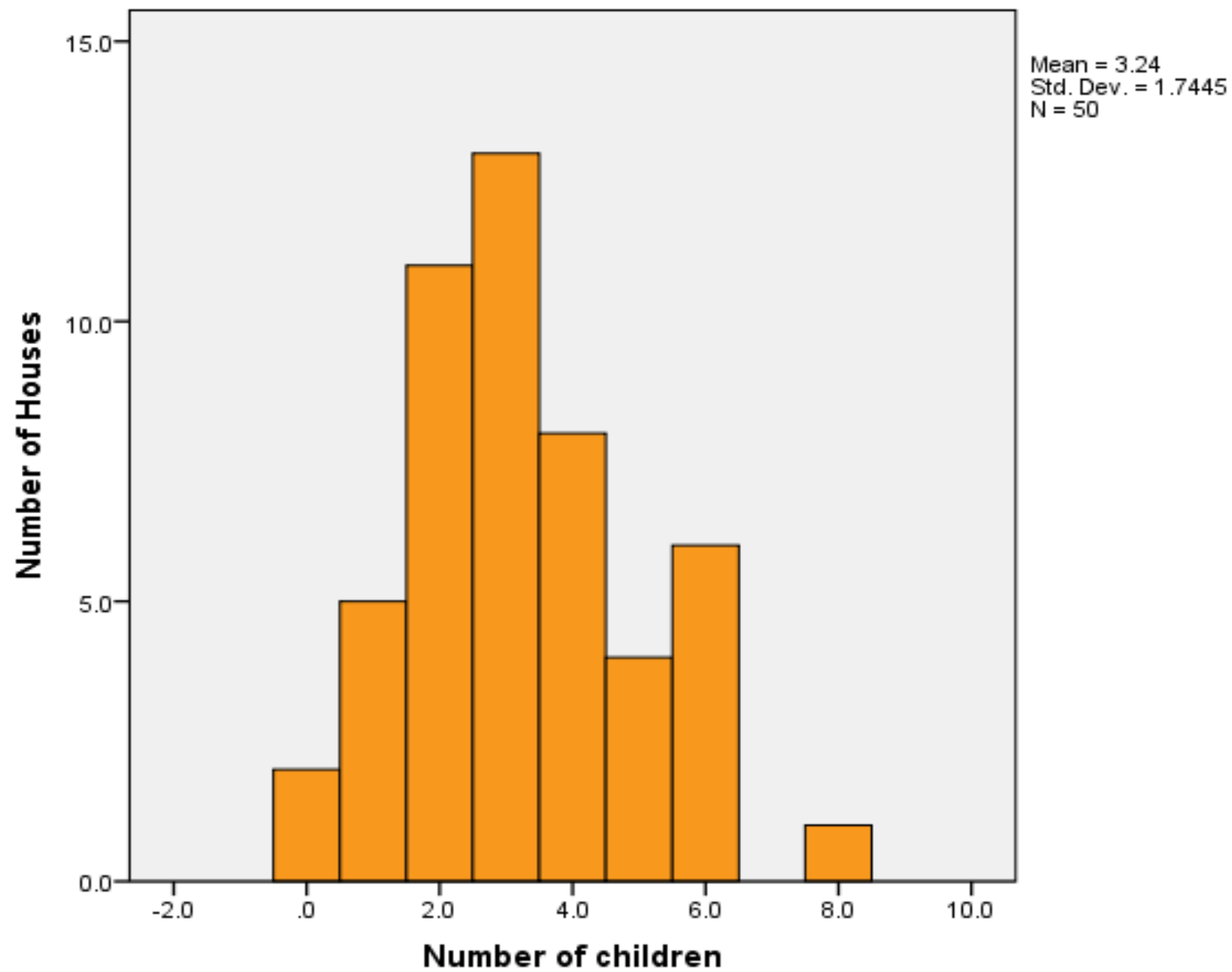
HNZ community designed extended-family house

Total People Residing per house

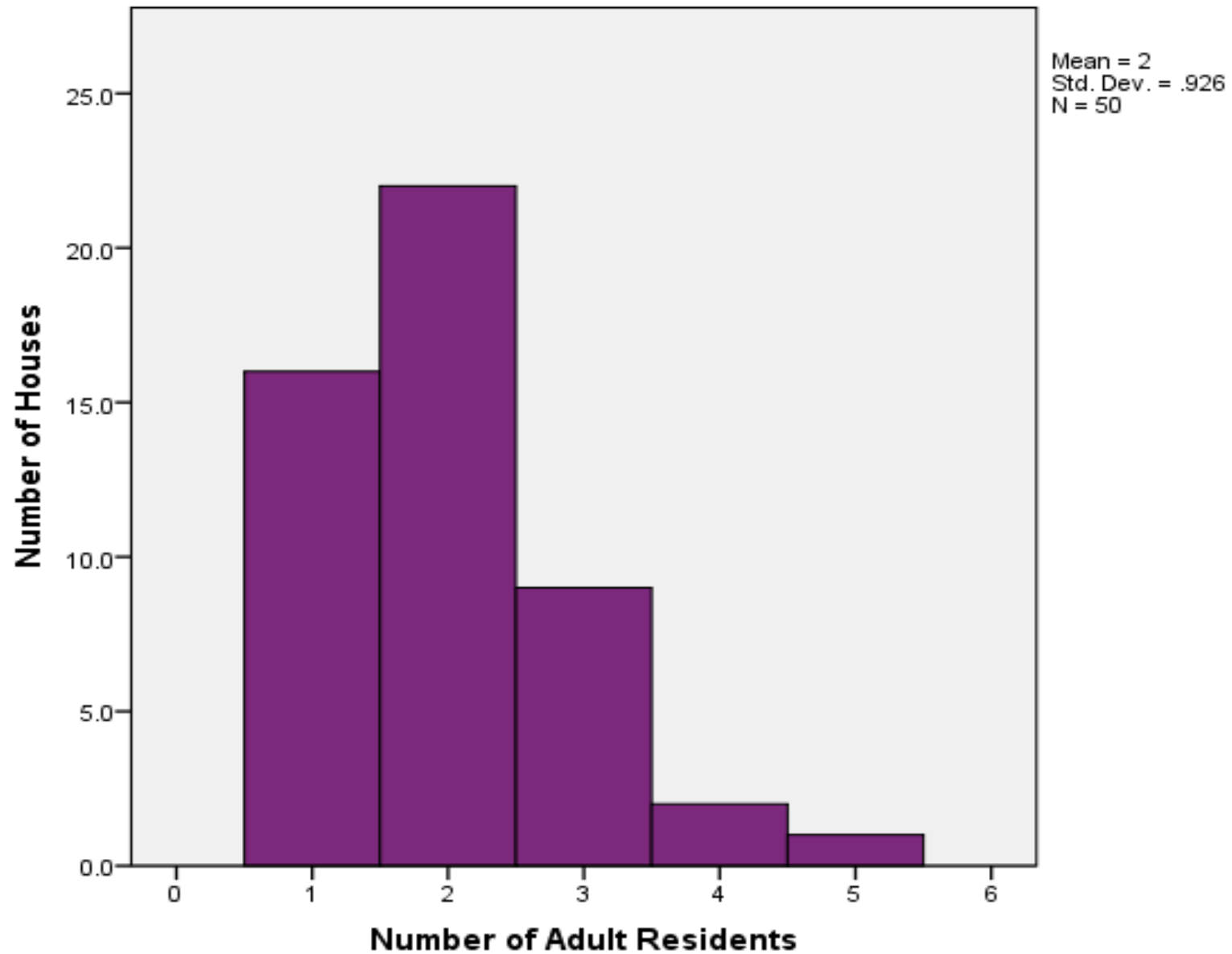
Mean = 5.239
Std. Dev. = 1.9313
N = 67



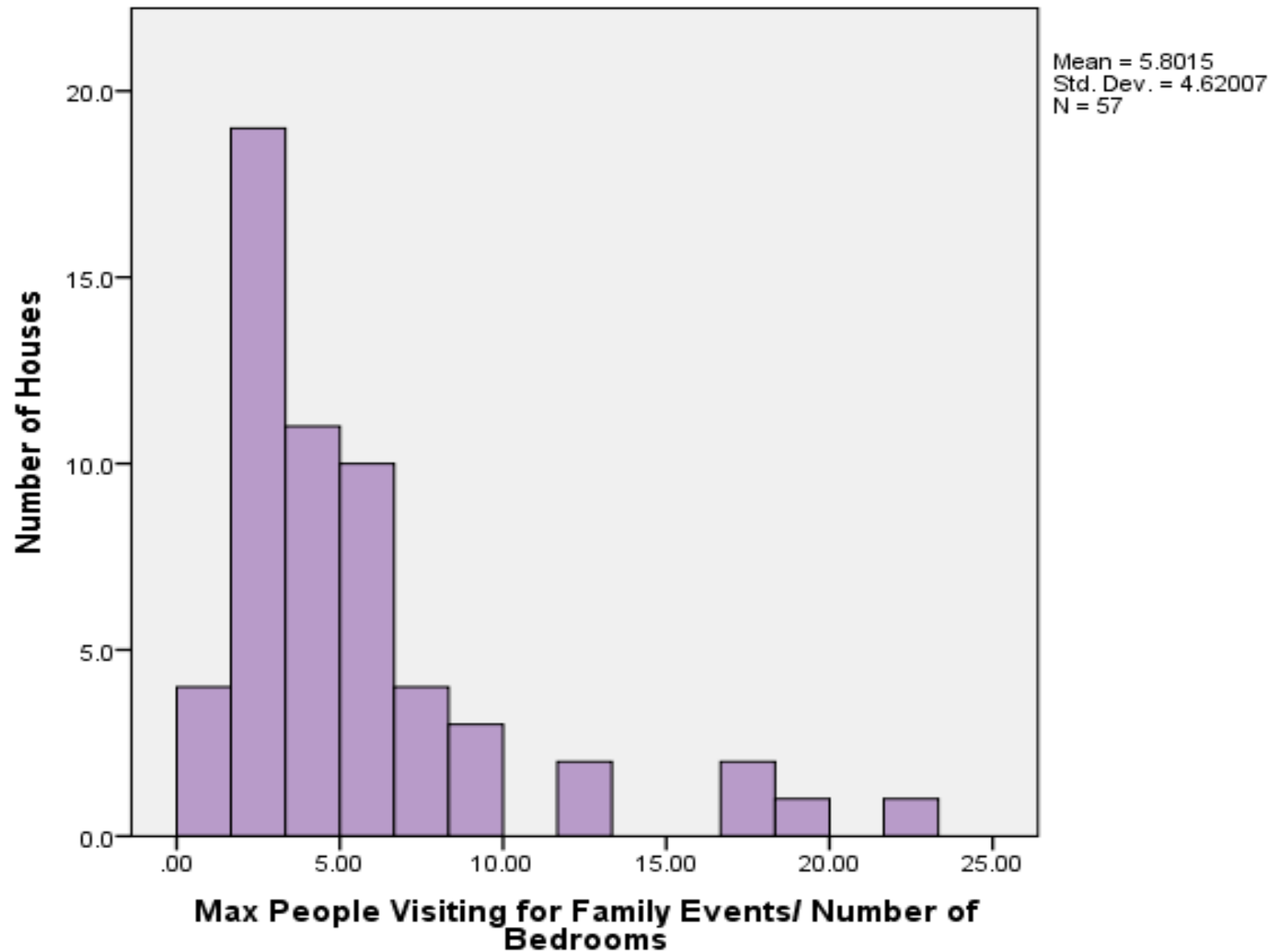
Number of Children per House



Total Adults Residing in the House



Max People Visiting for Family Events/ Number of Bedrooms



Quotes

Family base is across the road at the in-laws, we can't fit everyone here for a family gathering.

(Mother of 4 in 3 bedroom state house double storey house)

2 [bedrooms], especially for the teenagers who need their own space

(Mother of 7 in a 3 bedroom private rental)

1 extra, so my 13 year old son can come home; he stays with [my] mum.

(Mother of 4 in a 3 bedroom state house)

This is a safe house...mokos are always here. They live with their mum - street very violent neighbours ...my son-in-law is a P head, I've had run-ins with him...

(Grandmother of 4 in a 4 bedroom state house)

How many extra bedrooms would make your family happier?

Conclusions

- Participants loved i-Pad as a way of telling their stories
- Enabled us to measure beds, rooms and living areas
- Rich data collected that we're still analysing...
- Refining app to use for other data gathering
- People had lots of ways of ordering their households
- Lots of heaters not used, because of fear of fuel bills
- Some houses used legally for early childhood care – maximum of 4 children depending on space
- When children sick, parents take them to doctor & try & isolate them
- Availability of alternative community space relieves pressure on families