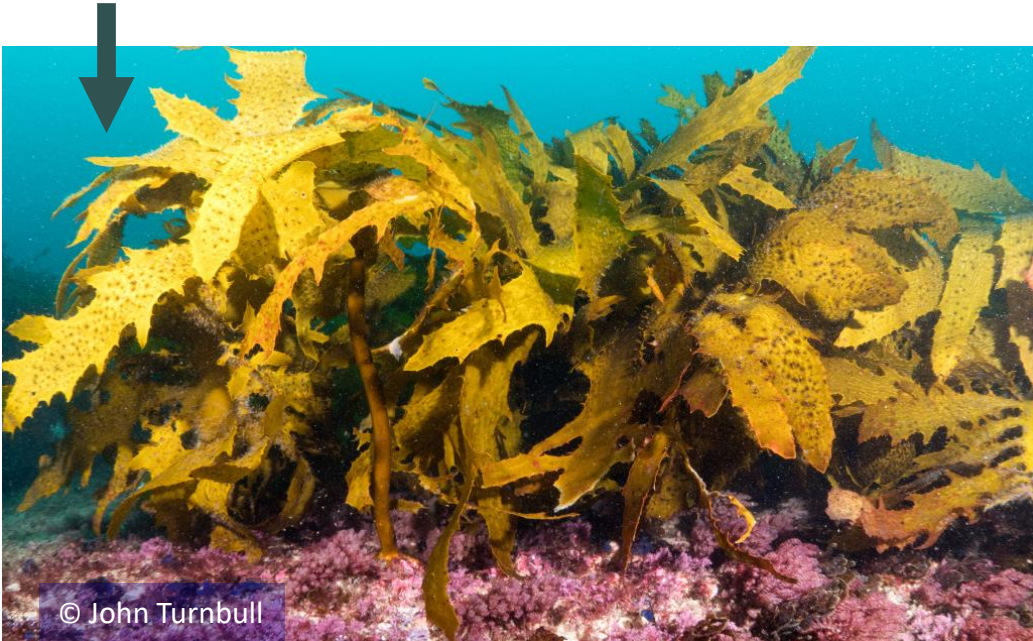


Does more sediment mean fewer kelp animals?

OVERVIEW

Changes in kelp forests due to human impacts can shift entire food-webs^{1,2}

Question: How do the animal communities living on *Ecklonia radiata* kelp change with impacts?



METHODS

Natural impacts: wave-exposure, depth, and
Human impact: sedimentation

How we can estimate productivity: biomass, food-web level, and source of food of the animal communities.

tiny crustacean
on a kelp blade

