

**Remember**  
**You don't need to be a**  
**medical graduate to do a**  
**PhD in the**  
**Department of Medicine**

**You can do science or**  
**clinical investigation**

We have a number of non-medical academic staff in our department who lead their own projects and supervise postgraduate students.

Most of our medical academic staff also lead projects that don't require their postgrads to be medical graduates.

**Some projects are available in the following broad categories:**

- **Chronic Obstructive Pulmonary Disease**
- **Physical, Brain, and Social Changes in Ageing**
- **Inflammation research in arthritis or cancer**
- **Kidney diseases/Nephrology**
- **Dialysis quality of life study and multiple drug-related projects**

# Research in Medicine

If you are interested in doing a PhD and think our department could offer some interesting projects, please contact:

**Research Administrator** for general enquiries:

[medicine.research-administrator@otago.ac.nz](mailto:medicine.research-administrator@otago.ac.nz)

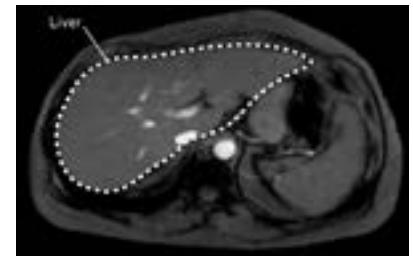
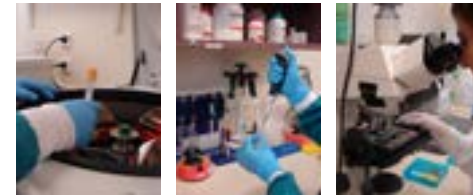
or contact members of the department listed in this brochure.

For more information about areas of expertise you can also check out the Dunedin School of Medicine staff expertise database:

<http://www.otago.ac.nz/dsm-medicine/>

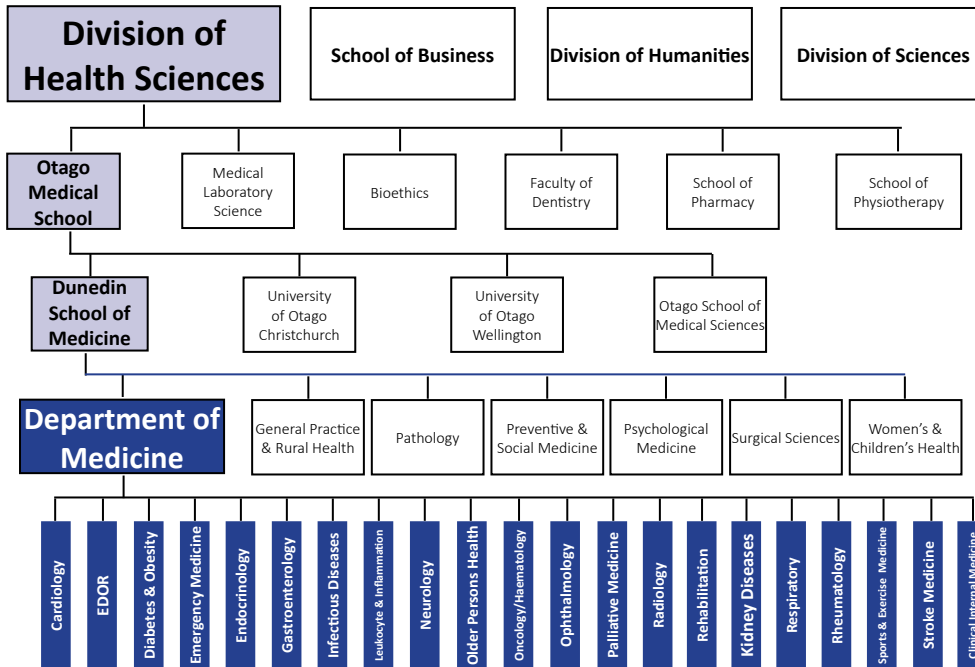
# Department of Medicine

[www.otago.ac.nz/dsm-medicine/](http://www.otago.ac.nz/dsm-medicine/)





# University of Otago



## Cardiology:

Associate Professor Gerry Wilkins  
 E: [gerard.wilkins@otago.ac.nz](mailto:gerard.wilkins@otago.ac.nz)  
 Professor Michael Williams  
 E: [michael.williams@otago.ac.nz](mailto:michael.williams@otago.ac.nz)

## Edgar Diabetes and Obesity Research (EDOR) Diabetes

Professor Jim Mann  
 E: [jim.mann@otago.ac.nz](mailto:jim.mann@otago.ac.nz)  
 Dr Kirsten Coppell  
 E: [kirsten.coppell@otago.ac.nz](mailto:kirsten.coppell@otago.ac.nz)

## Childhood obesity

Associate Professor Rachael Taylor  
 E: [rachael.taylor@otago.ac.nz](mailto:rachael.taylor@otago.ac.nz)

## Endocrinology:

Associate Professor Patrick Manning  
 E: [patrick.manning@southernhb.govt.nz](mailto:patrick.manning@southernhb.govt.nz)

## Rheumatology:

Associate Professor Simon Stebbings  
 E: [simon.stebbing@otago.ac.nz](mailto:simon.stebbing@otago.ac.nz)

## Neurology:

Associate Professor Graeme Hammond-Tooke  
 E: [graeme.hammond-tooke@otago.ac.nz](mailto:graeme.hammond-tooke@otago.ac.nz)  
 Dr Nick Cutfield  
 E: [nick.cutfield@southernhb.govt.nz](mailto:nick.cutfield@southernhb.govt.nz)

## Ophthalmology:

Dr Logan Mitchell  
 E: [logan.mitchell@otago.ac.nz](mailto:logan.mitchell@otago.ac.nz)

## Oncology:

Dr Chris Jackson  
 E: [chris.jackson@southernhb.govt.nz](mailto:chris.jackson@southernhb.govt.nz)

## Gerontology:

Associate Professor Debra Waters  
 E: [debra.waters@otago.ac.nz](mailto:debra.waters@otago.ac.nz)

## Kidney in Health and Disease:

Professor Rob Walker  
 E: [rob.walker@otago.ac.nz](mailto:rob.walker@otago.ac.nz)

## Gut Health (Gastroenterology):

Associate Professor Michael Schultz  
 E: [michael.schultz@otago.ac.nz](mailto:michael.schultz@otago.ac.nz)

## Respiratory Diseases:

Dr Ben Brockway E: [ben.brockway@otago.ac.nz](mailto:ben.brockway@otago.ac.nz)  
 Dr Jack Dummer E: [jack.dummer@otago.ac.nz](mailto:jack.dummer@otago.ac.nz)

## Clinical Exercise Physiology:

Dr Chris Baldi  
 E: [chris.baldi@otago.ac.nz](mailto:chris.baldi@otago.ac.nz)

## Leukocyte and Inflammation:

Dr Paul Hessian  
 E: [paul.hessian@otago.ac.nz](mailto:paul.hessian@otago.ac.nz)

## Sports and Exercise Medicine:

Dr Hamish Osborne  
 E: [hamish.osborne@otago.ac.nz](mailto:hamish.osborne@otago.ac.nz)