

University of Otago Bachelor of Pharmacy and Taylor's University, Malaysia

Pharmacy credit transfer

- complete your pharmacy degree at the University of Otago, Dunedin, New Zealand.



Complete 1.5 years of study at TU, plus 2.5 years at Otago and earn a University of Otago Bachelor of Pharmacy.

Why Otago?

The University of Otago is New Zealand's first university and the first choice for more than 21,000 students, including over 3,000 international students from 100 countries.

After 150 years Otago still leads the way when it comes to world-class, research-led teaching and a university campus experience second to none – the two core elements that set the University of Otago apart, and the reason students from across the country and around the world travel to this remarkable place.



Bachelor of Pharmacy (BPharm) at Otago

The University of Otago Bachelor of Pharmacy is the oldest university pharmacy degree in New Zealand and opens opportunities to practise as a pharmacist in various professional settings. It is a broad-based university programme in the physical, biological, social and health sciences. Graduates have a range of career opportunities as part of the healthcare workforce through primary health care, medicines management, community pharmacy and hospital pharmacy, as well as roles in prescribing. The Bachelor of Pharmacy is fully accredited by the New Zealand Pharmacy Council and is recognised as an approved qualification by the Pharmacy Board Malaysia.

Entrance requirements

Completion of prescribed TU papers with a minimum of a B grade (70%) average.

IELTS score of 6.0 in the academic module (with no individual band below 5.5).

Fees and scholarships

2024 tuition fee: NZ\$44,285 year 2 (estimate) NB: First year July intake will be less; NZ\$46,616 year 3-4

Scholarship: NZ\$3,000 is available to TU students who enrol into the Bachelor of Pharmacy at the University of Otago. Eligibility is based on academic achievement.

Career opportunities

Graduates may be eligible for a post-study work visa in New Zealand for up to three years. immigration.govt.nz



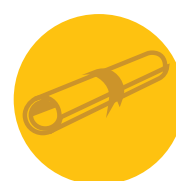
Ranked in the top 1% of universities in the world (QS World University Rankings)



95% of graduates go into work or on to further study (Otago graduate Opinion Survey)



Rated top university in New Zealand for international student experience (International Student Barometer)



Unmatched Supreme Award winners in the National Teaching Excellence Awards



Highest possible international quality rating



New Zealand's top university for educational performance (TEC Educational Performance Indicators)

1. Part 1 – papers at Taylor’s University

Semester	1	2
	PHC61504 Introduction to Pharmacy PHC61604 Human Anatomy and Physiology PHC62104 Principles of Life Sciences	PHC62204 Pharmaceutical Compounding and Dispensing PHC61704 Pharmacology 1 PHC62304 Pharmaceutical Organic Chemistry PHC62404 Physical Pharmaceutics

Semester	3
	PHC62504 Community Pharmacy Practice 1 PHC61804 Pharmacology II PHC62604 Principles of Pharmaceutical Chemistry PHC62704 Pharmaceutical Formulation and Development - I PHC62804 Biostatistics and Quality Use of Medicines

2. Part 2 – papers at the University of Otago

Year	1
2	PHCY220 Integrated Modules A – communicable diseases, dermatology, gastrointestinal and hepatic disorders and musculoskeletal conditions with integrated intensive patient management skills. * Students will need to complete an online version of PHCY210 with some additional service learning.

Year	First semester – February	Second semester – July
3	PHCY310 Integrated Modules B – respiratory, cardiovascular, renal disorders and endocrinology with integrated intensive patient management skills.	PHCY320 Integrated Modules C – central nervous system (CNS), oncology, palliative care, men’s and women’s health with integrated intensive patient management skills.

Year	Full year
4	PHCY410 Elective Studies A – enhancing future practise as a pharmacist PHCY420 Pharmacy Management PHCY430 Elective Studies B – research PHCY431 Structured Practical Experiential Programme – professional practice attachments PHCY432 Applied Pharmacotherapy and Patient Care

Further Information

Dr Foo Jhi Biau

School of Pharmacy
 Faculty of Health and Medical Sciences
 Taylor’s University
Email jhibiau.foo@taylors.edu.my

Professor Joel Tyndall

School of Pharmacy, University of Otago
Email pharmacy@otago.ac.nz
 otago.ac.nz/pharmacy