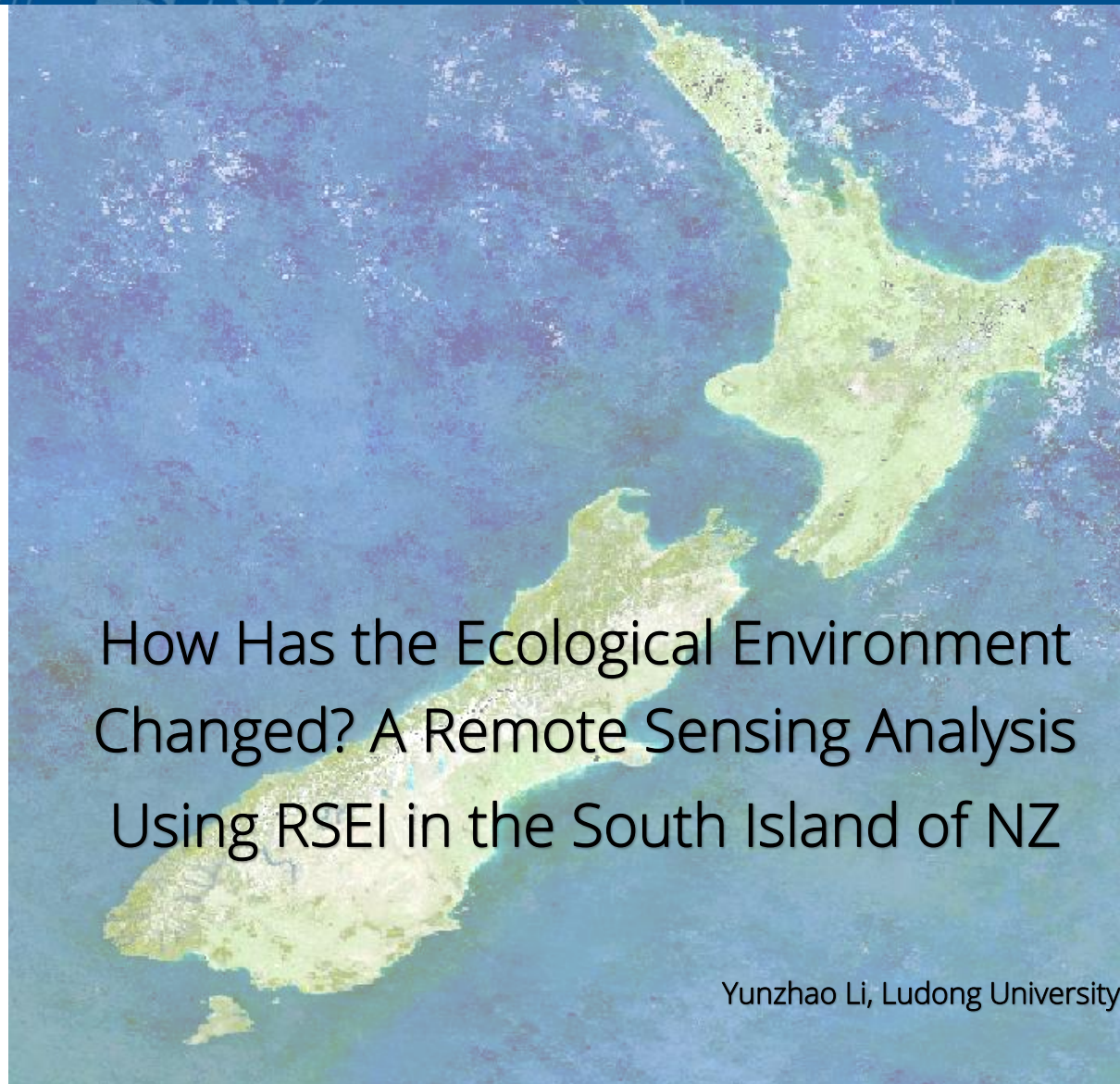


Te Kura Kairūri School of Surveying

Lunchtime Seminar Series



How Has the Ecological Environment Changed? A Remote Sensing Analysis Using RSEI in the South Island of NZ

Yunzhao Li, Ludong University

Are you interested in understanding how the ecological environment of New Zealand's South Island has changed?

At a regional scale, how is the environment around us evolving?

This presentation will explore nearly two decades of ecological change in the South Island using remote sensing techniques.

By utilizing MODIS data and the Remote Sensing Ecological Index (RSEI), we aim to gain deeper insights into the spatial and temporal dynamics of ecological quality across the region.

We can find more...

Thursday 21st August 2025 (12pm – 1pm)

L1 Lecture Theatre | School of Surveying, 310 Castle Street

OR Join remotely: <https://otago.zoom.us/> (ID: 979 1434 6880, P/W: 310310)