

Genealogical Sources Guide

Shipping Records



Ulimaroa, 1908-1916. Sidney Herbert Rawson, P2000-021/1-0354. Photography Collection.

Nau Mai Haere Mai ki Te Uare Taoka o Hākena:

Welcome to the Hocken Collections

He mihi nui tēnei ki a koutou

kā uri o kā hau e whā arā, kā mātāwaka o te motu, o te ao whānui hoki.

Nau mai, haere mai ki te taumata.

As you arrive

We seek to preserve all the taoka we hold for future generations. So that all taoka are properly protected, we ask that you:

- place your bags (including computer bags and sleeves) in the lockers provided
- leave all food and drink including water bottles in the lockers (we have a researcher lounge off the foyer which everyone is welcome to use)
- bring any materials you need for research and some ID in with you
- sign the Readers' Register each day
- enquire at the reference desk first if you wish to take digital photographs

Beginning your research

Most of the commonly used genealogical sources available at the Hocken Collections can be found in the Ready Reference section of the main reference area on the ground floor. Please ask staff if you need help locating any of these.

We hold numerous other sources—both published and unpublished—and you can search for material on our Online Public Access Catalogues:

- for books, theses, journals, magazines, newspapers, maps, and audiovisual material, use Library Search|Ketu. The advanced search - <https://tinyurl.com/mtske2x9> gives you several search options, and you can refine your results to the Hocken Library on the left side of the screen.

The Library Search Guide <https://otago.libguides.com/ketuhelp> contains helpful tips and assistance for using Library Search|Ketu;

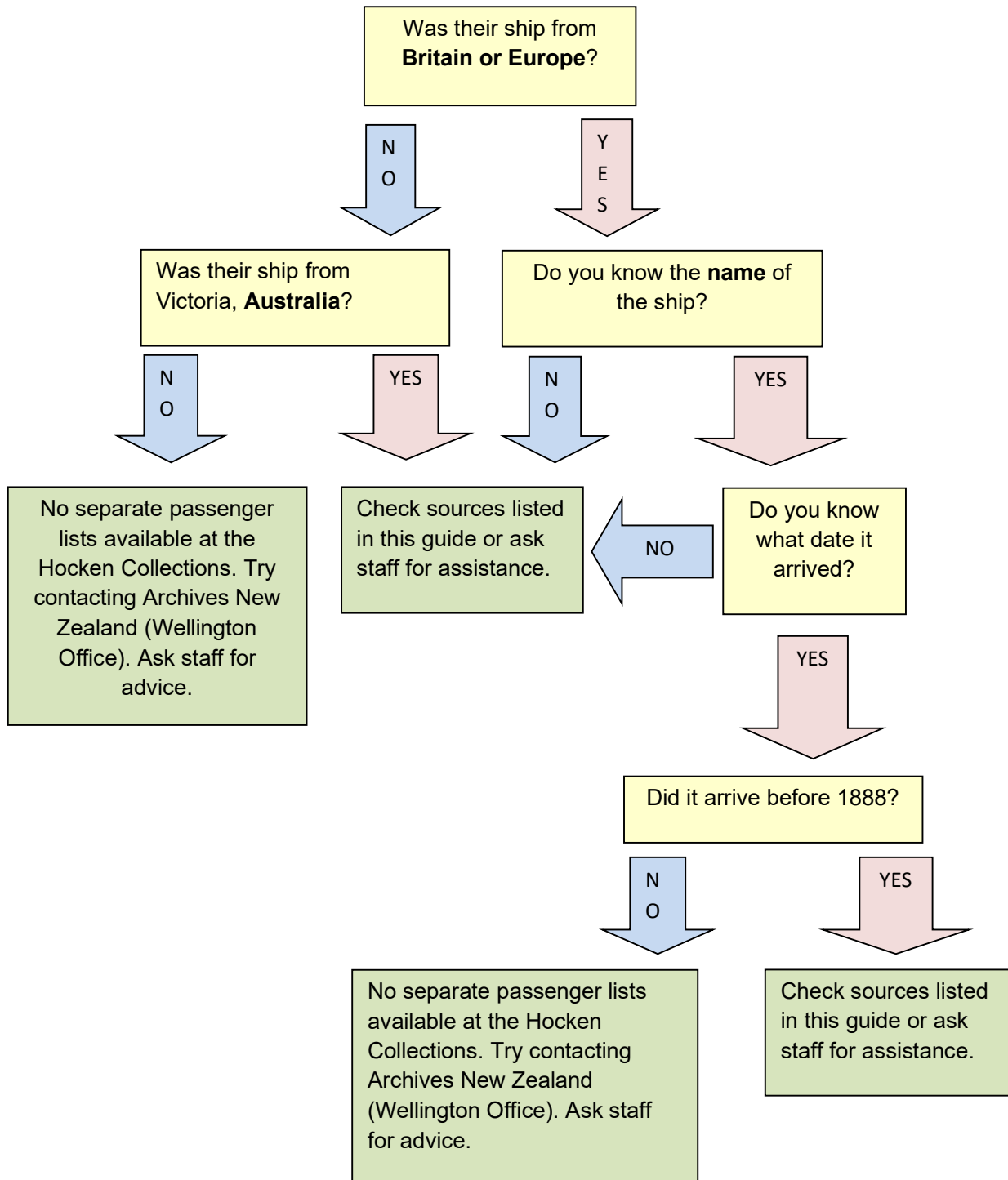
- for art, photographs and archives, use Hākena - <https://hakena.otago.ac.nz>. Listing of the ephemera collection has just begun on Hākena; please talk to desk staff if you have any questions about this collection.

The Hākena Search Help Guide <https://otago.libguides.com/hakena> contains helpful tips and assistance for using Hākena;

- digitised images of many collection items are available via Hocken Digital Collections at <https://hocken.recollect.co.nz/>. There are also digitised images of Hocken and University of Otago Special Collections material that can be viewed via <https://otago.ourheritage.ac.nz/>.

There is an online guide to the Hocken Collections for researchers at <https://otago.libguides.com/hocken>. It includes tips on referencing Hocken sources.

Tracing your ancestors' arrival at Otago



What do you know already?

If the **name** of the ship and its **date** of arrival are known, check the sources listed below for a passenger list.

If only the **name** of the ship is known check the *Comber Index* (see below) for arrival dates, then check the sources listed.

Otherwise, look for information and clues from -

- Obituaries and biographical dictionary entries
- Death records - these may provide the number of years your ancestor had been in the country
- Dates of first entry in directories and electoral rolls
- Dates and places of marriage and of the birth of children

All sources listed below are available in the ready reference area unless otherwise stated.

Arrivals from the United Kingdom & Europe 1848-1888

Contributions to the Early History of New Zealand [Settlement of Otago] by Thomas Morland Hocken Appendix F 1898

Contains passenger lists for ships that came to Otago from Great Britain for the period 1848 to 1851 (available online at <https://nzetc.victoria.ac.nz/tm/scholarly/tei-HocCont.html>). An expanded and corrected version is available at <https://www.ngaiopress.com/drhocken.htm>.

Settlers to Otago pre-1861 by Val Maxwell

An index to some of the individuals who arrived in Otago before 1861, it includes arrivals from Australia and the United Kingdom. Also available on microfiche.

List of Immigrants, Debtors to the Provincial Government of Otago for Passage Moneys 1869 and 1872

These lists include those individuals who still owed money to the Otago Provincial Government for their assisted passage from Great Britain. The 1869 list covers the period 1848 to 1869 while the 1872 list covers the period 1856 to 1872. The 1872 list also includes Southland immigrants for the period 1862 to 1868.

Passenger Lists to Otago 1869-1875 from the *Otago Provincial Government Gazettes*

A compilation of passenger lists that were published in the *Otago Provincial Government Gazette* for the period 1869 to 1875. They include assisted and guaranteed passengers.

Patrick Henderson Shipping Company Paying Passengers to New Zealand 1871-1880

These are the only separate passenger lists for paying passengers held by the Hocken Collections. They only include those passengers who departed by Patrick Henderson Shipping Company vessels from Greenock, Glasgow, and London during the period 1871-1880. The original lists can be found on the microfiche version.

Otago & Southland Assisted Passengers from U.K. & Europe 1872-1888

These passenger lists are for assisted immigrants from the United Kingdom and Europe for the period 1872-1888. Most entries refer to arrivals at Port Chalmers, although some arrivals at Bluff are included.

Comber Index to Shipping to New Zealand 1839 to 1889

An index to information about the ships that arrived in New Zealand from the United Kingdom and Europe during the period 1839 to 1889. Use it to locate the date and port of arrival when only the name of a ship is known. Also on microfiche.

Index to References to Migrant Voyages in the Appendices to the Journals of the House of Representatives

An index to reports on voyages with emigrants sponsored by the New Zealand Government for the period 1871-1884 published in the *Appendices to the Journals of the House of Representatives*. The reports can then be located in the journals on the reference shelves or via Papers Past at <https://paperspast.natlib.govt.nz/parliamentary>.

Shipping folders

Photocopies of passenger lists and/or accounts of arrival compiled from newspapers and arranged alphabetically by ship's name.

Arrivals at Other New Zealand Ports

Most of the sources held are for arrivals at Port Chalmers, but some include arrivals at Bluff. If your ancestor arrived at another New Zealand port and you know the name of the ship and the date of arrival, then check our holdings of newspapers for that area or try Papers Past <https://paperspast.natlib.govt.nz/>.

Otherwise, you should check the other contacts listed below or contact the Alexander Turnbull Library, Archives New Zealand (Wellington Office) or the appropriate local public library – ask staff for advice.

Arrivals after 1888

The Hocken Collections do not hold any separate records for arrivals after 1888. If the name of the ship and its date of arrival are known you may be able to locate a passenger list in the appropriate newspaper. Otherwise, you should contact Archives New Zealand (Wellington Office).

Crew lists

The Hocken Collections do not hold separate crew lists. Archives New Zealand (Wellington Office) holds some crew lists from 1883 on.

Arrivals from Victoria, Australia 1852-1923

Outwards Passenger Lists from Victoria, Australia to New Zealand, British and Foreign Ports for the period 1852-1923 are available to search at <https://bit.ly/2LGyAMW>. You can also look for inwards passenger lists to Victoria, Australia from Britain for the period 1839-1871 and overseas ports 1852-1923.

We also hold the following records on microfiche:

- *Passenger Lists from Victoria, Australia outwards to New Zealand 1852-1880*
- *Immigration to Victoria Inward Passenger Lists British Ports 1852-1879*
- *Immigration to Victoria Inward Passenger Lists Foreign Ports 1852-1879*
- *Immigration to Victoria Overseas and Intercolonial Ports 1846-1852 Register of Inward Shipping and Index*
- *Immigration to Victoria Assisted German Immigrants Passenger Lists and Index 1849-1850*

The Hocken Collections do not hold separate passenger lists for arrivals from other Australian states, but a number of passenger lists for New South Wales, Western Australia, Tasmania, Queensland and Victoria are now available via the Ancestry database <https://www.ancestry.com.au>. This is available on any of the public computers in the library (University of Otago/Otago Polytechnic staff and students can also access this database offsite with their account details).

If the name of the ship and its date of arrival are known check the appropriate newspaper for a passenger list, otherwise you should contact Archives New Zealand (Wellington Office).

Departures

The only separate records held of departures from New Zealand ports are for emigration to Victoria, Australia for the period 1852-1923. They are all on microfiche or try the online indexes at <https://bit.ly/2LGyAMW>. The Hocken Collections do not hold separate passenger lists for departures to any other states of Australia or any other countries. If the name of the ship and its date of departure are known, check the appropriate newspaper for a passenger list, otherwise you should contact Archives New Zealand (Wellington Office).

Other Relevant Sources

Print Guides

Friends of the Hocken Collections Bulletin 14: Ships, Sailormen and their passengers
https://www.otago.ac.nz/library/pdf/hoc_fr_bulletins/14_bulletin.pdf

Hākena – Archives, Ephemera, Art and Photography catalogue

Check this catalogue, available at <https://hakena.otago.ac.nz> for unpublished material such as shipboard diaries, some photographs and passenger lists, and shipping company records.

Photographs

Check Hākena for holdings of photographs of ships in the collections. Some are viewable online via Hocken Digital Collections at <https://hocken.recollect.co.nz/>. Check Library Search|Ketu <https://www.otago.ac.nz/library/index.html> for books on various ships and shipping companies as these often include images of ships.

Microfiche

A Guide to Firsthand Shipboard Accounts for Voyages to New Zealand 1840 to 1900 compiled by Marsha Donaldson. 1998.

New Zealand Assisted Passenger Lists 1855-1871. Ships into Lyttelton, sometimes Timaru compiled by Heather Morris and Barbara Hafslund. 1994.

New Zealand Shipping Company Register 1875-1893 published by New Zealand Society of Genealogists, 1988. Details of ships only.

Port of Wellington Entry 1856-1887 published by New Zealand Society of Genealogists, 1988.

Publications

Some of the publications listed below are held in the ready reference section. The others must be ordered via Library Search|Ketu.

Henry Brett (1976). *White Wings*. (2 volumes). Christchurch: Capper Press. Reprint. Contains information about, and sometimes photographs of, the ships that came to New Zealand from the United Kingdom during the period 1840 to 1900. Available online at <https://nzetc.victoria.ac.nz/tm/scholarly/name-207496.html> and via Ancestry.

M.A. Chapman (1975). *The golden years of shipping industry: a study of shipbuilding and repairing work in Port Chalmers, 1862-1864*. B.A.(Hons) dissertation. Dunedin: University of Otago.

Ian N. Church (c2001). *Opening the manifest on ... Otago's Infant Years. Shipping Arrivals and Departures, Otago Harbour and Coast 1770-1860*. Dunedin, N.Z.: Ian Church and Otago Heritage Books. A chronological record of the ships that arrived; it includes names of some passengers, or the sources of passenger lists.

Jennie Coleman; Otago Settlers Association (2000). *John Wickliffe*. Dunedin, N.Z.: Otago Settlers Association and New Zealand Studies Centre, Hocken Library, University of Otago. A set of commemorative booklets on the first five ships (John Wickliffe, Philip Laing, Blundell, Bernicia, and Victory) with Free Church settlers to arrive at Otago.

Bruce E. Collins (1995). *Rocks, Reefs and Sandbars. A History of Otago Shipwrecks*. Dunedin: Otago Heritage Books.

Catherine Delahunty (2007). *Shipping Arrivals & Departures listed in Dunedin's Morning Herald 1881*. Dunedin: Catherine Delahunty. A list of shipping arrivals and departures for the year 1881 organised in three volumes – indexed by name of ship, surname, or arrival date of ship. It includes coastal shipping within New Zealand ports, as well as overseas arrivals and departures.

David Hastings (2006). *Over the mountains of the sea: life on the migrant ships, 1870-1885*. Auckland, N.Z.: Auckland University Press.

Gavin McLean (1985). *Otago Harbour: Currents of Controversy*. Dunedin: Otago Harbour Board.

John McLean (2015). *Voyages of the pioneers to New Zealand, 1839-85*. Wellington, New Zealand: Winter Productions.

Katherine Milburn (1995). *Ship deserters from the Otago Police Gazette 1861-1877*. Dunedin: Hocken Library. A list of seamen described as deserters in the *Otago Police Gazette* 1861-1877.

Mary Lindsay Nevill (2014). *Female Assisted Immigrants to Otago, 1862-1863*. Thesis (P.G. Dip. Arts). Dunedin: University of Otago. This thesis includes lists of women immigrants and ships with female immigrants.

Ian Nicholson (1990). *Log of Logs: a catalogue of logs, journals, shipboard diaries, letters, and all forms of voyage narratives, 1788 to 1988, for Australia and New Zealand, and surrounding*

oceans. Aranda, A.C.T.: Roebuck. A catalogue of logs, journals, shipboard diaries, letters and all forms of voyage narratives for Australia and New Zealand and surrounding oceans for the period 1778 to 1998 and their location.

Roebuck Society (1983-<1998>). *Shipping Arrivals and Departures Tasmania*. Canberra: Roebuck Society; Woden, A.C.T.: Navarine Publishing. This is part of a Roebuck Society series and includes Victoria, South Australia and Sydney. A range of dates is covered and there are several volumes for some areas.

M.N. Watt (1962?). *Index to the N.Z. section of the Register of all British ships 1840-1950 (inclusive)*. Wellington N.Z.: The New Zealand Ship and Marine Society. A register of every vessel registered in New Zealand up to and including 1950. It also includes details of masters, ownerships and ship builders. This is also available via Ancestry.

Websites

New Zealand, Archives New Zealand, Passenger Lists, 1839-1973 - images and index of the ship passenger lists from Archives New Zealand. There are various types of lists including both outbound and inbound passengers at the various port of New Zealand. The earliest outbound lists are from minor ports (ports other than Auckland or Wellington) and begin in 1886. The inbound passenger lists also include airplane arrivals in Auckland beginning in 1939 and continuing through 1965. Additional records will be added in the future. <https://familysearch.org/search/collection/1609792>

Immigration chronology of selected events 1840-2008 – a useful summary of key dates and changes to immigration policy in New Zealand since 1840. <https://goo.gl/qIwTRq>

Passenger Lists Leaving UK 1890-1960 - outward passenger lists for long-distance voyages leaving the British Isles from 1890 to 1960. <https://goo.gl/VvxzsH>

Auckland Council Libraries Auckland Area Passenger Arrivals 1838-1889, 1909-1921. - search Auckland area passenger arrivals 1838-1889, 1909-1921 and passenger vessels 1838-1886. <https://bit.ly/2VIQ8Pf>

Puke Ariki New Plymouth Passenger List Database 1852-1880 - this database is compiled from the passenger lists published in the *Taranaki Herald*. It covers the period 1852 -1880 for arrivals to and departures from New Plymouth. <http://tinyurl.com/mrw4http>

Christchurch City Libraries Shipping Lists 1856-1874 - passenger lists for ships to Canterbury that carried assisted immigrants. <http://tinyurl.com/2p7xhcn9>

Other contacts

Archives New Zealand Migration guide <https://tinyurl.com/5ardnzce>

Alexander Turnbull Library <https://natlib.govt.nz/researchers/guides/family-history>

Canterbury Museum <https://www.canterburymuseum.com/>

Christchurch City Libraries <https://my.christchurchcitylibraries.com/family-history/passenger-lists/>

Toitū Otago Settlers Museum - In the Research Centre visitors can search the OASES database on early settlers, and their archives collection includes shipboard diaries.
<https://www.toituosm.com/>

Invercargill City Libraries & Archives <https://ilibrary.co.nz/research-archives/family-history/>

Other guides in this series include:

A General Guide

Researching Whakapapa

Births, Deaths & Marriages

Education

Occupations

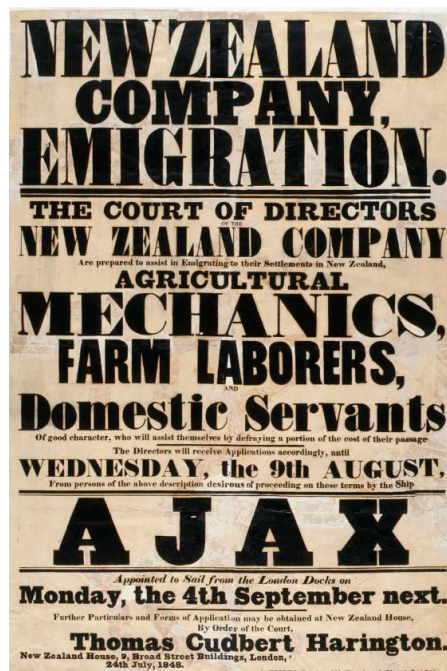
Residences

Orphanages

Internet Sources

Printed guides are freely available in the Hocken or can be downloaded online at

<https://www.otago.ac.nz/library/hocken/otago038951.html>



'New Zealand Company, Emigration.' London: New Zealand Company, 1848. Eph-0023-JV-D-07 Hocken Posters Collection. S18-539

Hocken Collections/Te Uare Taoka o Hākena
90 Anzac Ave, PO Box 56, Dunedin 9054
Phone 03 479 8868
reference.hocken@otago.ac.nz
<https://www.otago.ac.nz/library/hocken/>

For hours, please check our website:
<https://www.otago.ac.nz/library/hocken/>