

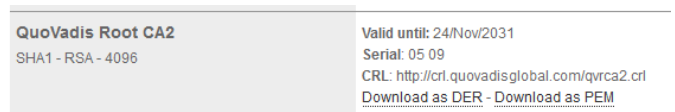
How to connect to the eduroam Wi-Fi service at another location using Mac OS X

These instructions will help University of Otago staff and students connect to the eduroam wireless (Wi-Fi) service at participating locations. The default eduroam WLAN settings for your laptop are:

Eduroam Wi-Fi Security Configuration	
SSID	eduroam
Security	WPA2-Enterprise (802.1X/EAP)
Authentication Method	PEAP-MSCHAPv2
Encryption Type	AES-CCMP
Login User Account	<university username>@otago.ac.nz
Validate Server Certificate	AddTrust External CA Root OR AusCERTServerCA.crt

The Trusted Root CA certificate can be downloaded here if required:
<https://www.quovadisglobal.com/QVRepository/DownloadRootsAndCRL.aspx>

Select: QuoVadis Root CA2
SHA1 - RSA - 4096
Download as DER

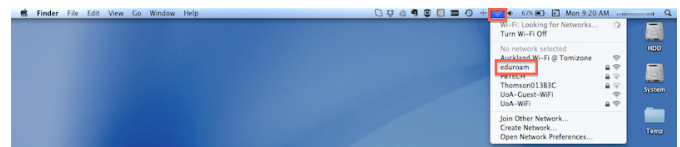


Setting up an eduroam wireless connection at another campus using Mac OS X

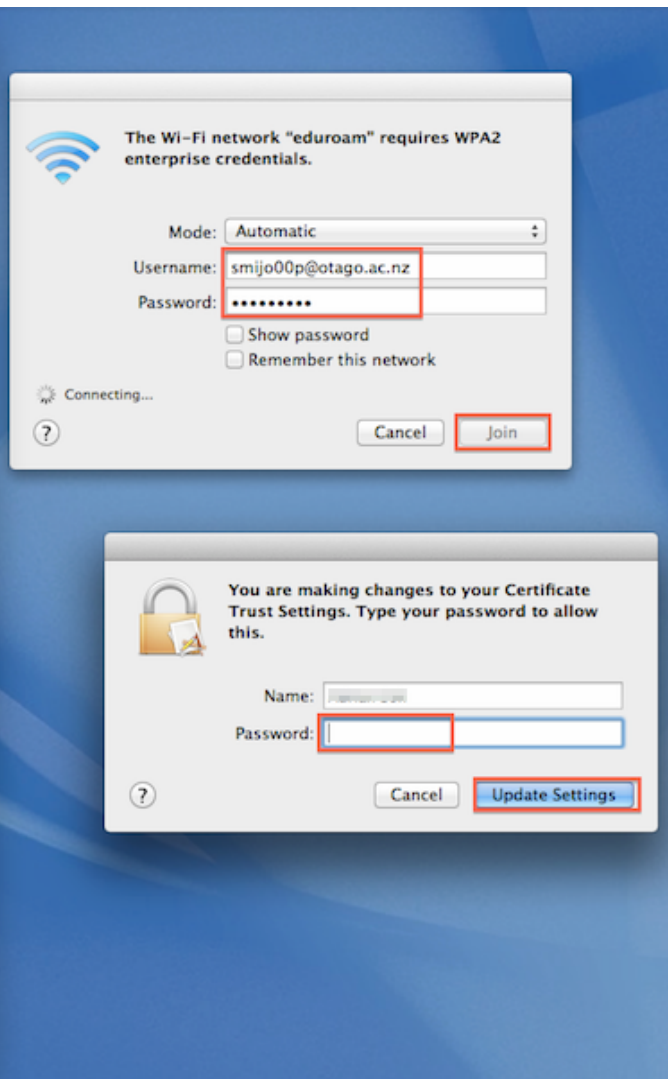
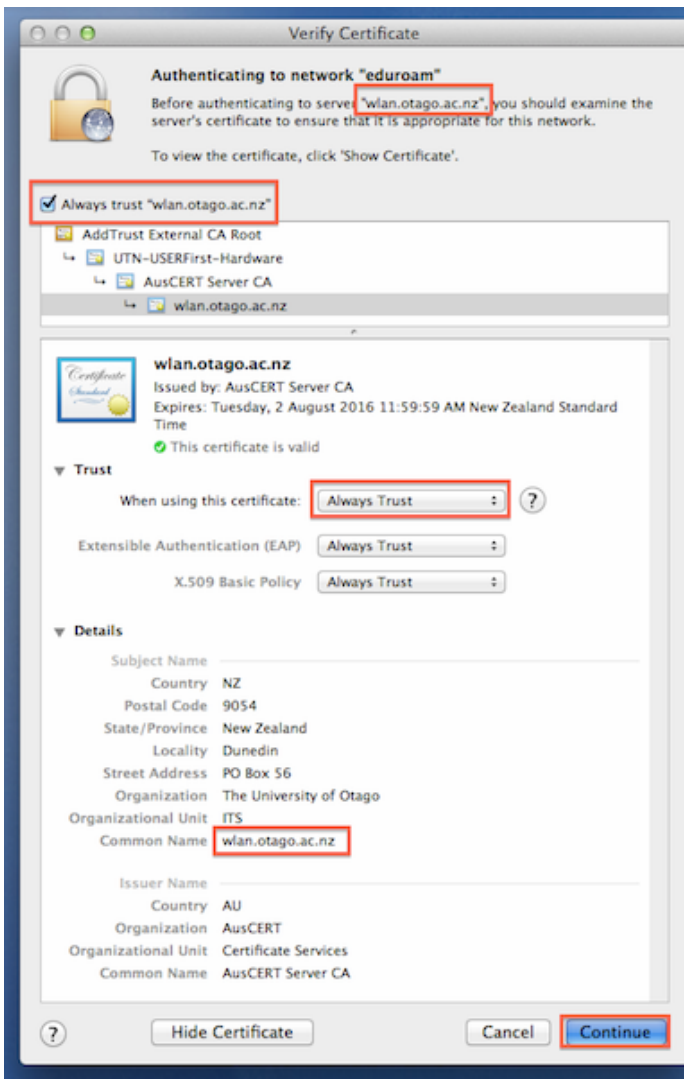
This section provides step-by-step instructions to configure your eduroam WLAN settings.

1. Once you are at the eduroam-participating location, click on your **Wi-Fi** icon (wireless fan) in the menu bar, and click on **eduroam** from the available networks.
2. You will be prompted to supply WPA2 enterprise credentials:
 - **Mode:** should be **Automatic**
 - Enter your University of Otago username (in the format <username>@otago.ac.nz) and password.

Click **Join**.



3. When you are asked about **Authenticating to network "eduroam"**, make sure that the server authenticating is **wlan.otago.ac.nz** (the screenshot [on the next page](#) will help):
 - Check the **Always trust "wlan.otago.ac.nz"** box.
 - From the drop-down menu for **When using this certificate, choose Always Trust**
 - The **Certificate Name** should show as **wlan.otago.ac.nz**
 - Enter your password to allow these changes and click the **Update Settings** button.



- In your Wi-Fi menu, eduroam should now be connected (ticked).

Open your web browser and go to <http://www.otago.ac.nz> to confirm that you are connected to the eduroam network.

