

Life at 133

Reflections on Public Health

Caroline McElnay

Director of Public Health

Ministry of Health

Life at 133

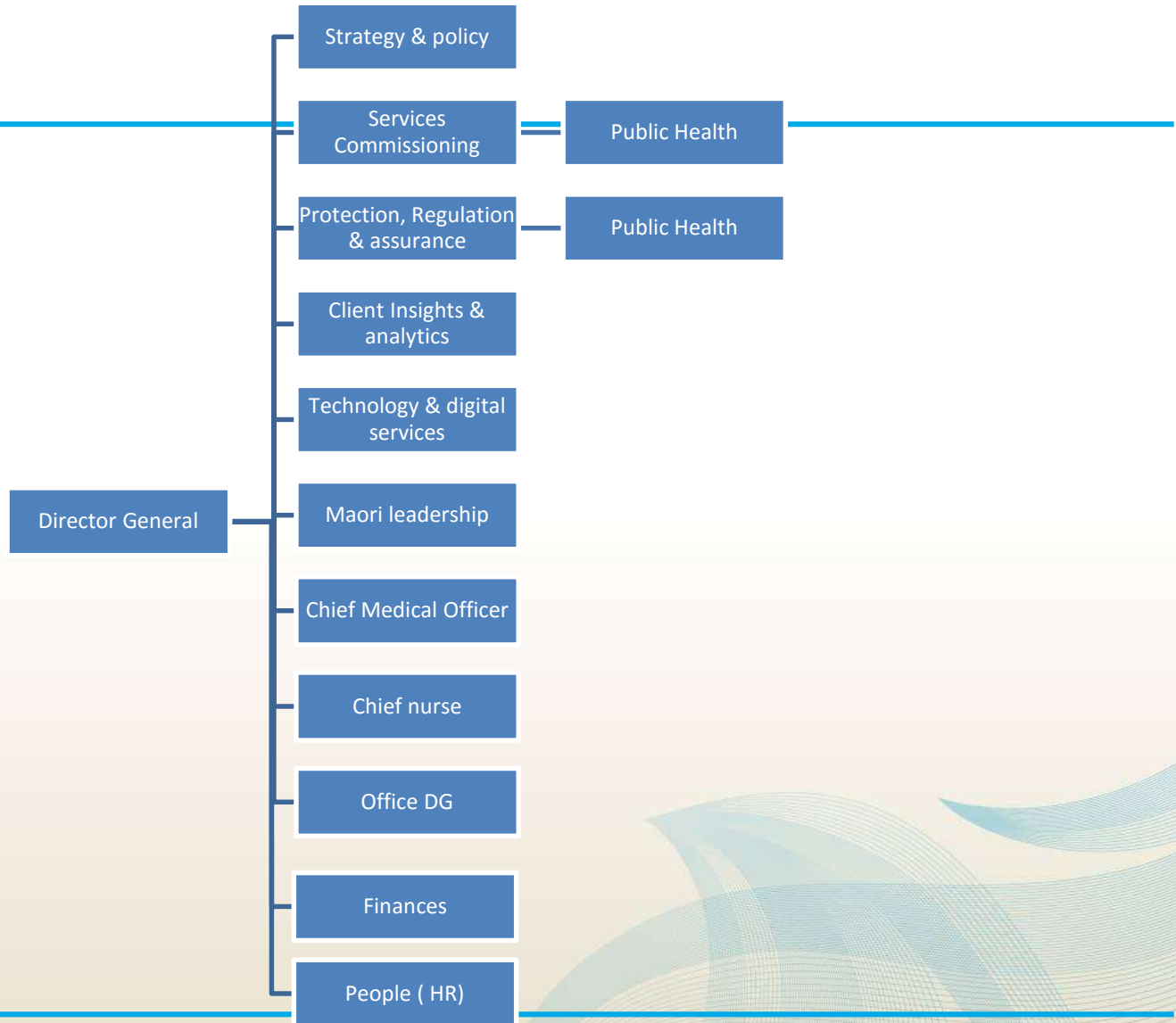
Seeing the big picture

Working together

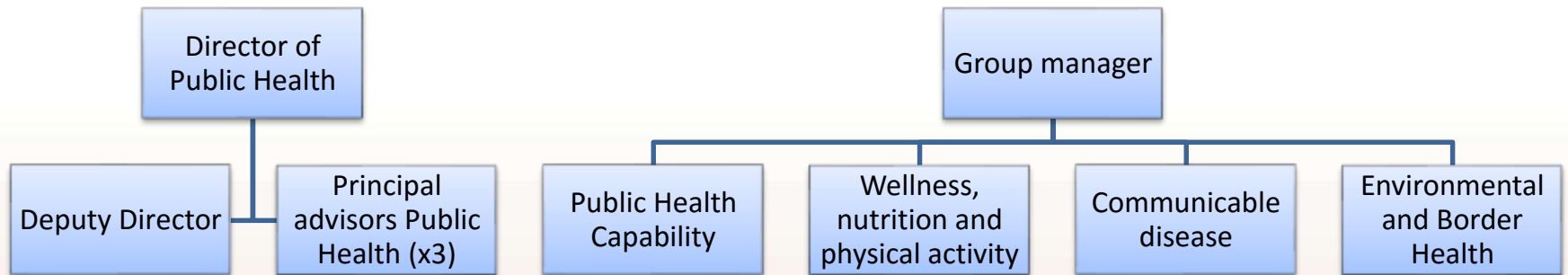


Life at 133






Public Health



Public Health Group Business Plan 2017-2018

Mission:

To improve and protect public health and wellbeing and reduce health inequity by influencing policies, practices and behaviours that support New Zealanders live well, stay well and get well at the population level.



Core Business

1. **Advisory role**

- Provide advice to government on public health issues
- Provide advice on public health issues to the wider health sector and other key stakeholders

2. **Regulatory focus**

- Administer and implement legislation

3. **Meet NZ's commitments under IHR and other international agreements**

- Preparedness for and response to international public health issues
-

Core business continued

4. Support provision of safe drinking water to communities

- Technical advice on management of drinking water supplies

5. Participate in global health initiatives

- Meet NZ's commitment to global health
-
- 


Director of Public Health

Chief advisor Public health within the Ministry, to health sector, to other sectors

National Leadership role especially with Statutory officers (Medical Officers of Health)

Liaising with international health organisations on international health threats

Statutory appointment under Health Act

- Independent advice can be given to the Director General and the Minister of Health
-
- 

Public Health Priority Projects 17/18

1. Improved surveillance and communication of infectious diseases **CD**
 2. Development of a national public health action plan **DPH**
 3. Transforming the public health group **MPH**
 4. Improving surveillance of environmental health risks **EBH**
 5. Verifying measles and rubella elimination **DPH**
 6. Keeping kids healthy (better public services target 3) **DPH**
 7. Improving nutritional status and physical activity **WNPA**
 8. Preparing action plan for health and environment in a changing world **EBH**
-

-
9. Managing antibiotic resistance **CD/ DPH**
 10. Improved readiness for pandemic influenza **DPH**
 11. Enhancing border health protection **EBH**
 12. Responding to Havelock North Drinking water inquiry **EBH**

.....



PHP PORTFOLIOS

Caroline

- External relationships
- Immunisation
- Drinking water

Harriette

- Food safety
- Obesity
- Communicable diseases

Niki

- Rheumatic fever
- BPS target 3
- Pandemic planning

Natasha

- Global health
- Public Health action plan
- AMR

Richard

- Climate change
 - SDGs
 - Environmental health
-

SEEING THE BIG PICTURE



Health equity in Hawke's Bay McElnay 2014

Health is created by more than just good medical care. Optimal health for everyone requires excellent schools, economic opportunities, a clean environment, quality housing, good transport systems, safe neighbourhoods, opportunities for being physically active and much more. There is a limit to what one agency can do by itself in providing all of this.

Good health and well-being requires broad community effort and leadership from all corners of society.



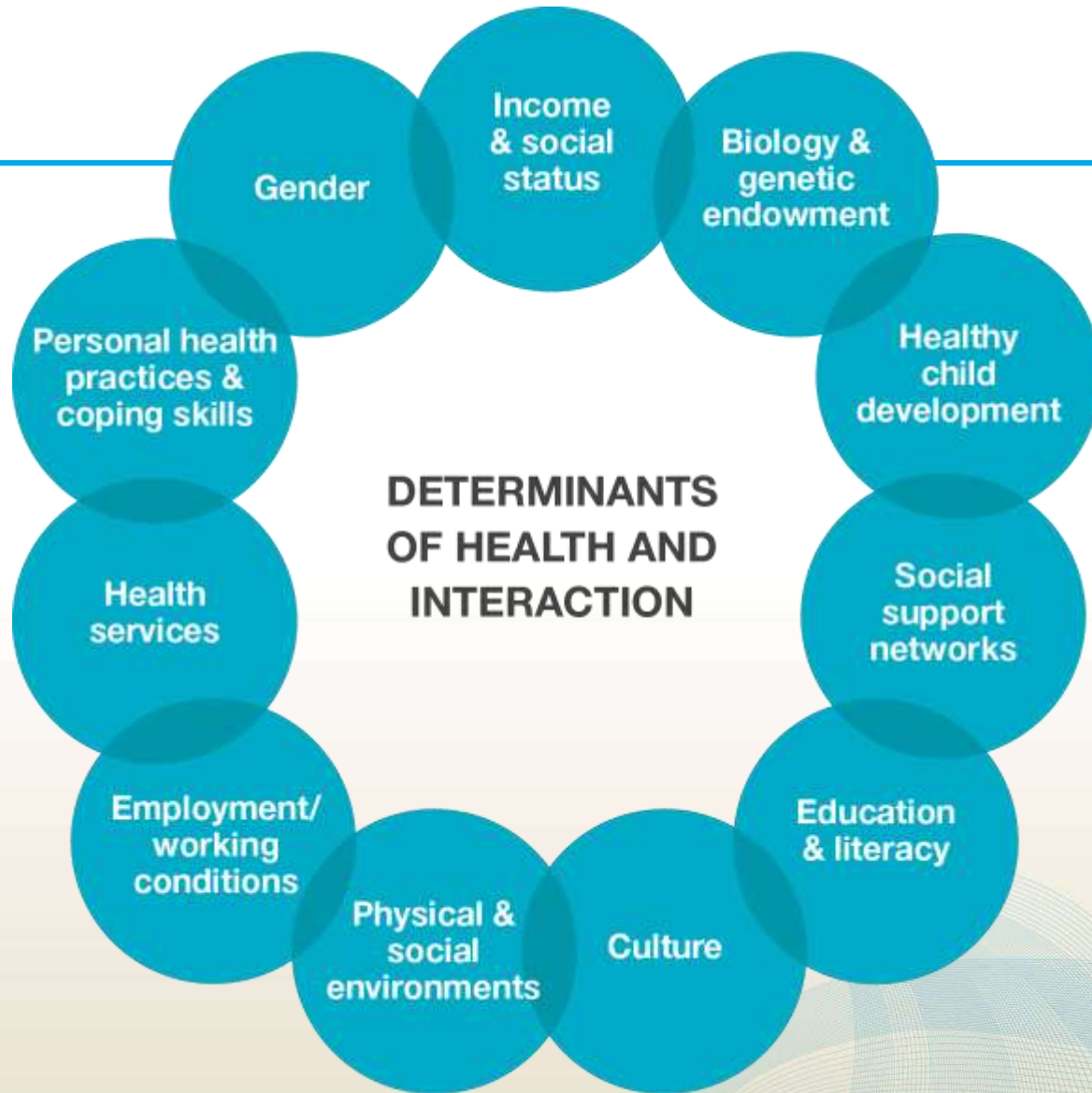


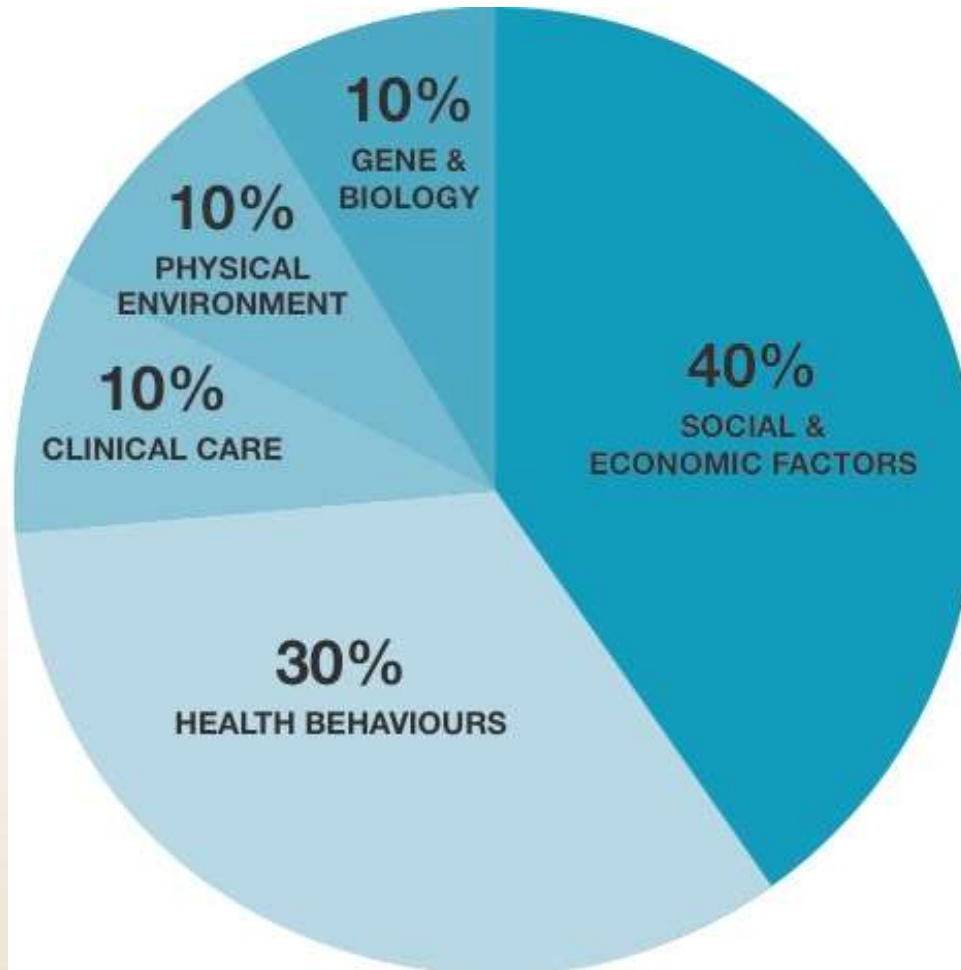
**IN
HEALTH EQUITY
IN HAWKE'S BAY**

WE HAVE ALL GOT A ROLE TO PLAY

KEY FINDINGS 2014

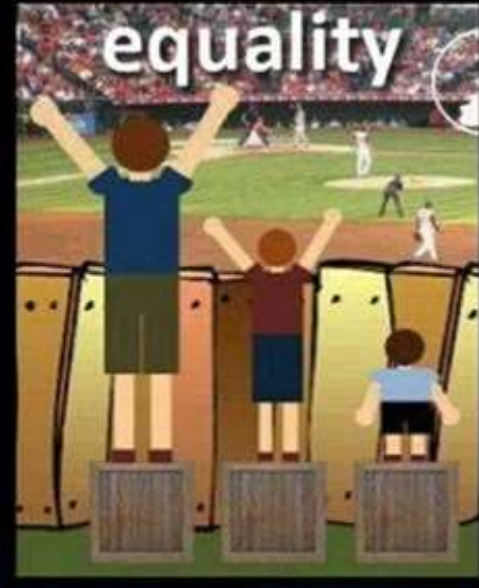
www.hawkesbay.health.nz







Equality vs. Equity



EQUALITY=SAMENESS

**GIVING EVERYONE THE SAME
THING → It only works if
everyone starts from the same
place**



EQUITY=FAIRNESS

**ACCESS to SAME
OPPORTUNITIES → We must first
ensure equity before we can
enjoy equality**




Influences outside the health system...are vital to people's wellbeing and health

Health influences all of life – many factors contribute to health

Partnering across government

Investment approach – long term impacts / best outcomes

Challenges – living longer, obesity, inequity, funding sustainability, workforce aging, population needs and expectations changing – more ethnically diverse



Opportunities - focusing on preventing illness and by making healthy choices easy

Aligning behaviours: moving from:

- treatment to prevention and support for independence,
 - a focus on the individual to a wider focus on family and whanau
 - Service centred to people centred
 - Competition to trust, cohesion and collaboration
 - Fragmented silos to integrated social responses
-

New Zealand Health Strategy



Five strategic themes of the Strategy



Working together

Passion

Patience

Persistence

People

Respect

Collaboration,

Connectedness,

Strength of many

Working together in public health

Tackling determinants holistically rather than one by one

Influencing non-health sectors

Focus on Equity

Priorities

We all have a part to play



Whakatauki

Naku te rourou nau te rourou ka ora ai te iwi

With your basket and my basket the people will live



