

# CPD Workshop

for Medical Imaging Technologists and Radiation Therapists

## The Liver

- Paul Kane
- Dept Radiation Therapy, UOW
- Saturday 11th March 2017

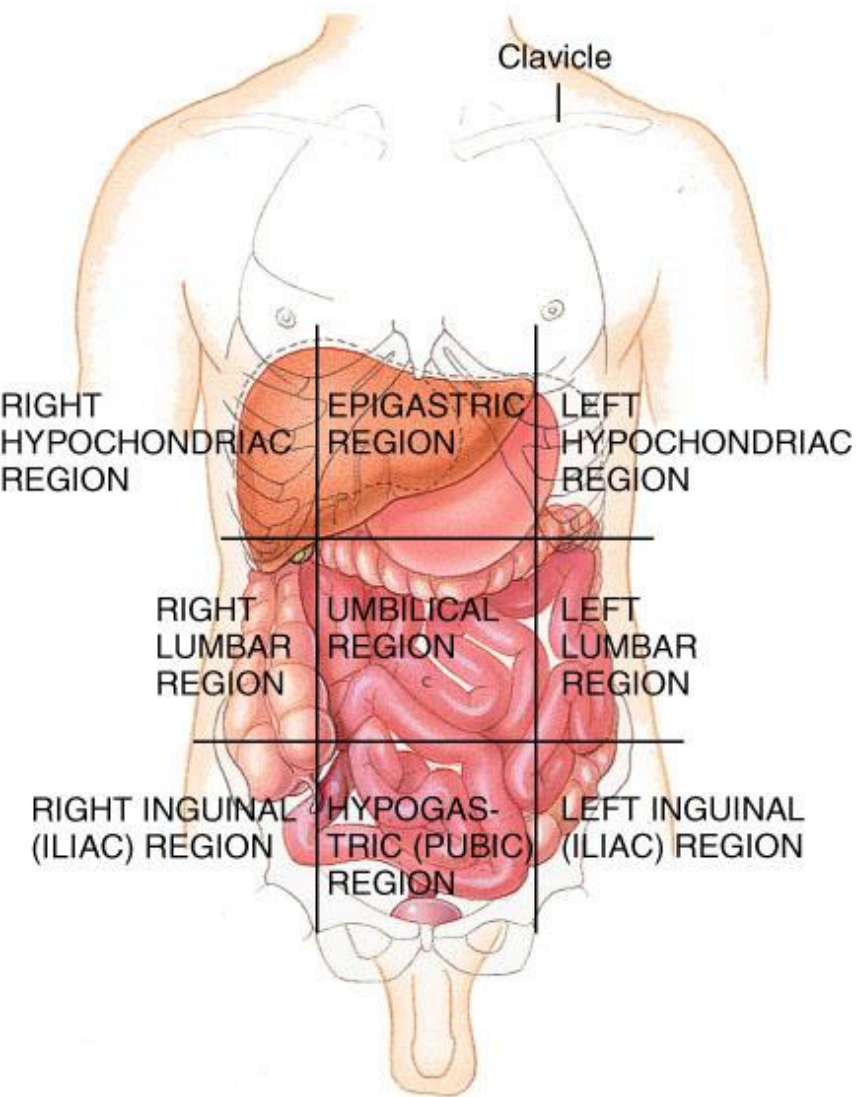


# Mythbusters.....maybe not?



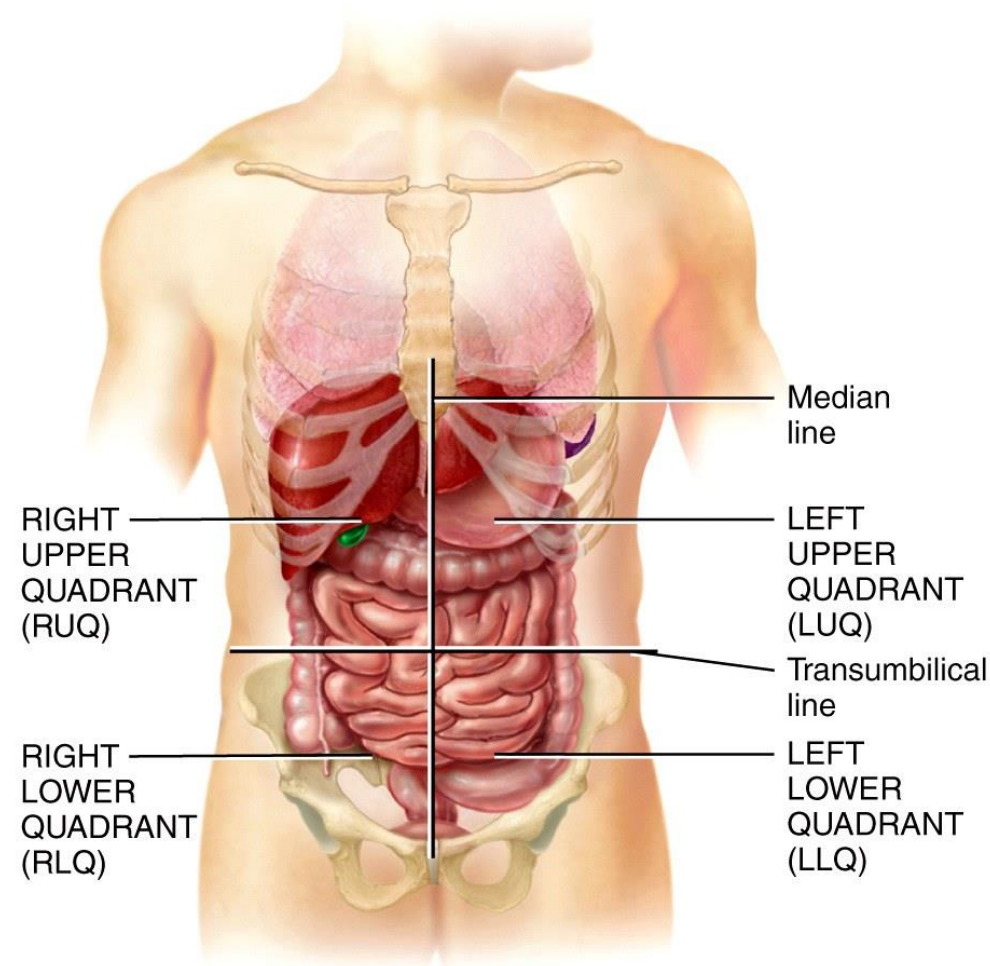
# The Liver: An Overview

- Gross Anatomy
  - Location
  - Shape, size
  - Relations
  - Blood Supply and drainage
  - Lymphatics
- Microscopic Anatomy
  - Special cells
  - Arrangement of parenchyma



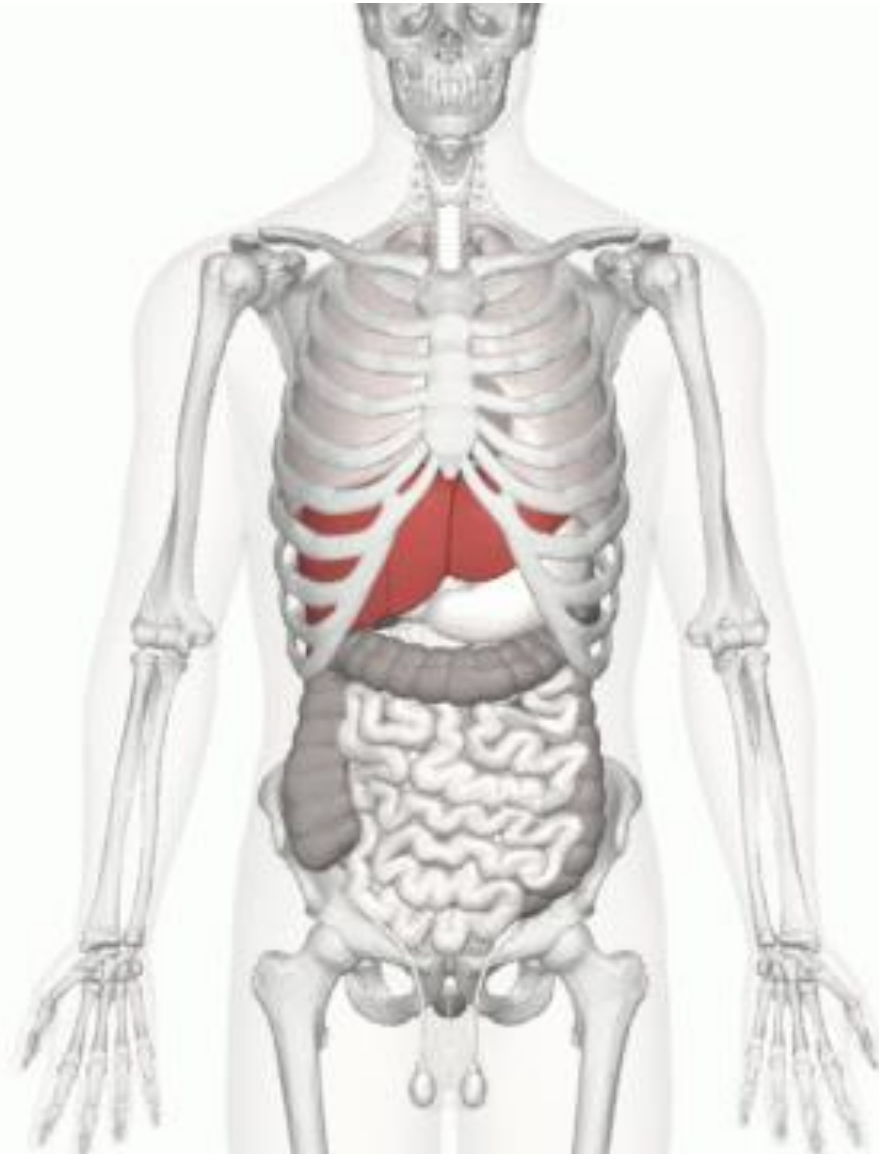
(a) Anterior view showing abdominopelvic regions

Copyright © 2005 John Wiley & Sons, Inc. All rights reserved.



(c) Anterior view showing location of abdominopelvic quadrants

Copyright © John Wiley & Sons, Inc. All rights reserved.

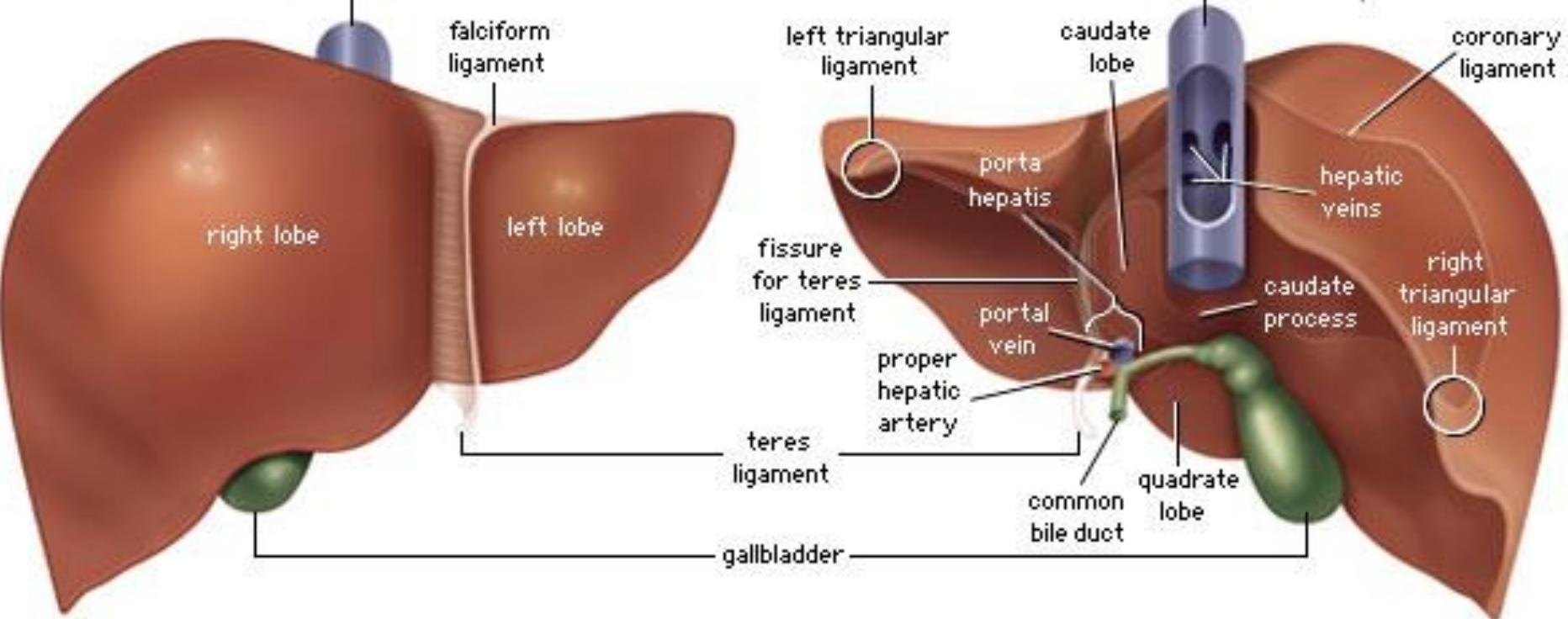


<http://lifesciencedb.jp/bp3d/info/userGuide/faq/credit.html>

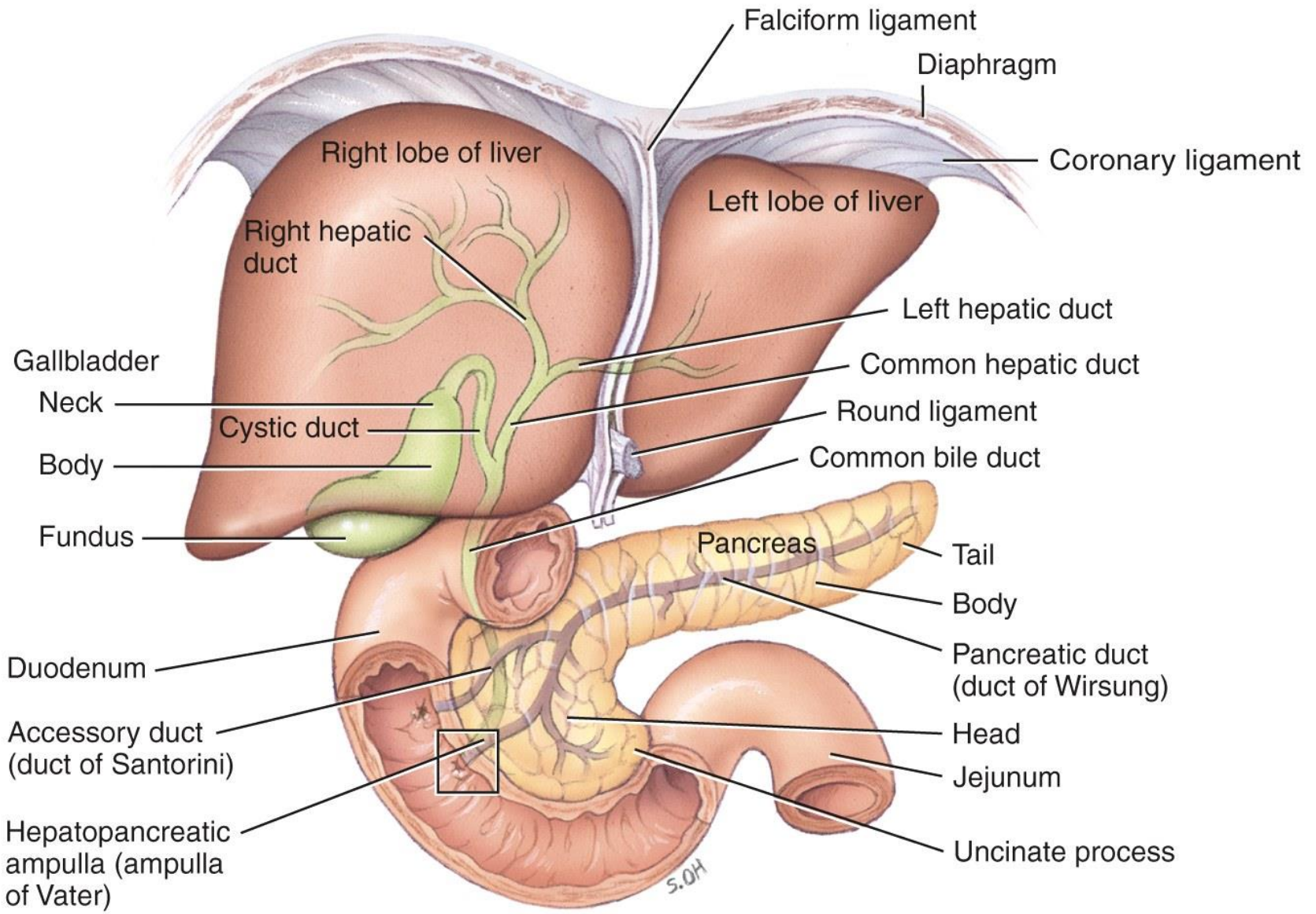


anterior view

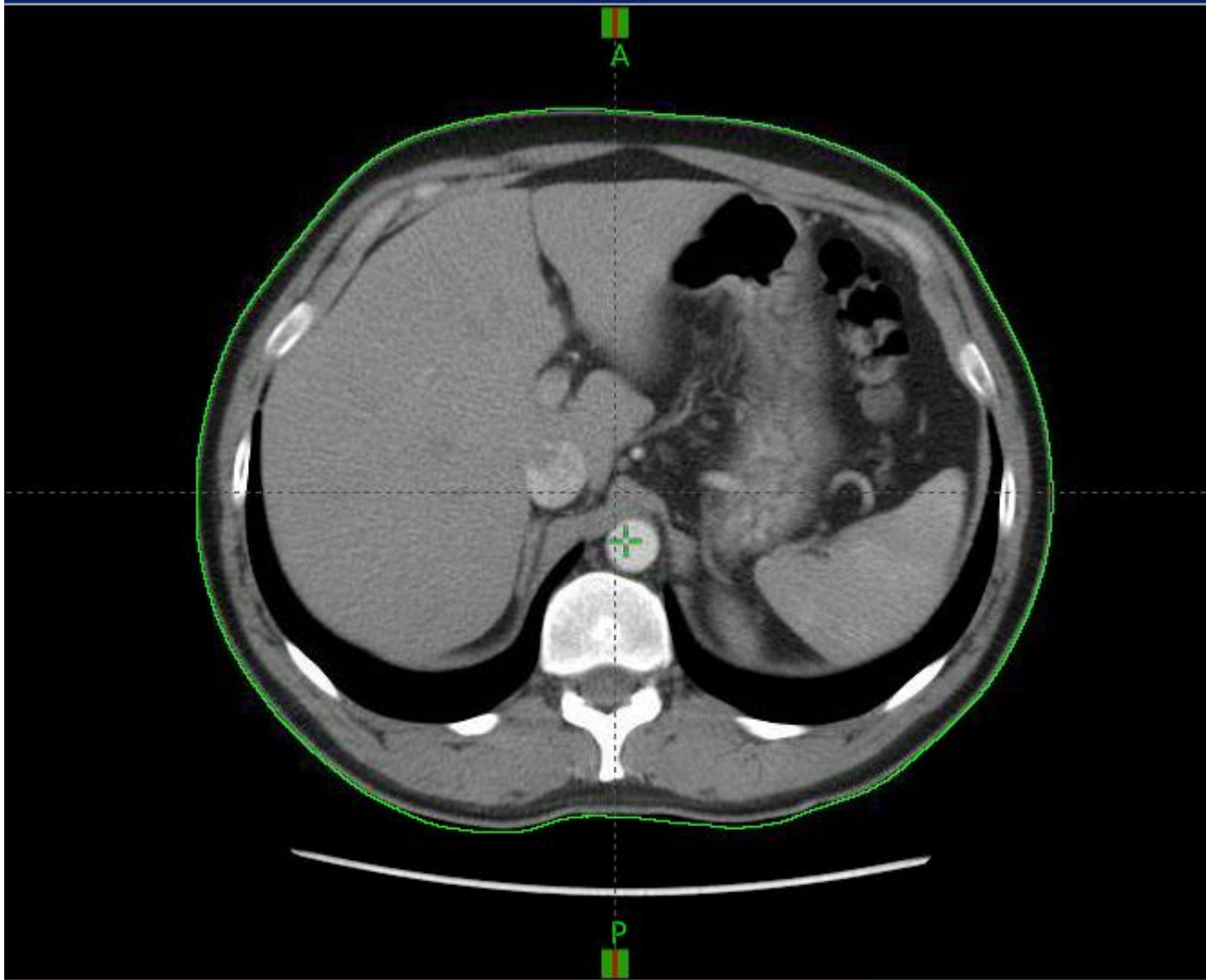
posterior view



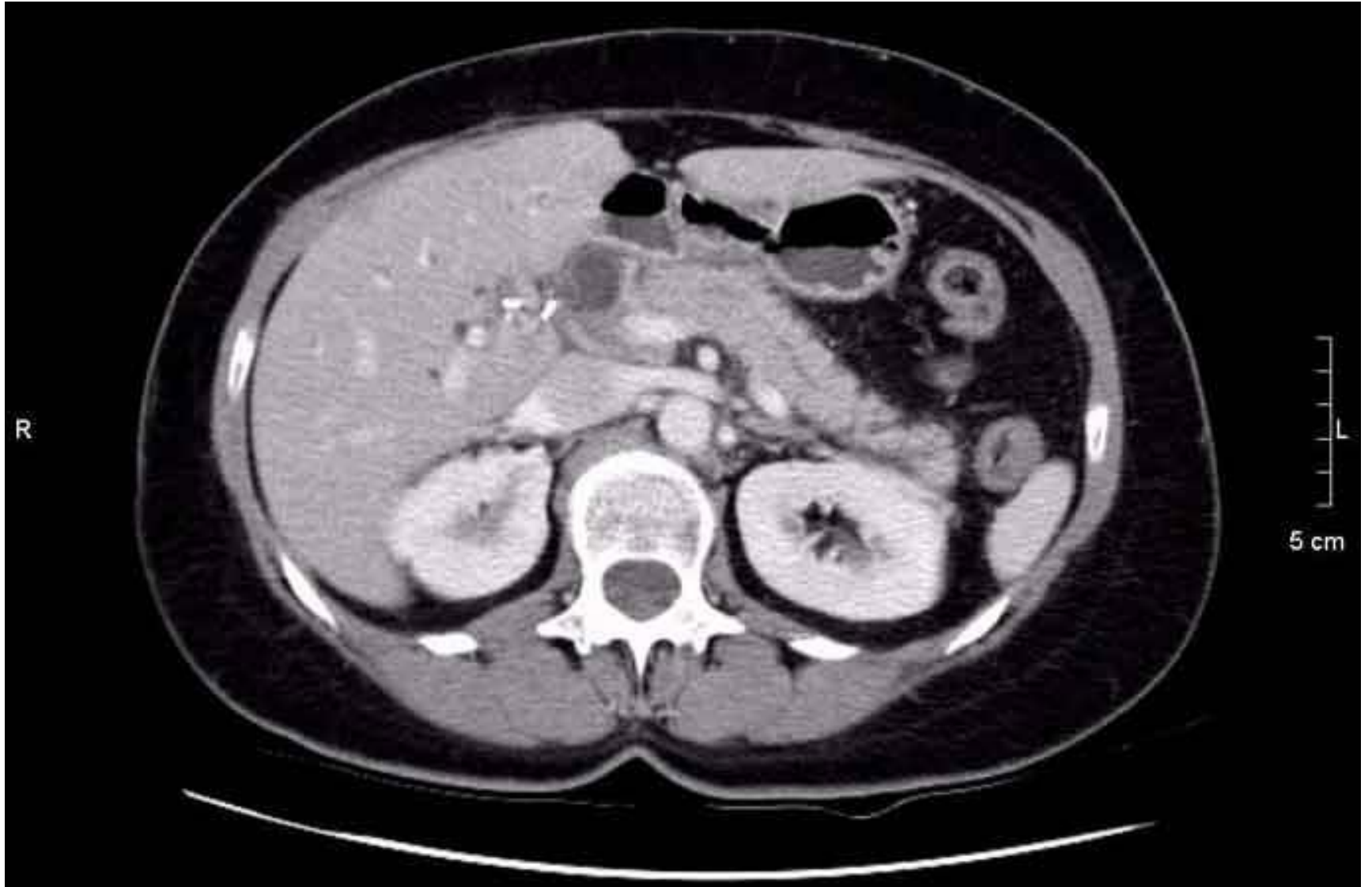
© 2003 Encyclopædia Britannica, Inc.

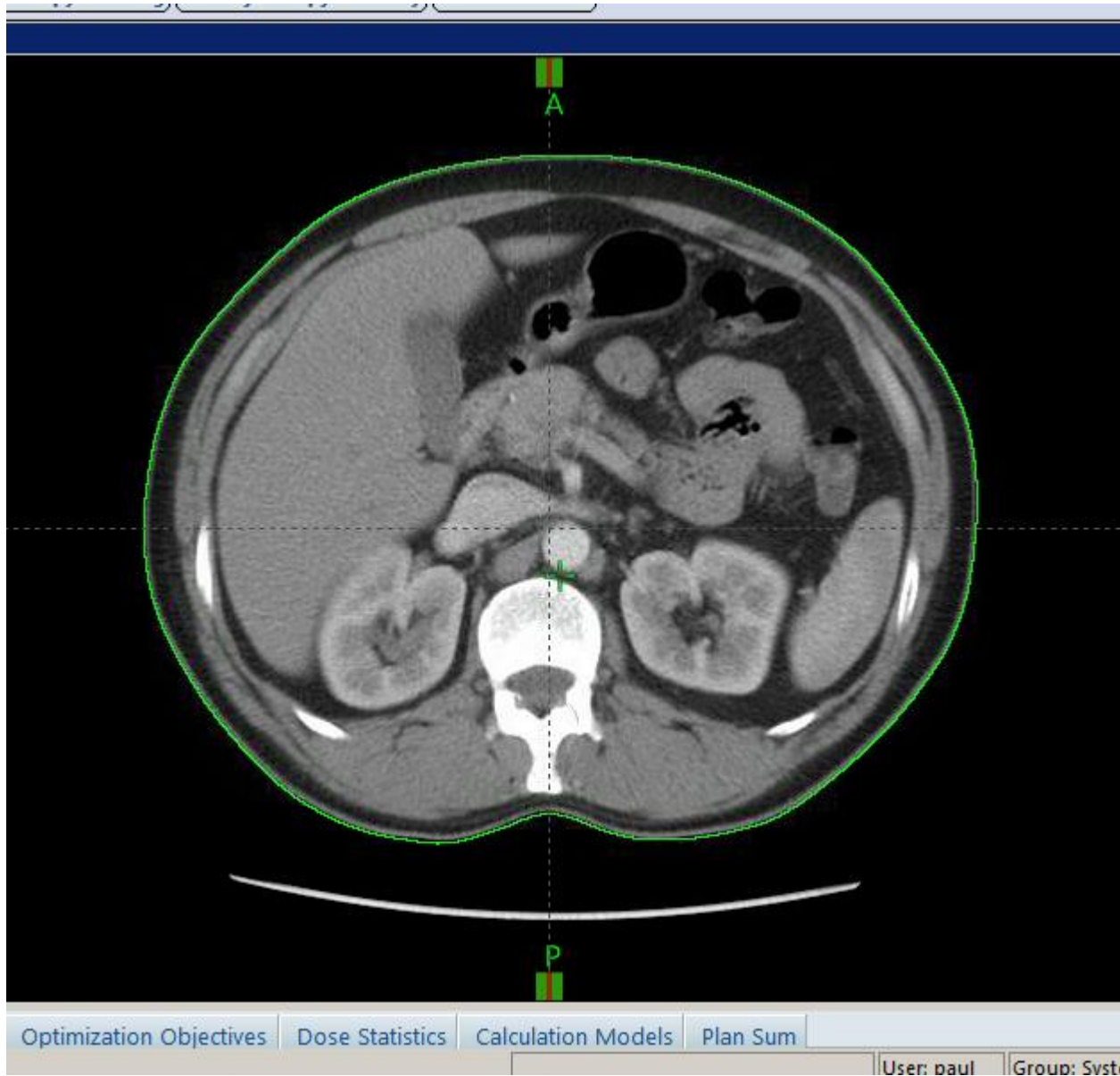


(a) Anterior view

















# Hepatic blood flow

- Liver receives blood from
- Hepatic artery carrying oxygenated blood
- Hepatic portal vein carrying deoxygenated blood with newly absorbed nutrients and possibly drugs, microbes or toxins from GI tract

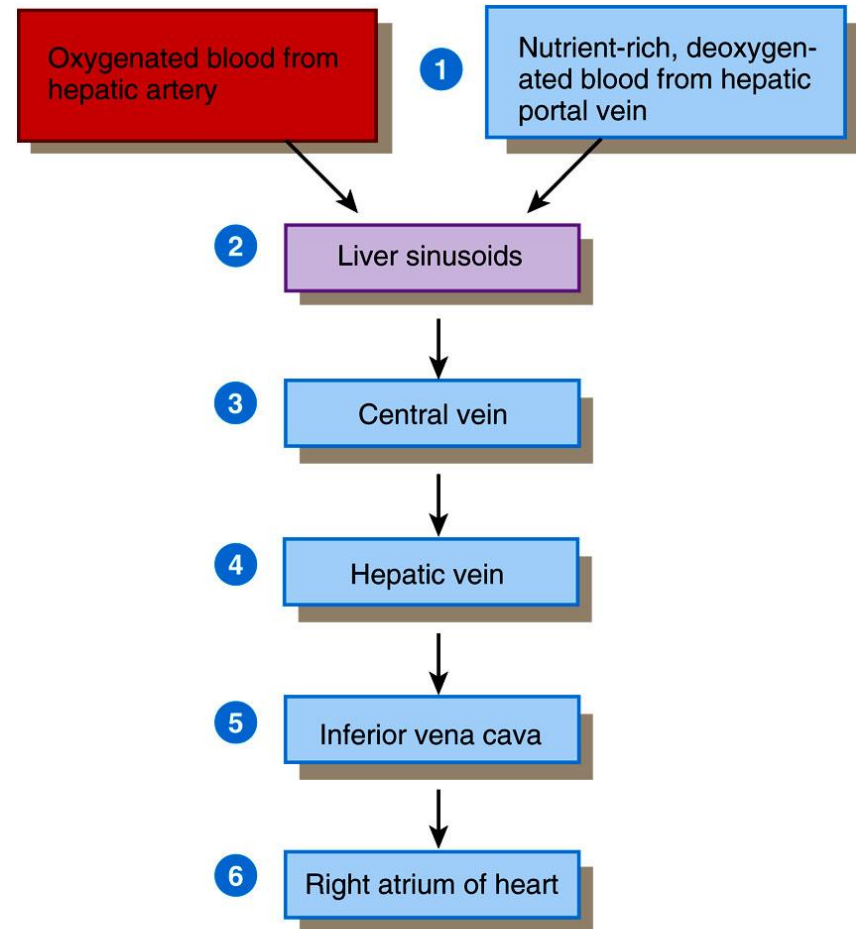
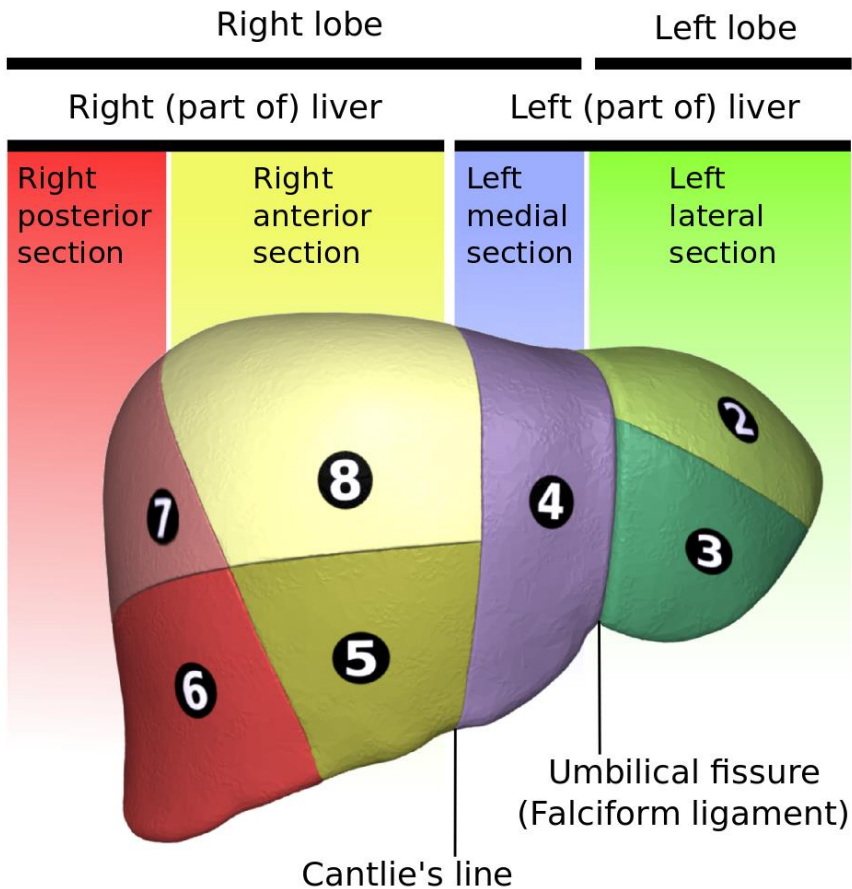
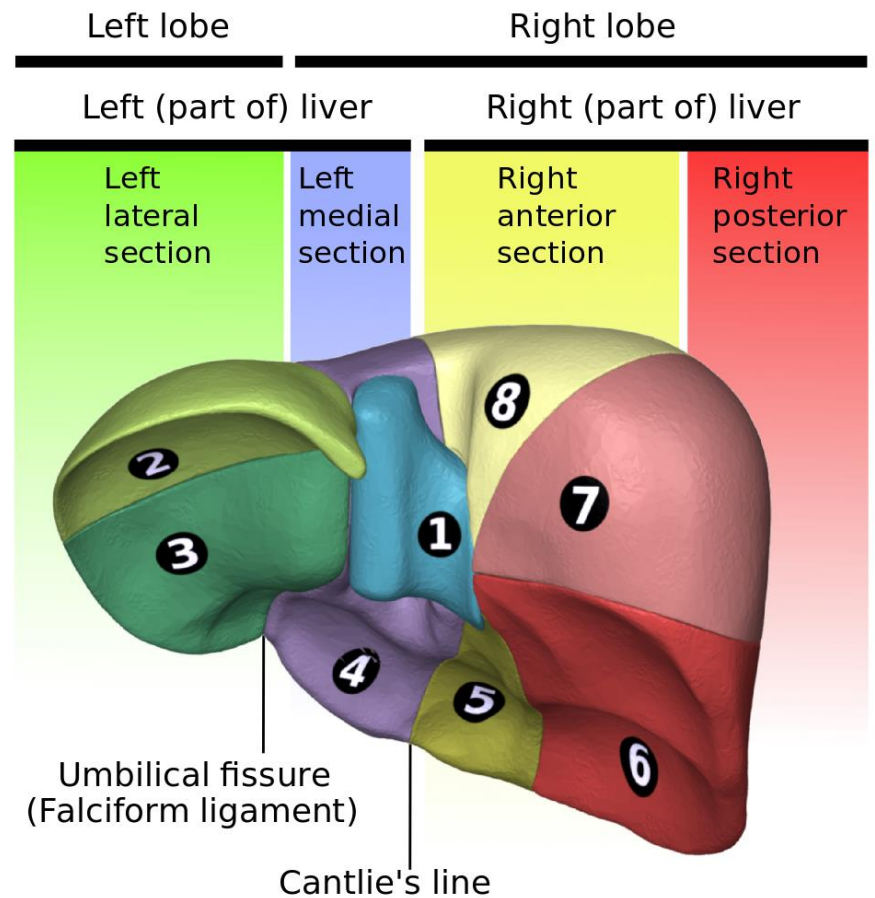


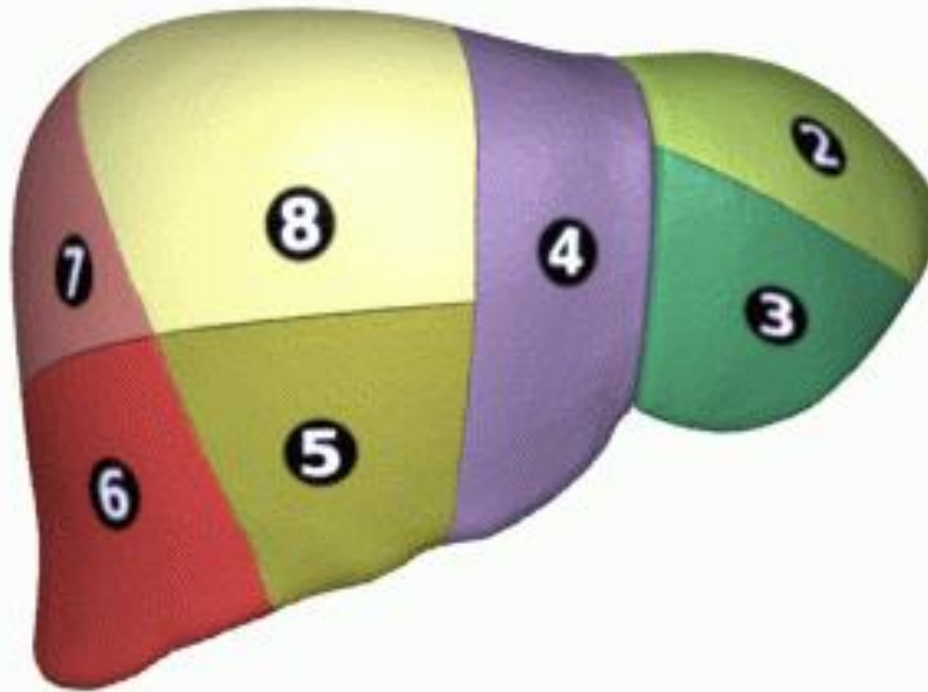
Figure 24.16 Tortora - PAP 12/e  
Copyright © John Wiley and Sons, Inc. All rights reserved.



Anterior view



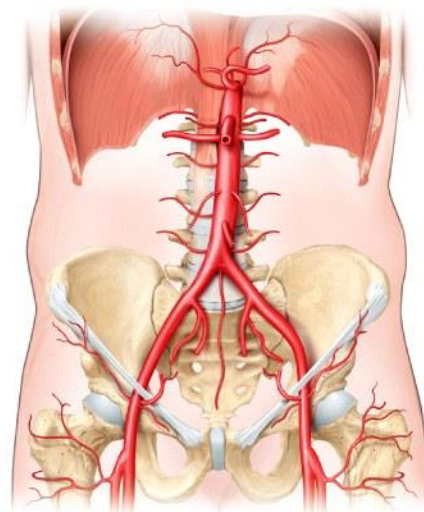
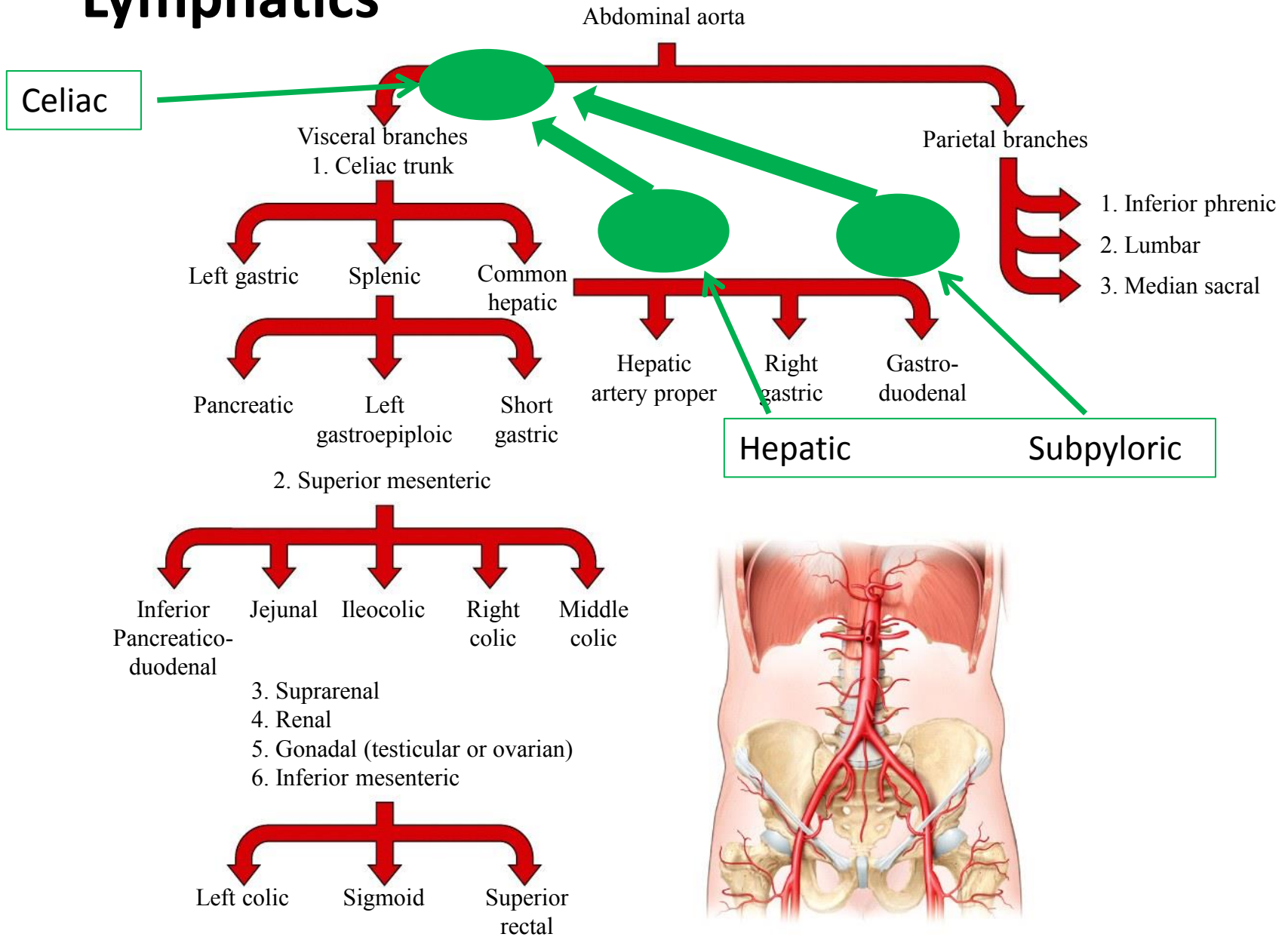
Posterior view



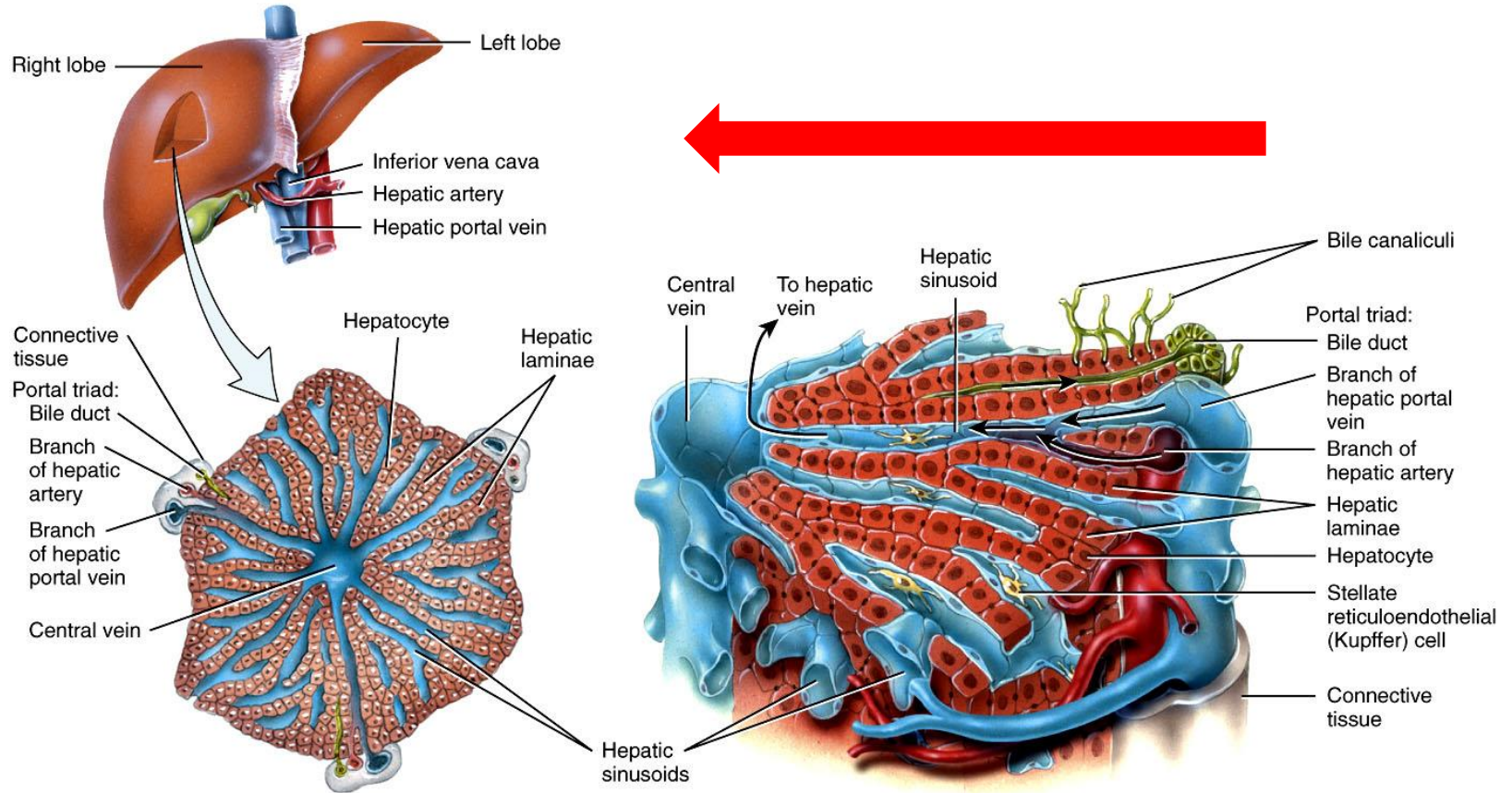
By Polygon data is generated by Database Center for Life Science(DBCLS)[2] - Polygon data is from BodyParts3D[1], CC BY-SA 2.1 jp, <https://commons.wikimedia.org/w/index.php?curid=45198447>



# Lymphatics



# Histology of the Liver



(a) Overview of histological components of liver

(b) Details of histological components of liver

Figure 24.15ab Tortora - PAP 12/e  
 Copyright © John Wiley and Sons, Inc. All rights reserved.

Thank you