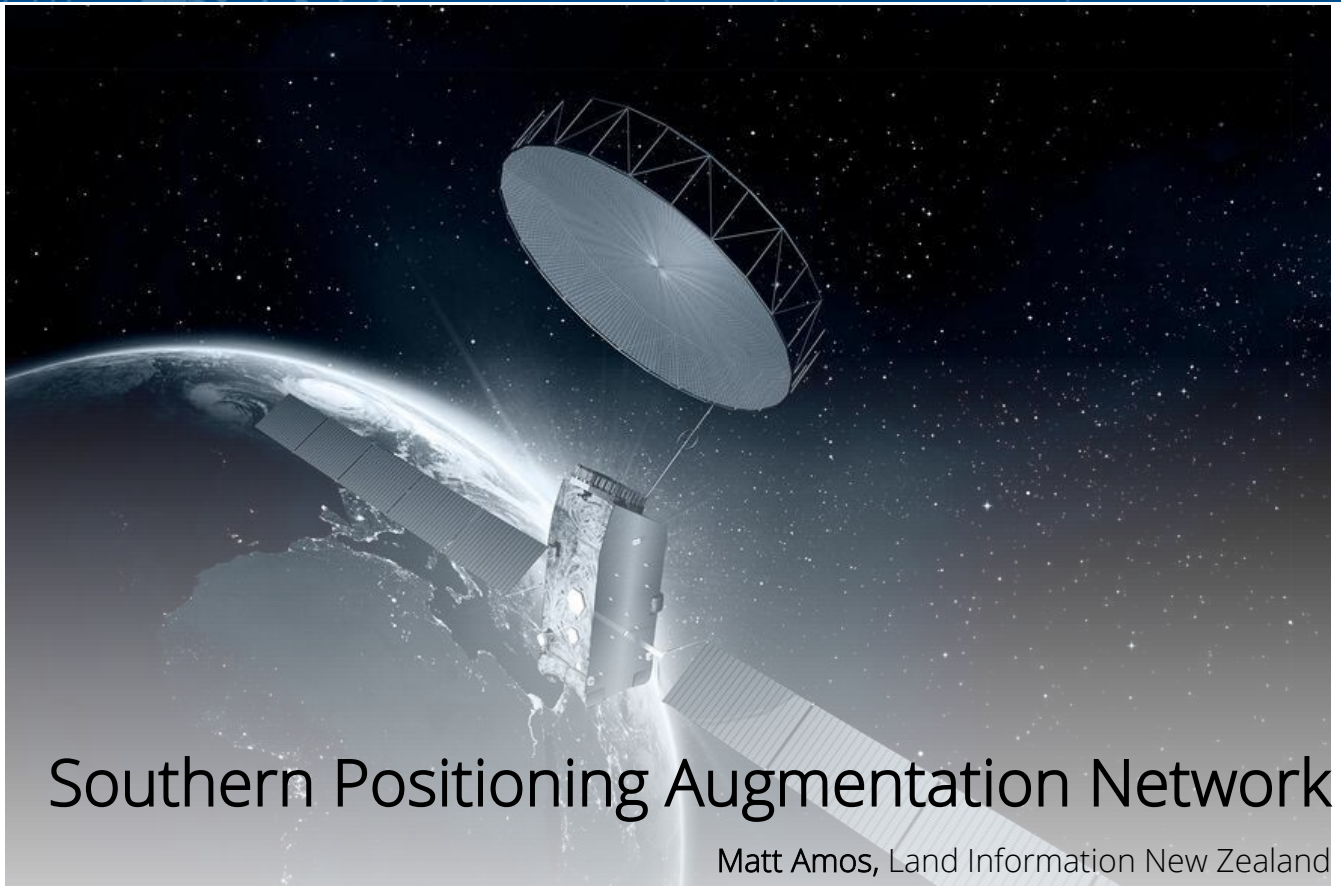


Te Kura Kairūri | School of Surveying

Lunchtime Seminar Series



Satellite Based Augmentation Systems (SBAS) have the potential to deliver precise positioning capability to the general public and enable emerging technology such as connected and automated vehicles, automated shipping and more efficient aircraft operations. The Southern Positioning Augmentation Network (SouthPAN) is the SBAS being implemented across New Zealand and Australia by LINZ and Geoscience Australia. SouthPAN will complement other PNT technologies and provide accurate, reliable and cost-effective positioning to users that otherwise do not have access to it. This talk will describe how SBAS works, overview some of the use cases for SouthPAN, give an update on the implementation of the service, and detail how it can be used now.



Thursday 7th May 2026 (12pm – 1pm)

OW1.01 Lecture Theatre | School of Surveying, 133 Union Street East

OR Join remotely: <https://otago.zoom.us/> (ID: 990 5863 2248, P/W: 133133)