

Will New Zealand kelp-associated invertebrates survive in a warmer Antarctica?

Frances Perry – MSc Marine Science



What?

- Diverse invertebrate species inhabit kelp
- They can survive long rafting journeys at sea

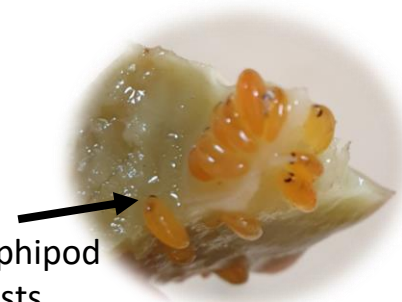
Why?

- Southern Bull Kelp (*Durvillaea*) is rafting to Antarctica from the sub-Antarctic and likely NZ
- Antarctica is warming, with the future climate potentially suitable for kelp



How?

- Determine **holdfast conditions** in Dunedin: temperature loggers in kelp
- **Animal survival** within the lab
- **Physiological experiments** across a thermal gradient between current NZ and future Antarctic: respiration, excretion, reproduction and survival



Parawaldeckia kidderi – an amphipod commonly found in kelp holdfasts