

# *The visibility of smoking outside bars and cafés: New methods*

Oceania Conference October 2013

**George Thomson, Amber L. Pearson\*, Daniel Nutsford,  
Shanika Jayasinghe, Nick Wilson**

Department of Public Health,  
University of Otago, Wellington, New Zealand



**Aim:** To observe and map the visibility of smoking occurring outside bars/cafés in Wellington CBD

# Methods

## ■ Compilation of spatial data

- All building footprints in the CBD
- All public outdoor spaces (eg roads, footpaths)
- 70 bars/cafés with pavement leases

## □ Observational data

- Lit cigarettes observed at 14 bar/cafés
- Averages extrapolated to remaining leases

## □ Viewshed analyses

- Calculates visual exposure for each 1m x 1m cell across CBD

Base map of Wellington CBD



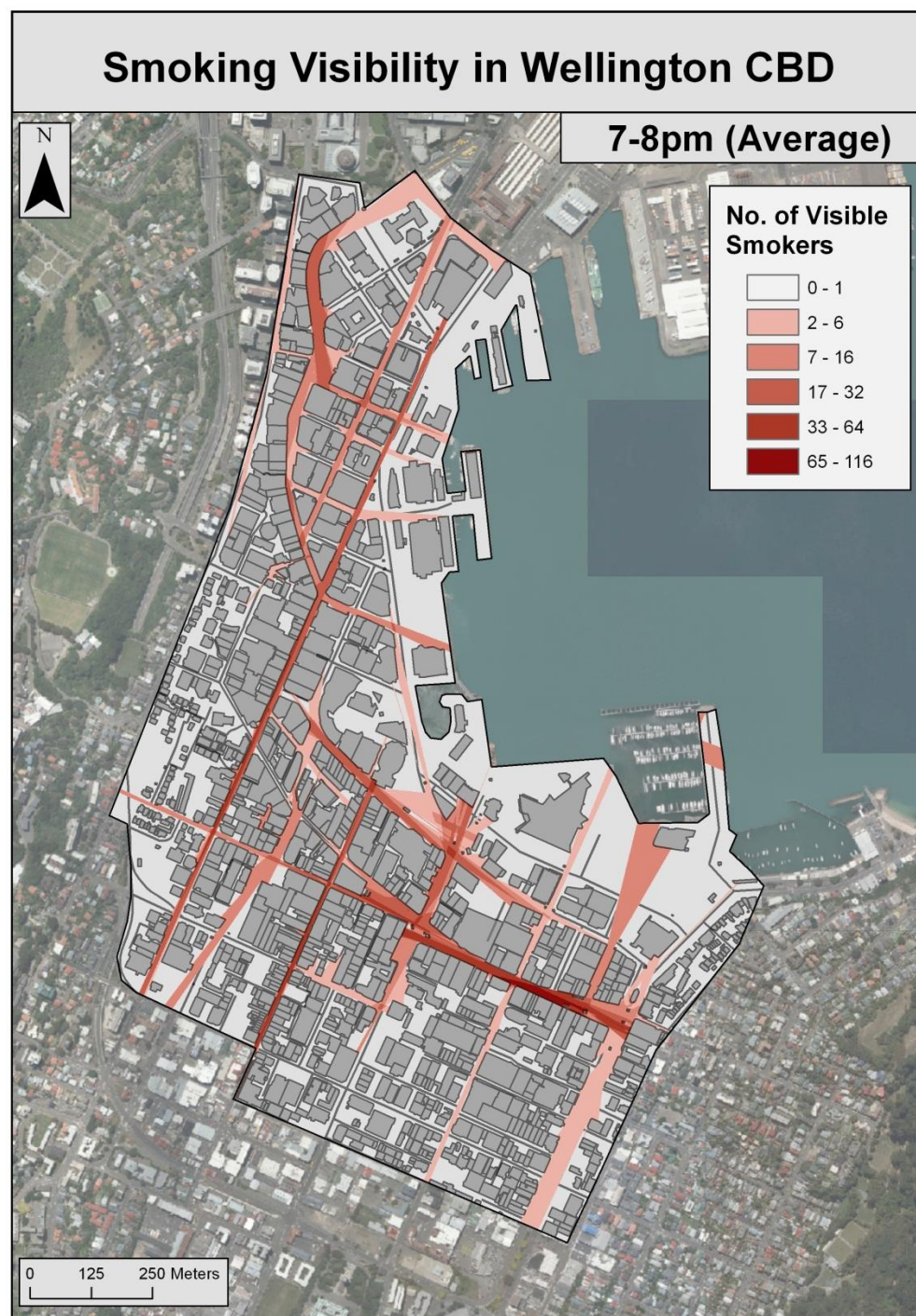
# RESULTS

The observations indicated:

- Point smoking prevalence: Midday 9%; evening 19%
- Range 0-116 smokers
- Large differences between day and evening smoking

The analysis of smoking visibility indicated:

- The primary shopping streets have the highest visibility of smoking at pavement leases, particularly in the evening



# Discussion

- With geographic techniques, it is possible to study the extent to which outdoor smoking on pavements around bars and cafés can be seen
- The extent of smoking may normalise smoking in this downtown area
- Options include:
  - ◆ Smokefree areas
  - ◆ Smokefree streets

