



MUDFLAT MYSTERIES

What lives on the muddy shore?

At first glance mudflats look devoid of life, but a good detective can find evidence of who lives there.

Who do you think left these tell-tale signs?

INSTRUCTIONS: Make your own Mudflat Mysteries game! Print out these pages in colour on A4 paper (or A3 if you want larger cards). Trim away the white edges. Fold the paper in half so the photo with text is on one side and the photo without is on the reverse. Laminate each folded sheet to hold it together and protect it. Lay the squares out on the floor (text side down). Students use their marine detective skills to work out what animal or plant has made these mysterious marks or signs. This could be a group discussion activity, or students could work individually and write their answers down (each photo is numbered). When ready to reveal the answers, just turn the cards.

1 Cockle

Use their muscular foot to plough through mud.

1



2 Bamboo worm



Leave little chimneys
of sediment at one end of
their burrow.



2

3 Mud crab



Use their front nippers to shovel mud out of their burrow.



3

4 Mantis shrimp



Burrow entrance is a very clean hole in the mud.



5 Ghost shrimp

Burrow entrance looks like a crater and exit like a volcano.

5

6 Wedge shell

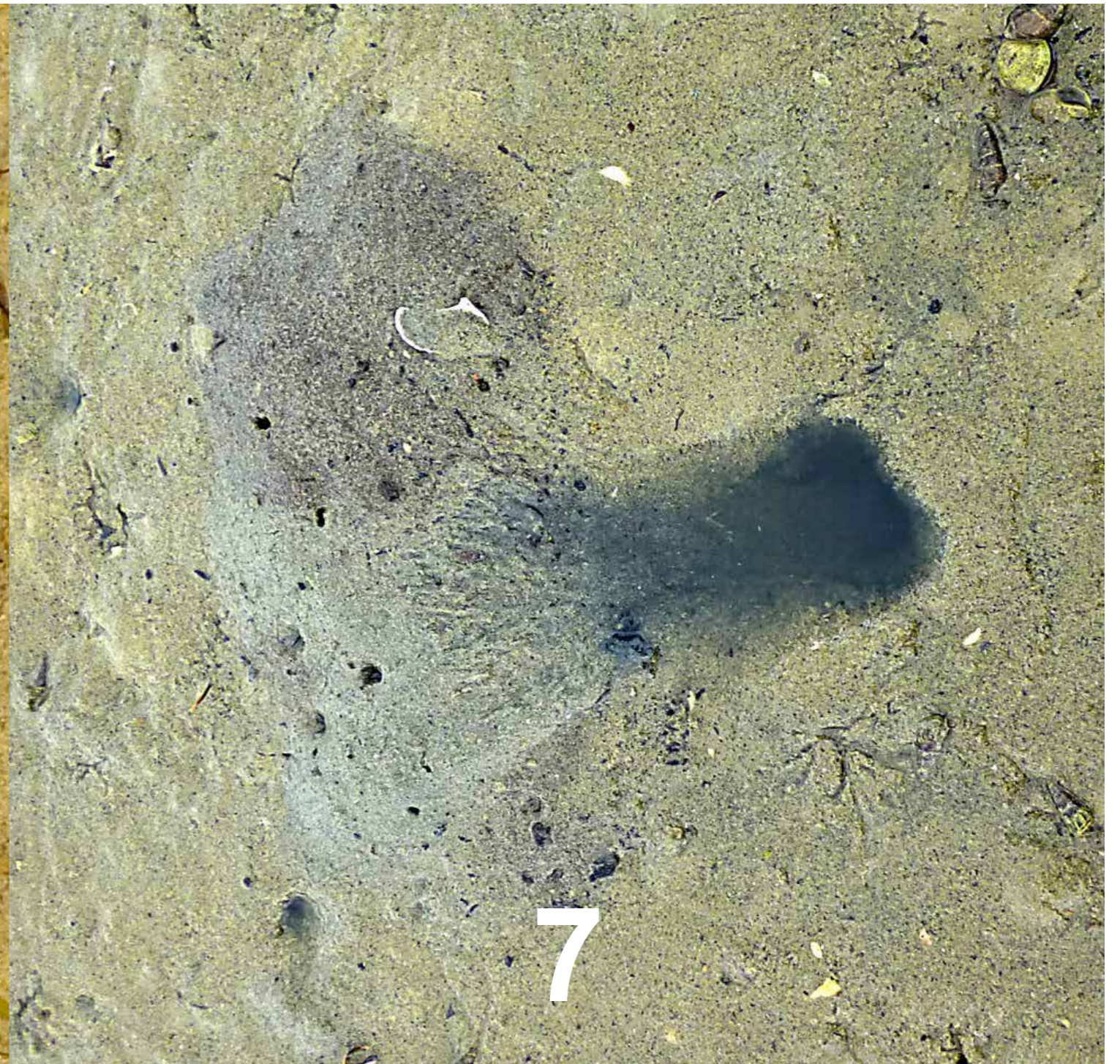
Feeding marks are made by long siphons that suck food particles from the surface.



7 Stalk eyed crab



Kicks sediment out of its burrow.



7

8 Lug worm



Ingest sediment and expel it out of one end of their burrow.



9 Mud snail

Turn in a circle while depositing their eggs in layers of sand.

9



10 Black Swan



Swans and ducks feed on mudflats and leave large poos.



11 Amphipod



Form small bumps over the surface of the mud.



11

12 Sea Lettuce



Bleaches white when exposed to the sun for long periods.



12