

Responsiveness to Māori – it important/relevant

The screenshot shows a web browser displaying the 'He Korowai Oranga framework' page. The browser's address bar shows the URL 'www.health.govt.nz/our-work/populations/maori-health/he-korowai-oranga'. The page features a navigation menu on the left with links to various resources. The main content area is titled 'He Korowai Oranga framework' and includes a sub-heading 'The components of the framework are shown in the interactive pyramid below.' The pyramid diagram is a large triangle composed of smaller triangles, organized into four horizontal layers. The layers are labeled on the left side of the pyramid: 'Pathways' at the bottom, 'Key threads' above it, 'Directions' above that, and 'Elements' at the top. The 'Overall aim' is represented by a single triangle at the very top. The 'Elements' layer consists of three triangles: 'Pae Ora Healthy futures for Māori' (top), 'Whānau Ora Healthy families' (middle), and 'Mauri Ora Healthy individuals' (bottom). The 'Directions' layer consists of two triangles: 'Māori aspirations and contributions' (left) and 'Crown aspirations and contributions' (right). The 'Key threads' layer consists of three triangles: 'Rangatiratanga' (left), 'Building on the gains' (middle), and 'Equity' (right). The 'Pathways' layer consists of four triangles: 'Whānau, hapū, iwi, community development' (left), 'Māori participation' (middle-left), 'Effective service delivery' (middle-right), and 'Working across sectors' (right). Below the pyramid, the text reads 'A living, web-based strategy' followed by a paragraph explaining that the framework is a living strategy that will be updated over time. A 'Back to top' button is located in the bottom right corner of the page.

He Korowai Oranga framework

The components of the framework are shown in the interactive pyramid below.

Overall aim

- Pae Ora Healthy futures for Māori

Elements

- Whānau Ora Healthy families
- Wai Ora Healthy environments
- Mauri Ora Healthy individuals

Directions

- Māori aspirations and contributions
- Crown aspirations and contributions

Key threads

- Rangatiratanga
- Building on the gains
- Equity

Pathways

- Whānau, hapū, iwi, community development
- Māori participation
- Effective service delivery
- Working across sectors

A living, web-based strategy

He Korowai Oranga is a living strategy. Updating this website with evidence, data and case studies will be integral activities in its second decade. Over time, this web-based strategy will become a 'hub of innovation' for Māori health.

You can access information on the aim, elements, key threads and pathways of the He Korowai Oranga framework using the diagram above. Over time, this information will be updated.

[Back to top](#)

There is a wealth of information the MOH website

The screenshot shows a web browser window displaying the Ministry of Health website. The browser's address bar shows the URL www.health.govt.nz/our-work/populations/maori-health. The website header features the Ministry of Health logo (MANATŪ HAORA) and a search bar. A navigation menu includes links for 'Your health', 'NZ health system', 'Our work', 'Health statistics', 'Publications', 'News', and 'About us'. The main content area is titled 'Māori health' and includes a sidebar with a list of sub-topics: He Korowai Oranga, Māori health providers, Hauora Māori Scholarships, Māori health models, Māori Health Plans, Profiles and Health Needs Assessments, National Kaitiaki Group, Rongoā Māori, Tatau Kahukura: Māori health statistics, Whānau Ora programme, Case studies, Publications, and Links. The main text describes the Ministry's role as the Government's advisor for health and disability, setting the direction for Māori health and guiding the sector to increase access, achieve equity, and improve outcomes for Māori. A right-hand sidebar contains sections for 'Ngā Kōrero' (news) and 'Related areas'.

Jobs / Contact us / Site map / Accessibility

MINISTRY OF HEALTH
MANATŪ HAORA

Search

Your health | NZ health system | **Our work** | Health statistics | Publications | News | About us

Home > Our work > Populations > Māori health

Māori health

- He Korowai Oranga
- Māori health providers
- Hauora Māori Scholarships
- Māori health models
- Māori Health Plans, Profiles and Health Needs Assessments
- National Kaitiaki Group
- Rongoā Māori
- Tatau Kahukura: Māori health statistics
- Whānau Ora programme
- Case studies
- Publications
- Links

Māori health

As the Government's advisor for health and disability, the Ministry is charged with setting the direction for Māori health and guiding the sector as we work to increase access, achieve equity and improve outcomes for Māori.

In this section

He Korowai Oranga
Information on He Korowai Oranga: Māori Health Strategy, which sets out Māori health objectives, and how these objectives are being implemented. [Read more](#)

Māori health providers
Find out about the Māori Provider Development Scheme, the Māori Health Innovation Fund and accessing the Māori health provider directory. [Read more](#)

Hauora Māori Scholarships 2016
Hauora Māori Scholarships provide financial assistance to students who are undertaking or completing an accredited course in health and disability studies (level seven or above). [Read more](#)

Māori health models
The Māori philosophy towards health is based on a wellness or holistic health

Ngā Kōrero

Get the latest news from the Māori Health Business Unit with the [Ngā Kōrero newsletter](#).

Related areas

> Māori health data and stats

HRC expectations

- Identify Māori interests (“responsiveness to
- Line of sight (design → delivery)
- Analysis of needs/opportunities etc. is specific
 - = who, what, where, when, how, why
 - = link relevant national and Māori strategies
 - = identify contributions/innovations
- Respond to: VM outcomes, relevant ‘things’
- Show relevance to Māori world views, and context

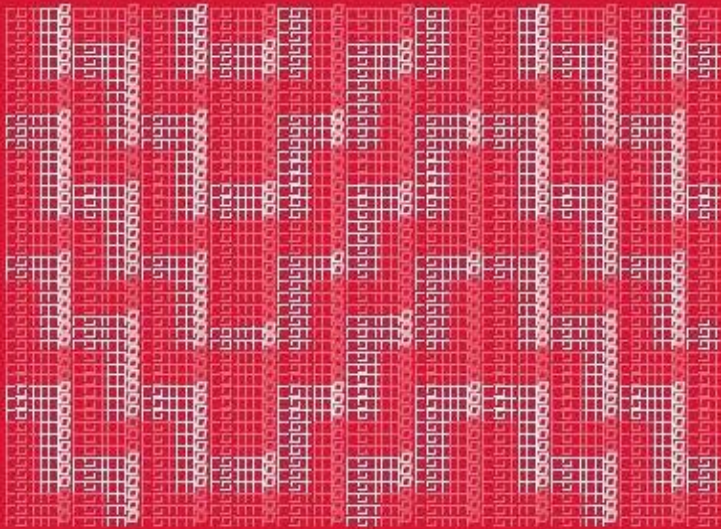


RESEARCH
SCIENCE
TECHNOLOGY



Vision Mātauranga

Unlocking the Innovation Potential of Māori
Knowledge, Resources and People



Vision Mātauranga Policy document



Vision Mātauranga Policy Themes

- **Indigenous Innovation** - contributing to economic growth through distinctive research and development
- **Taiao / Environment** - achieving environmental sustainability through iwi and hapū relationships with land and sea
- **Hauora/Health** - improving health and social wellbeing
- **Mātauranga** - exploring indigenous knowledge and science and innovation



Integrating VM in Proposal

Clear identification and inclusion of the following is key:

- Appropriate Māori voices/expertise
- Rationale for approach to research wrt Māori
- Engagement methods/principles
- Specific and agreed Māori roles & responsibilities
- Commitments e.g decision making, IP

Resourcing and support must be addressed

Identify risks (incl. management & mitigation)



Vision Mātauranga Help/Advice

- Submit your application to the NTRCC asap.
- Discuss your project with your Research Advisor.
- Contact:

Mark Brunton, Research Manager, OMD

mark.brunton@otago.ac.nz ph 03 479 8738

AJ Woodhouse, Research Advisor, R&E

aj.woodhouse@otago.ac.nz ph 03 479 7717