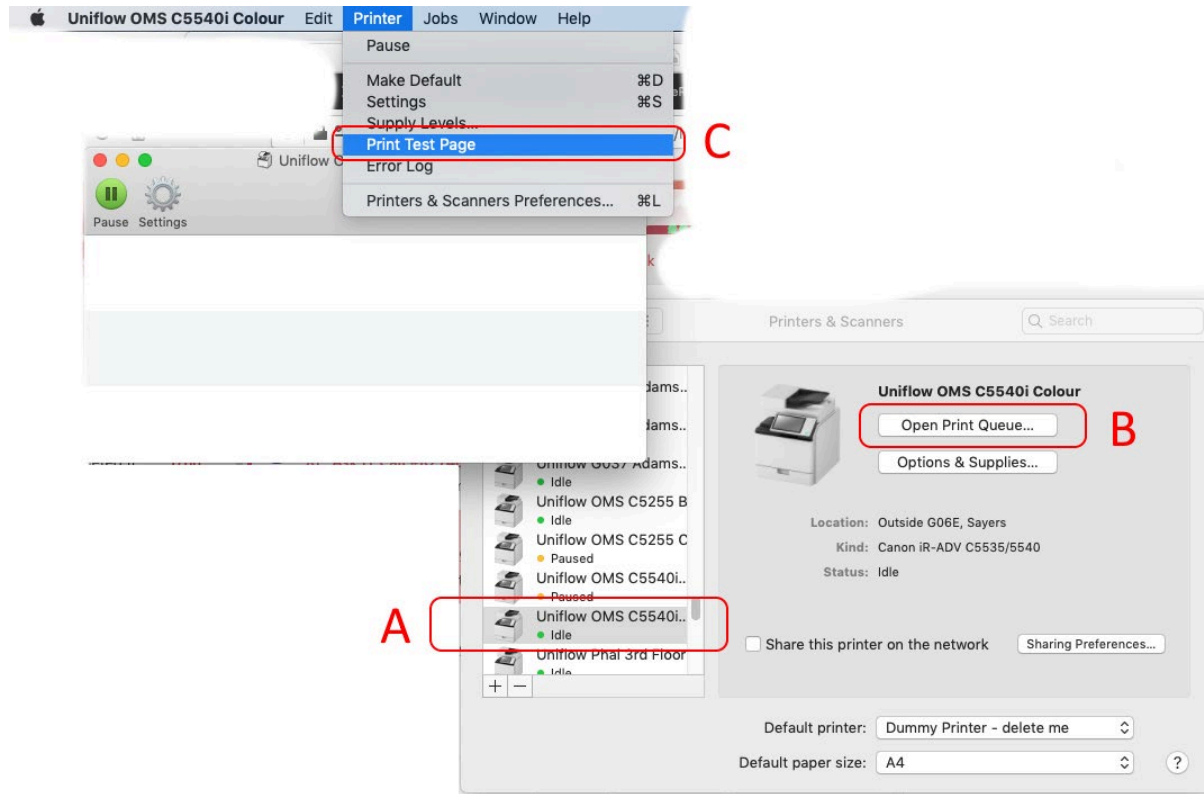


Authentication for Uniflow for Mac OS

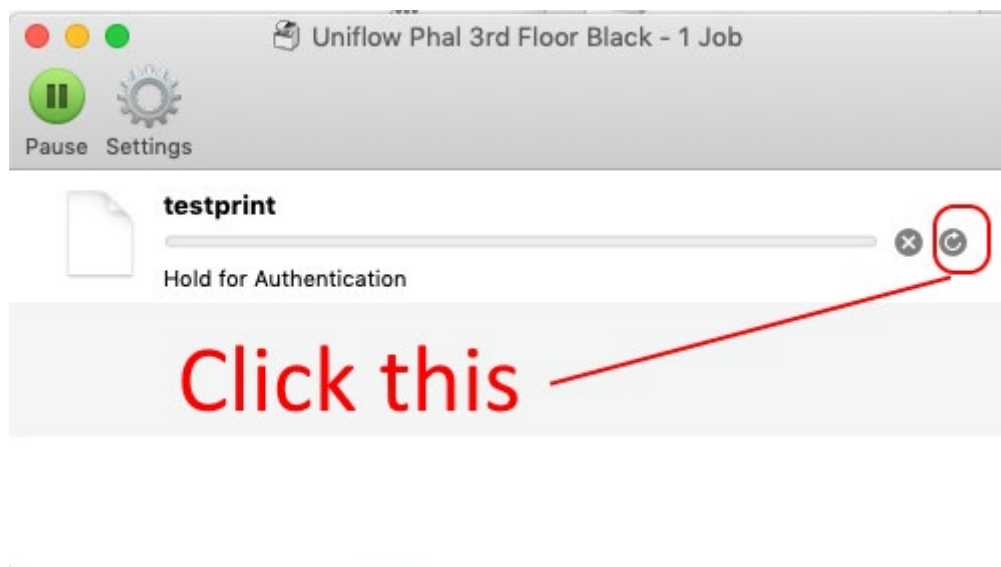
1) Select the printer to authenticate to (A)

Click **Open Print Queue...** (B)

Choose **Print Test Page** from the **Printer** menu (C)



2) The test page will get stuck, "Hold for Authentication", click the Reload icon as shown below

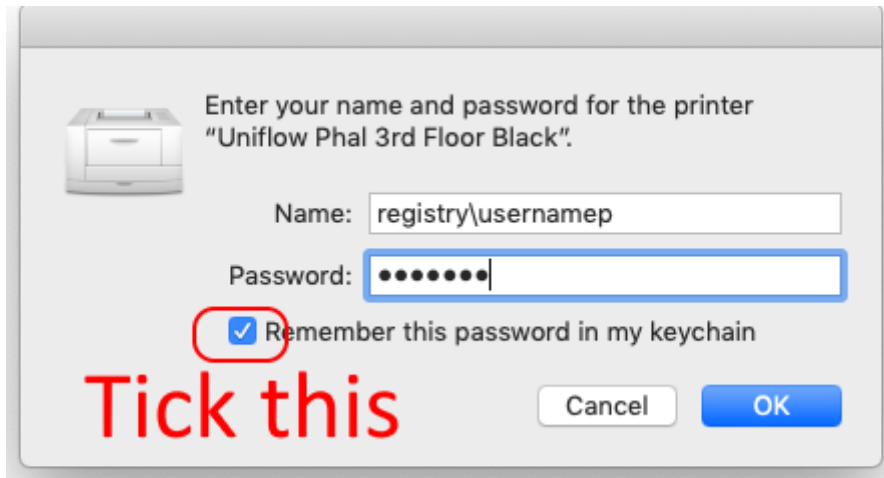


3) When prompted enter your university username and password

For Staff: registry\staffusername and password

For Students: student\studentusername and password

Check the box "Remember this password in my keychain"

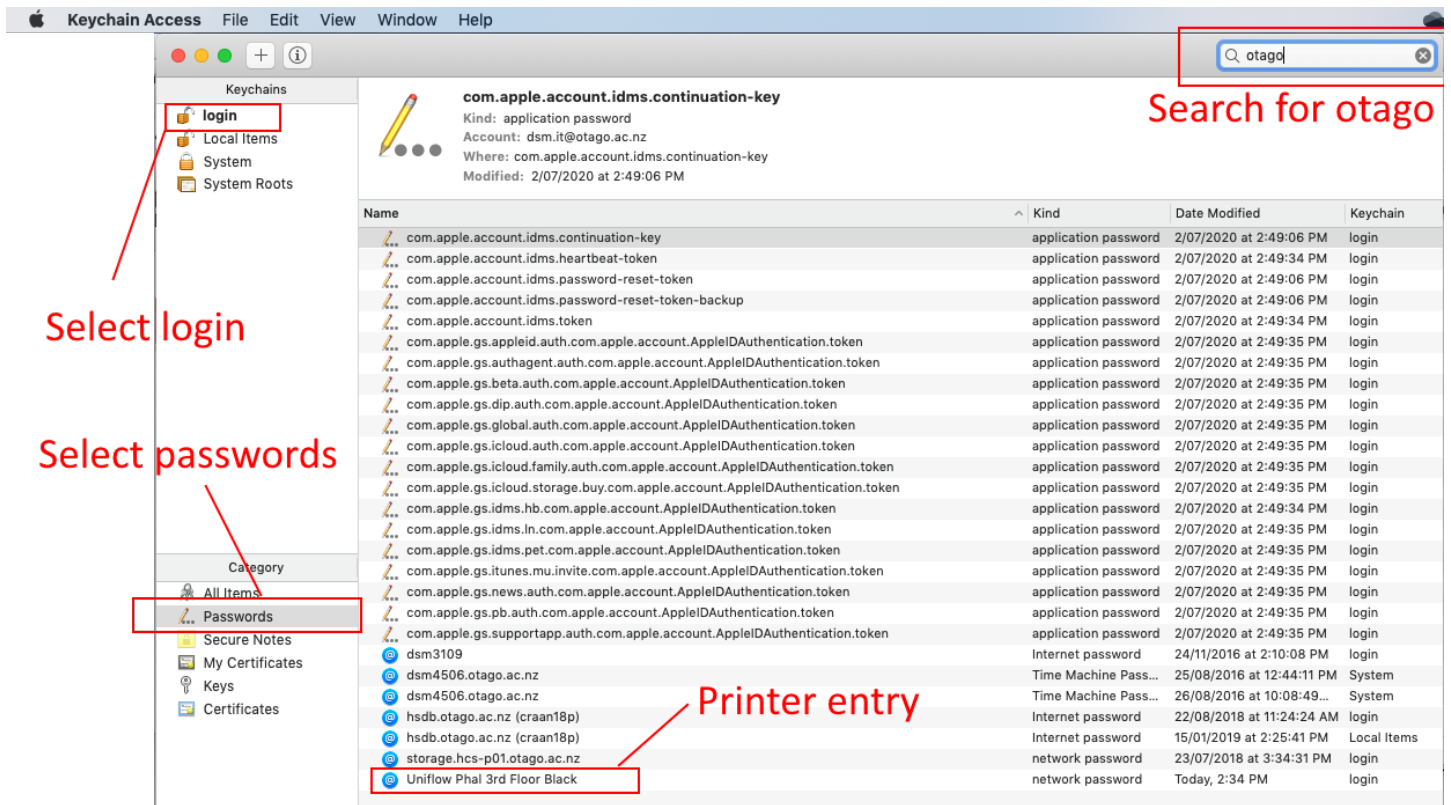


Wrong password stuck in Keychain (either delete entry or update password and/or username) - Optional for fixing issues where authentication fails.

1) The Keychain Access app is located in the Utilities folder which is in the Applications folder

Select the keychain named **login** and the category of **Passwords**, search for **otago**

Double-click any entries that look like a uniflow printer/server



2) An entry for uniflow with have the server address of smb://unf-rpsd-p02.registry.otago.

You can check "Show password" and update the password to the correct one and/or fix username

Or close this and back at the previous screen select the entry and delete the "bad" entry from the keychain -choose "delete" from the Edit menu of Keychain access.

