

## How to connect to the eduroam Wi-Fi service at another location using Mac OS

These instructions will help University of Otago staff and students connect to the eduroam wireless (Wi-Fi) service at participating locations. The default eduroam WLAN settings for your laptop are:

Eduroam Wi-Fi Security Configuration	
SSID	eduroam
Security	WPA2-Enterprise (802.1X/EAP)
Authentication Method	PEAP-MSCHAPv2
Encryption Type	AES-CCMP
Login User Account	<b>Staff:</b> username@registry.otago.ac.nz (username format is e.g. doejo91p not first and last name e.g. john.doe) <b>Students:</b> username@student.otago.ac.nz
Validate Server Certificate	AddTrust External CA Root <b>OR</b> AusCERTServerCA.crt

The Trusted Root CA certificate can be downloaded here if required:

<https://www.quovadisglobal.com/download-roots-crl/>

**Select:** QuoVadis Root CA2  
SHA1 - RSA - 4096  
Download as DER



This section provides step-by-step instructions to configure your eduroam WLAN settings.

- Once you are at the eduroam-participating location, click on your **Wi-Fi** icon (wireless fan) in the menu bar, and click on **eduroam** from the available networks.



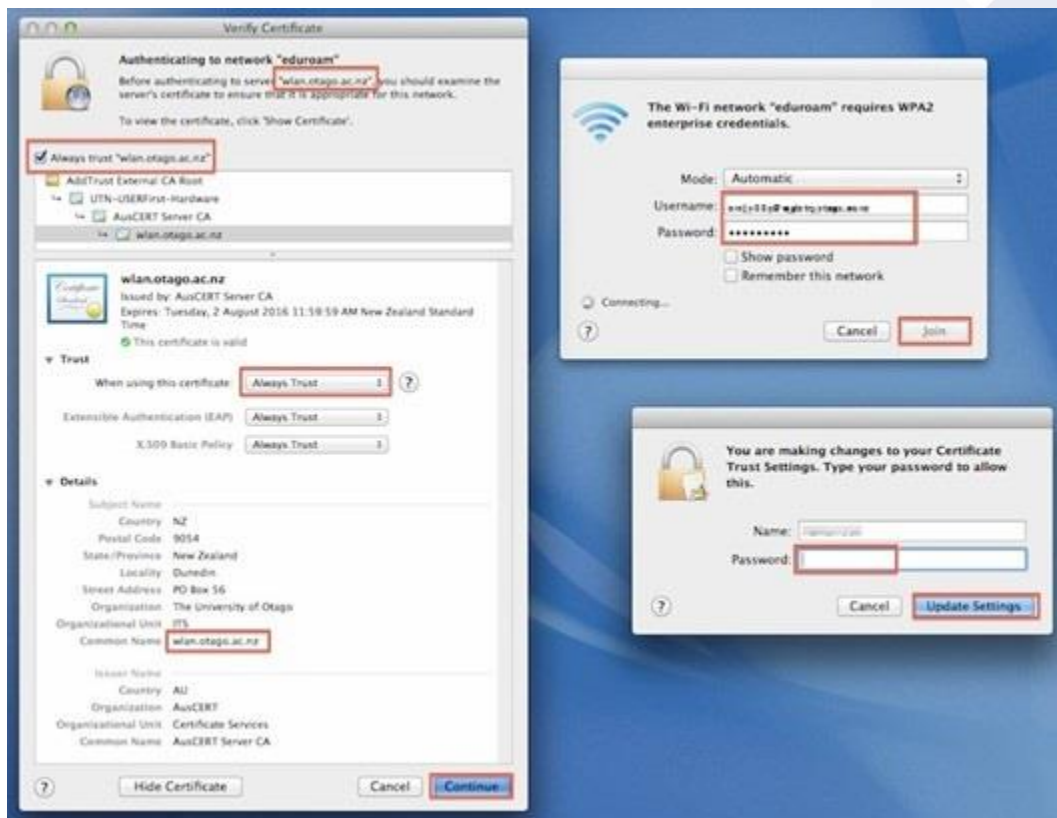
- You will be prompted to supply WPA2 enterprise credentials:
  - Mode:** should be **Automatic**
  - Enter your University of Otago username (**Staff:** username@registry.otago.ac.nz  
**Students:** username@student.otago.ac.nz) and password.



Click **Join**.

3. When you are asked about **Authenticating to network "eduroam"**, make sure that the server authenticating is **wlan.otago.ac.nz** (the screenshot will help):

- Check the **Always trust "wlan.otago.ac.nz"** box.
- From the drop-down menu for **When using this certificate**, choose **Always Trust**
- The **Certificate Name** should show as **wlan.otago.ac.nz**
- Enter your password to allow these changes and click the **Update Settings** button



4. In your Wi-Fi menu, eduroam should now be connected (ticked).



Open your web browser and go to <https://www.otago.ac.nz> to confirm that you are connected to the eduroam network. If this step fails, please reconnect to the eduroam wireless network by disabling then reenabling your Wi-Fi. You will be asked for your University of Otago login credentials again.

Please contact AskOtago if you need any help with setting up Mac OS for eduroam:  
 Freephone 0800 80 80 98 (within New Zealand)  
 Freephone 1800 46 82 46 (within Australia)  
 Tel +64 3 479 7000

[Enquiry form](#)  
[Online chat](#)