

How to connect to the eduroam Wi-Fi service at another location using Windows 7 (Ultimate edition with Service Pack 1)

These instructions will help University of Otago staff and students connect to the eduroam wireless (Wi-Fi) service at participating locations. The default eduroam WLAN settings for your laptop are:

| Eduroam Wi-Fi Security Configuration | |
|--------------------------------------|--|
| SSID | eduroam |
| Security | WPA2-Enterprise (802.1X/EAP) |
| Authentication Method | PEAP-MSCHAPv2 |
| Encryption Type | AES-CCMP |
| Login User Account | <university_username>@otago.ac.nz |
| Validate Server Certificate | AddTrust External CA Root OR AusCERTServerCA.crt |

The Trusted Root CA certificate can be downloaded here if required:

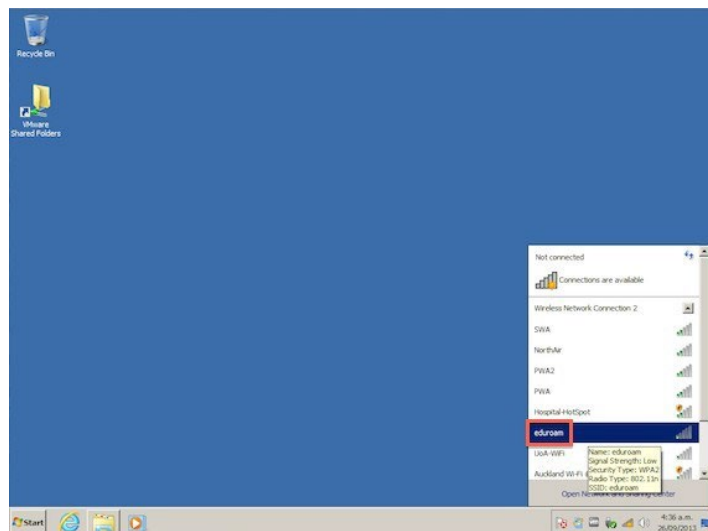
<https://www.quovadisglobal.com/download-roots-crl/>

Select: QuoVadis Root CA2
SHA1 - RSA – 4096
Download as DER

| | |
|---|--|
| QuoVadis Root CA2 SHA1 - RSA - 4096 | Valid until: 24/Nov/2031 Serial: 05 09 CRL: http://crl.quovadisglobal.com/qvrsa2.crl Download as DER - Download as PEM |
|---|--|

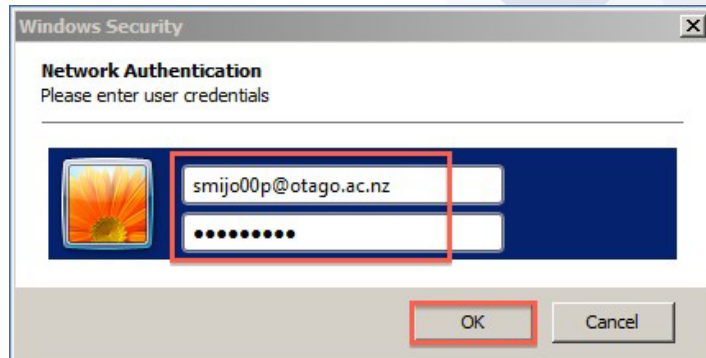
This section provides step-by-step instructions to configure your eduroam WLAN settings.

1. Once you are at the eduroam-participating location, click on your **Network Connections** icon (wireless bars) in the system tray, and click on **eduroam** from the available wireless networks.

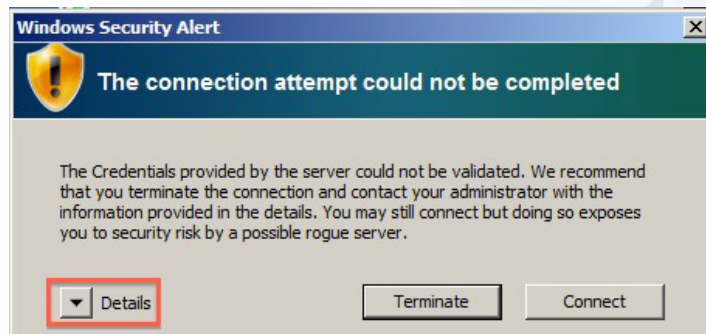


- In the **Network Authentication** window, enter your University of Otago username (in the format <username>@otago.ac.nz) and password.

Click **OK**.

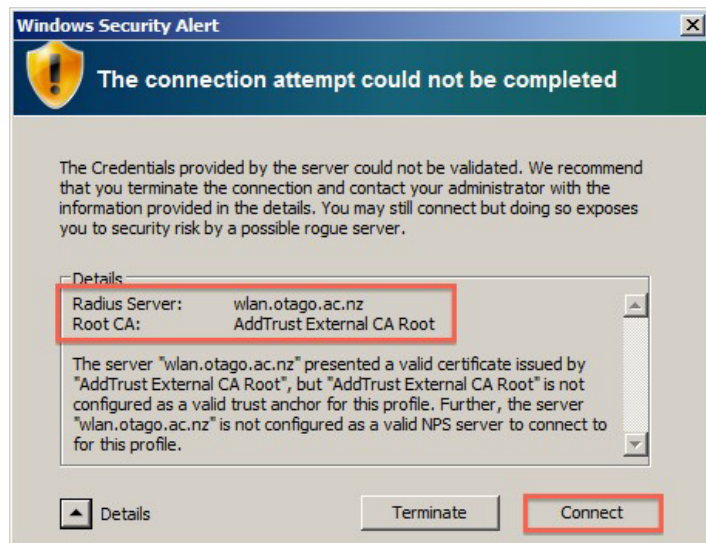


- You will be prompted to accept the credentials (security certificate) from the authentication server. Click on the **Details** arrow.



- Check that the RADIUS server is wlan.otago.ac.nz and the Root CA is AddTrust External CA Root.

Click the **Connect** button.



Open your web browser and go to <http://www.otago.ac.nz> to confirm that you are connected to the eduroam network. If this step fails, please reconnect to the eduroam wireless network by disabling then reenabling your Wi-Fi. You will be asked for your University of Otago login credentials again.

Please contact AskOtago if you need any help with setting up Windows 7 for eduroam: phone 64 3 479 7000 or 0800 80 80 98 or email askotago.it@otago.ac.nz