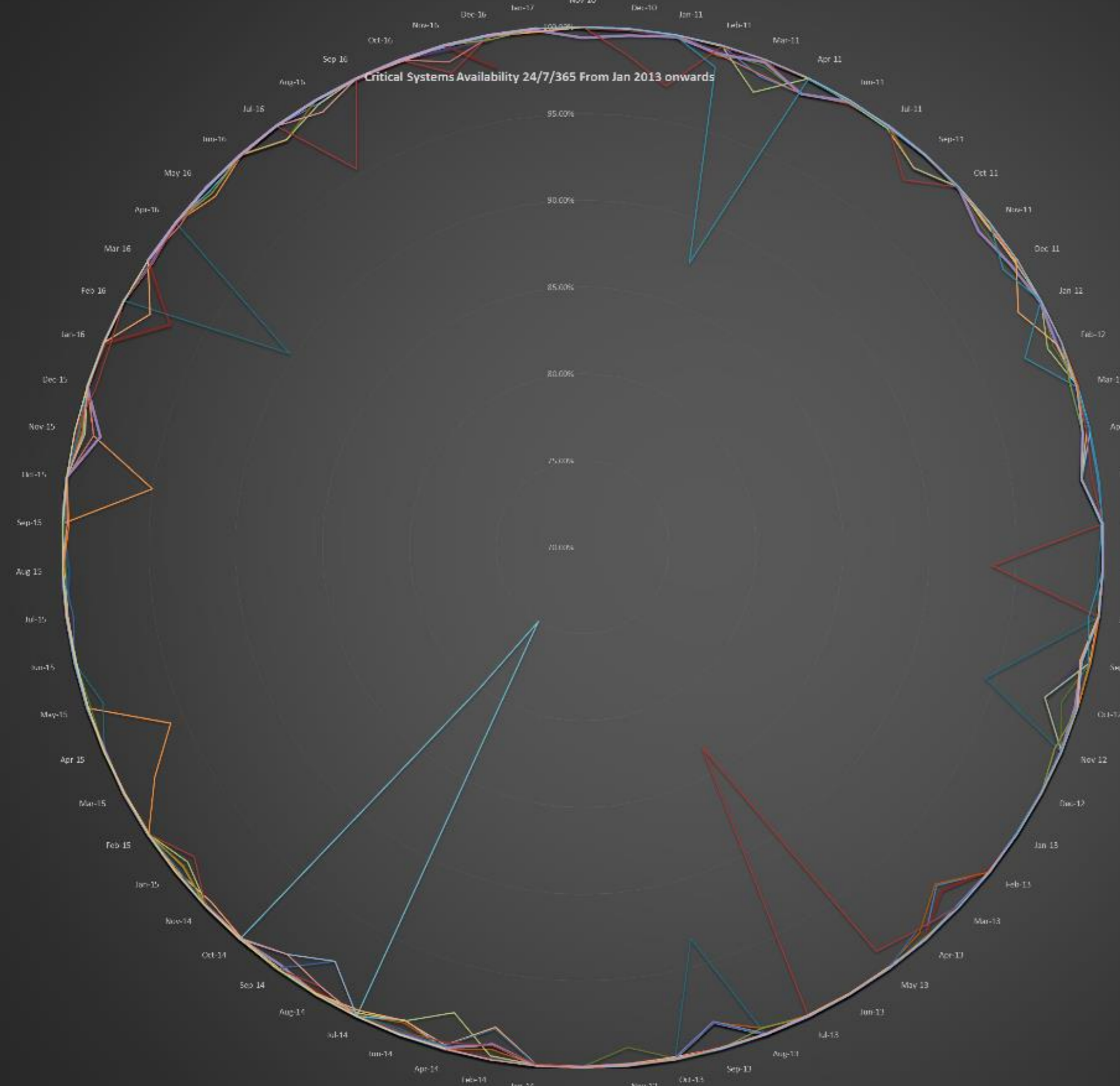


Critical Systems Availability 24/7/365 From Jan 2013 onwards



- VMware vams
- FCS High Capacity Storage (Holon)
- Sync & Share File Services (Syncolity)
- All Oracle Databases and SQL Server instances
- Finance One
- HR Payroll
- Oracle Application License Systems (ZZ)
- eVision Student Management
- IBM / Oracle Single Sign-on Service
- Active Directory for staff and students, etc., central LDAP
- Business Objects Enterprise Reporting
- Blackboard
- My Research
- SQL Server Data Warehouse
- Oracle Web Content Mgmt
- Podcasting
- Exchange Staff Mail / External mail Hubs
- Exchange Student mail (Office 365)
- VDI Student Desktop
- Canvas
- Oracle Connect
- Student Printing
- Cloudrive Backup Management
- Central Storage (vFlex / XtremIO)