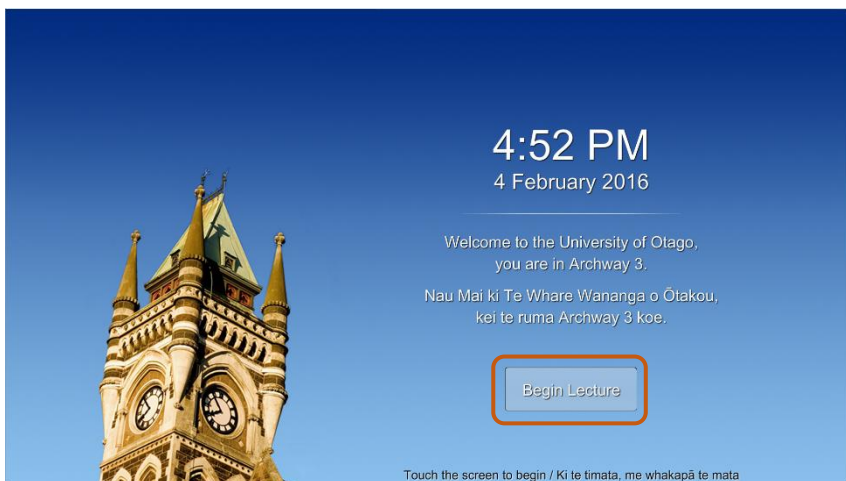


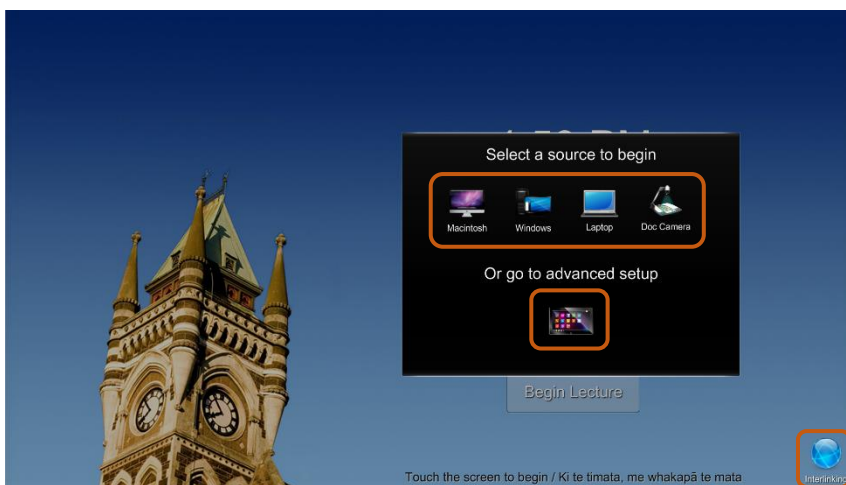
Basic Mode

Home Screen



→ Touch 'Begin Lecture' for options.

Home Screen Options



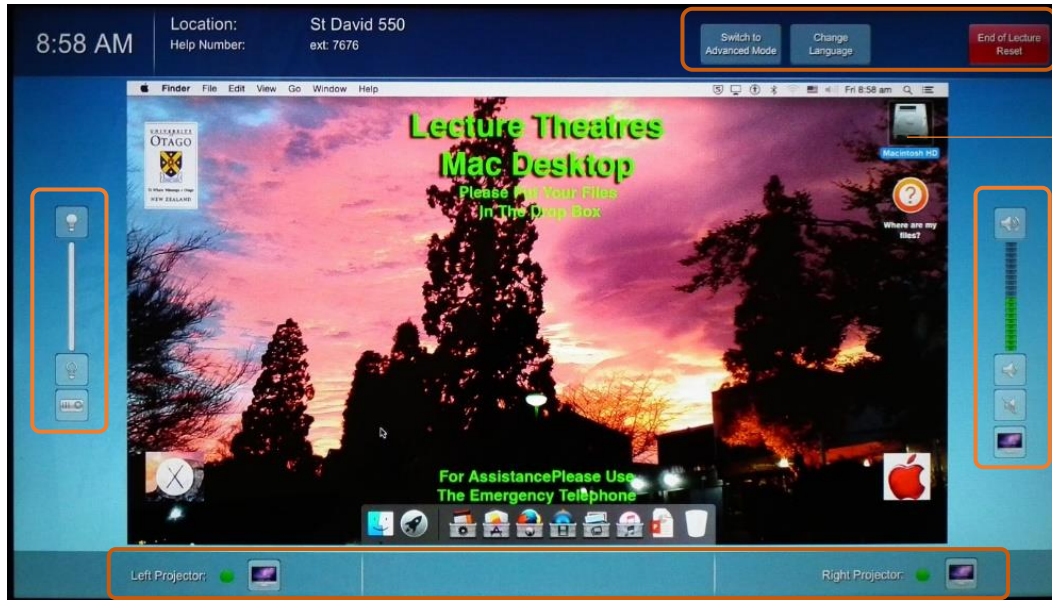
→ Touch an icon start in Basic Mode.

→ Touch icon for Advanced Mode.

→ Touch Interlinking to set up Interlinking.

Basic Mode Screen

Lighting Controls and Projector lighting pre-set



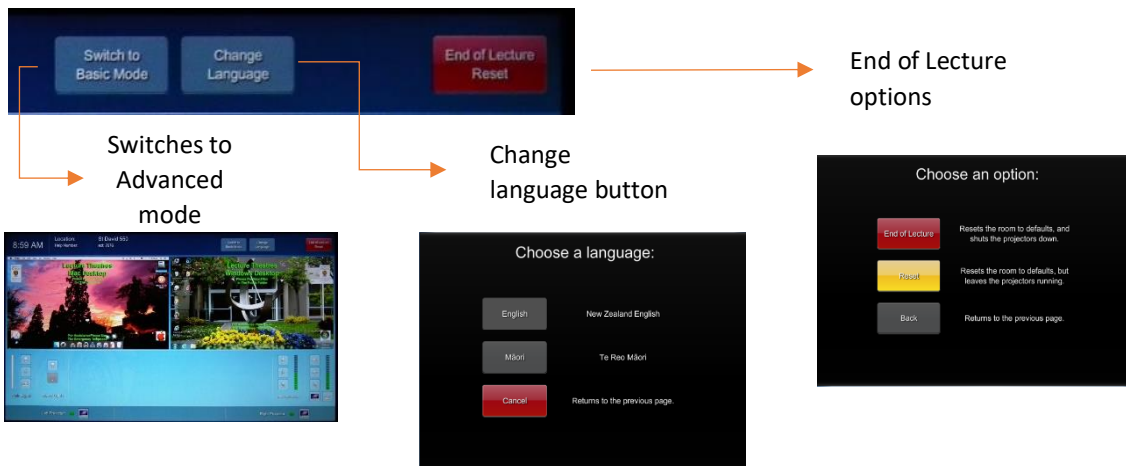
Configure buttons

Preview controls

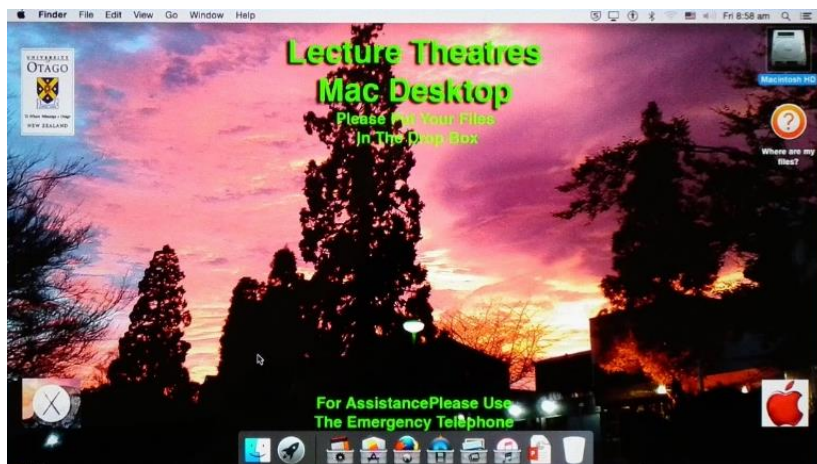
Audio Volume Controls, Audio Input Sources and Audio Lock

Projector controls

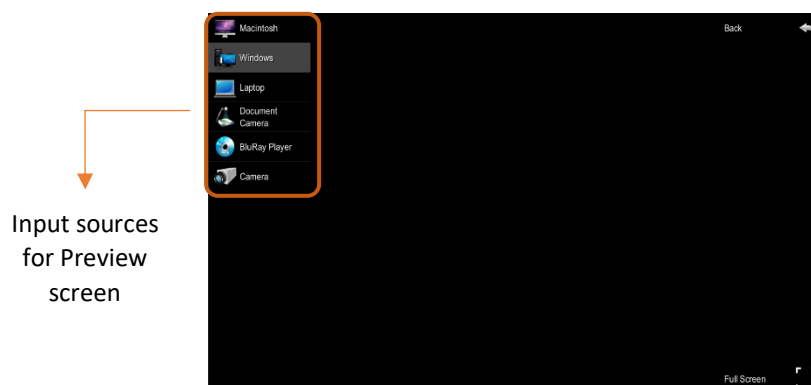
Configure buttons



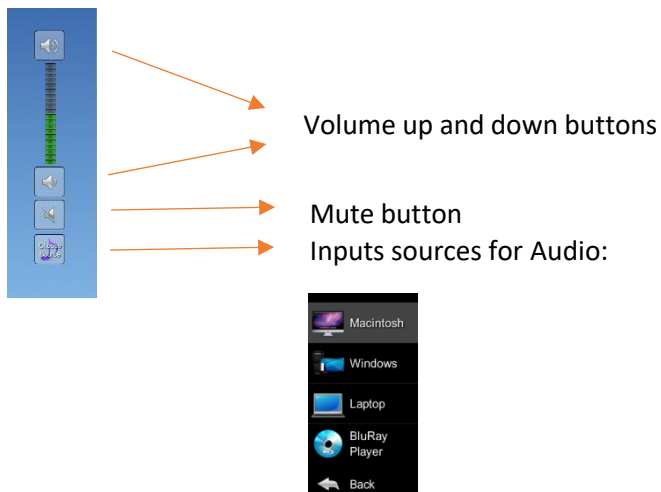
Preview controls



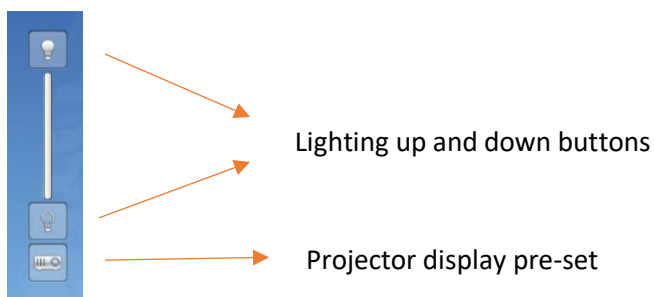
Touch within the Preview window for Input source options:



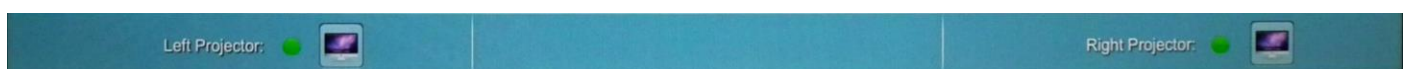
Audio Volume Controls, Audio Input Sources and Audio Lock



Lighting Controls and Projector lighting pre-set



Projector Controls



Input sources for Projectors



Once you make a selection at the Begin Lecture screen, both projectors will start automatically and display your selection.

Both projectors will change to the different source. If you wish to display one projector in Basic Mode, choose Blank Projector.