

How to connect to the eduroam Wi-Fi service at another location using iOS

These instructions will help University of Otago staff and students connect to the eduroam wireless (Wi-Fi) service at participating locations. The default eduroam WLAN settings for your laptop are:

Eduroam Wi-Fi Security Configuration	
SSID	eduroam
Security	WPA2-Enterprise (802.1X/EAP)
Authentication Method	PEAP-MSCHAPv2
Encryption Type	AES-CCMP
Login User Account	<university username>@otago.ac.nz
Validate Server Certificate	AddTrust External CA Root OR AusCERTServerCA.crt

The Trusted Root CA certificate can be downloaded here if required:
<https://www.quovadisglobal.com/QVRepository/DownloadRootsAndCRL.aspx>

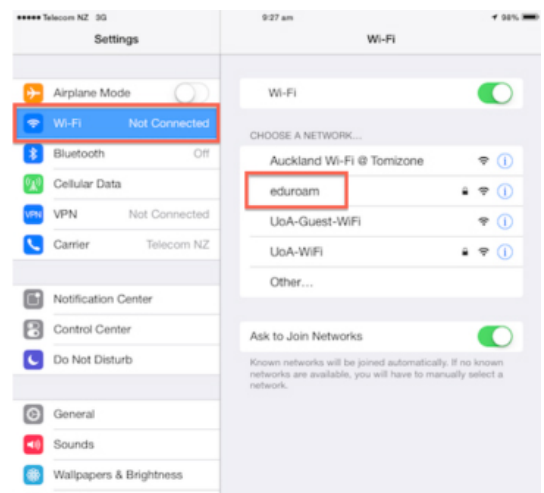
Select: QuoVadis Root CA2
SHA1 - RSA - 4096
Download as DER

QuoVadis Root CA2 SHA1 - RSA - 4096	Valid until: 24/Nov/2031 Serial: 05 09 CRL: http://crl.quovadisglobal.com/qvrca2.crl Download as DER - Download as PEM
---	--

Setting up an eduroam wireless connection at another campus using iOS

This section provides step-by-step instructions to configure your eduroam WLAN settings.

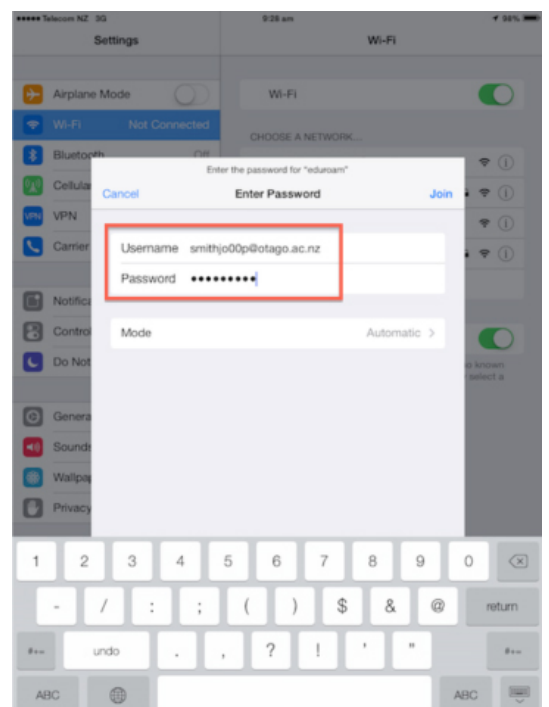
1. Once you are at the eduroam-participating location, go to **Settings > Wi-Fi** and find the **eduroam** wireless network.



2. You will be prompted to enter your password. Enter your University of Otago username (in the format <username>@otago.ac.nz) and password.

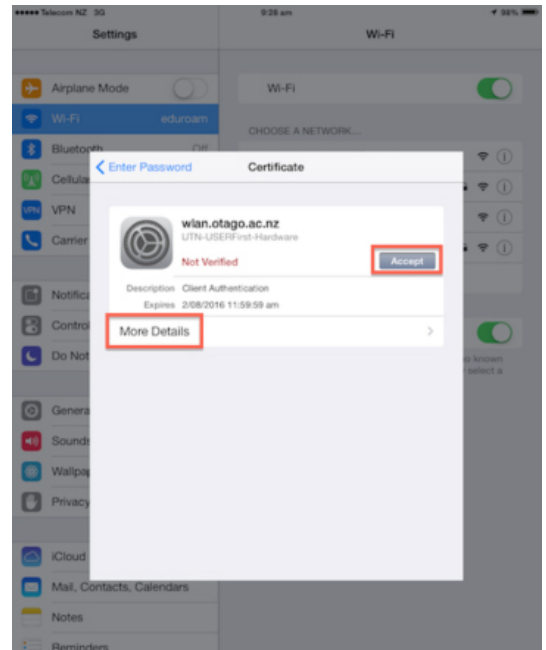
The **Mode** should be **Automatic**.

Click **Join**.

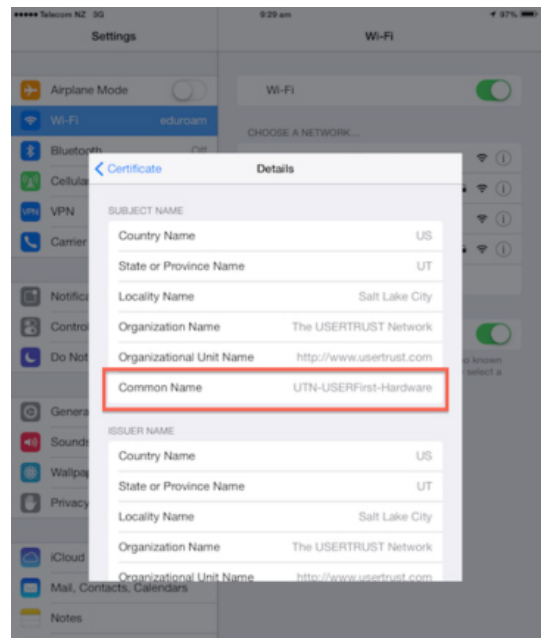


3. You will be asked about the Certificate (wlan.otago.ac.nz).

Click on **More Details**.



4. Check that the **Common Name** in the details is **UTN-USERFirst-Hardware**. Go back to the Certificate window and click **Accept**.



5. You are now connected to the eduroam network. Click on **eduroam** to check that you have been assigned an IP address (this will be different at each location).

Open your web browser and go to <http://www.otago.ac.nz> to confirm that you are connected to the eduroam network.

