

## How to connect to the eduroam Wi-Fi service at another location using Windows 7 (Ultimate edition with Service Pack 1)

These instructions will help University of Otago staff and students connect to the eduroam wireless (Wi-Fi) service at participating locations. The default eduroam WLAN settings for your laptop are:

Eduroam Wi-Fi Security Configuration	
SSID	eduroam
Security	WPA2-Enterprise (802.1X/EAP)
Authentication Method	PEAP-MSCHAPv2
Encryption Type	AES-CCMP
Login User Account	<university username>@otago.ac.nz
Validate Server Certificate	AddTrust External CA Root <b>OR</b> AusCERTServerCA.crt

The Trusted Root CA certificate can be downloaded here if required:  
<https://www.quovadisglobal.com/QVRepository/DownloadRootsAndCRL.aspx>

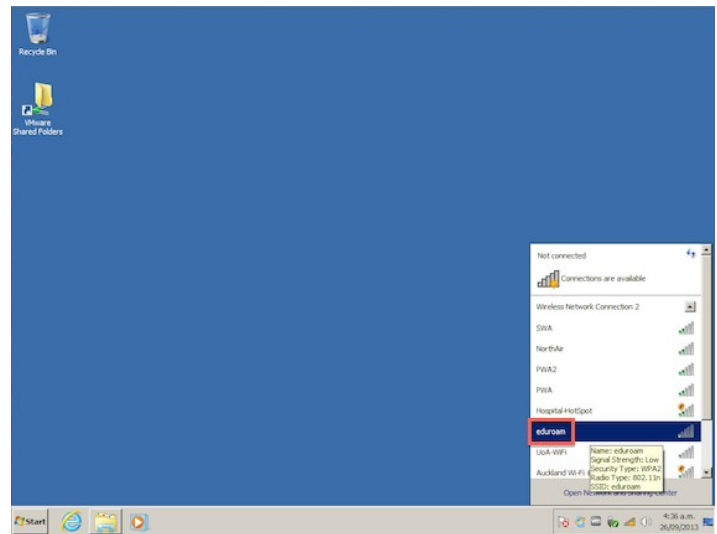
**Select:** QuoVadis Root CA2  
 SHA1 - RSA - 4096  
 Download as DER

<b>QuoVadis Root CA2</b> SHA1 - RSA - 4096	Valid until: 24/Nov/2031 Serial: 05 09 CRL: http://crl.quovadisglobal.com/qvrca2.crl Download as DER - Download as PEM
---	---

## Setting up an eduroam wireless connection at another location using Windows 7

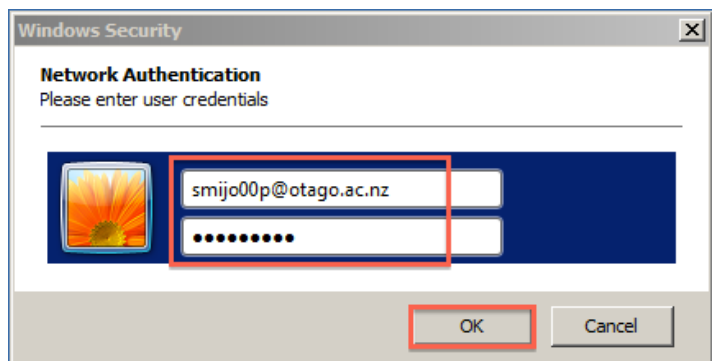
This section provides step-by-step instructions to configure your eduroam WLAN settings.

1. Once you are at the eduroam-participating location, click on your **Network Connections** icon (wireless bars) in the system tray, and click on **eduroam** from the available wireless networks.

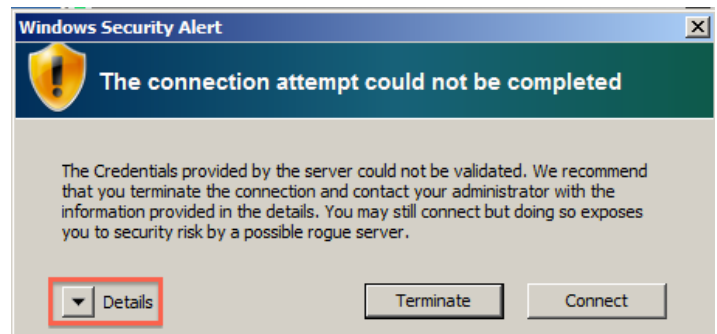


2. In the **Network Authentication** window, enter your University of Otago username (in the format <username>@otago.ac.nz) and password.

Click **OK**.

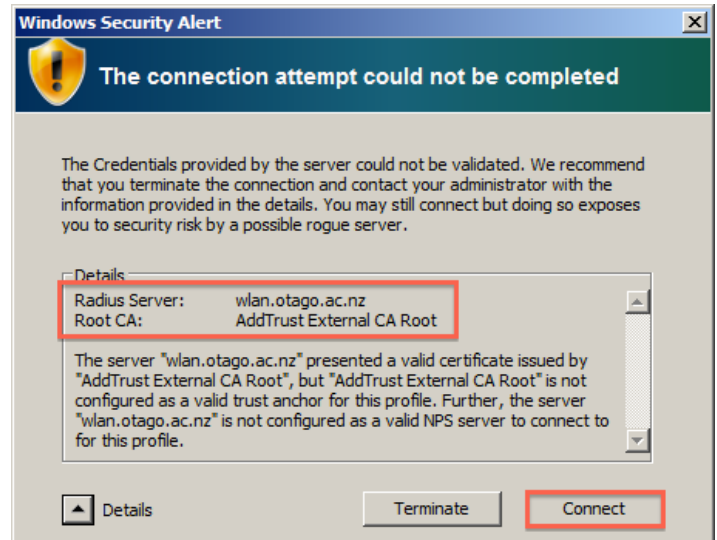


3. You will be prompted to accept the credentials (security certificate) from the authentication server. Click on the **Details** arrow.



4. Check that the RADIUS server is **wlan.otago.ac.nz** and the Root CA is **AddTrust External CA Root**.

Click the **Connect** button.



5. Open your web browser and go to <http://www.otago.ac.nz> to confirm that you are connected to the eduroam network. If this step fails, please reconnect to the eduroam wireless network by disabling then re-enabling your Wi-Fi. You will be asked for your University of Otago login credentials again.