

CABINET THIRTEEN: FRIENDS AND LITERARY CONTACTS

Denis Glover's *bedside book*. Wellington: A.H. & A.W. Reed, 1963. Bra PR 9640/ G5/ D4.  
Allen Curnow to Charles Brasch, 2 March 1944. In Curnow's *Sailing or drowning* (1944). Bra PR 9640/ C8/ S2.  
Charles Brasch, Ian Milner, Jack Bennett, and James Bertram, in *Islands*, v.2, no.3 (Spring 1973).  
Basil Dowling, James K. Baxter, and Charles Brasch. Brasch Papers, MS 996-12/169.  
James K. Baxter, *A small ode on mixed flattening*. Christchurch: The Caxton Press, [1967]. Bra PR 9641/ B3/ S5.  
Janet Frame, *Mona Minim and the smell of the sun*. New York: George Braziller, 1969. Bra PR 9641/ F7/ M6.

CABINET FOURTEEN: AN INDIAN INTERLUDE

Rabindra Nath Tagore, *Gitanjali*. London: Chiswick Press, 1912. Bra PR PK 1723/ G5/ A28.  
Khushwant Singh, *Train to Pakistan*. London: Four Square Book, 1961. Bra PR 9501/ S5/ T7.  
M. Krishnamurti, *The cloth of gold*. Vermont (USA): Charles Tuttle, [1951]. Bra PR 9500/ K7/ C55.  
Amitra Pritam, *Black rose*. Delhi: Nagmani, 1967. Bra PK 2659/ A44/ B5/ A22.

CABINET FIFTEEN: FAVOURITES

Rainer Maria Rilke, *Letters to a young poet*. New York: Norton, 1934. Bra PT 2635/ I65/ B7/ A25.  
Alexander Gilchrist, *The life of William Blake*. London: Dent, 1942. Bra PR 4146/ Gp19/ 1942.  
W. B. Yeats, *The Tower*. London: Macmillan, 1928. Bra PR 5904/ T69.  
Robert Graves, *Collected poems (1914-1947)*. London: Cassell, 1948. Bra PR 6013/ R35/ A17/ 1948.  
W.H. Auden, *Mountains*. London: Faber and Faber, 1954. Bra PR 6001/ U4/ M6.

CABINET SIXTEEN: OWN WRITING

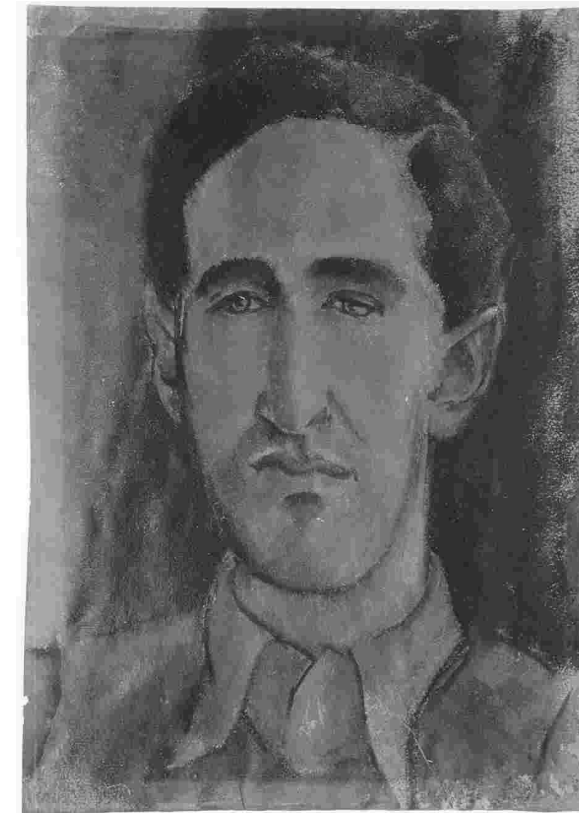
Charles Brasch, *The land and the people and other poems*. Christchurch: The Caxton Press, 1939. Bra PR9640/ B67/ L3.  
\_\_\_\_\_, *Journal*, May 1957. Brasch Papers, MS 996- 9/25.  
\_\_\_\_\_, 'In My View', a selection. Brasch Papers, MS 996- 7/11.  
\_\_\_\_\_, *Indirections: a memoir 1909-1947*. Wellington: Oxford University Press, 1980. Bra PR 9640/ B67/ Z5/ A16.

CABINET SEVENTEEN: THE ARTS

Arthur R. Howell, *Frances Hodgkins: four vital years*. London: Rockliff, 1951. Bra ND 1108/ H6/ HU89  
*Frances Hodgkins 1869-1947: A centenary exhibition*. Auckland: Wakefield Press, [1969]. Bra ND 1108/ H6/ A4/ 1969.  
*Memorial exhibition of the works of Frances Hodgkins 1869-1947*. [England]: The Arts Council, 1952. Bra ND 1108/ H62/ A4/ 1952.  
*Colin McCahon, a survey exhibition*. Auckland: Auckland City Art Gallery, 1972. Bra ND 1108/ M25/ A4/ 1972.  
Five McCahon exhibition leaflets. Brasch Pamphlet Collection.

CABINET EIGHTEEN: LEGACY

'This page is to surprise & honour Charles Brasch', facsimile of original tipped in *Landfall*, 80 (December 1966).  
Charles Brasch, c.1955. Brasch Papers, MS 996-12/94.  
*Islands*, v.1, no.1 (Spring 1972). Brasch Pamphlet Collection.  
*Landfall*, no.205 (May 2003).  
Charles Brasch, *Home ground*. Christchurch: The Caxton Press, 1974. Bra PR 9640/ B67/ H6.



Portrait by Helen Kepp, ca 1930. Hocken Library.

## *Harmonizing my starting place:*

Charles Brasch, Patron, Poet and Collector

ITEMS ON DISPLAY

4 JULY - 31 OCTOBER 2003

SPECIAL COLLECTIONS • DE BEER GALLERY

1st FLOOR • CENTRAL LIBRARY • UNIVERSITY OF OTAGO



*I have come to the end of doubt  
And to the beginning of the knowledge of self;  
I have described a circle round the earth  
And reach my starting place,  
And I am ready for that which awaits me there.*

Charles Brasch, *The Quest*.

This exhibition celebrates the life and legacy of Charles Orwell Brasch (1909-1973), the Dunedin-born man who formed much of New Zealand's artistic and literary tradition by his twenty-year editorship of *Landfall*, New Zealand's premier literary magazine. Brasch was also a patron of the arts, offering support and encouragement to many artists and writers. He was also a fine poet, producing six volumes of verse, translating poems of Russian, German and Indian poetry, and writing a memoir, published posthumously in 1980 as *Indirections: a memoir 1909-1947*.

2003 is Charles Brasch's year. An exhibition has already been mounted at the Hocken Library, and the University of Otago Press is preparing a publication about him, due out in October. In addition, after a thirty-year embargo, his extensive collection of papers and correspondence at the Hocken Library is now available.

Brasch's library of 7,500 volumes and his collection of art works (461 pieces) are extant. His papers at the Hocken Library detail many aspects of his life, his thoughts on other artists and writers, and trace his own development as a writer, poet and editor. A selection of books from his library, and a selection of journals, correspondence, photographs and pictures have been used to highlight his life, his achievements and his legacies. By utilizing these works, some for the very first time, it is hoped that further knowledge, understanding and appreciation is gained of this very important New Zealander.

*'Harmonizing my starting place: Charles Brasch, patron, poet and collector.'*  
4 July to 31 October 2003, de Beer Gallery, Special Collections, University of Otago.

## ITEMS ON DISPLAY

### CABINET ONE: LANDFALL

*Landfall*, v.1, no.1 (March 1947) – v.20, no.4 (December 1966).  
*Landfall Country. Work from Landfall, 1947-61*. Christchurch: The Caxton Press, 1962. Bra PR 9634.4/ L758.  
*The Phoenix*, v.1, no.1 (March 1932); v.2, no.1 (March 1933). Brasch Pamphlet Collection.  
*Tomorrow*, v.1, no.16 (31 October 1934). Jnl AP 7.5/ T65/ 1934.  
*The Adelphi*, v.2, no.10 (March 1925). Jnl AP.A/ A33/

### CABINET TWO: FAMILY

Charles Brasch, n.d. Brasch Papers, MS 996-12/64.  
Helene Brasch and her son Charles, c. 1912. Brasch Papers, MS 996-12/59.  
Helene Brasch to Sara and Willi Fels, 10 June 1914. Brasch Papers, MS 996- 10/33.  
Charles Brasch, *Indirections: a memoir 1909-1973*. Wellington: Oxford University Press, 1980. Private Collection.  
Willi Fels at Stockholm, 1935. Brasch Papers, MS 996, E61 32/3  
Willi Fels to Charles Brasch, 24 July 1930. Brasch Papers, MS 996-3/122.  
Photographs of houses: 'Bankton' (MS 996-12/95); 'Manono' (MS 996-12/91); and Heriot Row (MS 996 – E6549/15.)  
Lesley Brasch, Esmond de Beer, Dora de Beer and Charles Brasch. Brasch Papers, MS 996 – 12/64.  
Hyam Brasch to Charles Brasch, 29 May 1954. Brasch Papers, MS 996-10/27.  
Charles, Hyam, and Lesley Brasch. Brasch Papers, MS 996-12/58.  
Matriculation and law certificates. Brasch Papers, MS 996-10/20.

### CABINET THREE: WAITAKI

Collage of Waitaki Boys' High School. Brasch Papers, MS 996 – 12/542.  
R.W. Emerson, *Poems*. London: Oxford University Press, 1921. Bra PS 1624/ A1/ 1921.  
*The Waitakian*, v.19, no. 2 (December 1924). Hocken Per. Wai.  
James Bertram, Study of a head in profile of Charles Brasch, 1926. Brasch Pictorial Collection, Hocken Library.  
Sir John Everett Millais, 'Ophelia', 1851-2.

### CABINET FOUR: EARLY READING I

Timothy Hilton, *Keats and his world*. London: Thames and Hudson, 1971. Bra PR 4836/ HM74.  
Robert Louis Stevenson, *The wreckers*. London: Heinemann, 1924. Bra PR 5487/ W7/ 1924.  
Selma Lagerlöf, *The further adventures of Nils*. London: Dent, 1953. Bra PT 9767/ F8/ E5/ 1953.  
James Elroy Flecker, *Collected poems*. London: Martin Secker, 1924. Bra PR 6011/ L4/ A17/ 1916.

### CABINET FIVE: EARLY READING II

Rudyard Kipling, *The jungle book*. London: Macmillan, 1899. Bra PR 4854/ J8/ 1899.  
\_\_\_\_\_, *The second jungle book*. London: Macmillan, 1899. Bra PR 4854/ S42.  
Franz Hoffmann, *Willy*. Stuttgart: Schmidt and Spring, 1864. Bra PZ 38/ HP47.  
*An anthology of modern verse*. London: Methuen, 1923. Bra PR1224/ AL65/ 1923.  
Robert Browning, *Pippa Passes*. London: Heinemann, 1906. Bra PR 4218/ A1/ 1906.  
J. G. Robertson, *The literature of Germany*. London: Williams & Norgate, n.d. Bra PT 99/ RM55.  
Charles Brasch, c.1927. Brasch Papers MS 996-12/64.

### CABINET SIX: OXFORD

*Excerpta E Statutis Universitatis Oxoniensis*. Oxford: Oxford University Press, c.1925. Bra LF 501/A7/ OZ5.  
*Ackermann's Oxford*. London: Penguin Books, 1954. Bra LF 518/ A519.  
*Journal of Katherine Mansfield*. London: Constable, 1927. Bra PR 9640/ M35/ Z5/ A345.  
James Joyce, *Pomes penyeach*. Paris: Shakespeare & Co, 1927. Bra PR 6019/ O9/ P5.  
William Shakespeare, *Tragedy of Hamlet*. London: Dent, 1927. Bra PR 2807/ A1/ 1895.  
Charles Brasch, *Not far off*. Christchurch: The Caxton Press, 1969. Bra PR 9640/ B67/ N6/ 1969.

### CABINET SEVEN: EUROPE

Michelangelo Buonarroti, *Rime*. Firenze: Raccolta Nazionale dei Classici Diretta da Giovanni Papini, 1927. Bra PQ 4615/ B6/ A17/ 1927.  
Martin Hürlimann, *Italy*. London: Thames & Hudson, 1953. Bra + Dg 420/ HY67.  
George Moore, *Confessions of a young man*. New York: Modern Library, [1920]. Bra PR 5043/ A41.  
W. B. Yeats, *A vision*. London: T. Werner Laurie, 1925. Bra PR 5904/ V53.

### CABINET EIGHT: EYIPT

Charles Brasch in Luxor, Brasch Papers, MS 996-12/63.  
Nina M. Davies, *Egyptian paintings*. London: Penguin Books, 1954. Bra ND 75/ D767.  
*The English poems of Richard Crashaw*. London: Methuen, 1901. Bra PR 3386/ A6/ 1901.  
J. S. Willmore, *Handbook of spoken Egyptian Arabic*. London: Simpkin, Marshall, Hamilton, Kent & Co, 1927. Bra PJ 6779/ WQ58/ 1927.  
Karl Baedeker, *Egypt and the Sudan*. Leipzig: Baedeker, 1929. Bra DT 45/ B351/ 1929.  
Queen Nefertiti, postcard. Brasch Papers, MS 996-12/506.  
John D. S. Pendlebury, *Tell el-Amarna*. London: Lovat Dickson & Thompson, 1935. Bra DT 73/ T25/ PC82.

### CABINET NINE: ENGLAND I

Missenden Abbey School, Brasch Papers, MS 996- 12/625.  
C.G. Jung, *Modern man in search of a soul*. London: Kegan Paul, Trubner & Co, 1934. Bra BF 173/ JY33.  
Charles Brasch, Journal, Lawn Road, London, 1942. Brasch Papers, MS 996-9/8.  
Franz Kafka, *The castle*. London: Martin Secker, 1930. Bra PT 2621/ A26/ S34.  
Fred Manner, 'Charles Brasch as a fire-watcher', c. 1941-2. Brasch Papers, MS 996-12/625.  
Letter from Joan Rodgers to Charles Brasch, 3 July 1941. In Byron, *Works* (1926). Bra PR 4350/ 1926.

### CABINET TEN: ENGLAND II

E. J. Scovell, *The river steamer and other poems*. London: Cresset Press, 1956. Bra PR 6037/ C946/ R5/ 1956.  
Charles Brasch, *The quest: words for a mime play*. London: Compass Players, 1946. Bra PR 9640/ B67/ Q4.  
*The Penguin New Writing, No.9*. Edited by John Lehmann. Allen Lane: Penguin Books, 1941. Brasch Pamphlet Collection.  
Boethius, *The consolation of philosophy*. London: Heinemann, 1926. Bra PA 6156/ B6/ 1926.  
Eric Gill, *In a strange land: essays*. London: Jonathan Cape, 1944. Bra PR 6013/ I343/ I5.  
\_\_\_\_\_, *First nudes*. London: Neville Spearman, 1954. Stk NC 228/ G53/ A4/ 1954.  
E. M. Forster, *What I believe*. London: The Hogarth Press, 1939. Bra PR 6011/ O58/ W51.

### CABINET ELEVEN: TRANSLATIONS

Hilde Zissermann, *Gedichte aus Neuseeland*. Dunedin: John McIndoe, 1970. Bra PT 2653/ I677/ G4.  
Alexander Blok, *The Twelve*. London: Chatto & Windus, 1920. Bra PG 3453/ D8/ BC55.  
Sergei Esenin, *Poems*. Wellington: Wai-Te-Ata Press, 1970. Bra PG 3476/ E8/ A23.  
Ivan S. Turgenev, *Fathers & sons*. Cambridge: Cambridge University Press, 1965. Bra PG 3420/ O8/ 1965.

### CABINET TWELVE: NEW ZEALAND

Charles Brasch, *Disputed ground*. Christchurch: The Caxton Press, 1948. Bra PR 9640/ B67/ D5.  
Charles Brasch, 'Journal of a holiday to Fiordland, 8-20 December 1948.' Brasch Papers, MS 996-9/13.  
Mary Ursula Bethell, *Collected poems*. Christchurch: The Caxton Press, 1950. Bra PR 9640/ B43/ A17/ 1950.  
Charles Brasch rock climbing. Brasch Papers, MS 996-12/219.  
Charles Brasch, *The Estate and other poems*. Christchurch: The Caxton Press, 1957. Bra PR 9640/ B67/ E8.