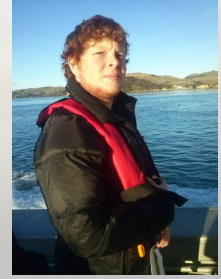




# The World is your Oyster:

## The effects of Diet and Temperature on Bluff Oyster (*Ostrea Chilensis*) Reproduction



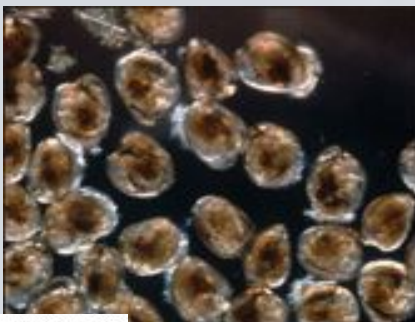
Sam Heenan  
Masters Degree  
Marine Science Department

### Why is the research important?

- Bluff Oysters are unusual, as how they breed changes between locations because of different environmental conditions
- There has been a lot of studies on oyster reproduction, but none in Southland since the 1980s, before the *Bonamia* virus.
- Knowing more about reproduction is important for Oyster fisheries and aquaculture



**A shucking interesting fact:  
Oysters can filter 1.3 Gallons of water per hour!!!**



### How is the research done?

- Monthly microscopic analysis of oyster samples to determine breeding cycles
- Lab experiments with oysters in tanks, fed different diets to determine the effects on reproduction
- Thermal tolerance work on larvae