



The NZ Seashore Transect Survey

**ATTENTION
Level 2
Biology
Teachers!**

If you are a secondary school teacher you will want to get your senior biology students involved in a Marine Metre Squared Project called the NZ Seashore Transect Survey.

The NZ Seashore Transect Survey has been developed for Secondary Schools as a meaningful environmental science project that supports the revised New Zealand Curriculum and assessment for NCEA Level 2 Biology.

It provides protocols and resources for students to investigate zonation in rocky shore

and soft shore (muddy/sandy) communities which can be used as a valid context for Achievement Standard 91158: *Investigate a pattern in an ecological community, with supervision.*

Free teaching and learning resources, access to a database to store and access data, and the support of an on-line community of experts are available to you at:

www.mm2.net.nz

FIND OUT MORE OVERLEAF...



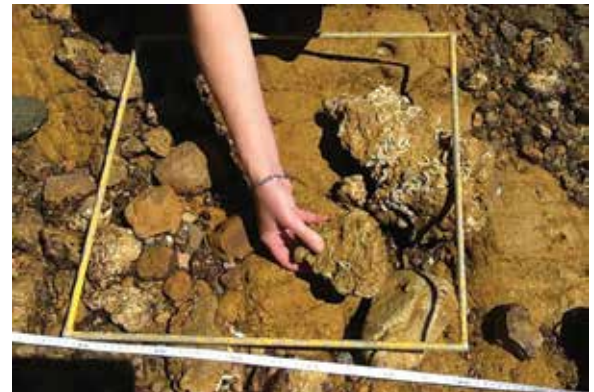
The NZ Seashore Transect Survey



The **NZ Marine Studies Centre** is encouraging schools to get involved in long term monitoring of the marine environment through the Marine Metre Squared project. **The New Zealand Seashore Transect Survey** has been developed specifically for **Secondary Schools** as a meaningful environmental science project that supports the NZ Curriculum and assessment for NCEA Level 2 Biology.

Curriculum links:

- Supports the NZ Curriculum and assessment for NCEA Level 2 Biology.
- Provides protocols and resources for students to investigate zonation in rocky shore communities that can be used as a valid context for **Achievement Standard 91 158: Investigate a pattern in an ecological community, with supervision.**
- Aligned with several of the Key Competencies, Principles and Values of the revised New Zealand Curriculum as well as the compulsory Nature of Science (NOS) strand of the Science Learning Area.



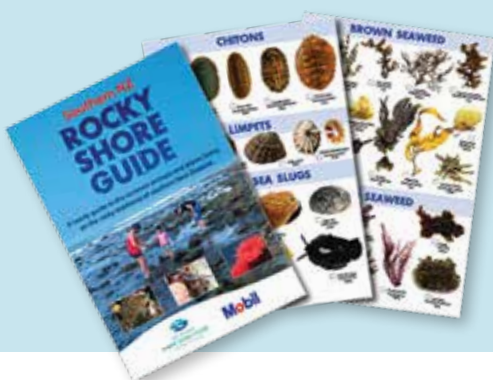
Why get involved?

- Gain access to 'real', reliable data from other schools from around New Zealand.
- Students compare their own data with other years and different geographic locations.
- Engagement in real world citizen science, while working towards achievement standards.

Resources available:

When you sign up to the project you will have access to free teaching and learning resources:

- Species identification guides
- Survey method and data sheets
- Assessment guides
- Classroom reading resource: *Ecology of the NZ Rocky Shore Community*
- Online database to submit, store, view and graph your survey data
- Compare your results with the survey data from other times and sites around NZ
- An online community forum to assist with species identification.



The NZ Marine Studies Centre has created guides and protocols for the rocky shore environment and in early 2014 will release protocols and guides for the sandy and muddy shore environment.

The NZ Seashore Survey is part of the Marine Metre Squared project. Sign in to download resources and to register free of charge.

www.mm2.net.nz

