

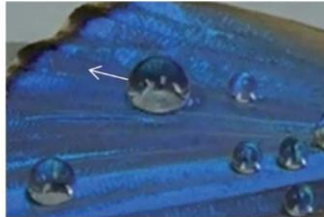
Coating-free Surface-tension Gradient Networks for Enhanced Heat Exchanger Condensation

Chris Hughes, Richard Blaikie, Andrew Sommers & Sam Lowrey

Rice and butterfly wing effect:
combining Lotus and shark skin effects

Rice leaf
(*Oryza sativa*)

Butterfly wing
(*Blue Morpho didius*)



Water droplets moving in direction of arrows

