

# The Climate Safe House

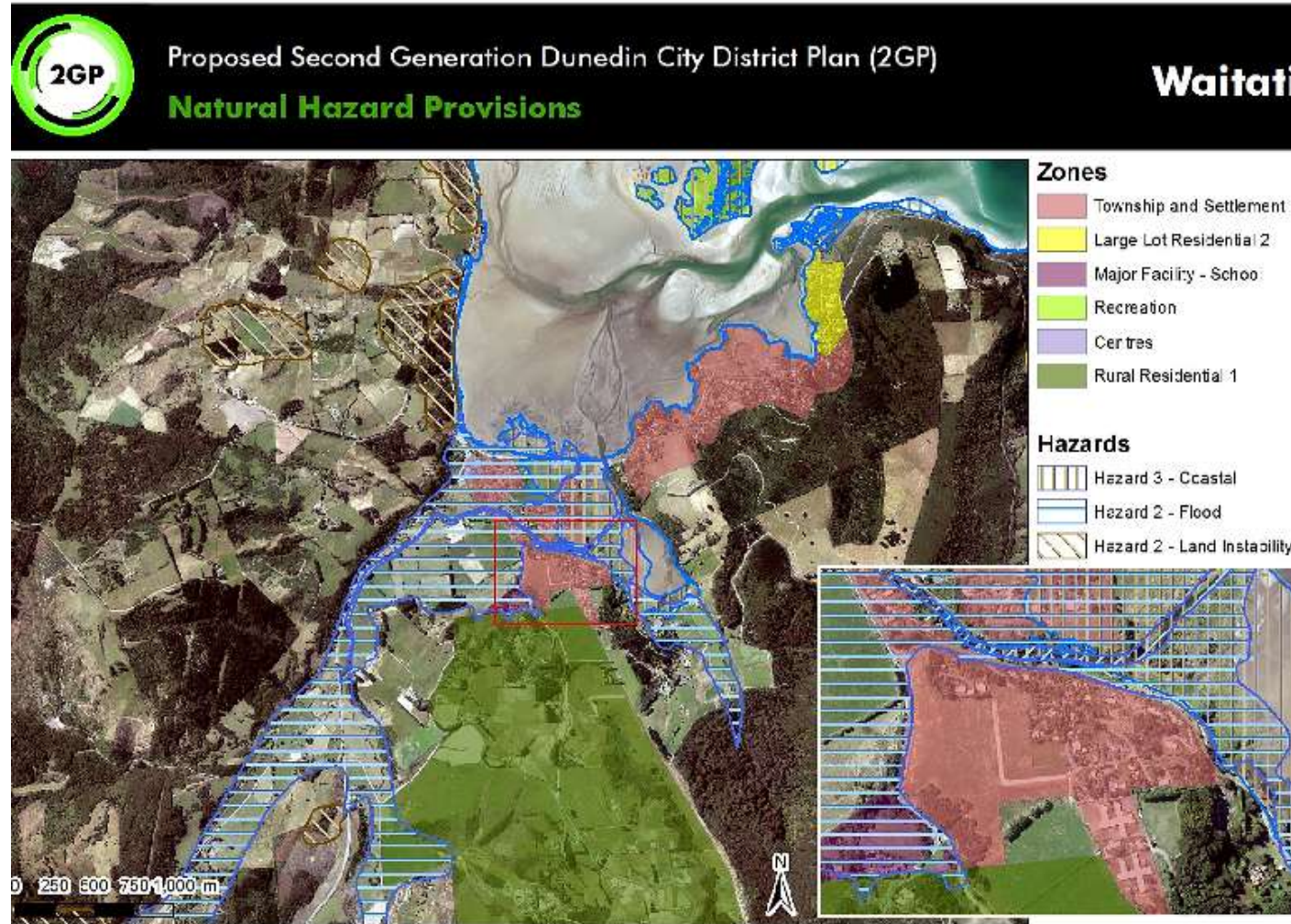
By Katharina Achterberg, Tobias Danielmeier, Colleen Fay, Chris  
Fersterer, Martin Kean, Scott Willis

## Waitati Flood 2006

Many homes in Blueskin Bay and Dunedin are built in a Flood Hazard Zone as mapped in the DCC Second Generation District Plan.



# Proposed 2GP Hazard Zones Waitati



Significant challenges lie ahead:

- Political
- Social
- Economic
- Technical

# Climate Safe House workshop, March 2016



A holistic approach providing a test bed for:

- Energy Generation and Conservation
- Monitoring
- Education
- Design
- Communication





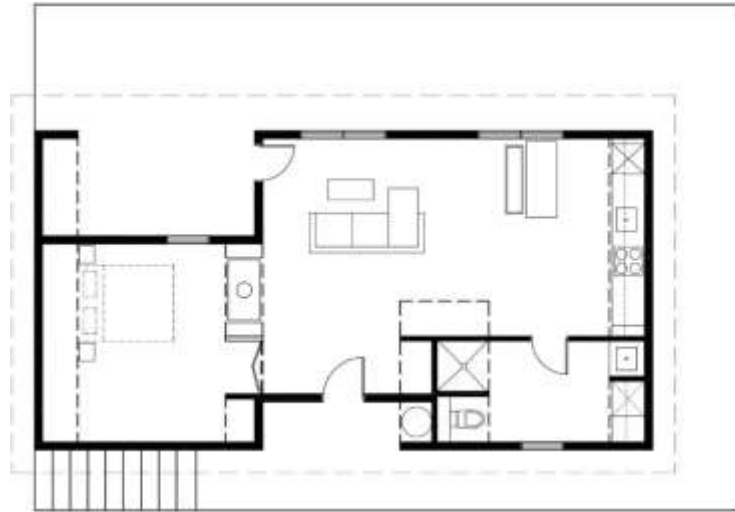
Design by  
Roseanna Bray





Design by  
Sara Förg





Design by  
Ruby Lisk





Design by  
Richa Shah



# Food for thought

- Political challenge:
  - What leadership from local and national politicians will be needed?
  - What other forms of leadership might emerge?
- Social challenge:
  - How can we maintain a community in the midst of a radically changing environment?
  - Are our cultural institutions appropriate for the coming climate chaos?
- Economic challenge:
  - Who is going to pay and where will the money come from?
- Technical challenge:
  - What are feasible and desirable options?
  - Can we benefit from transition engineering as we enter an unpredictable future?