



# Household Energy End Use Project (HEEP2)

Data on energy use and indoor conditions from a nationally representative sample of households

Led by BRANZ, funded by the Building Research Levy

Households recruited from the Stats NZ Household Economic Survey

Co-funding/expansions signalled by MBIE and New Zealand Green Building Council



**OUTDOOR WEATHER**  
Conditions



Electricity measured  
**CIRCUIT LEVEL** at  
one minute  
intervals.  
Supplementary  
**APPLIANCE METERS**



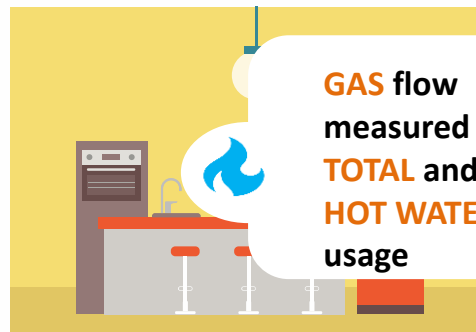
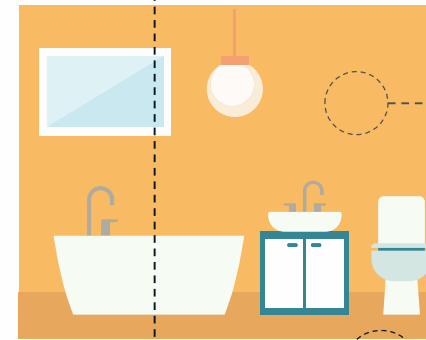
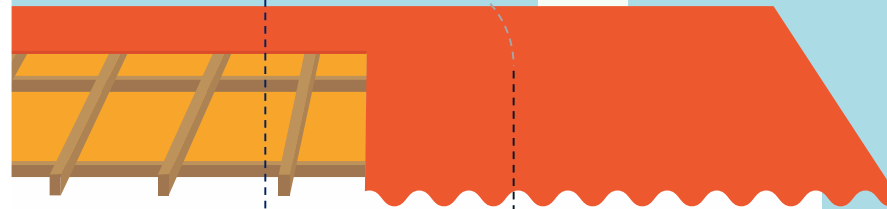
A **BUILDING SURVEY** to calculate energy  
**DEMAND**  
-----  
An **APPLIANCE AUDIT**  
-----  
Measurement of **SHOWER FLOW** rates  
-----  
**INTERVIEW/SURVEY** to understand  
attitudes to energy use



**TEMPERATURE**  
**HUMIDITY**  
**CO<sub>2</sub>**  
in **LIVING AND BEDROOMS**



**HOT WATER**  
usage  
**ESTIMATED**  
using input  
energy and  
temperatures



**GAS** flow  
measured for  
**TOTAL** and  
**HOT WATER**  
usage



Delivered heat  
**ESTIMATED**  
using extra  
temperature  
measurements  
and **MODEL**  
**BUILDING** data



# Wider methodology

