

# Parasites shape community structure and dynamics in freshwater crustaceans

Olwyn C. Friesen<sup>1</sup> , Sarah Goellner<sup>2</sup> , Robert Poulin<sup>1</sup>  and Clément Lagrue<sup>1,3</sup>

## Research Article

**Cite this article:** Friesen OC, Goellner S, Poulin R, Lagrue C (2020). Parasites shape community structure and dynamics in freshwater crustaceans. *Parasitology* **147**, 182–193. <https://doi.org/10.1017/S0031182019001483>

Received: 24 June 2019  
Revised: 27 September 2019  
Accepted: 27 September 2019  
First published online: 4 November 2019

### Key words:

Host community; parasites; population dynamics; species composition

### Author for correspondence:

Olwyn C. Friesen,  
E-mail: [olwynfriesen@gmail.com](mailto:olwynfriesen@gmail.com)

<sup>1</sup>Department of Zoology, 340 Great King St, University of Otago, Dunedin 9016, New Zealand; <sup>2</sup>Center for Integrative Infectious Diseases, Im Neuenheimer Feld 344, University of Heidelberg, Heidelberg 69120, Germany and <sup>3</sup>Department of Biological Sciences, CW 405, Biological Sciences Building, University of Alberta, Edmonton, Alberta T6G 2E9, Canada

### Abstract

Parasites directly and indirectly influence the important interactions among hosts such as competition and predation through modifications of behaviour, reproduction and survival. Such impacts can affect local biodiversity, relative abundance of host species and structuring of communities and ecosystems. Despite having a firm theoretical basis for the potential effects of parasites on ecosystems, there is a scarcity of experimental data to validate these hypotheses, making our inferences about this topic more circumstantial. To quantitatively test parasites' role in structuring host communities, we set up a controlled, multigenerational mesocosm experiment involving four sympatric freshwater crustacean species that share up to four parasite species. Mesocosms were assigned to either of two different treatments, low or high parasite exposure. We found that the trematode *Maritrema poulini* differentially influenced the population dynamics of these hosts. For example, survival and recruitment of the amphipod *Paracalliope fluviatilis* were dramatically reduced compared to other host species, suggesting that parasites may affect their long-term persistence in the community. Relative abundances of crustacean species were influenced by parasites, demonstrating their role in host community structure. As parasites are ubiquitous across all communities and ecosystems, we suggest that the asymmetrical effects we observed are likely widespread structuring forces.

## Introduction

Parasites have long been known to affect many aspects of their host's life history, including survival, growth, reproduction and behaviour (Park, 1948; Read, 1988; Poulin, 1995; Thomas *et al.*, 1998; Thompson *et al.*, 2001; Bollache *et al.*, 2002; Lefèvre *et al.*, 2009), consequently impacting key ecological interactions such as predation and competition (Kunz and Pung, 2004; Mikheev *et al.*, 2010; Reisinger *et al.*, 2015; Friesen *et al.*, 2018). Furthermore, impacts on individual hosts can in turn have community-wide repercussions (Thomas *et al.*, 1998; Lefèvre *et al.*, 2009); direct and indirect impacts of parasites can play a key role in determining species distributions, biodiversity, trophic interactions and, ultimately, community structure in many ecosystems (Price *et al.*, 1986; Schall, 1992; Kiesecker and Blaustein, 1999; Thomas *et al.*, 1999; Fredensborg *et al.*, 2004; Wood *et al.*, 2007; Weinstein *et al.*, 2017).

In ecosystems where two or more host species share the same parasites, one may be more tolerant to infections and become both a reservoir host and superior competitor (Greenman and Hudson, 2000; Friesen *et al.*, 2017), resulting in the eventual exclusion of the less tolerant host species (Park, 1948; Greenman and Hudson, 2000). On the other hand, parasites may weaken the stronger competitor and facilitate the coexistence of alternative hosts (Kiesecker and Blaustein, 1999; Hatcher and Dunn, 2011). Apparent competition may also occur between species that share a parasite, creating indirect competition between the two hosts (Holt, 1977; Hudson and Greenman, 1998). Although the presence of shared parasites may allow one species to out-compete another, both species may still be at a disadvantage when interacting with additional non-host species or when avoiding unaffected predators, including intra-guild ones.

Predation, particularly intra-guild predation, can also be altered by parasites thus affecting predator–prey dynamics within a community (MacNeil *et al.*, 2003). Many infected hosts will also display behavioural changes that increase the parasite's probability of transmission to the next host (Barber *et al.*, 1995; Poulin, 1995; Klein, 2005; Thomas *et al.*, 2005; Sparkes *et al.*, 2006; Lagrue *et al.*, 2007). However, parasite-induced behavioural modifications can also increase host vulnerability to other predators that are unsuitable as hosts (i.e. 'dead-end' hosts; Mouritsen and Poulin, 2003; Seppälä and Jokela, 2008; Seppälä *et al.*, 2008). The importance of parasite-mediated predation remains poorly understood in many cases, let alone at the community or ecosystem level.

In addition, multispecies infections (i.e. simultaneous infections by different parasite species) in a single host are very common in natural systems, further complicating relationships among hosts, parasites and ecosystems (Hughes and Boomsma, 2004; Pedersen and Fenton, 2007; Lagrue and Poulin, 2008; Alizon *et al.*, 2013; Thumbi *et al.*, 2014; Lange *et al.*, 2014). Although each infection may be independent, the presence of diverse parasite assemblages can result in synergistic or antagonistic effects (Lagrue and Poulin, 2008; Alizon *et al.*,

2013; Lange *et al.*, 2014; Friesen *et al.*, 2017), and the potential consequences are often very difficult to forecast (Alizon, 2013). Interactions among parasites found in the same host may shape their respective behavioural modification of the host, and ultimately its survival (de Roode *et al.*, 2004; Balmer *et al.*, 2009; Alizon, 2013; Lange *et al.*, 2014). Generally, and despite their common occurrence and potential importance, we still understand little about how shared parasites and multispecies infections shape host communities.

In spite of increasing evidence of direct and indirect effects of parasite-induced modifications of host interactions (Park, 1948; Holt and Lawton, 1994; Jaenike, 1995; Tompkins *et al.*, 2000, 2001; Bollache *et al.*, 2001; Rivero and Ferguson, 2003; Reisinger and Lodge, 2016; Vivas Muñoz *et al.*, 2017; Friesen *et al.*, 2018), most have been studied on a smaller scale, focusing on two host species with one shared parasite. Host–parasite–community dynamics in natural ecosystems are far more complex and difficult to predict. The strength of host inter- and intraspecific competition, the variability in host vulnerability to infections by multiple parasites and the intensity of parasite transmission all affect the outcome of parasite-mediated competition (Hatcher and Dunn, 2011). The interplay of competition with other factors, such as reproduction and predation, may lead to outcomes other than those predicted by studying these impacts alone. For example, *Hymenolepis diminuta* (cestode) reduces the fitness of the red flour beetle, *Tribolium castaneum*, under high but not low intraspecific competition (Yan and Stevens, 1995). Despite extensive modelling of the role of parasites in structuring and shaping ecosystems (Anderson and May, 1981; Holt and Pickering, 1985; Begon *et al.*, 1992; Begon and Bowers, 1994; Yan, 1996; Greenman and Hudson, 1999, 2000; Lafferty *et al.*, 2008; Hatcher and Dunn, 2011; Thieltges *et al.*, 2013; Sieber *et al.*, 2013; Rabajante *et al.*, 2015; Vannatta and Minchella, 2018), empirical studies examining both multi-species infections and how parasites modify interactions among hosts are still rare. Thus, there is a strong need for empirically controlled multi-species, multigenerational experiments to properly understand the role parasites play from a community perspective. We investigated how parasites affect community structure and dynamics using multiple mesocosms with four host species and four parasite species from a well-studied benthic lake community, controlling for the relative exposure to parasites. The relatively short life spans of the host species in this system provided an opportunity to examine the role of parasite mediation across multiple generations. The host species are also important food sources for many consumers within the ecosystem and serve as intermediate hosts to a variety of parasites. In addition, all four host species compete for resources and may consume each other (intra-guild predation), which made the selected community ideal for studying parasite-mediated interspecific interactions (Chadderton *et al.*, 2003; Chapman *et al.*, 2011). All parasites and their hosts in this system are well studied (Poulin, 2001; Lefebvre *et al.*, 2005; Lagrue and Poulin, 2008, 2015; Luque *et al.*, 2010; Rauque *et al.*, 2011), which allowed us to integrate prior research with this current study. If parasites modulate community dynamics, we expected to see species-specific differences in host fecundity, recruitment and especially in host relative abundances over time.

## Materials and methods

### Study system and sample collection

Two amphipod species (*Paracalliope fluviatilis* and *Paracorophium excavatum*) and two isopod species (*Austridotea annectens* and *Austridotea lacustris*) are commonly found in New Zealand lake

ecosystems. All four species compete with each other for resources, share a variety of macroparasites in different combinations, and the two isopods may prey on the two amphipods (Holton, 1984; Lagrue and Poulin, 2007; Friesen *et al.*, 2017). Two trematode species are present in the system: *Coitocaecum parvum* infects both amphipod species and *Maritrema poulini* infects both amphipods as well as *A. annectens*. *Paracalliope fluviatilis* also serves as an intermediate host to the fish acanthocephalan, *Acanthocephalus galaxii*, whereas *P. excavatum* is the sole intermediate host of the fish nematode *Hedruris spinigera*. Note that *M. poulini* has also been found in *A. lacustris* but at extremely low prevalence (Presswell *et al.*, 2014; Friesen *et al.*, 2018). The overall structure of this study system is outlined in Fig. 1.

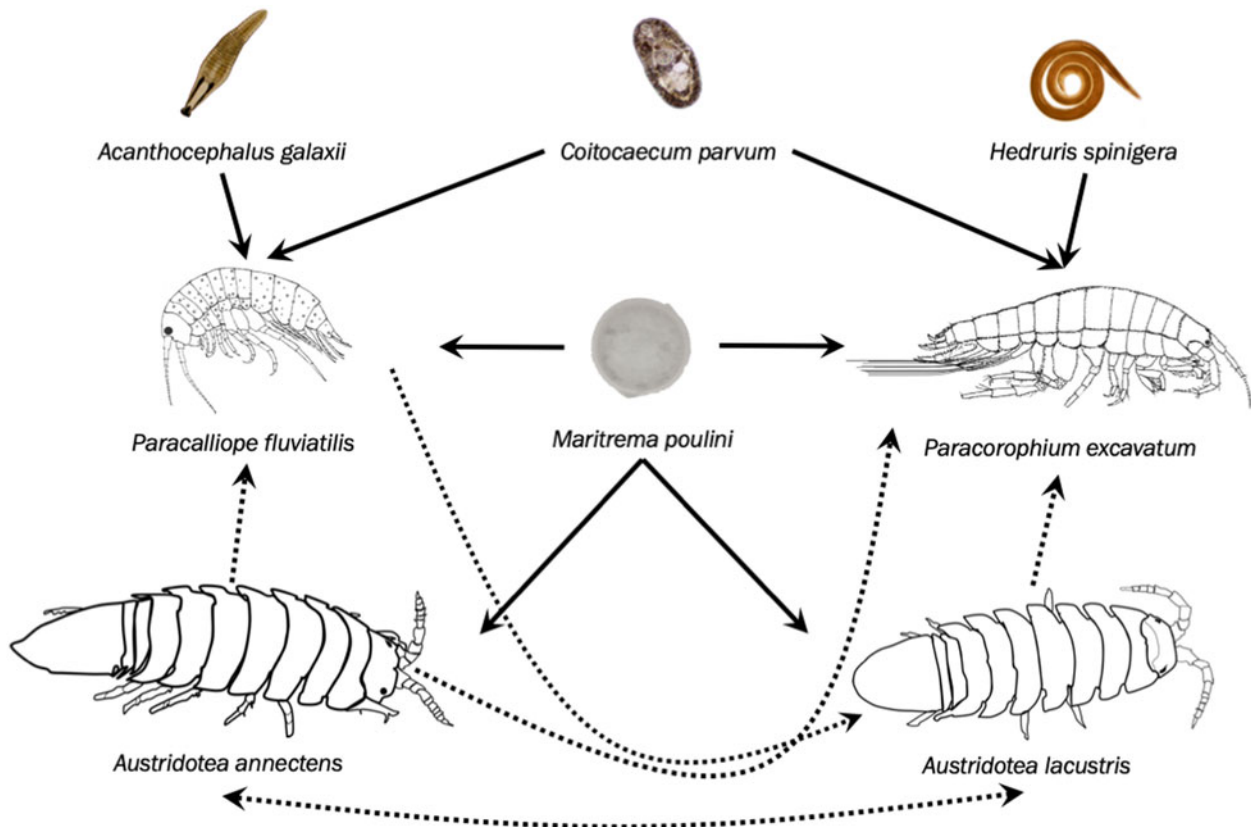
*Maritrema poulini* (Microphallidae) uses waterfowl (definitive hosts), the New Zealand mudsnail, *Potamopyrgus antipodarum* (Gray 1843; first intermediate host) and isopods (*A. annectens* or *A. lacustris*) or amphipods (*P. excavatum* or *P. fluviatilis*) (second intermediate hosts; Presswell *et al.*, 2014). The latter are infected by transmission stages known as cercariae that penetrate through their exoskeleton after being released from the snail host. *Coitocaecum parvum* (Opecoelidae) has a similar life cycle although it uses fish as definitive hosts (Lagrue and Poulin, 2007). As all four invertebrates serve as intermediate hosts to *M. poulini* and it is possible to successfully replicate the parasite transmission process in a mesocosm setting, this trematode was the focal parasite in our low and high exposure treatments.

*Hedruris spinigera* is a nematode parasite found exclusively in the amphipod *P. excavatum*; it is transmitted to fish definitive hosts through predation of infected amphipods (Luque *et al.*, 2010; Ruiz-Daniels *et al.*, 2012). Similarly, the acanthocephalan *A. galaxii* uses fish as definitive hosts. In both parasite species, reproduction occurs in the fish digestive tract and eggs are passed out in host feces (Hine, 1977). Amphipods become infected when accidentally ingesting parasite eggs (Hine, 1977; Rauque *et al.*, 2011). Both of these species are found in very low prevalence in their natural habitat (Lagrue and Poulin, 2008; Ruiz-Daniels *et al.*, 2012; Friesen *et al.*, 2017). Their life histories make it difficult to successfully replicate natural transmission in the laboratory. We also could not manipulate exposure to *C. parvum* due to seasonal unavailability of infected snails.

We collected samples of amphipods, isopods and snails (*P. antipodarum*, as the source of the parasite *M. poulini*) from the littoral zone of Lake Waihola, South Island, New Zealand (46°01'14S, 170°05'05E) between April and May 2017. No permits were required for this work. The authors assert that all procedures contributing to this work comply with the ethical standards of the relevant national and institutional guides on the care and use of laboratory animals. Amphipods and *A. annectens* isopods were caught using dip-nets (net width 2 mm), sieved to isolate animals and transported to the laboratory in lake water. *Austridotea lacustris* isopods were collected by hand underneath large rocks near the shoreline. Due to the nature of sampling, no amphipod or isopod smaller than 2 mm in total body length was collected. Mud snails *P. antipodarum* were also collected from macrophytes, sediment and stones along the shoreline of Lake Waihola using a dip net and by hand. Amphipods and isopods were maintained separately by species in 10 L tanks containing aerated water. Animals were kept in the same room ( $T = 15 \pm 3$  °C), they were housed with aquatic plants (*Myriophyllum triphyllum* and *Elodea canadensis*) as a food source and maintained under a controlled photoperiod (12 h dark and light).

### Snail infections

Infected snails were used as a source of parasites that were introduced into experimental mesocosms. To determine the infection



**Fig. 1.** Structure of the freshwater crustacean community showing the four larval parasite species and which of the four crustacean hosts they infect. Amphipod images (*Paracalliope fluviatilis* and *Paracorophium excavatum*) modified from Chapman *et al.* (2011). Solid lines represent parasite–host relationships and dotted lines represent competitive/predatory relationships.

status of the snails, individuals were separated into 12-well tissue culture plates with ten individuals per well filled with approximately 2 mL of filtered lake water. Snails were then incubated for 3 h at 20 °C under constant light to trigger the emergence of cercariae (Hay *et al.*, 2005). Cercariae are infective free-living larval stages that are released into water from the snail host which then locate and infect a suitable second intermediate host. Cercariae were identified based on morphological features (Hechinger, 2012; Presswell *et al.*, 2014). Wells were screened for the presence of cercariae and snails from wells that contained cercariae were further separated and screened individually. All snails shedding *M. poulini* cercariae were isolated and maintained in 250 mL plastic containers until needed. A subsample of uninfected snails was haphazardly chosen and isolated for use in the low exposure tanks (i.e. low parasite prevalence). These individuals were screened one more time pre-experiment to confirm their uninfected status. All snails were screened and dissected post-experiment for further verification of infection status.

### Mesocosm experiment

We manipulated the exposure of hosts to parasites in an array of experimental mesocosms to explore their effects on the composition of communities with four species of crustaceans. High exposure tanks contained a single snail infected with *M. poulini*, as a source of infection for crustaceans, low exposure tanks received an uninfected snail to control for the presence of snails. All study species were collected from natural settings where parasites are present, and thus may have some pre-existing parasite burden. The important distinction between the two treatments was differential exposure to the additional source of *M. poulini*. Each mesocosm, in both treatment types, initially contained 20

*P. fluviatilis* individuals (approximately 50% female and 50% male based on visual identification, Friesen *et al.*, 2017), ten *P. excavatum* (sex initially unknown as it is impossible to differentiate sexes without dissection), ten *A. annectens* (near identical mixture of large and small individuals in each replicate to include a mixture of ages and sexes), five *A. lacustris* (with at least one very large, therefore mature, male per replicate) and an infected or uninfected New Zealand mudsnail, *P. antipodarum*. These relative abundances and densities of crustacean hosts roughly match those observed in nature (Lagrange *et al.*, 2015). Each mesocosm was a 14 L aquarium (AquaOne® Starter Kit, 315 length × 185.5 width × 245 mm height, glass sides with plastic base and lid). All tanks were filled with continuously aerated and aged lake water collected at least a week before the start of the experiment to ensure any parasite infective stages (cercariae) present in the water had died before the mesocosms were set up (Morley, 2012). The bottom of each mesocosm was covered with a mixture of fine sand substrate, small rocks (each approximately 10 × 5 × 2 mm), and two large rocks (approximately 80–150 × 40–100 × 30–60 mm). Each mesocosm contained the same volume of the substrate material. All substrates were fully cleaned and sanitized prior to the experiment. Aquatic plants (*M. triphyllum* and *E. canadensis*) were added to provide food (40–60 g per week). Plants were weighed to ensure equal amounts of food were added to each replicate. Prior to transfer to mesocosm replicates, all plants were rinsed with water and frozen for 24 h to ensure that no additional animals or parasite infective stages were transferred.

Mesocosms ran for 9 weeks, with a total of 36 experimental units (18 in each treatment group, low and high parasite exposure). A subsample of six mesocosms per treatment was destructively sampled every 3 weeks to monitor changes in parasite

and host population levels. Each mesocosm was supplied with weekly input of aquatic plants for food (as described above). Mesocosms were housed in the same room. Twenty *P. fluviatilis* amphipods were added weekly and two *P. excavatum* every 3 weeks to every mesocosm (regardless of treatment) to simulate the migration of fresh individuals to the community that would be observed in natural conditions. While all four host species live within the littoral zone and interact, *P. fluviatilis* lives among aquatic macrophytes, whereas the other three species spend most of their time in the benthos, often buried in the substrate (Friesen *et al.*, 2018). Although these species may exhibit movement in search of resources or mates, they consistently re-settle on or very near their prior location (Friesen *et al.*, 2018). All individuals added came from the same location as the original crustaceans. The temperature of the room and water were recorded throughout the experiment. All tanks were under a controlled photoperiod (12 h dark and light).

During each sampling, mesocosms were disassembled by carefully removing small aliquots of water and sand substrate (250 mL), which were subsequently screened by two observers (the same throughout the experiment) with the naked eye to remove any live individuals. The few carcasses of dead crustaceans found during the process were not included in the dataset as we could not determine when or why they died (<1 carcass/tank on average was found). This process continued until the entire tank had been emptied and screened. Each live crustacean individual was placed in a 1.5 mL microcentrifuge tube with lake water until dissection. All amphipods were placed in the refrigerator ( $4 \pm 1$  °C) after collection to reduce oxygen usage and minimize mortality, and dissections took place within 72 h of collection. Ethanol was added to the tubes containing isopods for preservation and isopods were dissected within one week; unlike the amphipods, ethanol does not affect dissections and parasite identification in isopods. Each individual crustacean was measured, sexed and dissected to record numbers of parasites of each species (including those acquired naturally before the experiment and those acquired during the experiment). The total body length of each individual was determined by measuring from the anterior tip of the cephalic capsule to the posterior end of the uropods. Isopods shorter than 7–8 mm in body length were impossible to sex due to the lack of secondary sexual characters and thus considered juveniles (Chadderton *et al.*, 2003; Friesen *et al.*, 2017). For the same reasons, amphipods smaller than 1.5 mm were considered juveniles. Individuals smaller than 2 mm were considered to have hatched in the mesocosm during the experiment as individuals selected at the beginning exceeded this size threshold. Egg presence and numbers were also recorded in gravid females. The presence of precopulatory pairs, where a male is clasping a female, was also recorded (Sutcliffe, 1992). We defined prevalence as the percentage of infected hosts, abundance as the number of parasites per host including zeroes (i.e. uninfected hosts) and mean abundance as the mean number of parasites per host among a sample of hosts. For crustacean hosts, relative abundance was defined as the percentage of the total number of recovered crustacean individuals in each mesocosm belonging to each of the four species.

### Statistical analyses

Statistical analyses were performed in JMP® 12 (SAS Institute Inc, 2015) and R statistical software (<http://www.R-project.org>). We analysed differences in host species population sizes between treatments using a MANOVA (with treatment type and time the main predictors), with ANOVA as a post-hoc analysis. To correct for the inflated Type 1 error rate by using this method, a Bonferroni correction has been added. With this addition, the

adjusted  $\alpha$ -value = 0.0125. Best-fit lines were added to Figs 2 and 3 to illustrate the direction of relationship between host/relative abundance over time but do not correspond to the actual statistical analysis. Differences in sex ratios between treatments were examined using contingency analysis (with treatment type as main predictor variable). Differences in the number of eggs per female host species between treatment groups were analysed using an ANOVA. The differences in the proportion of females carrying young and the proportion of pairs between treatment groups were analysed using contingency analysis. Host species were analysed separately.

The differences in the relative abundance of the three-host species (*P. fluviatilis*, *P. excavatum* and *A. annectens*) were analysed using MANOVA (with treatment type and time the main predictors), using Pillai's Trace, as it is the most powerful and robust MANOVA statistic for general use (Gotelli and Ellison, 2004). As relative abundances add up to 100%, the rarest of the four crustaceans (*A. lacustris*) was not used in this analysis. Follow-up ANOVAs were used to determine which species accounted for observed differences. The parasite prevalence was compared between treatments using a contingency analysis, with treatment type the main predictor variable. A relationship was considered significant if the *P* value was  $\leq 0.05$ , unless a Bonferroni correction was added (as described above) and considered a trend if the *P* value was 0.05–0.10. Normality of the data was verified using the Shapiro–Wilk Test and equal variance was checked with residual plots. All tests showed a *P* value  $> 0.05$  and the samples were independent, therefore all assumptions were met in each test.

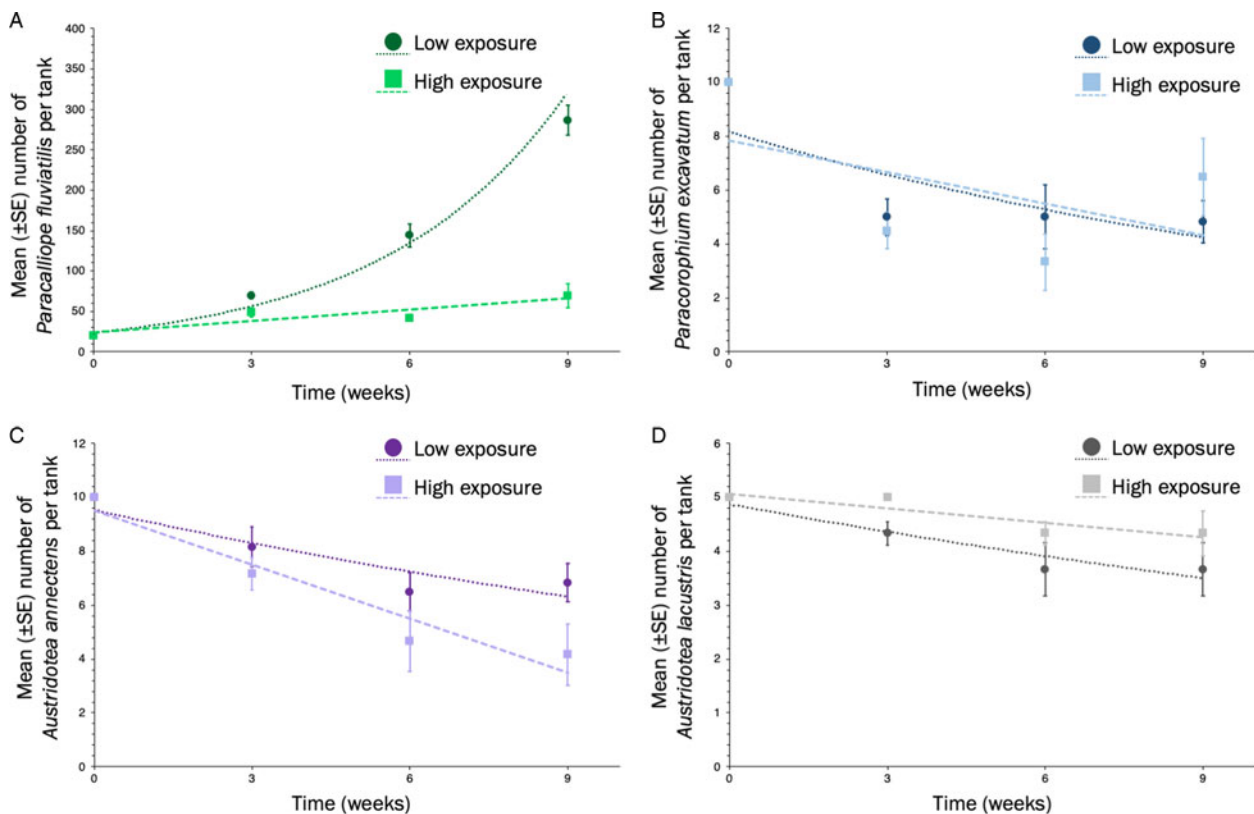
### Results

We introduced a total of 4320 *P. fluviatilis*, 504 *P. excavatum*, 360 *A. annectens*, 180 *A. lacustris* and 60 *P. antipodarum* during the experiment. Overall, when disassembling the mesocosms, we recovered 3878 *P. fluviatilis*, 176 *P. excavatum*, 227 *A. annectens* and 156 *A. lacustris*. Five species of parasites, *M. poulini*, *C. parvum*, *H. spinigera*, *A. galaxii* and a single individual of an unidentified cestode (Family Hymenolepididae), were found in invertebrate hosts.

### Host population dynamics

The absolute abundance of the four host species differed between treatments throughout all three sampling periods (MANOVA, Pillai's Trace, week: Pillai's Trace = 0.77,  $F_{4,29} = 24.1$ ,  $P < 0.0001$ , treatment: Pillai's Trace = 0.83,  $F_{4,29} = 34.6$ ,  $P < 0.0001$ ).

The amphipod *P. fluviatilis* was consistently more abundant in low parasite exposure mesocosms on all three sample dates (ANOVA, week:  $F_{1,32} = 104.2$ ,  $P < 0.0001$ , treatment:  $F_{1,32} = 133.0$ ,  $P < 0.0001$ , with a significant interactive effect,  $F_{1,32} = 52.3$ ,  $P < 0.0001$ ; Fig. 2a). Experimental populations of *P. fluviatilis* grew at an exponential rate in the low exposure treatment compared to almost no growth in the high exposure treatment (Fig. 2). The total number of *P. fluviatilis* increased beyond the number of individuals we initially introduced and added weekly in the low exposure treatment at each sampling period, indicating that recruitment occurred (i.e. 200 individuals added to each mesocosm, and a mean of  $287 \pm 19$  individuals retrieved at week 9; Fig. 2a). In two tanks sampled at week 9 in the low exposure treatment, the number of adults exceeded 200 individuals, strongly suggesting a second generation was produced in the mesocosms. The number of juveniles differed between each treatment type throughout all sampling periods, indicating higher recruitment in the low exposure treatment (Table 1).



**Fig. 2.** Comparison of amphipod and isopod species abundance per treatment group (mean  $\pm$  s.e.) over three sampling periods, (a) *Paracalliope fluviatilis*, (b) *Paracorophium excavatum*, (c) *Austridotea annectens* and (d) *Austridotea lacustris*. Values at week 0 represent the number of individuals added to the mesocosm at the beginning of the experiment. Regression lines represent the direction of relationships (best-fit lines) but not statistical relationship.

*Paracorophium excavatum* populations did not differ between high and low parasite exposure treatments throughout the experiment (ANOVA, week:  $F_{1,32} = 0.95$ ,  $P = 0.34$ , treatment:  $F_{1,32} = 0.02$ ,  $P = 0.90$ , with no interactive effect,  $F_{1,32} = 1.3$ ,  $P = 0.27$ ; Fig. 2b). Although there was considerable variation between sampling dates in the same treatment, mean number per mesocosm replicate was not different between sampling dates.

Abundance of both species of isopods appears to decrease over time in low and high exposure treatments with the isopods in the high exposure tanks increasing at a faster rate, but with a Bonferroni correction, there are no significant differences. The number of *A. annectens* per tank was consistent between treatments (ANOVA, week:  $F_{1,32} = 6.2$ ,  $P = 0.018$ , treatment:  $F_{1,32} = 6.7$ ,  $P = 0.015$ , interactive effect,  $F_{1,32} = 1.3$ ,  $P = 0.26$ ; Fig. 2c). The populations of *A. lacustris* stayed consistent over the three sampling dates, and did not differ between treatments (ANOVA, week:  $F_{1,32} = 5.6$ ,  $P = 0.025$ , treatment:  $F_{1,32} = 4.5$ ,  $P = 0.042$ , but with no interactive effect,  $F_{1,32} = 0.22$ ,  $P = 0.64$ ; Fig. 2d).

### Host community structure

The relative abundance of both amphipod species and *A. annectens* in the invertebrate community differed between the low and high parasite exposure treatments throughout the experiment (MANOVA, Pillai's Trace, week: Pillai's Trace = 0.59,  $F_{3,30} = 14.4$ ,  $P < 0.0001$ , treatment: Pillai's Trace = 0.70,  $F_{3,30} = 23.4$ ,  $P < 0.0001$ ; Fig. 3a). The relative abundance of *P. fluviatilis* was higher in low exposure mesocosms in all three sampling periods (ANOVA, week:  $F_{1,32} = 33.7$ ,  $P < 0.0001$ , treatment:  $F_{1,32} = 49.9$ ,  $P < 0.0001$ ; Fig. 3a). Conversely, the relative abundance of *P. excavatum* was higher in the high exposure mesocosms in all three sampling periods (ANOVA, week:  $F_{1,32} = 2.1$ ,  $P = 0.16$ , treatment:  $F_{1,32} = 15.2$ ,  $P = 0.0004$ ; Fig. 3a), but did not differ by week.

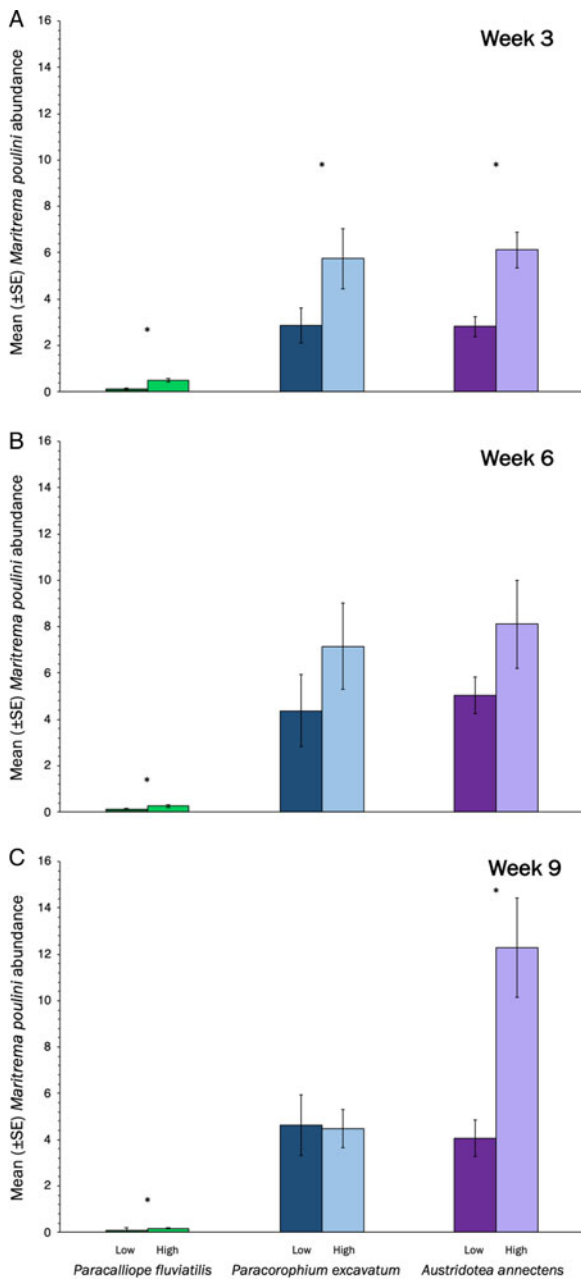
*Austridotea annectens* relative abundance was higher in the high exposure treatment in week three samples (ANOVA, week:  $F_{1,32} = 33.6$ ,  $P < 0.0001$ , treatment:  $F_{1,32} = 16.4$ ,  $P < 0.0001$ ; Fig. 3b).

The relative abundances of *A. lacustris* decreased over time and in both treatments (Fig. 3b). *Austridotea lacustris* showed the same relationship between high and low exposure treatments, with their relative abundance being higher in high exposure mesocosms throughout all three sampling periods (week 3,  $F_{1,10} = 15.1$ ,  $P = 0.003$ ; week 6,  $F_{1,10} = 38.7$ ,  $P < 0.0001$ ; week 9,  $F_{1,10} = 30.5$ ,  $P = 0.0003$ ; Fig. 3b).

### Parasite infection patterns

The highest number of individuals of *M. poulini* per host was 53 (in *P. excavatum*), ten for *C. parvum* (in *P. excavatum*) and one for both *A. galaxii* (in *P. fluviatilis*) and *H. spinigera* (in *P. excavatum*). The prevalence of *M. poulini* was higher in *P. fluviatilis* from the high exposure treatment throughout all sampling periods (Table 2). Consistently, the mean abundance of *M. poulini* was higher in individuals from the high exposure treatment throughout all the sampling periods (Fig. 4; Table 2). The prevalence of *C. parvum* in *P. fluviatilis* was highest in the high exposure tanks in week 3 and 6, but there was no difference by week 9 (Table 2). The mean abundance of *C. parvum* was also higher in the high exposure tanks in week 3, but there was no difference in week 6 or 9 (Supplementary Information Fig. S1; Table 2).

*Paracorophium excavatum* showed similar *M. poulini* prevalence in both treatments and all sampling dates (Table 2). However, the mean abundance of *M. poulini* was higher in high exposure treatments during the week 3 sampling, but did not differ in week 6 or 9, although the difference was greater in week 6 (Fig. 4; Table 2). The prevalence of *C. parvum* in *P. excavatum*



**Fig. 3.** Relative species abundance (as a percentage of the total community) of (a) the amphipods, *Paracalliope fluviatilis* and *Paracorophium excavatum*, and (b) the isopods, *Austridotea annectens* and *A. lacustris*, in both low and high exposure treatments over the 9-week trial period, with replicates sampled every 3 weeks. Sample size of six mesocosm replicates per treatment in each sampling period. Regression lines represent the direction of relationships (best-fit lines) but not statistical relationship.

was similar between low and high exposure treatments throughout all three sampling periods (Table 2). The mean abundance followed a similar pattern in the last two sampling periods, however, the mean abundance of *C. parvum* tended to be higher in the high exposure treatment in week 3 (Supplementary Information Fig. S1; Table 2).

Co-infections by *M. poulini* and *C. parvum* occurred in both amphipod species, but usually at low prevalence; they were more common in *P. fluviatilis* in the high exposure treatment during week 3 and 6, but they did not differ from the low exposure treatment in week 9 (Table 2). Further details are provided in the online Supplementary Information.

The prevalence of *M. poulini* in *A. annectens* was higher in the high exposure treatments in week 3 and 9, but not in week 6

(Table 2). The mean abundance of *M. poulini* followed the same trends, with the abundance being higher in the high exposure treatments in week 3 and 9, but only tended to be higher in week 6 (Fig. 4; Table 2). *Maritrema poulini* was found in only one *A. lacustris* from a high exposure treatment, sampled during week 3.

### Host reproduction

Fecundity, assessed as the mean number of eggs per female in each treatment (mesocosm replicates pooled), did not differ between high and low exposure treatments in *P. fluviatilis* on any of the three sampling dates (Table 2). The number of paired *P. fluviatilis* did not differ between treatments in week 3, but there were more pairs in the low exposure treatment than in the high treatment mesocosms in week 6 and 9 (Table 2). Further analyses are provided in the online Supplementary Information.

### Discussion

Elucidating the role of parasites in the structure of entire communities, and eventually ecosystems, is key to a greater understanding of the functioning and structure of ecosystems. Empirical, carefully controlled, multigenerational experiments are fundamental to reveal the impact of parasites in shaping natural systems. Our mesocosm experiment demonstrated that parasites can indeed shape their host community, impacting recruitment and relative abundance of hosts and non-host species. Throughout the experiment, the differences in both relative abundance and recruitment between low and high parasite exposure treatments were large, indicating our focal parasite, *M. poulini*, influenced community structure. Parasites can have indirect impacts on a community, through modified competitive or predatory interactions. It is very likely that modifications to these interactions also played a role in the differences observed in the communities experiencing different parasite exposure.

Both *M. poulini* and *C. parvum* appeared to have fitness consequences on the amphipod *P. fluviatilis*, based upon the results of this study. Previous work has also shown that *M. poulini* reduces the survival of this amphipod host (Friesen *et al.*, 2017). Consistently, we saw fewer *P. fluviatilis* amphipods surviving in the high exposure treatments. Interestingly, there appeared to be no difference in the mean number of eggs per female or the number of females with eggs between treatments, although previous studies have indicated *P. fluviatilis* with higher parasite abundance (*C. parvum* or *M. poulini*) were more likely to have eggs (Friesen *et al.*, 2017). This relationship was only consistently present in the low exposure treatment, suggesting other factors may be at play in the high exposure treatments. Pairing was also found to be more frequent in the low exposure mesocosms. Parasites may be mediating this relationship and affect the successful reproduction of their host (Bollache *et al.*, 2001). Parasites can interfere with male–male competition, and reduce the ability of males to form precopulatory pairs (Bollache *et al.*, 2001; Rauque *et al.*, 2011). The energetic consequences and behavioural impacts of infection may also reduce the frequency of pairing (Zohar and Holmes, 1998; Bierbower and Sparkes, 2007; Rauque *et al.*, 2011). Finally, we also saw a difference in recruitment between low and high exposure treatments. Although, we were unable to examine the impact of parasites in driving selection on the genotypes of their host (Roitberg *et al.*, 2001), their ability to affect the survival, reproduction and recruitment of *P. fluviatilis* strongly suggests that *M. poulini* impacts the amphipod's fitness, which likely has ramifications across the community.

The shifts in parasite abundance and prevalence within treatments over time were likely due to a number of factors, including

**Table 1.** Comparison of sex ratios between low and high exposure treatments throughout the three sampling periods (using contingency analysis, test statistic –  $\chi^2$ , d.f. = 1)

	Week 3				Week 6				Week 9			
	Low	High	Test statistic	<i>P</i>	Low	High	Test statistic	<i>P</i>	Low	High	Test statistic	<i>P</i>
<i>Paracalliope fluviatilis</i>												
Female:Male	1:2	1:1	7.9	<b>0.005</b>	2:3	1:1	0.87	0.35	1:2	3:4	8.4	<b>0.004</b>
Juvenile	158	47	30	<b>0.0003</b>	292	79	13	<b>0.005</b>	559	138	26	<b>0.0005</b>
Juvenile prop.	34%	24%			34%	31%			32%	33%		
<i>Paracorophium excavatum</i>												
Female:Male	4:3	1:1	0.72	0.70	4:3	1:1	2.1	0.35	1:1	1:1	5.9	0.07
Juvenile	0	0	–	–	0	0	–	–	0	8	1.0	0.34
Juvenile prop.	–	–			–	–			–	20%		
<i>Austridotea annectens</i>												
Female:Male	1:10	1:2	4.7	<b>0.03</b>	1:2	1:3	0.03	0.87	1:2	3:2	4.0	<b>0.046</b>
Juvenile	0	0	–	–	14	1	6.4	<b>0.03</b>	16	0	6	<b>0.03</b>
Juvenile prop.	–	–			36%	3.6%			38%	–		
<i>Austridotea lacustris</i>												
Female:Male	1:3	2:3	1.7	0.20	4:3	2:3	1.0	0.31	1:1	2:1	1.2	0.28
Juvenile	0	0	–	–	1	0	1.0	0.34	0	0	–	–
Juvenile prop.	–	–			4.5%	–			–	–		

Abundance of juveniles, or individuals with indeterminate sex due to immaturity (combined), were compared between treatments throughout sampling periods (using analysis of variance, test statistic and d.f. –  $F_{1,10}$ ). Proportion of juveniles in each treatment type. Significant differences are bolded.

**Table 2.** Differences in reproductive measures and parasite infections between low and high exposure treatments throughout the three sampling periods

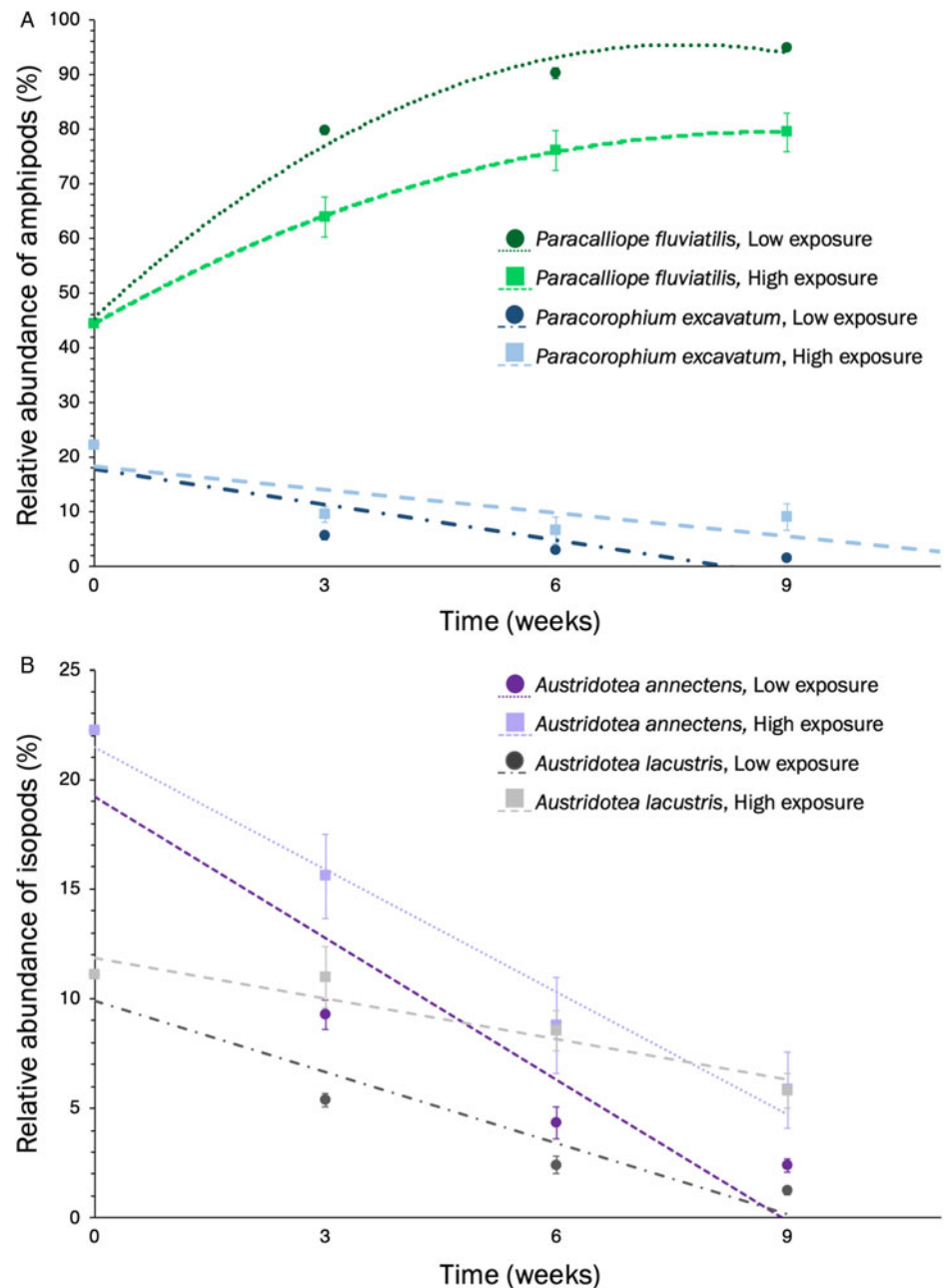
Species	Week 3		Week 6		Week 9	
	Test statistic	P	Test statistic	P	Test statistic	P
<i>Paracalliope fluviatilis</i>						
Fecundity						
Mean eggs/female	$F_{1,10} = 44.7$	<b>&lt;0.0001</b>	$F_{1,10} = 5.5$	<b>0.041</b>	$F_{1,10} = 1.02$	0.34
Presence of eggs	$\chi^2 = 1.8$	0.18	$\chi^2 = 0.3$	0.56	$\chi^2 = 1.58$	0.21
Pairing	$\chi^2 = 1.4$	0.23	$\chi^2 = 7.9$	<b>0.0049</b>	$\chi^2 = 6.7$	<b>0.0096</b>
Parasite prevalence						
<i>A. galaxii</i>	$\chi^2 = 8.5$	<b>0.0036</b>	$\chi^2 = 1.5$	0.22	$\chi^2 = 3.5$	0.08*
<i>M. poulini</i>	$\chi^2 = 42$	<b>&lt;0.0001</b>	$\chi^2 = 14$	<b>0.0002</b>	$\chi^2 = 23$	<b>&lt;0.0001</b>
<i>C. parvum</i>	$\chi^2 = 29$	<b>&lt;0.0001</b>	$\chi^2 = 3.8$	<b>0.05</b>	$\chi^2 = 1.5$	0.22
<i>M. poulini</i> and <i>C. parvum</i>	$\chi^2 = 18$	<b>&lt;0.0001</b>	$\chi^2 = 7.4$	<b>0.007</b>	$\chi^2 = 2.6$	0.11
Parasite abundance						
<i>A. galaxii</i>	$F_{1,612} = 5.2$	<b>0.022</b>	$F_{1,1113} = 0.87$	0.35	$F_{1,2135} = 1.7$	0.19
<i>M. poulini</i>	$F_{1,612} = 39$	<b>&lt;0.0001</b>	$F_{1,1113} = 9.88$	<b>0.0017</b>	$F_{1,2135} = 16.7$	<b>&lt;0.0001</b>
<i>C. parvum</i>	$F_{1,612} = 36$	<b>&lt;0.0001</b>	$F_{1,1113} = 2.1$	0.15	$F_{1,2135} = 1.8$	0.19
<i>Paracorophium excavatum</i>						
Fecundity						
Mean eggs/female	$F_{1,55} = 0.0056$	0.94	–	–	–	–
Presence of eggs	$\chi^2 = 0.006$	0.94	–	–	–	–
Parasite prevalence						
<i>H. spinigera</i>	–	–	–	–	$\chi^2 = 3.5$	0.06*
<i>M. poulini</i>	$\chi^2 = 1.5$	0.22	$\chi^2 = 2.1$	0.15	$\chi^2 = 1.5$	0.22
<i>C. parvum</i>	$\chi^2 = 1.5$	0.23	$\chi^2 = 0.48$	0.49	$\chi^2 = 0.70$	0.40
<i>M. poulini</i> and <i>C. parvum</i>	$\chi^2 = 1.4$	0.24	$\chi^2 = 0.44$	0.51	$\chi^2 = 1.5$	0.23
Parasite abundance						
<i>H. spinigera</i>	–	–	–	–	$F_{1,66} = 2.8$	0.099*
<i>M. poulini</i>	$F_{1,55} = 3.9$	<b>0.05</b>	$F_{1,48} = 1.3$	0.26	$F_{1,66} = 0.012$	0.92
<i>C. parvum</i>	$F_{1,55} = 3.5$	0.065*	$F_{1,48} = 0.77$	0.38	$F_{1,66} = 0.2$	0.65
<i>Austridotea annectens</i>						
Parasite prevalence						
<i>M. poulini</i>	$\chi^2 = 19$	<b>&lt;0.0001</b>	$\chi^2 = 0.58$	0.45	$\chi^2 = 14$	<b>0.0002</b>
Parasite abundance						
<i>M. poulini</i>	$F_{1,90} = 15$	<b>0.0002</b>	$F_{1,65} = 2.73$	0.1	$F_{1,64} = 18$	<b>&lt;0.0001</b>
<i>Austridotea lacustris</i>						
Fecundity						
Mean eggs/female	–	–	$\chi^2 = 0.3$	0.59	$\chi^2 = 1.1$	0.31
Presence of eggs	–	–	$F_{1,45} = 0.03$	0.86	$F_{1,46} = 1.6$	0.2
Pairing	–	–	$\chi^2 = 3.2$	0.07*	$\chi^2 = 3.2$	0.07*

Differences in the presence of eggs, pairing and parasite prevalence were examined using contingency analysis ( $d.f. = 1$ ). Variation in the mean number of eggs per female and parasite abundance were examined using analysis of variance. Significant differences are bolded, and trends marked with \*.

variation in *M. poulini* cercarial output, host density and mainly differential survival rates of infected vs uninfected hosts. The decrease in *M. poulini* abundance and prevalence in *P. fluviatilis* over time in both treatments may be due to parasite-induced mortality in combination with a higher number of hosts, diluting the actual number of parasites reaching each host. In the low exposure treatment, recruitment and immigration (20 *P. fluviatilis* added weekly per tank of both exposures) were high enough to continue

to increase the overall host abundance, but in the high exposure treatment, *P. fluviatilis* populations did not increase in size over time despite recruitment and immigration. Interestingly, in the other amphipod, *P. excavatum*, the difference in *M. poulini* abundance between low and high exposure treatments decreased over time, with mean parasite abundance nearly identical in the last sampling period, yet host population size remained roughly constant. The relationship is not consistent with what we would





**Fig. 4.** Mean abundance of *Maritrema poulini* in three host species, *Paracalliope fluviatilis*, *Paracorophium excavatum* and *Austridotea annectens*, in both low and high treatments through the sampling periods (a) week 3, (b) week 6, and (c) week 9. Sample size of 6 mesocosms per treatment per sampling period.

expect from greater parasite infections in the high exposure treatment mesocosms, but no additional mortality between treatments was observed. Absence of parasite-induced mortality in this larger-bodied host is the most likely explanation (Friesen *et al.*, 2017).

The differential parasite virulence between the two amphipod host species was accentuated within these communities. The population of *P. excavatum* did not fluctuate with parasite exposure, while the population of *P. fluviatilis* was strongly impacted by higher exposure to the same parasite species (Friesen *et al.*, 2017). The classical study by Park (1948) demonstrated that infection by a shared parasite, *Adelina tribolii*, reversed the outcome of competition between two host species (*T. castaneum* and *T. confusum*). Our amphipods showed a parallel association (Fig. 2a), where higher exposure to a shared parasite altered the relative abundance of each species, with the abundance of *P. fluviatilis* decreasing, while *P. excavatum* increased.

Impacts of parasites on the isopod *A. annectens* were subtler than the dramatic differences seen in the amphipod *P. fluviatilis*. The absolute abundance of *A. annectens* initially was similar

between the two treatments, but overtime populations decreased in the higher exposure treatments. Although we have not previously been able to measure an energetic cost to infection in *A. annectens*, a higher abundance of *M. poulini* in this isopod increases their activity levels (Friesen *et al.*, 2017). The combination of dietary stress, possibly due to decreasing availability of *P. fluviatilis*, with higher parasite abundance may have eventually led to higher mortality of *A. annectens* (Esch *et al.*, 1975; Lafferty and Kuris, 1999; Coors and De Meester, 2008; Goulson *et al.*, 2015). Conversely, the abundance of the other isopod, *A. lacustris*, became higher in the high exposure treatments. The higher abundance of this isopod in the higher exposure treatments may be linked to competitive release as populations of its competitor, *A. annectens* start to decrease.

Parasite-mediation of pairing success occurred in two of our host species, *A. lacustris* and *P. fluviatilis*. The direct role of parasites in altering pairing success has been previously documented in other systems (e.g. Zohar and Holmes, 1998; Bollache *et al.*, 2001), and may play a role in reduced pairing by *P. fluviatilis*. However, as *A. lacustris* is a very rare host (<1%; Goellner

*et al.*, 2018), the difference in pairing success in this species may be due to indirect effects of infected competitors. Past studies have suggested that *M. poulini* in *A. annectens* affects the distribution of *A. lacustris*, and mediates the competition between these species (Friesen *et al.*, 2018). Behavioural alterations in *A. annectens*, when infected by *M. poulini*, including increased activity levels and possible changes to their aggressiveness, are likely behind the altered microhabitat preferences of *A. lacustris* (Friesen *et al.*, 2017, 2018). It is possible that the same changes in behaviour may reduce pairing frequency in *A. lacustris*, eventually having longer-term consequences in terms of reduced mating success and recruitment in communities with high parasite abundance, although this may be balanced by high survival rates of this non-host species.

The relative abundance of species within our mesocosms fluctuated between the two treatments, showing that the relative abundance of host species was altered by parasite mediation within the system. Differences between communities were already evident on the first sampling date and became much more pronounced as the experiment continued. Both isopod species and *P. excavatum* achieved a higher proportion of the community when the exposure to parasites was higher. The asymmetrical impacts of *M. poulini* on the different crustacean hosts had consequences for the structuring of the entire community. In the long run, as the amphipod *P. fluviatilis* is numerically more abundant, parasites may well promote host co-existence (Hatcher and Dunn, 2011).

Seasonal and temporal fluctuations in *M. poulini* prevalence in its natural host community may in turn have cascading effects on host community composition and dynamics. Direct and indirect consequences of parasite mediation will vary in time, possibly leading to large fluctuations in host populations. Temporal variations in parasite communities have been shown to impact host demographics in other systems (Grunberg and Sukhdeo, 2017). It is thus likely that they will affect top-down and bottom-up trophic interactions within this community (Hunter and Price, 1992). Changes in invertebrate host populations have implications for other species such as fish and birds that use crustaceans as important food resources but are also definitive hosts to many parasites. These changes likely will also have consequences on bottom-up interactions, such as nutrient cycling and aquatic primary production (Hunter and Price, 1992).

The experimental manipulation of a single focal parasite in our study system altered community structure, through a multitude of both direct and indirect effects as well as interactions between hosts. Variable exposure to the trematode *M. poulini* influenced the relative abundance of these hosts. Although we were able to examine the role parasites played in the ecology of these specific intermediate hosts, in natural systems they do not occur alone. The presence of predators, and many other abiotic factors, such as temperature and salinity, add complexity to these relationships (Kunz and Pung, 2004; Médoc *et al.*, 2009; Larsen *et al.*, 2011).

Parasites play a vital role in community ecology, yet their role is often ignored or oversimplified (Hatcher *et al.*, 2012). Although parasites may be responsible for negative impacts on their hosts, they also have the ability to affect interspecific interactions and community dynamics, ultimately increasing biodiversity, network stability and mediating species coexistence (Mouritsen and Poulin, 2005; Hudson *et al.*, 2006; Hatcher *et al.*, 2012, 2014; Médoc *et al.*, 2017). The role of parasites in a system can be similar to that of regulating predators; parasites can shape and regulate community structure. Overall, just like producers and free-living consumers, parasites are an integral part of any ecosystem, and as this study clearly demonstrates, omitting parasites from ecosystem studies results in an incomplete picture of community dynamics.

**Supplementary material.** The supplementary material for this article can be found at <https://doi.org/10.1017/S0031182019001483>.

**Acknowledgements.** Field and laboratory assistance was provided by Bronwen Presswell, Jerusha Bennett, Christian Selbach and Brandon Ruehle. Special thanks to Rita Grunberg, Peter Morin, Kelsey O'Brien, Bronwen Presswell and Christian Selbach for comments and advice on drafts of this manuscript. We are also grateful to two anonymous reviewers for their constructive comments and suggestions on previous versions of the manuscript.

**Financial support.** Financial support for this project was provided by the Department of Zoology, University of Otago.

**Conflict of interest.** None.

**Ethical standards.** The authors assert that all procedures contributing to this work comply with the ethical standards of the relevant national and institutional guides on the care and use of laboratory animals.

## References

- Alizon S (2013) Co-infection and super-infection models in evolutionary epidemiology. *Interface Focus* 3, 1–13.
- Alizon S, de Roode JC and Michalakos Y (2013) Multiple infections and the evolution of virulence. *Ecology Letters* 16, 556–567.
- Anderson RM and May RM (1981) The population dynamics of microparasites and their invertebrate hosts. *Philosophical Transactions of the Royal Society B: Biological Sciences* 291, 451–524.
- Balmer O, Stearns SC, Schötzau A and Brun R (2009) Intraspecific competition between co-infecting parasite strains enhances host survival in African trypanosomes. *Ecology* 90, 3367–3378.
- Barber I, Huntingford FA and Crompton DWT (1995) The effect of hunger and cestode parasitism on the shoaling decisions of small freshwater fish. *Journal of Fish Biology* 47, 524–536.
- Begon M and Bowers RG (1994) Host-host-pathogen models and microbial pest control: the effect of host self regulation. *Journal of Theoretical Biology* 169, 275–287.
- Begon M, Bowers RG, Kadianakis N and Hodgkinson DE (1992) Disease and community structure: the importance of host self-regulation in a host-host-pathogen model. *American Naturalist* 139, 1131–1150.
- Bierbower SM and Sparkes TC (2007) Parasite-related pairing success in an intermediate host, *Caecidotea intermedius* (Isopoda): effects of male behavior and reproductive physiology. *Journal of Parasitology* 93, 445–449.
- Bollache L, Gambade G and Cézilly F (2001) The effects of two acanthocephalan parasites, *Pomphorhynchus laevis* and *Polymorphus minutus*, on pairing success in male *Gammarus pulex* (Crustacea: Amphipoda). *Behavioral Ecology and Sociobiology* 49, 296–303.
- Bollache L, Rigaud T and Cézilly F (2002) Effects of two acanthocephalan parasites on the fecundity and pairing status of female *Gammarus pulex* (Crustacea: Amphipoda). *Journal of Invertebrate Pathology* 79, 102–110.
- Chadderton WL, Ryan PA and Winterbourn MJ (2003) Distribution, ecology, and conservation status of freshwater Idoteidae (Isopoda) in southern New Zealand. *Journal of the Royal Society of New Zealand* 33, 529–548.
- Chapman MA, Lewis MH and Winterbourn MJ (2011) Chapter 11: Amphipoda. In *Guide to Freshwater Crustacea of New Zealand*. Christchurch, NZ: Freshwater Sciences Society, pp. 132–143.
- Coors A and De Meester L (2008) Synergistic, antagonistic, and additive effects of multiple stressors: predation threat, parasitism, and pesticide exposure in *Daphnia magna*. *Journal of Applied Ecology* 45, 1820–1828.
- de Roode JC, Culleton R, Cheesman SJ, Carter R and Read AF (2004) Host heterogeneity is a determinant of competitive exclusion or coexistence in genetically diverse malaria infections. *Proceedings of the Royal Society B: Biological Sciences* 271, 1073–1080.
- Esch GW, Whitfield Gibbons J, Bourque JE, Gibbons JW and Bourque JE (1975) An analysis of the relationship between stress and parasitism. *American Midland Naturalist* 93, 339–353.
- Fredensborg BL, Mouritsen KN and Poulin R (2004) Intensity-dependent mortality of *Paracalliope novizealandiae* (Amphipoda: Crustacea) infected by a trematode: experimental infections and field observations. *Journal of Experimental Marine Biology and Ecology* 311, 253–265.
- Friesen OC, Poulin R and Lagrue C (2017) Differential impacts of shared parasites on fitness components among competing hosts. *Ecology and Evolution* 7, 4682–4693.

- Friesen OC, Poulin R and Lagrue C (2018) Parasite-mediated microhabitat segregation between congeneric hosts. *Biology Letters* **14**, 20170671.
- Goellner S, Selbach C and Friesen OC (2018) Do behavioural defence mechanisms explain different levels of trematode infections in congeneric hosts? *Journal of Helminthology* **93**, 379–382.
- Gotelli NJ and Ellison AM (2004) The analysis of multivariate data. In Andrew D. Sinauer (ed) *A Primer of Ecological Statistics*. Sunderland, MA: Sinauer Associates Inc, pp. 383–446.
- Goulson D, Nicholls E, Botías C and Rotheray EL (2015) Bee declines driven by combined stress from parasites, pesticides, and lack of flowers. *Science* **347**, 1255957.
- Greenman JV and Hudson PJ (1999) Host exclusion and coexistence in apparent and direct competition: an application of bifurcation theory. *Theoretical Population Biology* **56**, 48–64.
- Greenman JV and Hudson PJ (2000) Parasite-mediated and direct competition in a two-host shared macroparasite system. *Theoretical Population Biology* **57**, 13–34.
- Grunberg RL and Sukhdeo MVK (2017) Temporal community structure in two gregarines (*Rotundula gammari* and *Heliospora longissima*) co-infecting the amphipod *Gammarus fasciatus*. *Journal of Parasitology* **103**, 6–13.
- Hatcher MJ and Dunn AM (2011) *Parasites and Competitors*, 1st Edn. Cambridge: Cambridge University Press.
- Hatcher MJ, Dick JTA and Dunn AM (2012) Diverse effects of parasites in ecosystems: linking interdependent processes. *Frontiers in Ecology and the Environment* **10**, 186–194.
- Hatcher MJ, Dick JTA and Dunn AM (2014) Parasites that change predator or prey behaviour can have keystone effects on community composition. *Biology Letters* **10**, 20130879–20130879.
- Hay KB, Fredensborg BL and Poulin R (2005) Trematode-induced alterations in shell shape of the mud snail *Zeacumantus subcarinatus* (Prosobranchia: Batillariidae). *Journal of the Marine Biological Association of the United Kingdom* **85**, 989–992.
- Hechinger RF (2012) Faunal survey and identification key for the trematodes (Platyhelminthes: Digenea) infecting *Potamopyrgus antipodarum* (Gastropoda: Hydrobiidae) as first intermediate host. *Zootaxa* **27**, 1–27.
- Hine PM (1977) *Acanthocephalus galaxii* n.sp. Parasitic in *Galaxias maculatus* (Jenyns, 1842) in the Waimeha Stream, New Zealand. *Journal of the Royal Society of New Zealand* **7**, 51–57.
- Holt RD (1977) Predation, apparent competition, and the structure of prey communities. *Theoretical Population Biology* **229**, 197–229.
- Holt RD and Pickering J (1985) Infectious disease and species coexistence: a model of Lotka-Volterra Form. *American Naturalist* **126**, 196–211.
- Holt RD and Lawton JH (1994) The ecological consequences of shared natural enemies. *Annual Review of Ecology and Systematics* **25**, 495–520.
- Holton AL (1984) Progenesis as a means of abbreviating life histories in two New Zealand trematodes, *Coitocaecum parvum* Crawford, 1945 and *Stegodexamene anguillae* MacFarlane, 1951. *Mauri Ora* **11**, 63–70.
- Hudson PJ and Greenman JV (1998) Competition mediated by parasites: biological and theoretical progress. *Trends in Ecology & Evolution* **13**, 387–390.
- Hudson PJ, Dobson AP and Lafferty KD (2006) Is a healthy ecosystem one that is rich in parasites? *Trends in Ecology & Evolution* **21**, 381–385.
- Hughes WOH and Boomsma JJ (2004) Let your enemy do the work: within-host interactions between two fungal parasites of leaf-cutting ants. *Proceedings of the Royal Society B: Biological Sciences* **271**, S104–S106.
- Hunter MD and Price PW (1992) Playing chutes and ladders: heterogeneity and the relative roles of bottom-up and top-down forces in natural communities. *Ecology* **73**, 724–732.
- Jaenike J (1995) Interactions between mycophagous *Drosophila* and their nematode parasites: from physiological to community ecology. *Oikos* **72**, 235–244.
- Kiesecker JM and Blaustein AR (1999) Pathogen reverses competition between larval amphibians. *Ecology* **80**, 2442–2448.
- Klein SL (2005) Parasite manipulation of host behavior: mechanisms, ecology, and future directions. *Behavioural Processes* **68**, 219–221.
- Kunz AK and Pung OJ (2004) Effects of *Microphallus turgidus* (Trematoda: Microphallidae) on the predation, behavior, and swimming stamina of the grass shrimp *Palaemonetes pugio*. *Journal of Parasitology* **90**, 441–445.
- Lafferty KD and Kuris AM (1999) How environmental stress affects the impacts of parasites. *Limnology and Oceanography* **44**, 925–931.
- Lafferty KD, Allesina S, Arim M, Briggs CJ, De Leo G, Dobson AP, Dunne JA, Johnson PTJ, Kuris AM, Marcogliese DJ, Martinez ND, Memmott J, Marquet PA, McLaughlin JP, Mordecai EA, Pascual M, Poulin R and Thielges DW (2008) Parasites in food webs: the ultimate missing links. *Ecology Letters* **11**, 533–546.
- Lagrue C and Poulin R (2007) Life cycle abbreviation in the trematode *Coitocaecum parvum*: can parasites adjust to variable conditions? *Journal of Evolutionary Biology* **20**, 1189–1195.
- Lagrue C and Poulin R (2008) Intra- and interspecific competition among helminth parasites: effects on *Coitocaecum parvum* life history strategy, size and fecundity. *International Journal for Parasitology* **38**, 1435–1444.
- Lagrue C and Poulin R (2015) Local diversity reduces infection risk across multiple freshwater host-parasite associations. *Freshwater Biology* **60**, 2445–2454.
- Lagrue C, Kaldonski N, Perrot-Minnot MJ, Motreuil S and Bollache L (2007) Modification of hosts' behavior by a parasite: field evidence for adaptive manipulation. *Ecology* **88**, 2839–2847.
- Lagrue C, Poulin R and Cohen JE (2015) Parasitism alters three power laws of scaling in a metazoan community: Taylor's law, density-mass allometry, and variance-mass allometry. *Proceedings of the National Academy of Sciences* **112**, 1791–1796.
- Lange B, Reuter M, Ebert D, Muylaert K and Decaestecker E (2014) Diet quality determines interspecific parasite interactions in host populations. *Ecology and Evolution* **4**, 3093–3102.
- Larsen MH, Jensen KT and Mouritsen KN (2011) Climate influences parasite-mediated competitive release. *Parasitology* **138**, 1436–1441.
- Lefebvre F, Fredensborg BL, Armstrong A, Hansen EK and Poulin R (2005) Assortative pairing in the amphipod *Paracalliope fluviatilis*: a role for parasites? *Hydrobiologia* **545**, 65–73.
- Lefevre T, Lebarbenchon C, Gauthier-Clerc M, Missé D, Poulin R and Thomas F (2009) The ecological significance of manipulative parasites. *Trends in Ecology & Evolution* **24**, 41–48.
- Luque JL, Vieira FM, Herrmann K, King TM, Poulin R and Lagrue C (2010) New evidence on a cold case: trophic transmission, distribution and host-specificity in *Hedruris spinigera* (Nematoda: Hedruridae). *Folia Parasitologica* **57**, 223–231.
- MacNeil C, Fielding NJ, Dick JTA, Briffa M, Prenter J, Hatcher MJ and Dunn AM (2003) An acanthocephalan parasite mediates intraguild predation between invasive and native freshwater amphipods (Crustacea). *Freshwater Biology* **48**, 2085–2093.
- Médoc V, Rigaud T, Bollache L and Beisel JN (2009) A manipulative parasite increasing an antipredator response decreases its vulnerability to a nonhost predator. *Animal Behaviour* **77**, 1235–1241.
- Médoc V, Firmat C, Sheath DJ, Pegg J, Andreou D and Britton JR (2017) Parasites and biological invasions: predicting ecological alterations at levels from individual hosts to whole networks. In *Advances in Ecological Research*, Academic Press., pp. 1–54. doi: 10.1016/bs.aecr.2016.10.003.
- Mikheev VN, Pasternak AF, Taskinen J and Valtonen ET (2010) Parasite-induced aggression and impaired contest ability in a fish host. *Parasites & Vectors* **3**, 1–8.
- Morley NJ (2012) Cercariae (Platyhelminthes: Trematoda) as neglected components of zooplankton communities in freshwater habitats. *Hydrobiologia* **691**, 7–19.
- Mouritsen KN and Poulin R (2003) Parasite-induced trophic facilitation exploited by a non-host predator: a manipulator's nightmare. *International Journal for Parasitology* **33**, 1043–1050.
- Mouritsen KN and Poulin R (2005) Parasites boosts biodiversity and changes animal community structure by trait-mediated indirect effects. *Oikos* **108**, 344–350.
- Park T (1948) Interspecies competition in populations of *Tribolium confusum* Duval and *Tribolium castaneum* Herbst. *Ecological Monographs* **18**, 265–307.
- Pedersen AB and Fenton A (2007) Emphasizing the ecology in parasite community ecology. *Trends in Ecology & Evolution* **22**, 133–139.
- Poulin R (1995) 'Adaptive' changes in the behaviour of parasitized animals: a critical review. *International Journal for Parasitology* **25**, 1371–1383.
- Poulin R (2001) Progenesis and reduced virulence as an alternative transmission strategy in a parasitic trematode. *Parasitology* **123**, 623–630.
- Presswell B, Blasco-Costa I and Kostadinova A (2014) Two new species of *Maritrema* nicoll, 1907 (Digenea: Microphallidae) from New Zealand: morphological and molecular characterisation. *Parasitology Research* **113**, 1641–1656.
- Price PW, Westoby M, Rice B, Atsatt PR, Fritz RS, Thompson JN and Mobley K (1986) Parasite mediation in ecological interactions. *Annual Review of Ecology and Systematics* **17**, 487–505.

- Rabajante JF, Tubay JM, Uehara T, Morita S, Ebert D and Yoshimura J (2015) Red Queen dynamics in multi-host and multi-parasite interaction system. *Scientific Reports* **5**, 1–7.
- Rauque CA, Paterson RA, Poulin R and Tompkins DM (2011) Do different parasite species interact in their effects on host fitness? A case study on parasites of the amphipod *Paracalliope fluviatilis*. *Parasitology* **138**, 1176–1182.
- Read AF (1988) Sexual selection and the role of parasites. *Trends in Ecology & Evolution* **3**, 97–102.
- Reisinger LS and Lodge DM (2016) Parasites alter freshwater communities in mesocosms by modifying invasive crayfish behavior. *Ecology* **97**, 1497–1506.
- Reisinger LS, Petersen I, Hing JS, Davila RL and Lodge DM (2015) Infection with a trematode parasite differentially alters competitive interactions and antipredator behaviour in native and invasive crayfish. *Freshwater Biology* **60**, 1581–1595.
- Rivero A and Ferguson HM (2003) The energetic budget of *Anopheles stephensi* infected with *Plasmodium chabaudi*: is energy depletion a mechanism for virulence? *Proceedings of the Royal Society B: Biological Sciences* **270**, 1365–1371.
- Roitberg BD, Boivin G and Vet LEM (2001) Fitness, parasitoids, and biological control: an opinion. *The Canadian Entomologist* **133**, 429–438.
- Ruiz-Daniels R, Beltran S, Poulin R and Lagrue C (2012) Do parasites adopt different strategies in different intermediate hosts? Host size, not host species, influences *Coitocaecum parvum* (Trematoda) life history strategy, size and egg production. *Parasitology* **140**, 1–9.
- SAS Institute Inc (2015) JMP 12. SAS Institute., Cary, North Carolina.
- Schall JJ (1992) Parasite-mediated competition in *Anolis* lizards. *Oecologia* **92**, 58–64.
- Seppälä O and Jokela J (2008) Host manipulation as a parasite transmission strategy when manipulation is exploited by non-host predators. *Biology Letters* **4**, 663–666.
- Seppälä O, Valtonen ET and Benesh DP (2008) Host manipulation by parasites in the world of dead-end predators: adaptation to enhance transmission? *Proceedings of the Royal Society B: Biological Sciences* **275**, 1611–1615.
- Sieber M, Malchow H and Hilker FM (2013) Disease-induced modification of prey competition in eco-epidemiological models. *Ecological Complexity* **18**, 74–82.
- Sparkes TC, Weil KA, Renwick DT and Talkington JA (2006) Development-related effects of an acanthocephalan parasite on pairing success of its intermediate host. *Animal Behaviour* **71**, 439–448.
- Sutcliffe DWDW (1992) Reproduction in *Gammarus* (crustacea, Amphipoda): basic processes. *Freshwater Forum* **2**, 102–128.
- Thieltges DW, Amundsen PA, Hechinger RF, Johnson PTJ, Lafferty KD, Mouritsen KN, Preston DL, Reise K, Zander CD and Poulin R (2013) Parasites as prey in aquatic food webs: implications for predator infection and parasite transmission. *Oikos* **122**, 1473–1482.
- Thomas F, Renaud F, Demee T and Poulin R (1998) Manipulation of host behaviour by parasites: ecosystem engineering in the intertidal zone? *Proceedings of the Royal Society B: Biological Sciences* **265**, 1091–1096.
- Thomas F, Poulin R, De Meeüs T, Guégan J and Renaud F (1999) Parasites and ecosystem engineering: what roles could they play? *Oikos* **84**, 167–171.
- Thompson SN, Redak RA and Wang L-W (2001) Altered dietary nutrient intake maintains metabolic homeostasis in parasitized larvae of the insect *Manduca sexta* L. *Journal of Experimental Biology* **204**, 4065–4080.
- Thomas F, Adamo S and Moore J (2005) Parasitic manipulation: where are we and where should we go? *Behavioural Processes* **68**, 185–199.
- Thumbi SM, Bronsvort BMDC, Poole EJ, Kiara H, Toye PG, Mbole-Kariuki MN, Conradie I, Jennings A, Handel IG, Coetzer JAW, Steyl JCA, Hanotte O and Woolhouse MEJ (2014) Parasite co-infections and their impact on survival of indigenous cattle. *PLoS One* **9**, e76324.
- Tompkins DM, Draycott RAH and Hudson PJ (2000) Field evidence for apparent competition mediated via the shared parasites of two gamebird species. *Ecology Letters* **3**, 10–14.
- Tompkins DM, Greenman JV and Hudson PJ (2001) Differential impact of a shared nematode parasite on two gamebird hosts: implications for apparent competition. *Parasitology* **122**, 187–193.
- Vannatta JT and Minchella DJ (2018) Parasites and their impact on ecosystem nutrient cycling. *Trends in Parasitology* **34**, 452–455.
- Vivas Muñoz JC, Staaks G and Knopf K (2017) The eye fluke *Tylodelphys clavata* affects prey detection and intraspecific competition of European perch (*Perca fluviatilis*). *Parasitology Research* **116**, 2561–2567.
- Weinstein S, Titcomb G, Agwanda B, Riginos C and Young H (2017) Parasite responses to large mammal loss in an African savanna. *Ecology* **98**, 1839–1848.
- Wood CL, Byers JE, Cottingham KL, Altman I, Donahue MJ and Blakeslee AMH (2007) Parasites alter community structure. *Proceedings of the National Academy of Sciences* **104**, 9335–9339.
- Yan G (1996) Parasite-mediated competition: a model of directly transmitted macroparasites. *American Naturalist* **148**, 1089–1112.
- Yan G and Stevens L (1995) Selection by parasites on components of fitness in *Tribolium* beetles – the effect of intraspecific competition. *American Naturalist* **146**, 795–813.
- Zohar S and Holmes JC (1998) Pairing success of male *Gammarus lacustris* infected by two acanthocephalans: a comparative study. *Behavioral Ecology* **9**, 206–211.