

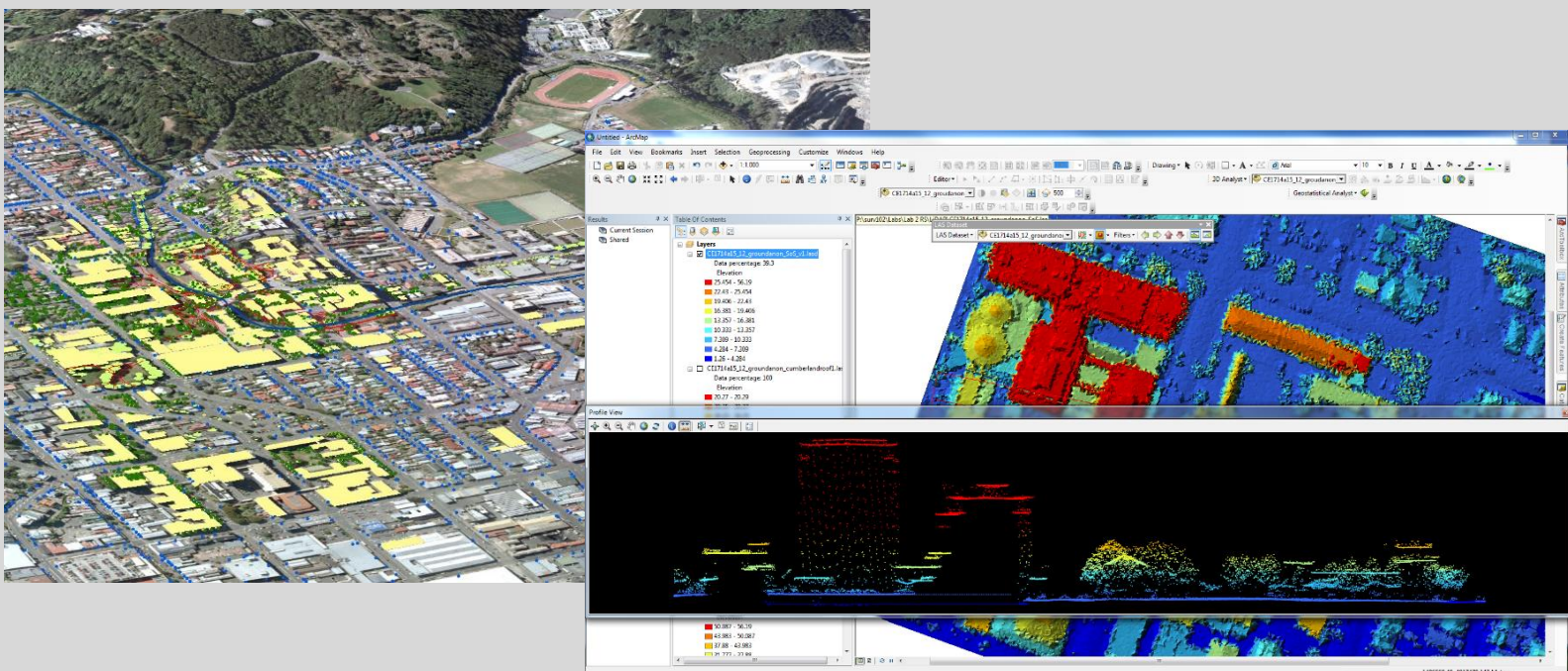


Introduction to ArcGIS Desktop

Hosted by the School of Surveying

The **four hour course** will introduce participants to Esri's ArcGIS Desktop software. ArcGIS is the industry-standard Geographic Information System (GIS) software and is used in many different fields and applications, from economics to ecology. Datasets increasingly contain location information. Knowing how to handle the spatial aspects of data improves analysis and results.

Participants in the course will learn how to use tools and features in the software to import data, perform basic spatial analysis, symbolise data, export data into various formats, and to map results. The course is designed for people who have little or no experience with ArcGIS software.



Details

When: Thursday February 21st 2019, 9am - 1pm

Where: Spatial lab (G13) on ground floor of Surveying Building, 310 Castle Street

Intended Audience: Postgraduates and staff

Cost: FREE for staff and postgraduate students

To register, or for more information, please email Aubrey Miller (aubrey.miller@otago.ac.nz) and include your university username, email address and department.

The course is limited to 30 participants.