



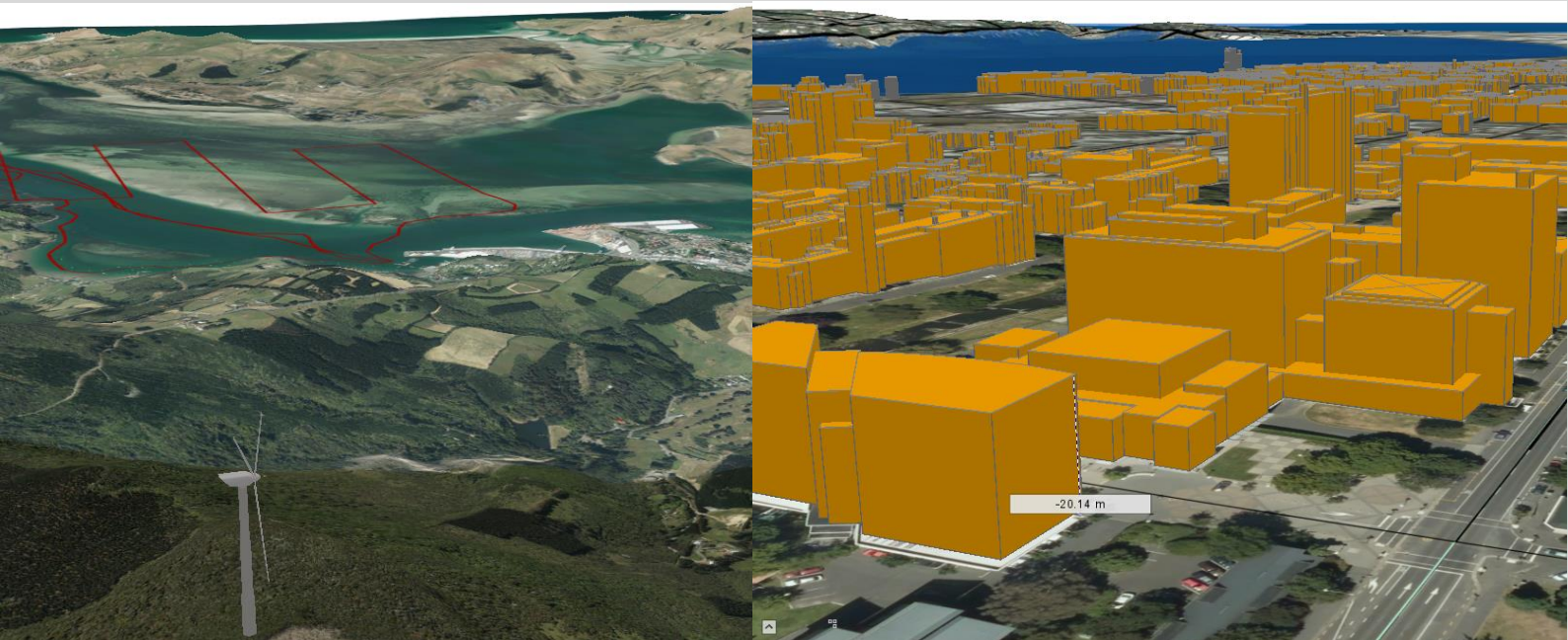
Introduction to ArcGIS Pro

Hosted by the School of Surveying

The **three hour course** will introduce participants to Esri's new stand-alone ArcGIS Pro software program. ArcGIS is the industry-standard Geographic Information System (GIS) software and is used in many different fields and applications, from economics to ecology. Datasets increasingly contain location information. Knowing how to handle the spatial aspects of data improves analysis and results.

ArcGIS Pro is a powerful software package that offers improvements in handling multi-dimensional (e.g., elevation and time) data over ArcGIS programs like ArcMap (brief overview [here](#)). Participants in the course will be introduced to the ArcGIS Pro interface and explore some of analysis tools such as a viewshed calculation and LiDAR processing, as well as 3D scene visualisation and animations.

ArcMap users interested in ArcGIS Pro are especially encouraged to attend, however no previous experience with ArcGIS is required.



Details

When: Thursday February 21st 2019, 2 - 5pm

Where: Spatial lab (G13) on ground floor of Surveying Building, 310 Castle Street

Intended Audience: Postgraduates and staff

Cost: FREE for staff and postgraduate students

To register, or for more information, please email Aubrey Miller (aubrey.miller@otago.ac.nz) and include your university username, email address and department.

The course is limited to 30 participants.