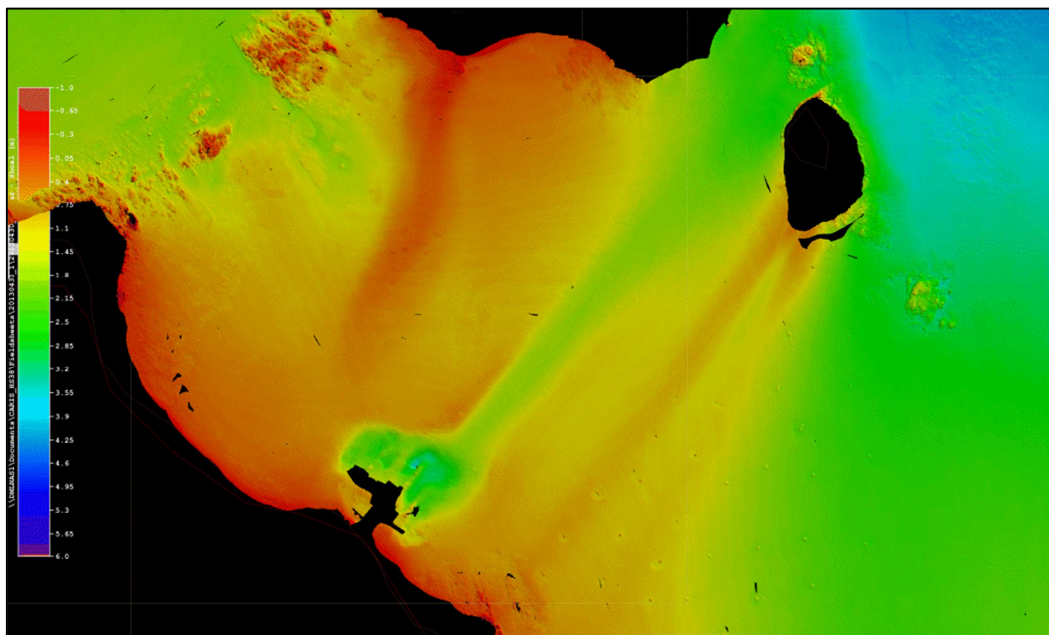


Hydrographic Surveying with Multibeam Echo Sounders in the Bay of Islands

Mr. Bruce Wallen

Discovery Marine Limited



Abstract: LINZ contracted DML to undertake a MBES (multibeam echosounder) hydrographic survey in the Bay of Islands. This presentation discusses shallow water MBES work and the challenges that arose in meeting the contract specifications.

12:00 noon, Thursday, 26 September 2013

Room 113 (L1)

School of Surveying

310 Castle Street

School of
Surveying
Te Kura Kairūri

UNIVERSITY
of
OTAGO

Te Whare Wānanga o Ōtago
NEW ZEALAND