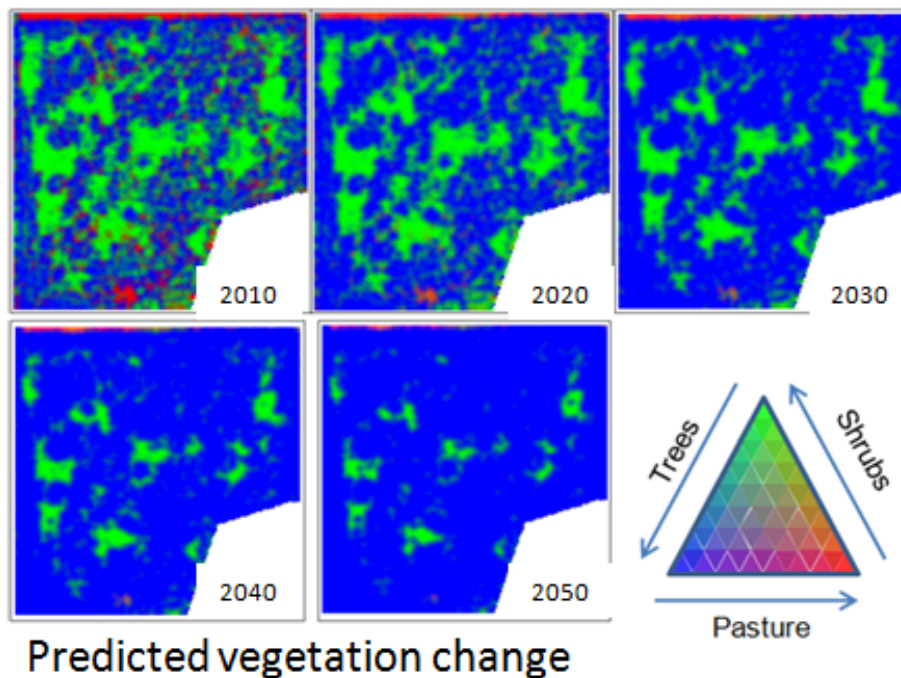


Modelling vegetation change, human health and wellbeing and zombies! (not all at once)

Dr. Rachel Whitsed

School of Environmental Sciences

Charles Stuart University, NSW, Australia



Abstract: Modelling vegetation change: application of a cellular automata model for woody vegetation change in abandoned paddocks. I'm particularly interested in how the model can be improved using fuzzy methods and genetic programming for rule selection, multivariate sensitivity analysis for determining model parameters, and patch complexity to determine goodness of fit.

I will also briefly outline some other research themes that I am hoping to work on during my sabbatical, namely human health and wellbeing (how do environmental health and human health interact and impact on each other spatially?) and uncertainty in spatial decision making (using a zombie attack scenario, how do decision makers interpret and deal with uncertainty in spatial analysis?)

Dr. Whitsed is on sabbatical at the University of Otago until the end of September.

12:00 noon, Thursday, 23rd July 2015

**L1 Lecture Theatre
School of Surveying
310 Castle Street**