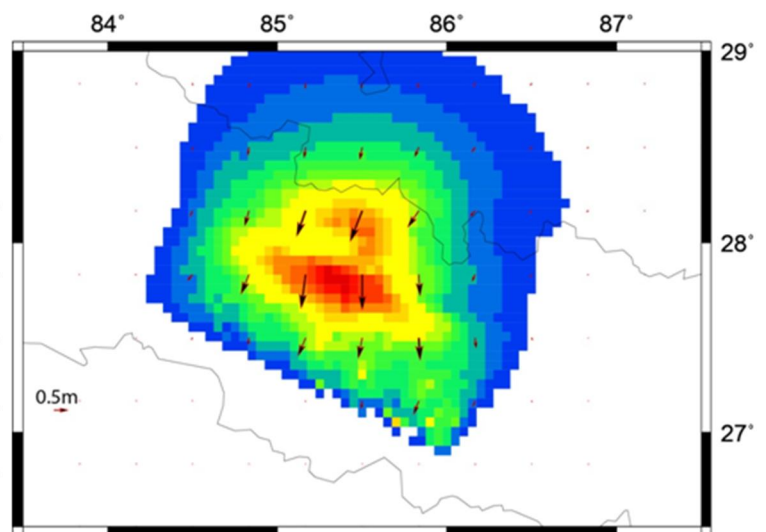
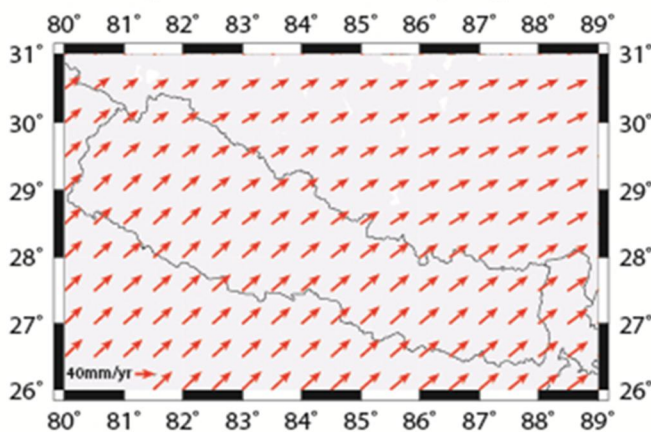


Towards a modernized geodetic datum for Nepal: Options for developing an accurate terrestrial reference frame following the April 25, 2015 Mw7.8 Gorkha earthquake

Dr. Chris Pearson
School of Surveying



Nepal Velocity grid



Abstract: Along with the damage to buildings and infrastructure, the April 25, 2015 Mw7.8 Gorkha earthquake caused significant deformation over a large area of eastern Nepal with displacements of over 2 m recorded in the vicinity of Kathmandu. In this talk I consider options for a modernized geodetic datum for Nepal that will have the capacity to correct for the earthquake displacements and ongoing tectonic deformation associated with Nepal's location on the India/Eurasian plate boundary.

12:00 noon, Thursday, 12 May 2016

L1 Lecture Theatre
School of Surveying
310 Castle Street

School of
Surveying
Te Kura Kairūri

UNIVERSITY
OTAGO

Te Whare Wānanga o Ōtago
NEW ZEALAND