

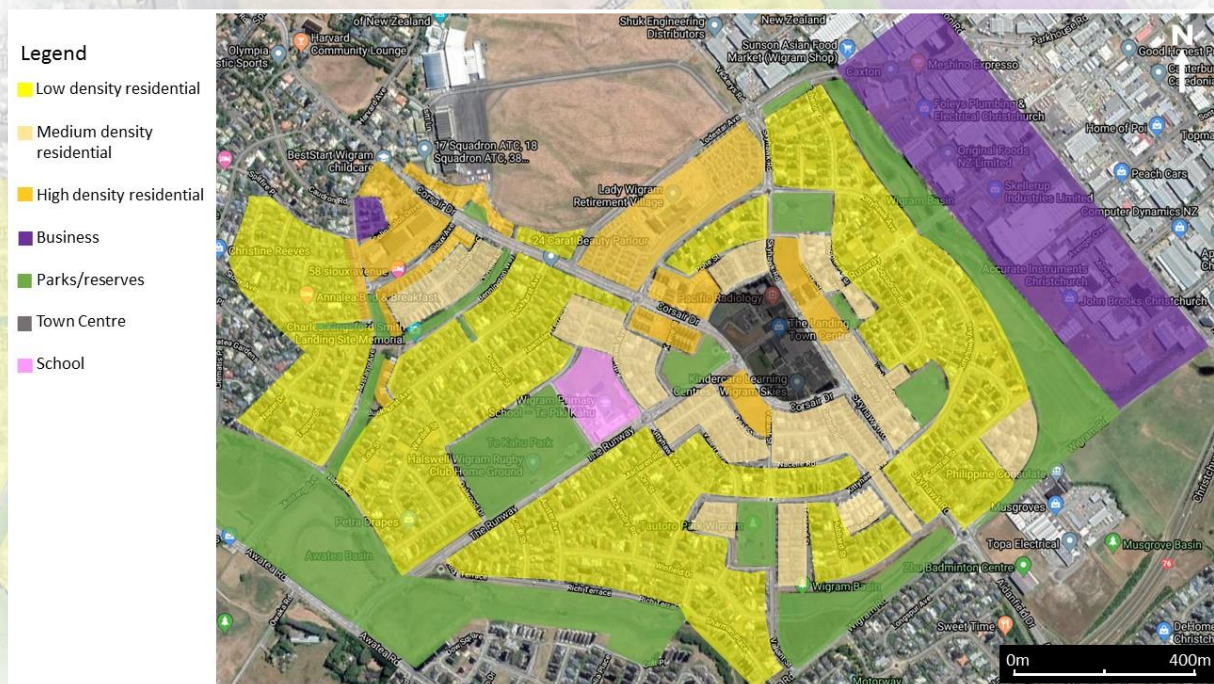
School of Surveying Te Kura Kairūri

Lunchtime Seminar Series

Indigenous-led Property Development: Innovations and Implications

Professor Michelle Thompson-Fawcett

School of Geography & Associate Dean Māori Division of Humanities



This talk examines Indigenous property development, drawing on research into post treaty settlement activities by Ngāi Tahu in New Zealand and Treaty One First Nations in Manitoba. It highlights the complexities of Indigenous peoples as self-determining, with authority to develop their own urban planning approaches, and Indigenous peoples as conventional property developers, subject to the same rules as any other private interest. This apparent contradiction is used to expose a need for alternative, decolonial ways of understanding relationships between local authorities and Indigenous authorities, grounded in the recognition of overlapping governance roles and responsibilities which Indigenous peoples are now (re)claiming in the urban environment.

Thursday 14th October 2021 (12pm – 1pm)

L1 Lecture Theatre | School of Surveying, 310 Castle Street

OR Join remotely: <https://zoom.us/join> (ID: 329 427 2033, P/W: 310310)